

STREET PAVING IMPROVEMENTS

to serve

RIVENDALE ADDITION - PHASE 3

Victoria, from 55th St. S north to Lot 26, Block C
 Victoria Ct., from Victoria east and then south to and including the cul-de-sac
 Maywood, from the west line of Lot 14, Block D east to Victoria
 Pattie, from Maywood north to the north line of Lot 25, Block B

CITY OF WICHITA, KANSAS

James L. Armour, P.E. City Engineer

Project Number

472-83868

Benchmark

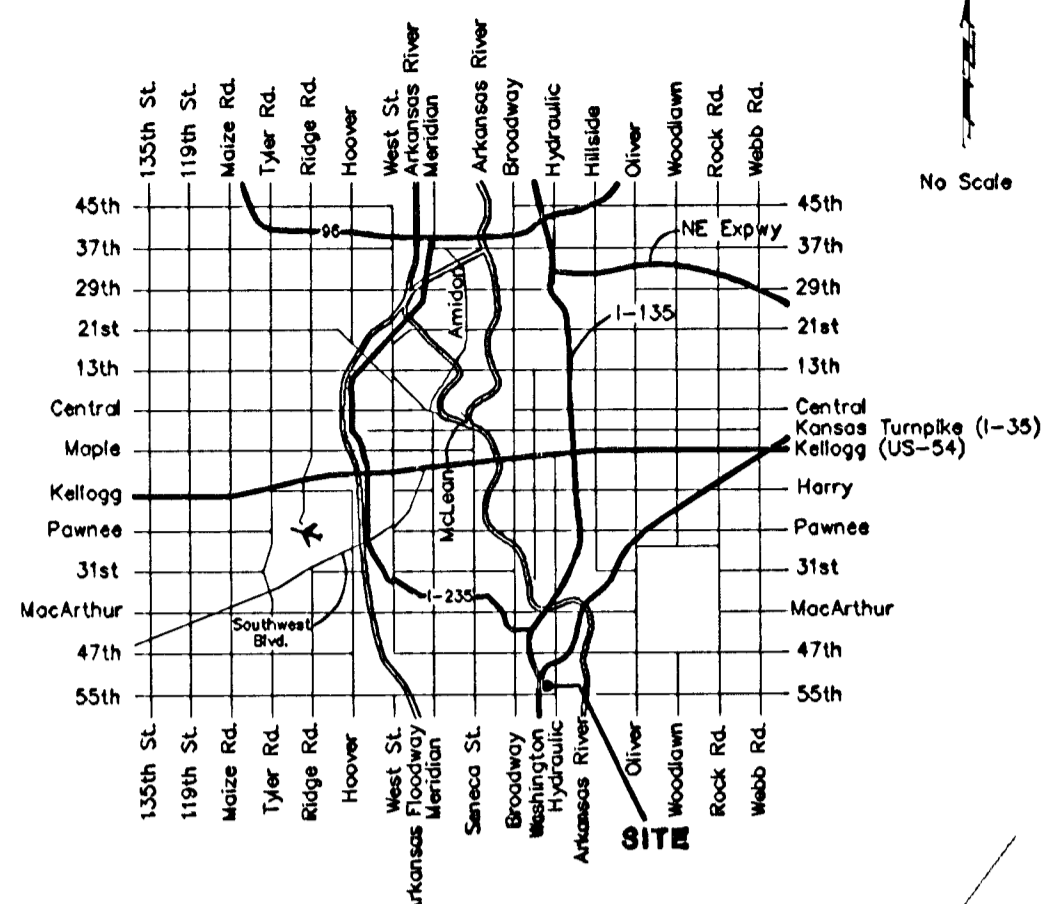
O.C.A. Number

766126

City of Wichita Benchmark Disc,
 Hydraulic and 55th Street South,
 42.00' North of Centerline, 40.70'
 West of Centerline, 3.70' North of
 centerline of Power Pole, 58.20'
 Northwest of Southeast Corner, Sec.
 21, Twp. 28-S, R-1-E.
 Elev. = 76.19 City Datum
 Elev. = 1263.59 (NGVD29)

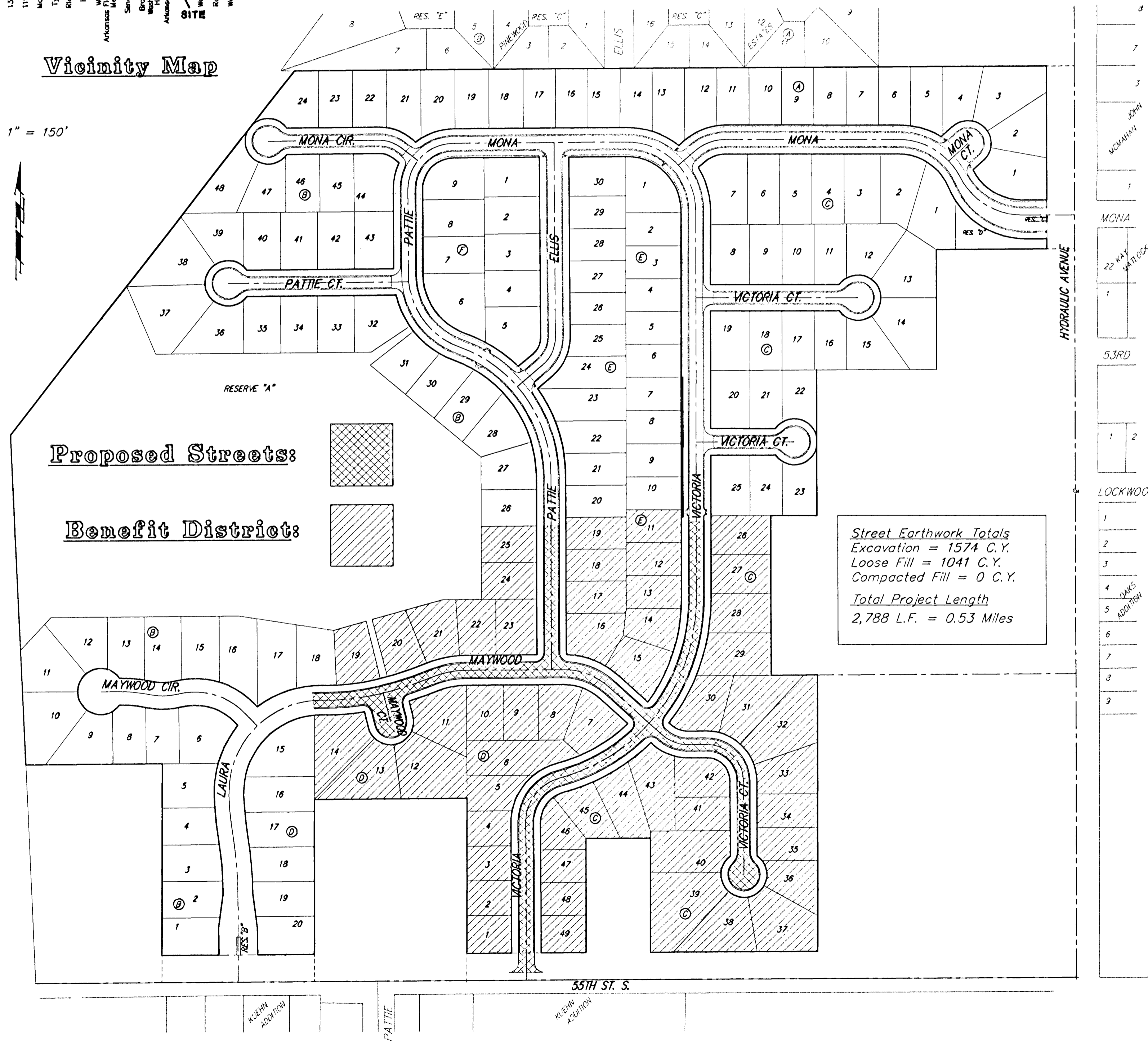
Sheet Index

Title Sheet	1	SWS Line 4	21
35' Pavement Detail	2	Std. Manhole Dtl.	22
29' Pavement Detail	3	Std. Shallow Manhole Dtl.	23
Sign Detail	4	Frame & Cover Dtl.	24
Miscellaneous Detail	5	Single Curb Inlet Dtl.	25
Victoria	6-8	Double Curb Inlet Dtl.	26
Victoria Ct.	9	Drop Inlet Dtl.	27
Maywood & Maywood Ct.	10-11	Special Yard Inlet	28
Pattie	12	Mass Grading Plan	29
SWS Line 1	13-15	Erosion Control Plan	30
SWS Line 1A	13	Erosion Control BMP's	31-34
SWS Line 1B	15	Earthwork Cross Sections	35-37
SWS Line 2	16	Coordinate Sheet	38
SWS Line 3	17-19	Copy of Plat	39
SWS Line 3A	20		



Vicinity Map

Scale: 1" = 150'



Street Earthwork Totals
 Excavation = 1574 C.Y.
 Loose Fill = 1041 C.Y.
 Compacted Fill = 0 C.Y.
 Total Project Length
 2,788 L.F. = 0.53 Miles

GENERAL NOTES:

- Contractor will be required to provide notice to utility companies a minimum of twenty-four (24) hours prior to any excavation, as follows:
 Kansas One-Call 687-2470
 The Contractor must notify the following in case of an emergency:
 Cox Communications 262-4270
 Kansas Gas Service 1-888-482-4950
 Westar Energy 383-8650
 Aquila Energy 1-800-303-0357
 AT&T 268-2245
 City of Wichita Water Dept. 268-4563
 City of Wichita Sewer Maint. 268-4024
 City of Wichita Storm Sewer Maint. 268-4090
 City of Wichita Traffic Maint. 268-4034
 Conoco Pipeline Co. 1-800-231-2551
 Southern Star Pipeline Co. 529-6500
 Phillips Pipeline Co. 1-800-766-8230
 Jayhawk Pipeline Co. 1-888-542-9575
- Utility service lines, poles, valve boxes, meters, and etcetera are to be adjusted as necessary by others prior to construction unless the plans specifically call for their adjustment by the Contractor or unless the plans specifically identify a utility to be adjusted by its owner during construction. Existing utilities and their location, as shown on the plans, represent the best information obtainable for design. The contractor will be required to work around existing utilities within the right-of-way which do not conflict with proposed construction.
- Trees and shrubs in public right-of-way which are in direct conflict with proposed new construction shall be removed by the Contractor with the Engineer's approval. Trees and shrubs which are not in direct conflict with proposed new construction shall be saved and protected from damage.
- The Contractor shall give all property owners and/or tenants of developed property abutting the construction of this project a minimum of ten (10) days advance notice prior to start of construction.
- The Contractor shall be responsible for preserving property irons. The Contractor will be required to re-establish any property irons which are damaged or destroyed by his construction operations. Such irons shall be re-established by a licensed land surveyor in accordance with state laws.
- All excavation & trenching material shall be stockpiled or spread out on site as determined by the Engineer.
- All areas disturbed during construction shall be seeded at 300 lbs./acre with Rye Grass immediately following construction in that area. Contractor shall prepare ground per City Specifications.
- Rubble from the removal of miscellaneous structures and excess excavation which is to be wasted shall be disposed of on sites to be provided by the Contractor. These sites shall be approved by the Engineer as to suitability, appearance and site location. Locations that, in the opinion of the Engineer, will leave an unsightly appearance will not be approved. All disposal sites must be approved by the Kansas Department of Health and Environment. Material either stockpiled or disposed of in a flood plain would require a Kansas State Board of Agriculture permit. Any material dumped in waters of the United States or wetlands is subject to U.S. Corps. of Engineers permitting regulations. Any material buried or stockpiled beyond approved construction limits would require additional archaeological investigations unless buried in a previously approved borrow location.
- The Contractor shall be responsible for preserving property irons. The Contractor will be required to re-establish any property irons which are damaged or destroyed by his construction operations. Such irons shall be re-established by a licensed land surveyor in accordance with state law.
- A saw cut of at least one-half the depth of existing surface courses or one-fourth the depth of the existing total pavement thickness shall be provided at locations where proposed construction abuts an existing surface course or pavement for which partial removal of that surface or pavement is required. Sawed joint to facilitate removal within three (3) feet of existing joints will not be permitted and for such instances the limits of removal shall extend to the existing joint. Such saw cuts will not be paid for directly and this cost shall be considered as subsidiary to the removal of the surface or pavement.
- All existing and proposed erosion control measures including silt fencing, erosion control mat, straw bales, inlet barriers, and const. entrance shall be maintained throughout construction by the contractor and until project is accepted by the City of Wichita. The on-site engineer shall complete weekly reports on the status of erosion control measures. The contractor shall be required to comply with maintenance and/or replacement of erosion control measures as determined by the on-site engineer until project is accepted by City of Wichita. Maintenance and/or replacement of erosion control measures to be paid by individual Bid Items.
- The developer for this project is Tim J. Malone, and may be reached at (316) 263-4623.
- Earthwork Cross Sections and Mass Grading reflect the best topographic information available at the time of plan preparation. The Contractor shall satisfy himself with the Earthwork Quantities as bid for Excavation and Compacted Fill prior to bidding. No additional payments or change orders for earthwork or earthwork related items will be accepted.

