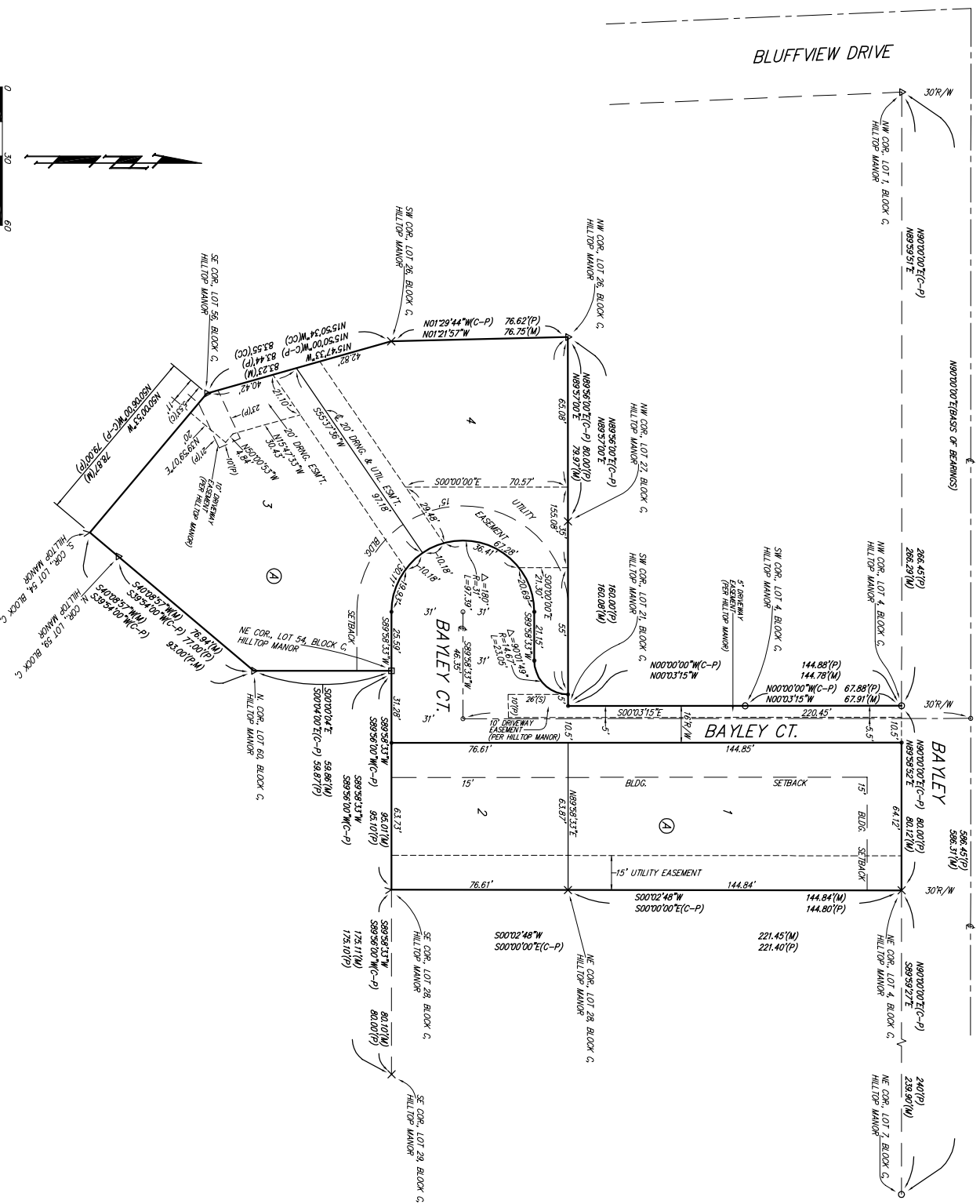


HILLTOP MANOR 3RD ADDITION WICHITA, SEDGWICK COUNTY, KANSAS



(M) = MEASURED
 (P) = PLATTED
 (R) = REBAR FOUND
 (S) = SCOLD MEASUREMENT
 (T) = TYPICAL MEASUREMENT
 (U) = UTILITY
 (V) = VERTICAL CURVE
 (W) = WIDE
 (X) = CROSS FOUND
 (Y) = Y NOTCH (SET)
 (Z) = ZEPHYRUS
 (CC) = CALCULATED CLOSURE
 BASED ON PLATTED INFO.

NOTE:
 A master grading plan for drainage has been developed for this addition and is on file with the City of Wichita, Kansas. All construction shall be in accordance with the master grading plan established on file with the City of Wichita, Kansas. No obstructions which impede the flow of this drainage system shall be allowed.

State of Kansas) SS We, Baughman Company, P.A., Surveyors
 Sedgwick County) in atforessaid county and state do hereby certify that we have surveyed
 and plotted "HILLTOP MANOR 3RD ADDITION", Wichita, Sedgwick County,
 Kansas and that the accompanying plat is a true and correct exhibit
 of the property surveyed, described as and being a replat of Lots 4,
 21, 26, 27, 28, and 54, Block C, Hilltop Manor, A Re-plot of parts of
 Hilltop Manor and Hilltop Manor 2nd Addition, being a subdivision in
 Section 26, Township 27 South, Range 1, East of the 6th Principal
 Meridian, in Sedgwick County, Kansas.

Existing public easements and dedications
 being located by virtue of K.S.A. 12-512(b).
 All being situated in the SE 1/4 of Sec. 26, Twp. 27-S,
 R-1-E of the 6th P.M., Sedgwick County, Kansas.
 Baughman Company, P.A.

Michael G. Conroy, Surveyor

Know all men by these presents that we,
 the undersigned, have caused the land in the surveyors certificate to be
 platted into Lots, a Block, and a Street, to be known as "HILLTOP MANOR
 3RD ADDITION", Wichita, Sedgwick County, Kansas. The utility easements
 are hereby granted as indicated for the construction and maintenance of
 all public utilities. The drainage easement is hereby granted as indicated
 for drainage purposes. The drainage and utility easement is hereby
 granted as indicated for drainage purposes and for the construction and
 maintenance of all public utilities. The streets are hereby dedicated to
 and for the use of the public.
 Mennonite Housing Rehabilitation Services, Inc.

Andrew L. Bias, President

State of Kansas) SS The foregoing instrument acknowledged before
 Sedgwick County) me this ___ day of _____, 2003, by Andrew L. Bias, President of
 Mennonite Housing Rehabilitation Services, Inc., on behalf of the corporation.

My App't, Exp. _____, Notary Public

This plat of "HILLTOP MANOR 3RD ADDITION",
 Wichita, Sedgwick County, Kansas has been submitted to and approved by
 the Wichita-Sedgwick County Metropolitan Area Planning Commission,
 Wichita, Kansas
 Dated this ___ day of _____, 2003.
 Wichita-Sedgwick County Metropolitan Area Planning Commission

Bernard A. Hentzen, Chair

Date Miller, Secretary

This plat approved and all dedications
 shown hereon accepted by the City Council of the City of Wichita,
 Kansas, this ___ day of _____, 2003.

At the direction of the City Council

Chris Cherches, City Manager

Pat Groves, City Clerk

Reviewed in accordance with K.S.A. 58-2005
 on this ___ day of _____, 2003.

Tricia L. Robella, L.S. #1246
 Deputy County Surveyor
 Sedgwick County, Kansas

Entered on transfer record this ___ day
 of _____, 2003.

Don Brace, County Clerk

State of Kansas) SS This is to certify that this plat has been
 Sedgwick County) filed for record in the office of the Register of Deeds, this ___ day
 of _____, 2003 at _____ o'clock _____ M. and is duly recorded.

Bill Meek, Register of Deeds

Linda Kizyre, Deputy