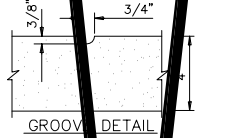
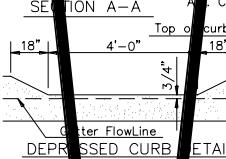
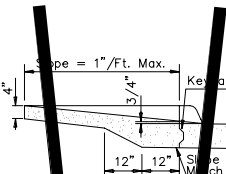
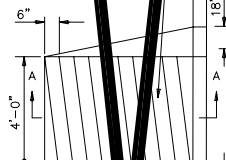


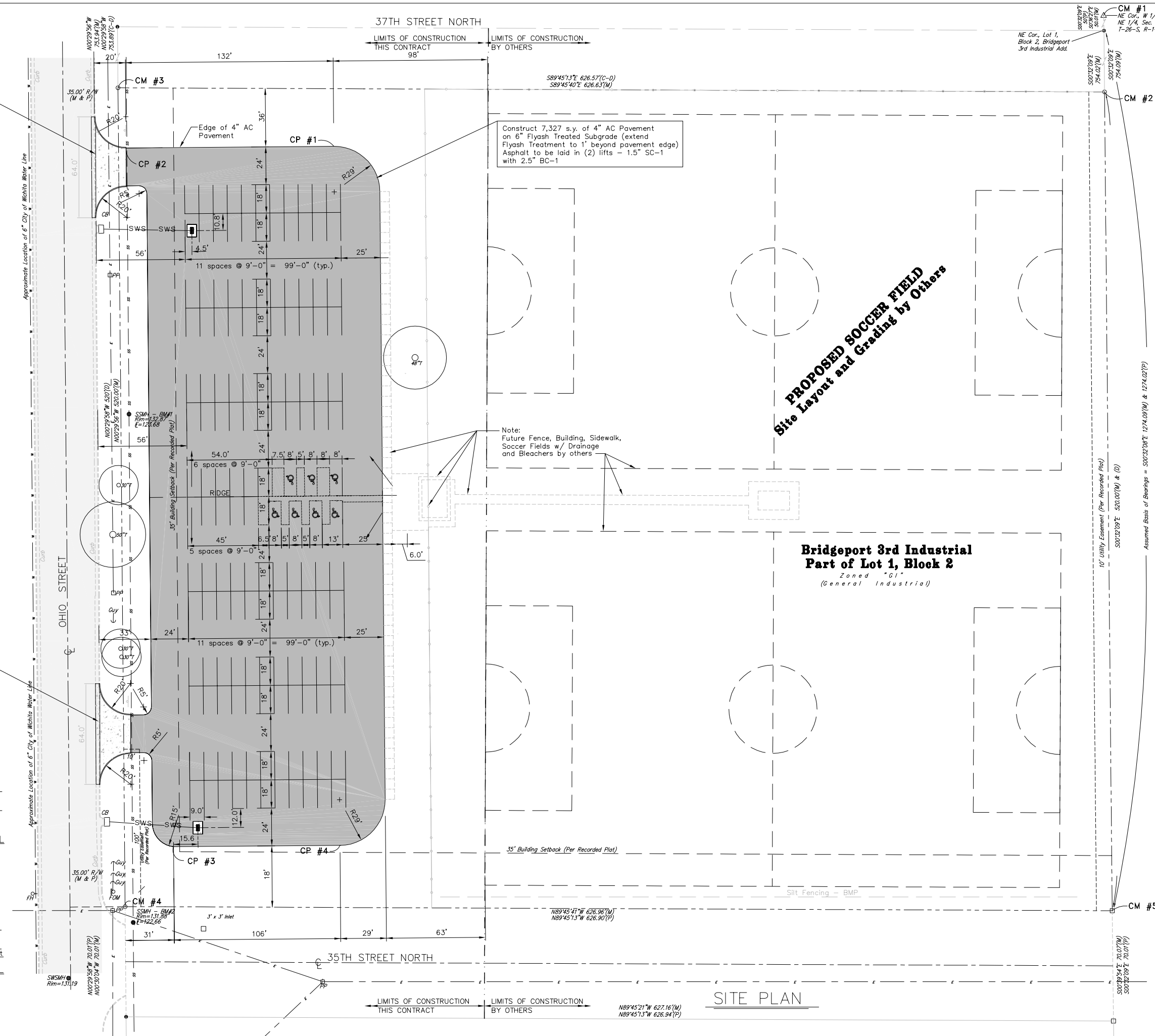
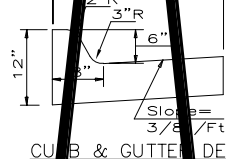
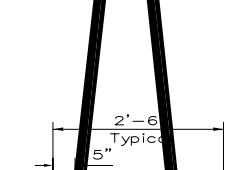
Remove 64 l.f. of Existing Curb & Gutter - Construct 819 s.f. Entrance Drive per section A-3 on sheet 6



Note: Curb ramp shall have the detectable warning which extends the full width and depth of the curb ramp.



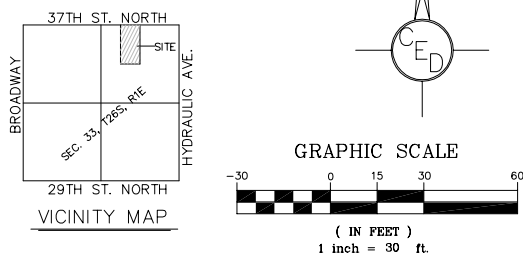
Remove 64 l.f. of Existing Curb & Gutter - Construct 819 s.f. Entrance Drive per section A-3 on sheet 6



UTILITIES SHOWN REPRESENT THE BEST INFORMATION AVAILABLE FOR DESIGN. ADDITIONAL UTILITIES MAY BE PRESENT ON THIS PROJECT. THE CONTRACTOR SHALL BE RESPONSIBLE FOR DETERMINING THE EXACT LOCATION, DEPTH AND SIZE OF ALL UNDERGROUND UTILITIES PRIOR TO CONSTRUCTION. THE CONTRACTOR SHALL BE LIABLE FOR ANY DAMAGE CAUSED BY THE FAILURE TO DO SO.

**SURVEY DISCLAIMER:**  
TOPOGRAPHIC SURVEY AND CONTOUR MAP USED IN PREPARING PLANS WAS PROVIDED BY BAUGHMAN COMPANY P.A., 315 ELLIS, WICHITA, KS (316)262-7271. ENGINEER DOES NOT GUARANTEE SURVEY ELEVATIONS FOR ACCURACY. CONTRACTOR SHALL VERIFY ELEVATIONS AND NOTIFY ENGINEER OF ANY DISCREPANCIES.

**ON SITE BENCHMARK #1: BM#1**  
Top of Rim - Sanitary Sewer Manhole along Ohio Street. N 3991.30 4387.90  
Elev.=132.87 (Per Survey)  
**ON SITE BENCHMARK #2: BM#2**  
Top of Rim - Sanitary Sewer Manhole along Ohio Street. N 3668.53 E 4390.53  
Elev.=131.88 (Per Survey)



SURVEY CONTROL MONUMENTS	
CM #1	N 4950.00 E 5000.46 1/2" Iron Pipe in Thimble (found) at NE Cor. NE 1/4, NE 1/4, Sec. 33, T-26-S, R-1-E
CM #2	N 4195.94 E 5007.51 #4" Rebar W/ "Baughman" Cap (set) NE Cor. Lot 1, Block 2 Bridgeport 3rd Industrial
CM #3	N 4198.55 E 4380.89 #4" Rebar W/ "Baughman" Cap (set) NW Cor. Lot 1, Block 2 Bridgeport 3rd Industrial
CM #4	N 3678.57 E 4385.42 #4" Rebar W/ "Baughman" Cap (set) SW Cor. Lot 1, Block 2 Bridgeport 3rd Industrial
CM #5	N 3675.96 E 5012.38 1 1/4" Iron Pipe (found) SE Cor. Lot 1, Block 2 Bridgeport 3rd Industrial

CONSTRUCTION CONTROL POINTS	
CP #1	N 4161.40 E 4518.00 NE Corner of Proposed Parking Lot
CP #2	N 4160.25 E 4386.04 NW Corner of Proposed Parking Lot
CP #3	N 3716.60 E 4416.10 SW Corner of Proposed Parking Lot
CP #4	N 3717.42 E 4521.86 SE Corner of Proposed Parking Lot

**LEGEND**

- = #4 REBAR W/ "BAUGHMAN" CAP (FOUND)
- = #4 REBAR W/ "BAUGHMAN" CAP (SET)
- = 1 1/4" IRON PIPE (FOUND)
- △ = 1/2" IRON PIPE IN THIMBLE (FOUND)
- (M) = MEASURED
- (P) = PLATTED
- CB = Catch Basin
- FH = Fire Hydrant
- ← Guy = Guy Anchor
- △ FOM = Fiber Optic Marker
- PP = Power Pole
- SSMH = Sanitary Sewer Manhole
- SWSMH = Stormwater Sewer Manhole
- = 18"x24" Area Inlet for Soccer Field (by others)
- = Existing Spot Elevation
- = Proposed Spot Elevation for Soccer Field (by others)
- = Existing Tree
- = Gas Line
- = Electric Line
- = Sanitary Sewer Line
- = Stormwater Sewer Line
- = Telephone Line
- = Water Line
- - - - -133- - - - - Existing Contour
- - - - -133- - - - - Proposed Contour for Soccer Field (by others)
- - - - -133- - - - - Proposed Contour (Parking Lot)
- - - - -12" or 36" Pipe - - - - - Proposed 4" Perforated Drain Tube for Soccer Field (by others)

Revised by City of Wichita 8/14/03

**SITE PLAN FOR**  
**37TH & OHIO PARKING LOT**  
WICHITA, SEDGWICK CO., KANSAS  
PROJ. NO.: 20031014

**CERTIFIED ENGINEERING DESIGN, P.A.**  
810 WEST DOUGLAS, SUITE C  
WICHITA, KANSAS 67203  
PH.(316)262-8808 FAX.(316)262-1669

DESIGNED: HDF SCALE: 1"=30' SHEET 3  
DRAWN: DPJ DATE: 4/03  
CHECKED: HDF CED FILE: 37TH&OHIO\_BASE TOTAL 11