

LIGHT FIXTURE SCHEDULE

FIXT LTR	MANUFACTURER	CATALOGUE NO.	LAMPS		FIXT. VOLT.	FINISH	MOUNTING	REMARKS
			NO.	TYPE				
A	McGRAW-EDISON	GSB15229ARBZ	1	150W HPS	277	BRONZE	POLE, TOP	②
B	McGRAW-EDISON	GMC40225ASBZ	1	400W HPS	480	BRONZE	POLE, TOP	③

LIGHT FIXTURE SCHEDULE NOTES

- MANUFACTURERS LISTED IN THIS SCHEDULE OR BY WRITTEN ADDENDUM WILL BE THE ONLY APPROVED MANUFACTURERS TO BID THE LIGHTING FIXTURES FOR THIS PROJECT. CONTRACTORS AND SUPPLIERS USING PRICING FROM MANUFACTURERS NOT LISTED ON SCHEDULE OR BY ADDENDUM DO SO AT THEIR OWN RISK. FIXTURES SPECIFIED TO MATCH FIXTURES AT OTHER WICHITA PARKS.
- MOUNT FIXTURES ON 30" ROUND TAPERED STEEL POLE, McGRAW-EDISON #RTS SERIES, 14-FOOT HEIGHT, BRONZE FINISH, 3" O.D. TENON.
- MOUNT FIXTURES ON 30" ROUND TAPERED STEEL POLE, McGRAW-EDISON #RTS SERIES, 30-FOOT HEIGHT, BRONZE FINISH, 3" O.D. TENON.

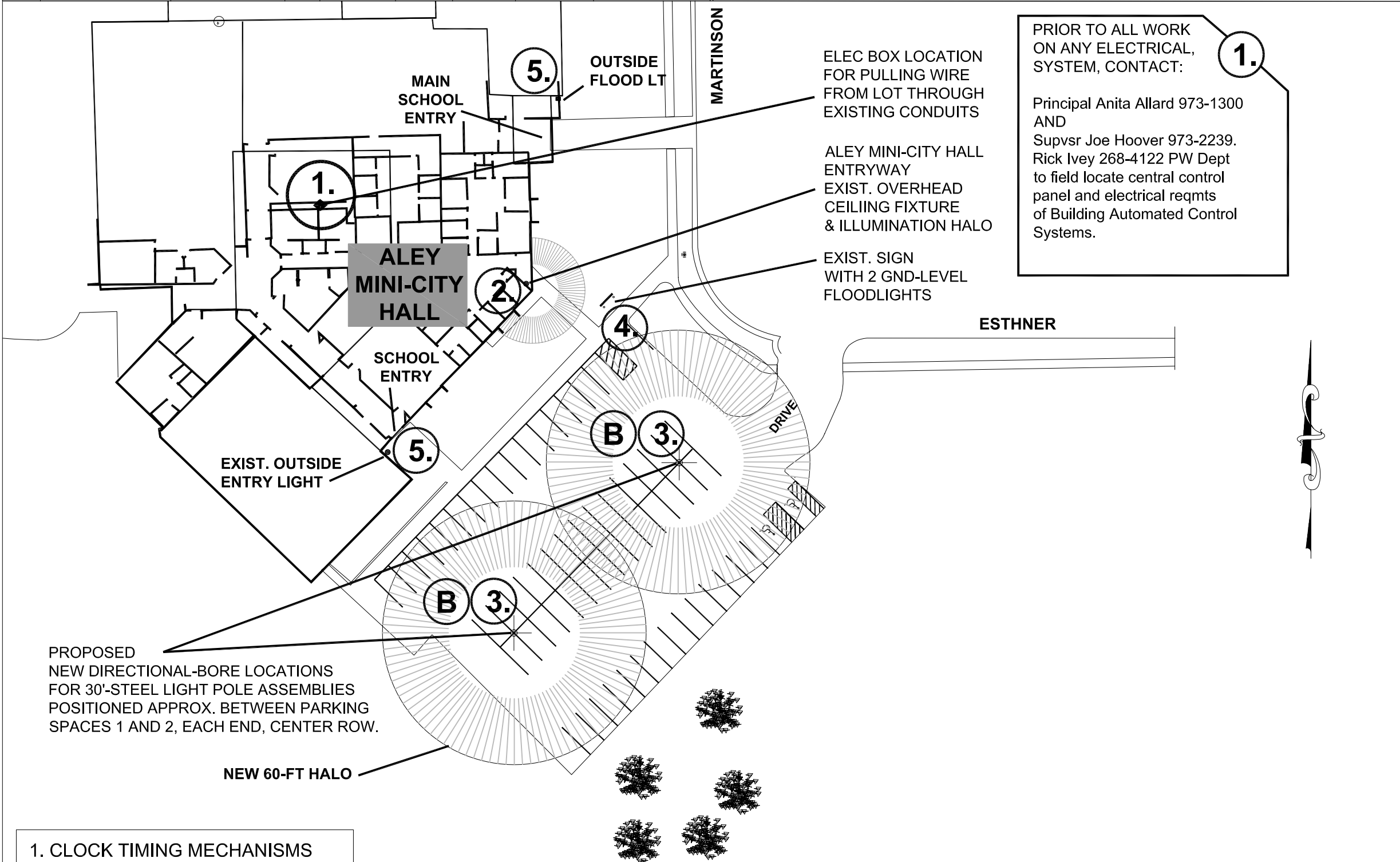
PLAN NOTES

SYMBOL	DESCRIPTION
①	EXISTING LIGHT FIXTURE POLE TO BE REMOVED. EXISTING CONCRETE BASE TO BE REMOVED TO A DEPTH OF 18 INCHES OR GREATER. BACKFILL WITH TOPSOIL. OVERSEED WITH FESCUE.
②	INSTALL NEW 24-INCH DIA. BASE, TO EXTEND UP 30 INCHES FROM SURFACE. FOR NEW STEEL LIGHT FIXTURE BASE. CONCRETE TO BE 3,000 LB., STANDARD CITY MIX, SMOOTH TROWELED.

ELECTRICAL SPECIFICATIONS

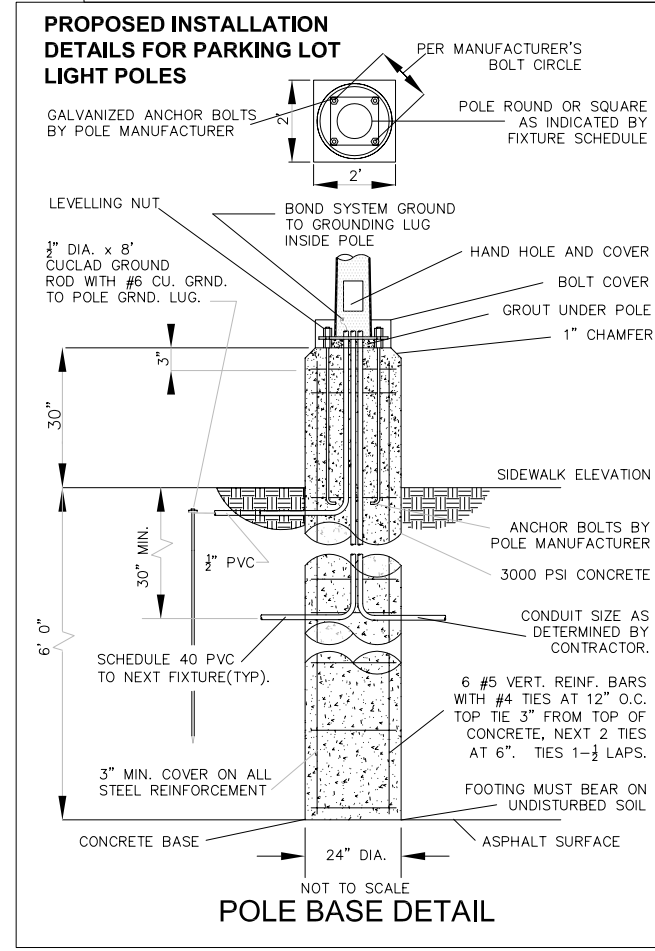
- CONTRACTOR SHALL VERIFY POWER SOURCE AT EACH SITE AND MATCH POWER SOURCE, I.E., 240V, 120V, TO MEET REQUIREMENTS OF NEW LIGHT FIXTURES. NOTIFY PARK DEPARTMENT IMMEDIATELY OF ANY DISCREPANCIES PRIOR TO ORDERING LIGHT FIXTURES & INSTALLATION.
- ALL WORK SHALL BE IN CONFORMANCE WITH THE LATEST EDITION OF THE NATIONAL ELECTRICAL CODE, NPPA, 70, AND ALL LOCAL AND STATE CODES AND ORDINANCES.
- CONTRACTOR TO DETERMINE APPROPRIATE WIRE SIZE, CIRCUIT BREAKERS, CONDUIT, ETC., FOR LIGHTING CIRCUITS.
- CONTRACTOR SHALL DIRECTIONAL-BORE ANY CONDUIT TO BE INSTALLED UNDER EXISTING PAVEMENT.
- CONTRACTOR TO VERIFY WITH BUILDING SERVICES THE PANEL LOCATIONS AND PANEL ACCESSSES.

1.
PRIOR TO ALL WORK ON ANY ELECTRICAL SYSTEM, CONTACT:
 Principal Anita Allard 973-1300
 AND
 Supvsr Joe Hoover 973-2239.
 Rick Ivey 268-4122 PW Dept
 to field locate central control panel and electrical reqmts of Building Automated Control Systems.

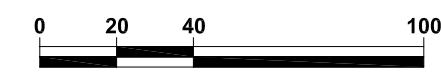


PROPOSED NEW DIRECTIONAL-BORE LOCATIONS FOR 30'-STEEL LIGHT POLE ASSEMBLIES POSITIONED APPROX. BETWEEN PARKING SPACES 1 AND 2, EACH END, CENTER ROW.

NEW 60-FT HALO



- CLOCK TIMING MECHANISMS
- MINI-CITY HALL ENTRY: TIMER
- PARKING LOT LIGHTS: TIMER
- SIGN FLOOD LIGHTS: TIMER
- AREA FLOOD LIGHT: TIMER (ALL LIGHTS OFF AT 11:00 PM)



REV. DATE	COMMENTS	INT
3-3-2003	INSERT NEW POWER SOURCE ROOM AS NOTE # 1	LRB

CITY OF WICHITA
ENGINEERING

ALEY MINI-CITY HALL LIGHTING INSTALLATION

CITY ENGINEER
JAMES L. ARMOUR, P.E.

PROJECT NUMBER 472-83988	OCA NUMBER 602529	DATE 2/2004
-----------------------------	----------------------	----------------

CITY ENGINEER'S OFFICE
 CITY HALL - SEVENTH FLOOR
 455 NORTH MAIN STREET
 WICHITA, KANSAS 67202-1820
 (316) 268-4501
 (316) 268-4114 FAX

DESIGN LRB	DRAWN LRB
---------------	--------------

SHEET
3 OF 3