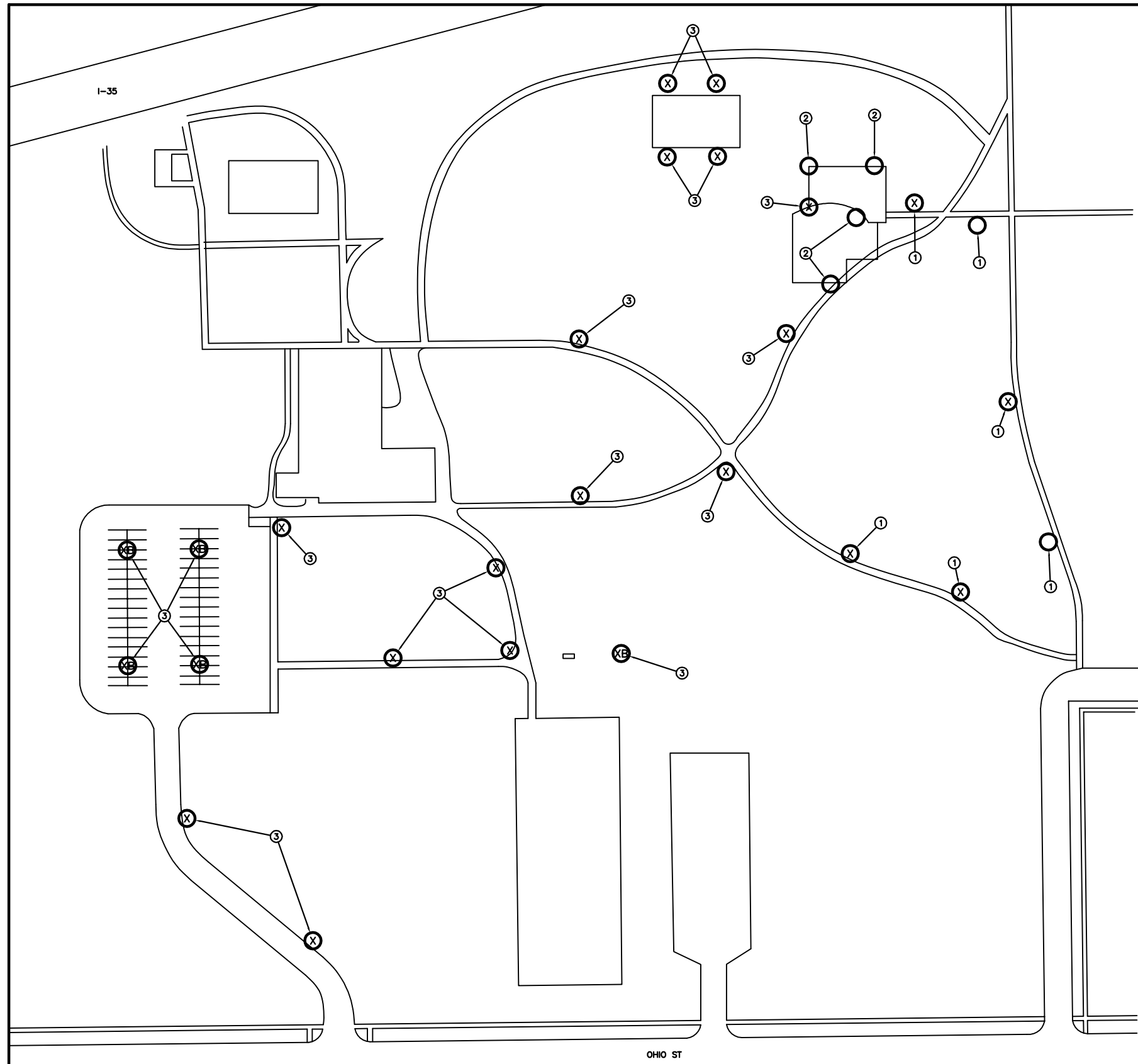
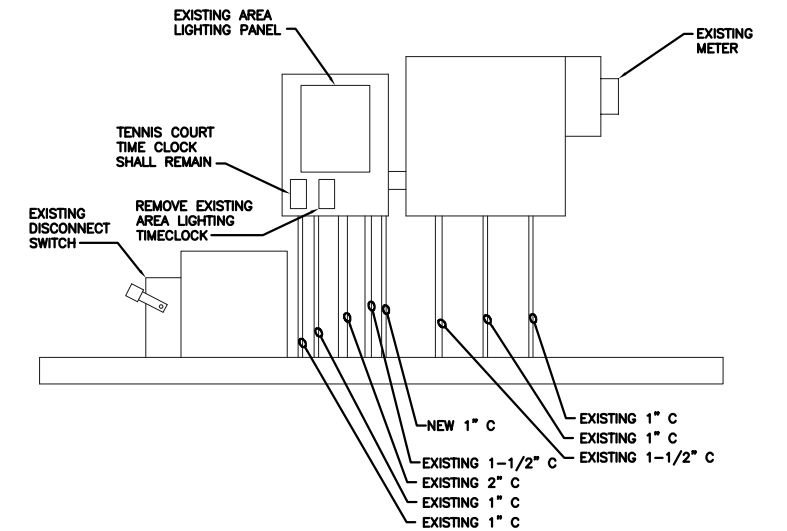


K:\ELEC\2005\COW Parks\MCADAMS\ELEC\05619M1-1.dwg, 4/11/2006 2:59:05 PM, 1:2.16998

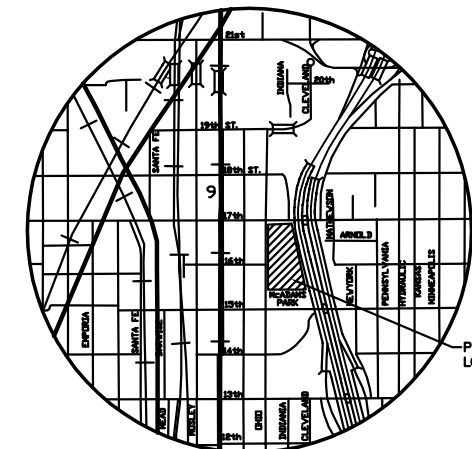


- KEYED NOTES:**
- ① EXISTING LIGHTING POLE SHALL BE REMOVED. DEMOLISH POLE BASE.
 - ② DEMOLISH ABANDONED POLE BASE.
 - ③ EXISTING LIGHT POLE TO REMAIN.

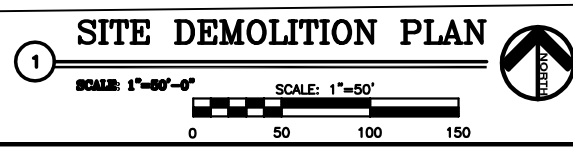


① CONTROL CABINET DEMOLITION ELEVATION

SCALE: NTS



**LOCATION MAP
McADAMS PARK**



<p>MKEC ENGINEERING CONSULTANTS 411 N. WEBB ROAD WICHITA, KS. 67206 316 - 684 - 9600</p>	<p>CITY OF WICHITA PARK McADAMS LIGHTING</p>		
	<p>PROJECT NAME McADAMS PARK AREA LIGHTING DEMO</p>		
	<p>DESIGN BY: JAF DRAWN BY: ADG CHECKED BY: BWB</p>		
	<p>DATE: APRIL 11, 2006 JOB NO.: 05619 SHEET/OF: M11/5</p>		