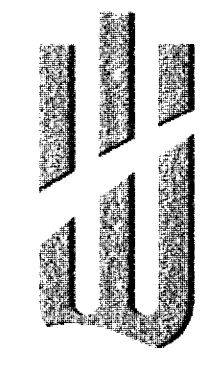


NOTE: TRAFFIC WILL BE CARRIED THROUGH CONSTRUCTION.

TRAFFIC SIGNAL IMPROVEMENTS AT OLIVER STREET & 29TH STREET NORTH

2004 SIGNALIZATION PROGRAM - PHASE III
PROJ. NUMBER: 472-84067
OCA NUMBER: 706911



CITY OF WICHITA, KANSAS
SEDGWICK COUNTY
CITY POPULATION - 325,000

WICHITA

UTILITES

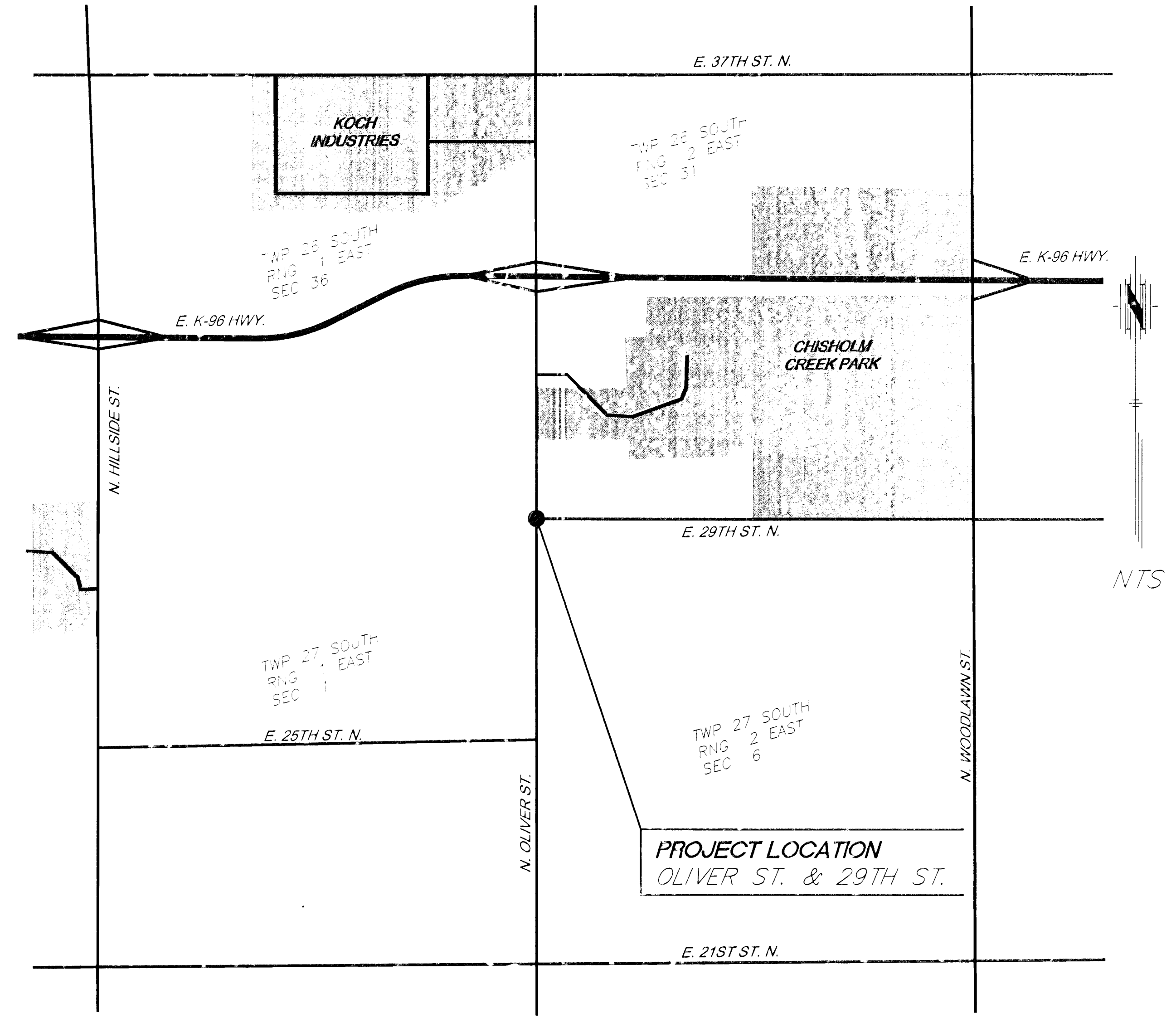
- | | |
|--------------------------------------------------------------------------------------------------------------------------------------------------------------------------------------------------------------------------------------------------------------------------------------------------------------------------------------------------------------------------------------------------------------------------------------------------------------------------------------------------------------------------------------------------|---------------------------------------------------------------------------------------------------------------------------------------------------------------------------------------------------------------------------------------------------------------------------------------------------------------------------------------------------------------------------------------------------------------------------------------------------------------------------------------------------------------------------------------------------------------------------------------------------------------------------------|
| <p>Wichita Water & Sewer
City Hall - 8th Floor
455 N. Main
Wichita, Kansas 67202
Bill Perkins (316) 268-4555</p> <p>Wichita Storm Water Utility
City Hall - 455 N. Main
Wichita, Kansas 67202
Andy Busada (316) 268-4068</p> <p>Southwestern Bell Telephone
154 N. Broadway, Rm. 210
Wichita, Kansas 67202
Jim Toben (316) 268-2245</p> <p>Telecommunications
Wichita Public Schools
Data Processing Center
432 W. 3rd St.
Wichita, Kansas 67203
Kirk Schmitt (316) 833-4209</p> | <p>Kansas Gas Service (formerly Westar Energy Gas)
1021 E. 26th St. North
Wichita, Kansas 67219
Jim Stoltz, P.E. (316) 832-3122</p> <p>Westar Energy (formerly Westar Energy Electric)
1900 E. Central - 3rd Floor
Wichita, Kansas 67214
Randy Truitt (316) 261-6512</p> <p>Multimedia Cablevision, Inc.
701 E. Douglas
3rd Floor - Engineering Dept.
Wichita, Kansas 67209
Mr. Behrooz-Dahem (316) 262-4270 Ext. 743</p> <p>Aguila Net (formerly Peoples Natural Gas)
1611 S. Hoover Rd.
Wichita, Kansas 67209
Calvin Briggs (316) 942-8811
Emergency 800-527-0357</p> |
|--------------------------------------------------------------------------------------------------------------------------------------------------------------------------------------------------------------------------------------------------------------------------------------------------------------------------------------------------------------------------------------------------------------------------------------------------------------------------------------------------------------------------------------------------|---------------------------------------------------------------------------------------------------------------------------------------------------------------------------------------------------------------------------------------------------------------------------------------------------------------------------------------------------------------------------------------------------------------------------------------------------------------------------------------------------------------------------------------------------------------------------------------------------------------------------------|

INDEX OF SHEETS

Sh. No.	Description
1	Title Sheet
2	Traffic Signal Plan
3	Bill of Materials
4-7	Traffic Signal Details

GENERAL NOTES

1. Existing underground (U/G), overhead (O.H.) utilities and drainage structures have been plotted from available information and therefore, their locations must be considered approximate only. It is the responsibility of the Contractor to exactly locate each utility prior to construction.
2. All construction methods and materials shall conform to the City of Wichita, Kansas "Traffic Signal Specifications" and/or "Traffic Signal Detail" plan sheets.
3. Minor relocations of junction/service boxes to avoid conflicts may be allowed with the approval of the City of Wichita, Kansas to facilitate installation.
4. All traffic signal indicators shall be L.E.D. (Light Emitting Diode) Displays.
5. All traffic signal equipment shall be "Black" in color per City Standard. All signal poles shall be galvanized prior to colored powder coating.
6. Contractor shall coordinate traffic signal turn-on with the City of Wichita, Kansas.
7. The Contractor may be required to close lanes during the placement of the traffic signal poles. Any lane closures should be coordinated with the Engineer. Lane closures will only be permitted during daylight and non-peak traffic hours. Parking area can be used at these times by the Contractor for storage. Peak hours are Monday thru Friday, 7:00 A.M. to 9:00 A.M. and 4:00 P.M. to 5:30 P.M.
8. Where any curb, gutter, or combination curb and gutter needs to be removed for conduit trenching, signal pole construction, or any other purpose, replacement shall be Class A Concrete (AE) shaped to match the existing adjacent section.
9. Where any existing sidewalk needs to be removed for conduit trenching, signal pole construction, or any other purpose, removal should include only complete squares or slabs. Whenever a part of a square or slab of existing concrete sidewalk, driveway or pavement is broken or damaged, the entire square or slab shall be removed and the concrete reconstructed. Replacement shall be Class A (AE) to the same thickness as that which was removed.
10. Existing permanent pavement markings damaged or destroyed by the construction activity shall be replaced by the Contractor.
11. Excess excavated material shall be disposed of at a site approved by the Engineer and provided by the Contractor.
12. Pavement removal, rock excavation, removal of existing pole bases, plant mix bituminous mixture, aggregate base material, saw-cutting, and other items of work associated with the installation of the pole bases, conduit, service boxes or the proposed traffic signal shall be considered incidental to the bid item "Traffic Signal Installation", and shall not be measured or paid separately.
13. Westar Energy shall be notified by the Contractor prior to beginning work at each location to determine the proper type and method of hook up. This coordination shall include provision of the meters to be installed, installation of the new street lights on the signal poles, and the removal of the existing light poles after the new street lights are in operation.
14. The Contractor shall contact Southwestern Bell Telephone (Jim Toben at 316-268-2759) a minimum of 48 hours prior to any excavation at intersections with underground telephone ducts.
15. The Contractor shall fuse all overhead power on the riser pole. Underground power feed shall be fused by Westar Energy ahead of the connection point provided the Contractor.
16. Luminaires, luminaire arms, and wiring for the proposed street lights shall be provided and installed by others. The Contractor shall leave a pull wire in all 2" PVC conduit.
17. Prior to bidding, the Contractor shall contact Westar Energy (Jimmy Washington 316-261-6315) to become familiar with the requirements and fees imposed upon the contractor to gain access to Westar Energy service boxes.
18. Construction staking shall be done by the City of Wichita.



PLANS PREPARED AND SUBMITTED BY:

GBA GEORGE BUTLER ASSOCIATES, INC.
Engineers - Architects

One Renner Ridge
9801 Renner Boulevard
Lenexa, Kansas 66219-9745
Telephone (913) 492-0400

Scott Canfield
SCOTT CANFIELD, P.E., PTOE
Project Design Engineer

18 Aug 04
DATE



PLANS APPROVED BY:
CITY OF WICHITA

JIM ARMOUR, P.E.
City Engineer

DATE