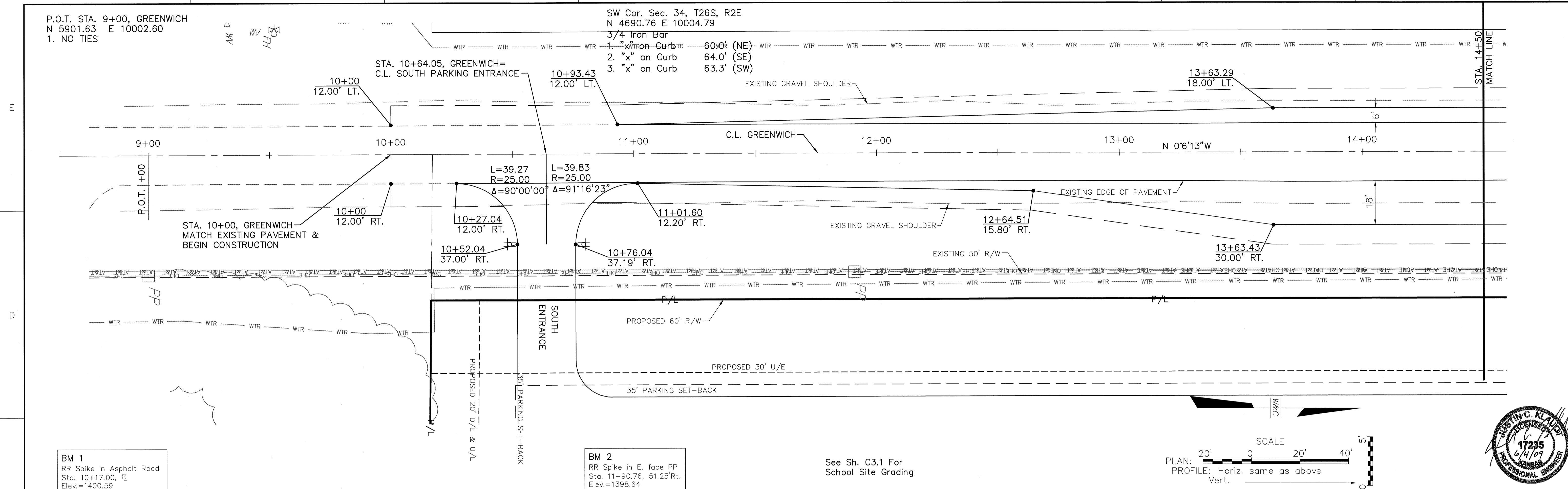


P.O.T. STA. 9+00, GREENWICH
 N 5901.63 E 10002.60
 1. NO TIES

SW Cor. Sec. 34, T26S, R2E
 N 4690.76 E 10004.79

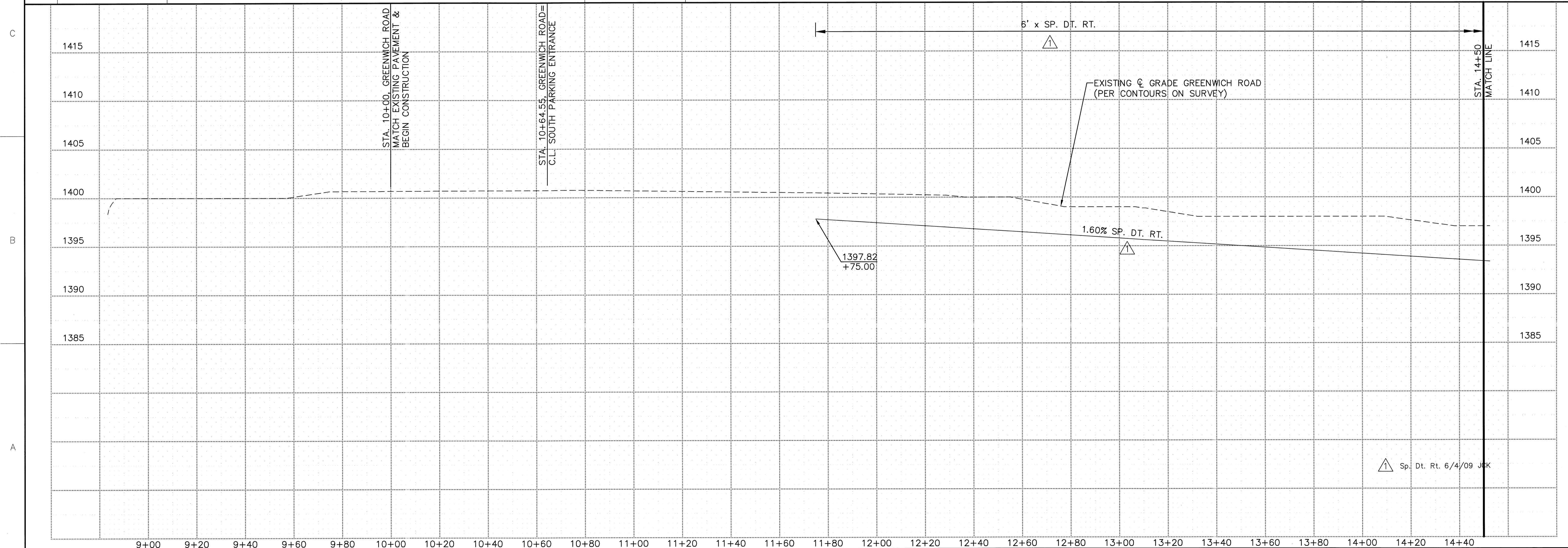
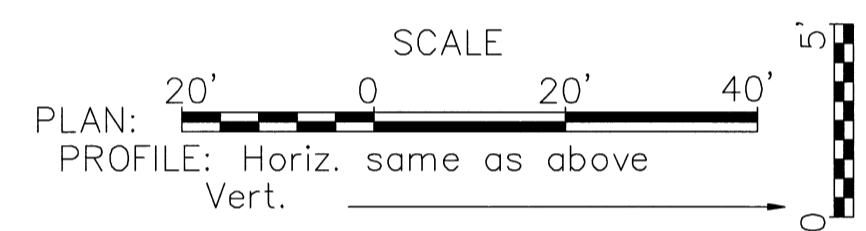
- 3/4 Iron Bar
 1. "x" on Curb 60.0' (NE)
 2. "x" on Curb 64.0' (SE)
 3. "x" on Curb 63.3' (SW)



BM 1
 RR Spike in Asphalt Road
 Sta. 10+17.00, ϕ
 Elev.=1400.59

BM 2
 RR Spike in E. face PP
 Sta. 11+90.76, 51.25' Rt.
 Elev.=1398.64

See Sh. C3.1 For
 School Site Grading



WILSON & COMPANY
 Engineers & Architects
 1700 East Iron - Salina, Kansas 67401
 Tel 785 - 827-0433 Fax 785 - 827-5949

FACILITY IMPROVEMENTS
CIRCLE UNIFIED SCHOOL DISTRICT U.S.D. NO 375
GREENWICH ROAD
NEW ELEMENTARY SCHOOL

DESIGN	JCK
DRAWN	CJT
DATE	06/09
FILE NO.	08-500-037-00
SHEET NO.	C2.2