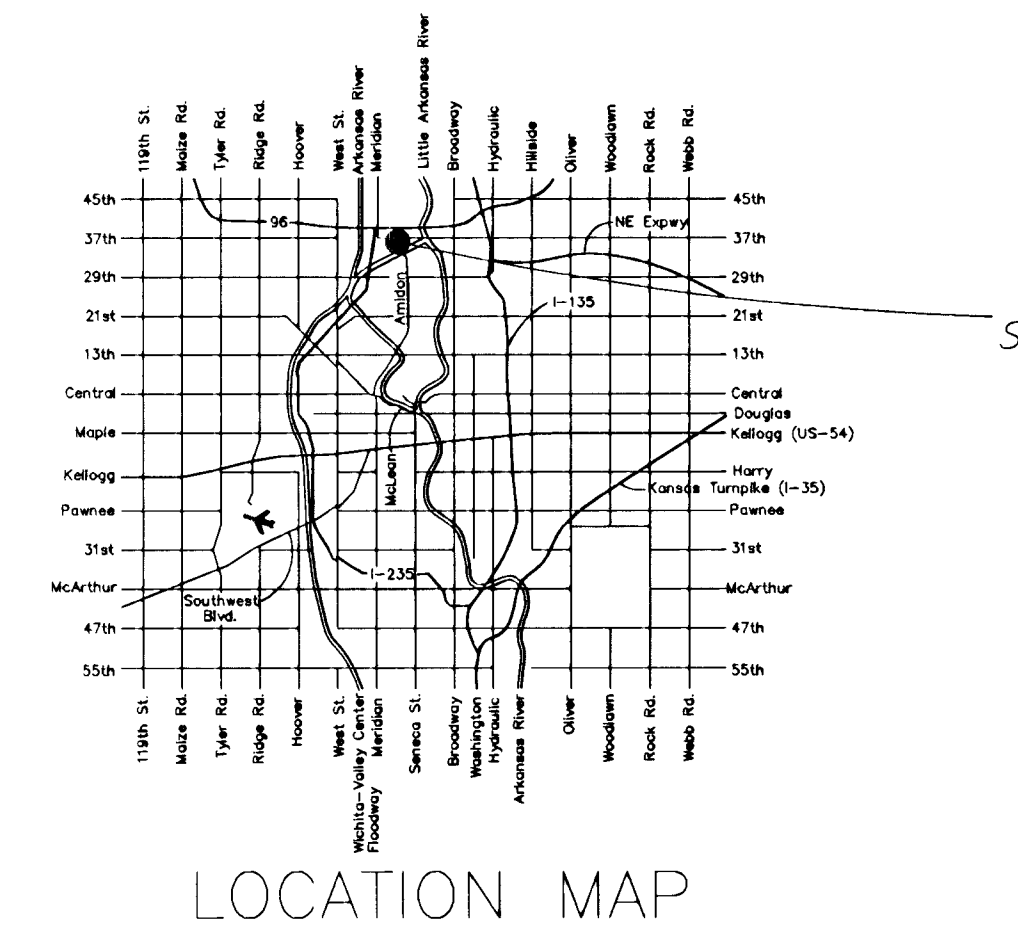


# STORM SEWER IMPROVEMENTS TO SERVE INTERSECTION OF 35th & PAYNE Project Number 468 84200 CITY OF WICHITA, KANSAS

JIM ARMOUR, PE, CITY ENGINEER

OCA #660515



Index of Sheets:

1. Cover Sheet
2. SWS Line 1 Plan & Profile
3. Demolition Plan & Staking Coordinates
4. Type 1-A Curb Inlet
5. Type P Shallow Manhole Detail
6. Erosion BMPs

GENERAL NOTES

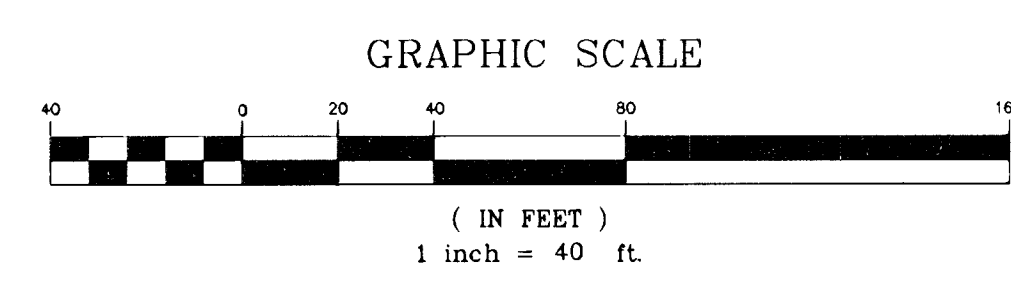
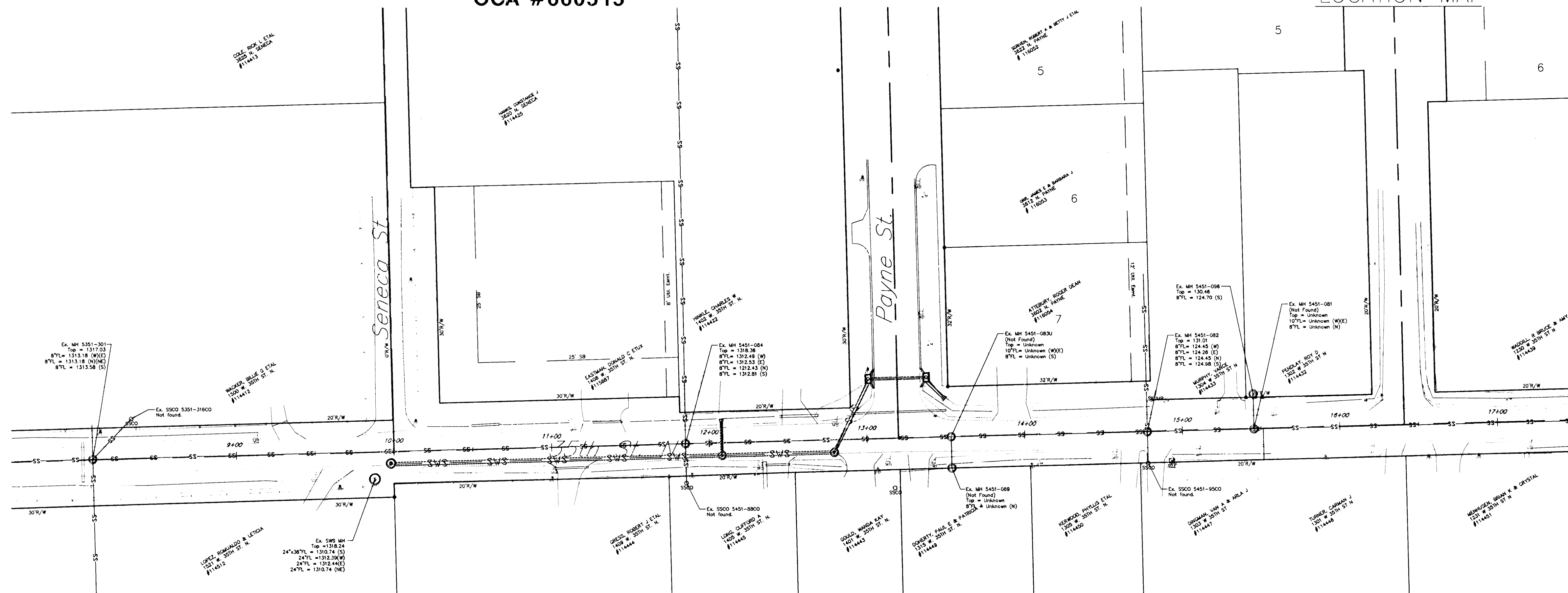
1. Contractor will be required to provide notice to utility companies a minimum of twenty-four (24) hours prior to any excavation, as follows:  

Kansas One-Call	687-2470
-----------------	----------

The Contractor must notify the following in case of an emergency:

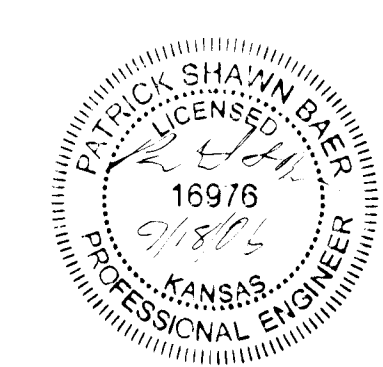
Cox Communications	262-4270
or	263-2061
Westar Energy/	
Kansas Gas & Electric Company	1-888-482-4950
Southwestern Bell Telephone Company	1-571-2611
City of Wichita Water Department	268-4908
City of Wichita Sewer Department	268-4071
Aquila Natural Gas	942-8811
or	1-800-303-0357
2. Exist. utilities and their locations, as shown on the plans, represent the best information obtainable for design. Location information has been obtained from the various utility companies and is either from company record drawings or company-provided field locations. The Contractor will be required to work around existing utilities which do not conflict with proposed construction.
3. The Contractor to verify utility locations prior to construction of this project.
4. Utility service and installation shall be coordinated with the respective utility owners. Contacts are:  

Kansas Gas Service	Jim Coe	832-3126
Westar Energy	Miles Capps	261-6824
Aquila Networks	Calvin Briggs	941-1608
Wichita Water	Paul Bryant	268-4555
Southwestern Bell	Jim Toben	268-2759
Cox Communications	Mark Anaya	262-4270
5. All lawn/turf areas disturbed by construction of proposed improvements shall be restored with seed. All seeding work shall be in accordance with the City of Wichita standard specifications and the City of Wichita administrative regulation No. AR7B which governs cleanup and replacement following construction.
6. Traffic affected by the construction of this project shall be handled in accordance with the latest edition of the Manual on Uniform Traffic Control Devices.
7. Properties within the project may have underground irrigation systems (lawn sprinklers) which conflict with new construction. Contractor shall remove such components as needed during construction of the project. The irrigation system shall be reinstalled in like kind before project completion. Any irrigation system modifications required because of project improvements shall be coordinated with the property owner. Portions of underground irrigation systems not in conflict with new construction shall be protected from damage and shall remain in place. All work related to underground irrigations/sprinklers shall be subsidiary to Site Restoration.
8. The contractor shall be responsible for preserving property irons. The contractor will be required to re-establish any property irons which are damaged or destroyed by his construction operations. Such irons shall be re-established by a licensed land surveyor in accordance with state laws.
9. Construction shall be in accordance with the City of Wichita standard construction practices.



Benchmark:  
 "□" cut on back of curb, 12' N. of the S. end of the Curb and Gutter, W. side of Payne St., approx. 50' N. of centerline of 35th St. N. by PP.  
 Elev. = 1317.41 (MSL)  
 City Disc. - 42' W. and 24' N. of the of centerline of intersection of 35th St. N. and Arkansas Ave.  
 Elev. = 1317.61

September 2006



**kemiller**  
 engineering

516 S. Market,  
 Wichita, KS 67202      316/264-0242