

SU Project 562-855107

STORM WATER SEWER IMPROVEMENTS

to serve

21st STREET NORTH & VALLEYVIEW

CITY OF WICHITA, KANSAS

James L. Armour, P.E. City Engineer

Project Number

468-84198

O.C.A. Number

660517

GENERAL NOTES:

1. Contractor will be required to provide notice to utility companies a minimum of forty-eight (48) hours prior to any excavation, as follows:

Kansas One-Call 687-2470

The Contractor must notify the following in case of an emergency:

Cox Communications	262-4270
Kansas Gas Service	1-888-482-4950
Westar Energy	383-8650
Aquila Energy	1-800-303-0357
SBC	268-2245
City of Wichita Water Dept.	268-4563
City of Wichita Sewer Maint.	268-4024
City of Wichita Storm Sewer Maint.	268-4090
City of Wichita Traffic Maint.	268-4034
Conoco Phillips Pipeline Co.	1-877-267-2290
Southern Star Pipeline Co.	529-6600
Kinder-Morgan Pipeline Co.	1-888-844-5658

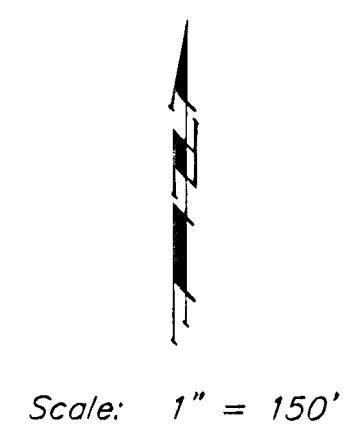
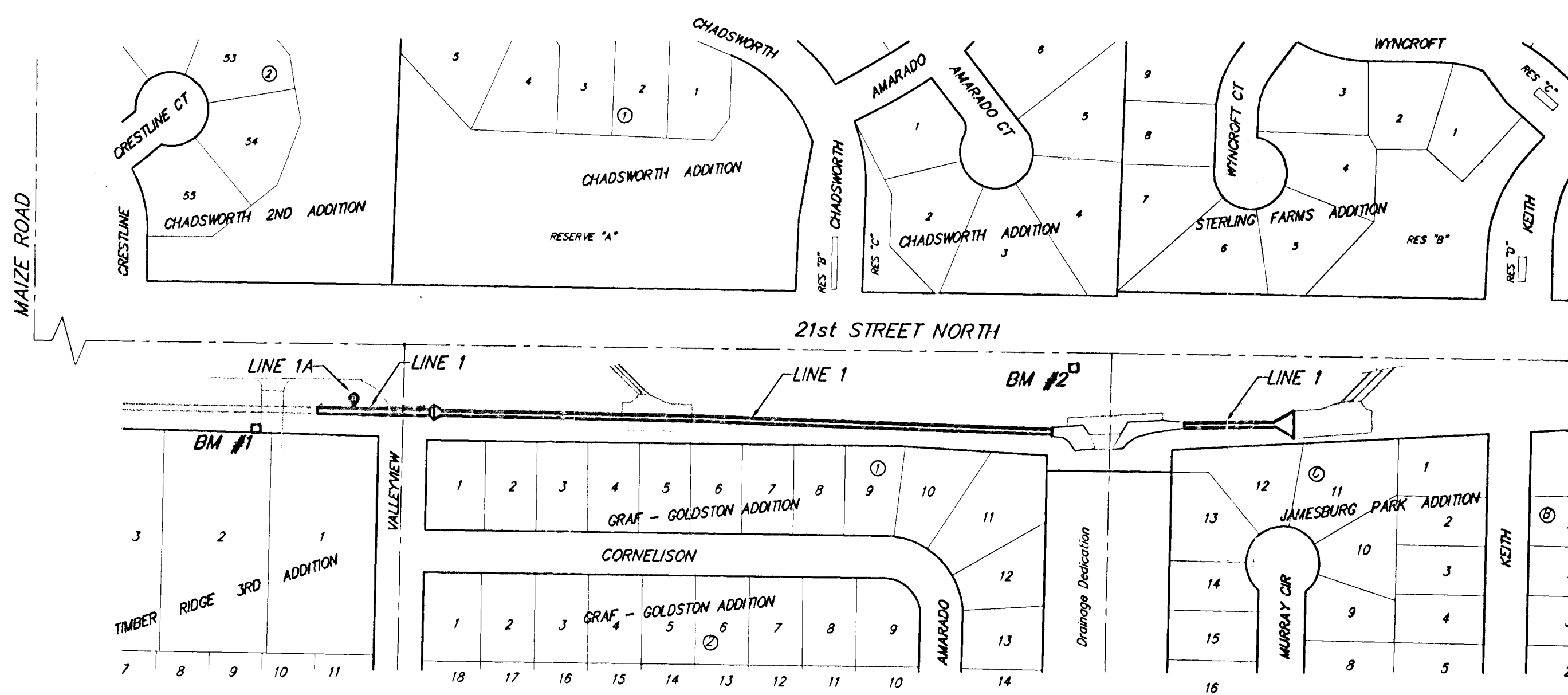
2. Utility service lines, poles, valve boxes, meters, and etcetera are to be adjusted as necessary by others prior to construction unless the plans specifically call for their adjustment by the Contractor or unless the plans specifically identify a utility to be adjusted by its owner during construction. Existing utilities and their location, as shown on the plans, represent the best information obtainable for design. The Contractor will be required to work around existing utilities within the right-of-way which do not conflict with proposed construction.

3. Rubble from the removal of miscellaneous structures and excess excavation which is to be wasted shall be disposed of on sites to be provided by the Contractor. These sites shall be approved by the Engineer as to suitability, appearance and site location. Locations, in the opinion of the Engineer, that will leave an unsightly appearance will not be approved. All disposal sites must be approved by the Kansas Department of Health and Environment. Material either stockpiled or disposed of in a flood plain would require a Kansas State Board of Agriculture permit. Any material dumped in waters of the United States or wetlands is subject to U.S. Corps. of Engineers permitting regulations. Any material buried or stockpiled beyond approved construction limits would require additional archaeological investigations unless buried in a previously approved borrow location.

4. Trees and shrubs in public right-of-way which are in direct conflict with proposed new construction shall be removed by the Contractor with the Engineer's approval. Trees and shrubs which are not in direct conflict with proposed new construction shall be saved and protected from damage.

5. The Contractor shall be responsible for preserving property irons. The Contractor will be required to re-establish any property irons which are damaged or destroyed by his construction operations. Such irons shall be re-established by a licensed land surveyor in accordance with state laws.

6. The Contractor shall install Contraction Joints every twelve feet starting at Sta. 0+12 per details, pages 3 and 4. The Contractor shall install an Expansion Joint per detail, page 2, in place of every tenth Contraction Joint starting at Sta. 1+20.



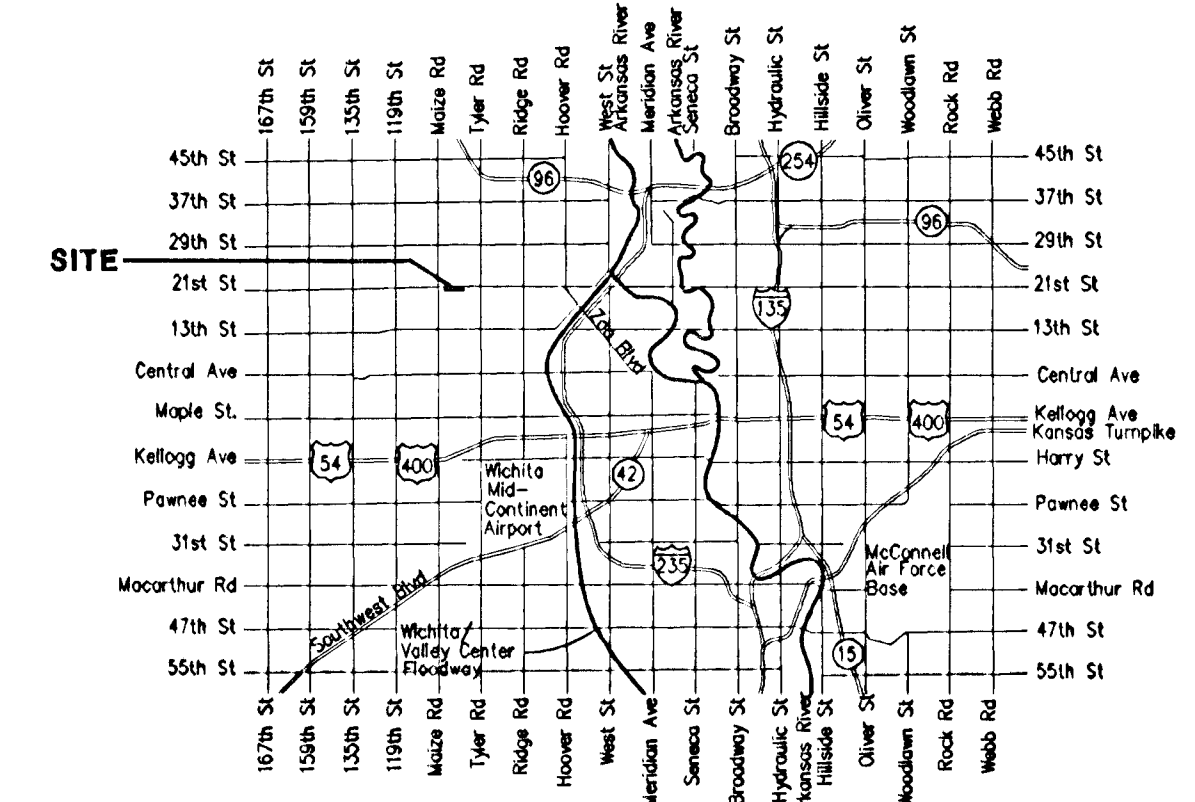
Benchmarks

BM #1: "□" Cut in Top of Curb, West Curb Adjacent to Lot 2, Timber Ridge 3rd Addition. Elev. = 1347.41 M.S.L.

BM #2: "□" Cut in Top of Curb East End of Center Median in 21st Street North, West of Drainage Dedication. Elev. = 1350.18 M.S.L.

Sheet Index

Title Sheet	1
Line 1 & Line 1A	2-4
RCBC Details	5-6
Handrail Details	7
EC Mat Details	8
Special Yard Inlet Detail	9



Vicinity Map



Baughman Company, P.A. 315 Ellis St. Wichita, KS 67211 P 316-262-7271 F 316-262-0144
ENGINEERING | SURVEYING | PLANNING | LANDSCAPE ARCHITECTURE