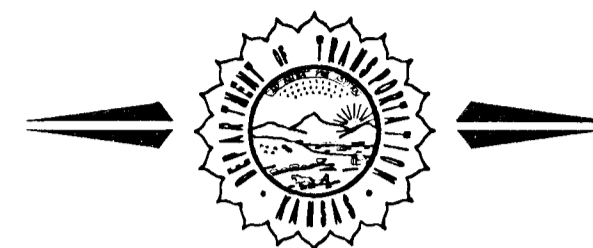


STATE OF KANSAS
DEPARTMENT OF TRANSPORTATION



CONSTRUCTION PLANS FOR PROPOSED
**29th STREET NORTH
MAIZE ROAD to TYLER ROAD**
FEDERAL AID URBAN SYSTEM PROJECT

FOR
THE CITY OF WICHITA,
SEDGWICK COUNTY, KANSAS

FHWA REGION NO.	STATE	PROJECT NO.	FISCAL YEAR	SHEET NO.	TOTAL SHEETS
7	KANSAS	N 87-0294-01	2004	1	129

STP-N 029(401)

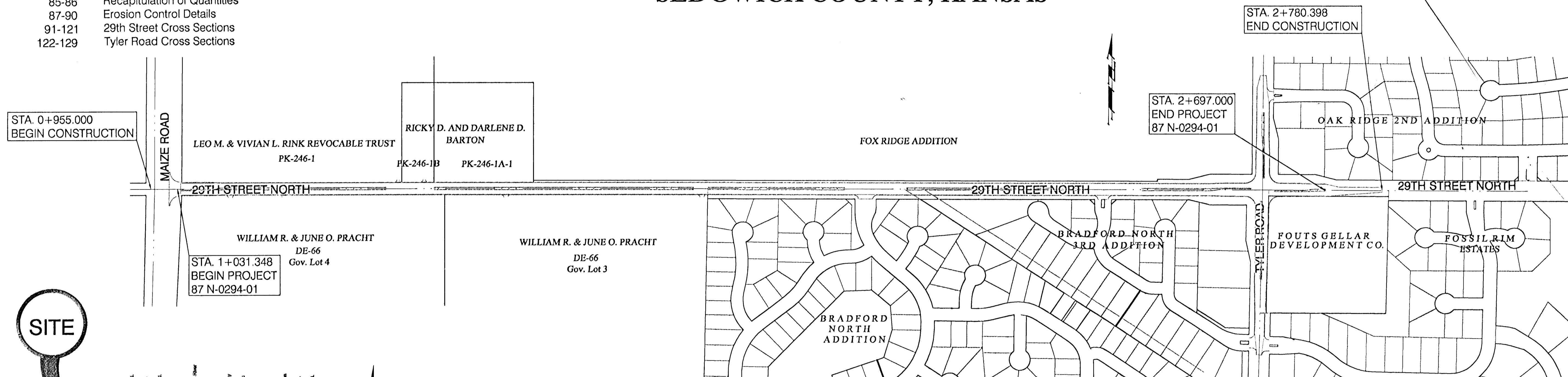
GRADING
STORM SEWER
SURFACING
PAVEMENT MARKING

Note:
All Dimensions shown without the SI suffix
are in meters. All elevations shown are in
meters

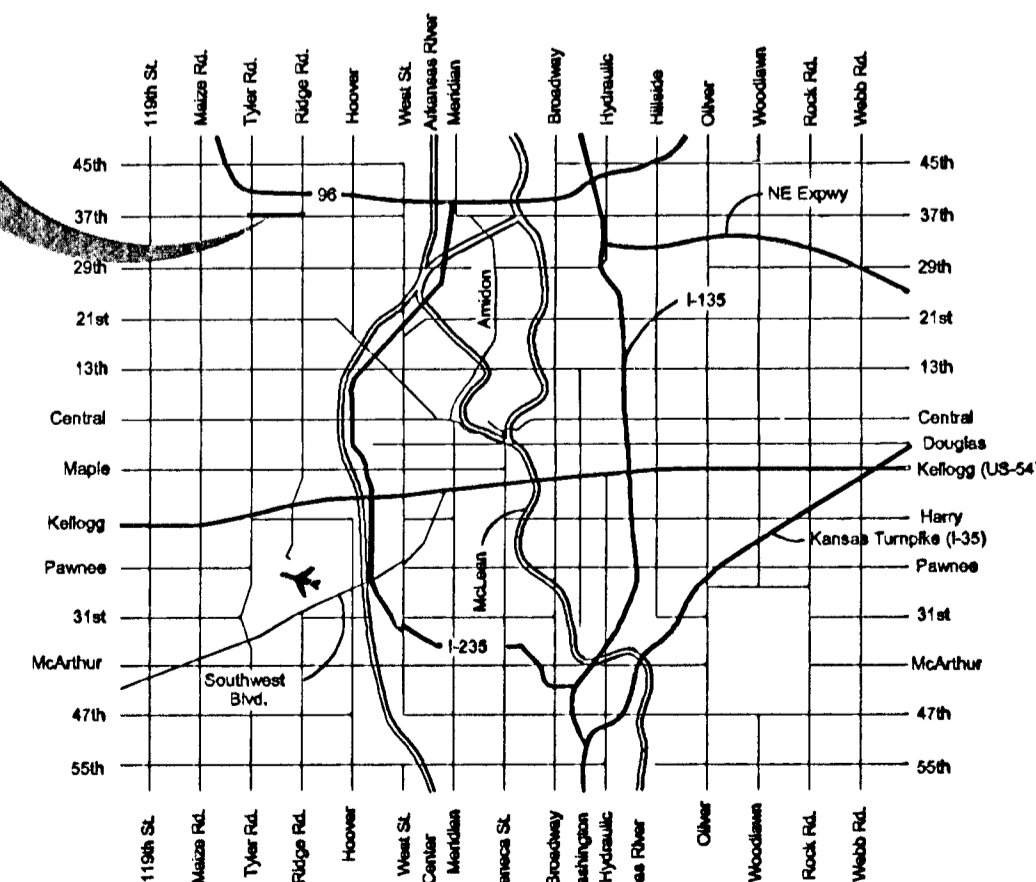
Traffic Note:
Traffic shall be carried through construction.
See sheet no. 75a - 81 for Construction Sequences.

INDEX

1	Title Sheet
2	Key Sheet
3	General Notes
4-6	Typical Sections
7-8	Pavement Details
9-10	Valley Gutter Details
11	Standard Drive Details
12-24	29th Street North Paving Plans
25-27	Tyler Road Paving Plans
28	Intersection Joint Plan
29	Intersection Grading Plan
30-51	Storm Water Sewer Plan/Profiles
52-64	Storm Water Sewer Details
65	29th Street & Maize Road Signalization Plan
66	29th Street & Maize Road Wiring Plan
67	29th Street & Tyler Road Signalization Plan
68	29th Street & Tyler Road Wiring Plan
69-72	Marking & Signing Plan
73-75	Traffic & Street Sign Details
75a-81	Construction Sequencing
82-83	Traffic Control Details
84	Drainage Plan
85-86	Recapitulation of Quantities
87-90	Erosion Control Details
91-121	29th Street Cross Sections
122-129	Tyler Road Cross Sections



SITE



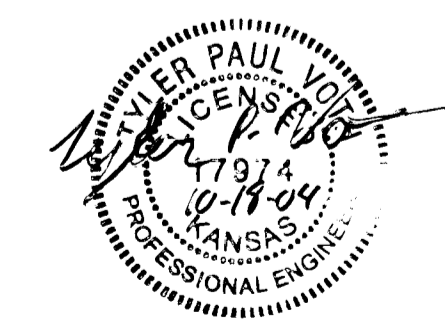
VICINITY MAP

City Project No. 472-83863
O.C.A. No. 706868
Oct. 2004

DESIGN DATA

AADT (2000)	1,000
AADT (2030)	14,000
DHV	10%
T	3%
V	65 km/hr
C of A	N/A
Clear Zone	1.8m

Gross Length of Project	1,665.652 m
Exceptions	0.000 m
Additions	0.000 m
Net Length of Project	1,665.652 m
Net Length of Bridges	0.000 m
Net Length of Road	1,665.652 m



APPROVED - DATE

Jim Armour 10/18/04

JIM ARMOUR, P.E., ACTING CITY ENGINEER
CITY OF WICHITA, KANSAS



BAUGHMAN COMPANY, P.A.
ENGINEERING, SURVEYING, & PLANNING
319-262-7271 • 315 ELLIS • WICHITA, KANSAS 67211