

UTILITIES SHOWN REPRESENT THE BEST INFORMATION AVAILABLE FOR DESIGN. PROJECT UTILITIES MAY BE PRESENT ON THIS PROJECT. THE CONTRACTOR SHALL BE RESPONSIBLE FOR DETERMINING THE EXACT LOCATION, DEPTH AND SIZE OF ALL UNDERGROUND UTILITIES PRIOR TO CONSTRUCTION. THE CONTRACTOR SHALL BE LIABLE FOR ANY DAMAGE CAUSED BY THE FAILURE TO DO SO.

#	Northing	Easting	Elevation
1	6080.8856	4630.7929	1291.500
2	6052.0884	4646.7929	1287.500
3	6001.6710	4630.7929	1291.500
4	6030.7711	4646.7929	1287.500
5	6230.6670	4928.2556	1287.500
6	6269.3497	4928.2556	1287.500
7	6411.4373	5205.7084	1288.500
8	6380.6457	5205.7084	1288.500
9	6535.6957	5394.0872	1289.500
10	6495.4298	5394.0872	1289.500
11	6550.2458	5402.0872	1291.500
12	6491.0312	5402.0872	1291.500
13	6258.6598	5013.4411	1288.500
14	6265.6622	5008.7482	1288.500
15	6254.3194	5021.5328	1290.500
16	6240.9823	5000.5117	1290.500
17	6233.6587	4996.4321	1291.500
18	6252.0650	5025.4474	1291.500
19	5825.6077	5004.8082	1288.500
20	5828.7746	5009.8276	1288.500
21	5494.5059	4997.8699	1289.500
22	6047.4100	4652.1400	1286.500

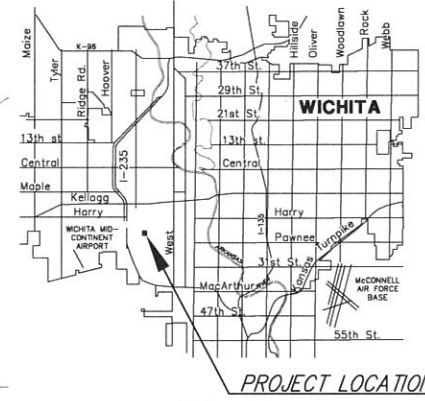
Slope	Storage
1286.5	19,088
1287.5	45,733
1288.5	68,675
1289.5	78,015
1291.5	87,567

RETURN PERIOD	Q IN (cfs)	Q OUT (cfs)	MAX. D. EXIST (ft)	MAX. D. ADJ. (ft)
2	52.54	7.92	1289.44	8.82
5	66.09	8.34	1289.80	13.17
10	77.82	8.68	1290.10	19.51
25	92.00	9.07	1290.45	24.74
50	104.59	9.35	1290.72	31.35
100	118.02	9.84	1291.00	41.80

As-Built Plans - Built as Designed
Contractor: Fremar Corporation
Inspector: Jerry Runnebaum - C.E.D.
Dean Wallace - C.E.D.
.pdf by: CC, 7/09/2010

DETENTION POND
 LOTS 1&5, BLOCK 6,
 SOUTHWEST INDUSTRIAL ADDITION,
 LOCATED AT SHERIDAN AND ORIENT
 WICHITA, SEDGWICK COUNTY, KS
 COW PRIV. PROJ. NO. 1970 PPS (607861)
 JAMES L. ARMOUR, P.E., CITY ENGINEER
 APRIL 2009

INDEX OF SHEETS
 1 Plan
 2 Plat Map



NOTE TO CONTRACTOR

- GENERAL NOTES**
- ALL ELEVATIONS SHOWN ARE BASED ON MEAN SEA LEVEL ELEVATION.
 - CONTRACTOR WILL BE REQUIRED TO PROVIDE A MINIMUM ADVANCE NOTICE OF FORTY-EIGHT(48)HOURS TO UTILITY COMPANIES PRIOR TO STARTING ANY EXCAVATION AS FOLLOWS:
 KANSAS ONE CALL 887-2470
 THE CONTRACTOR MUST NOTIFY THE FOLLOWING IN CASE OF AN EMERGENCY:
 Cox Communications 262-4270 or 263-2061
 SBC 1-800-870-8390
 Kansas Gas Service 1-888-482-4950
 Westar 1-800-363-1183
 Aquila 1-800-303-0752
 City of Wichita(Water & Sewer) 268-4555

INSPECTION AND TESTING FOR THIS PROJECT IS TO BE PROVIDED BY A LICENSED CONSULTING ENGINEERING FIRM UNDER CONTRACT WITH THE OWNER/DEVELOPER. SAID INSPECTION TO BE IN ACCORDANCE WITH THE CITY OF WICHITA STANDARD CONSTRUCTION ENGINEERING PRACTICES AND CERTIFIED BY A LICENSED PROFESSIONAL ENGINEER. NO WORK SHALL BE PERFORMED IN DEDICATED EASEMENTS OR THE PUBLIC RIGHT-OF-WAY BY THE CONTRACTOR WITHOUT SUCH INSPECTION NOR SHALL ANY WORK BE COMMENCED IN DEDICATED EASEMENTS OR PUBLIC RIGHT-OF-WAY WITHOUT WRITTEN AUTHORIZATION BY THE CITY ENGINEER.

LEGEND

- △ - Section subdivision corner found
- - Survey monument found
- - Set 1/2"x24" rebar with cap stamped "ALPHA CLS-184"
- M - Measured
- C - Calculated measure
- Pr - Prorated
- RR - Railroad
- - Power pole
- - Guy anchor
- - Underground telephone pedestal
- ⊕ - Overhead electric
- ⊕ - Gas valve
- ⊕ - Fire hydrant
- ⊕ - Water valve
- ⊕ - Water meter
- SS - Sanitary Sewer

GRADING LEGEND

- Existing Contour Elevation
- Proposed Spot Elevation
- Existing Drainage Flow Direction
- Proposed Drainage Flow Direction
- Proposed Ridge Line
- Proposed Detention Area
- Proposed Watershed Boundary

BENCHMARK

City of Wichita BM #2
 Brass disc in top of curb 1.0 foot
 South of the South curb return in
 the Southeast quadrant at the
 intersection of Custer Avenue and
 Lydia Avenue.
 Elev = 1292.01
 N = 5548.50
 E = 5465.31

APPROVED AS NOTED
 By CITY ENGINEER OF WICHITA

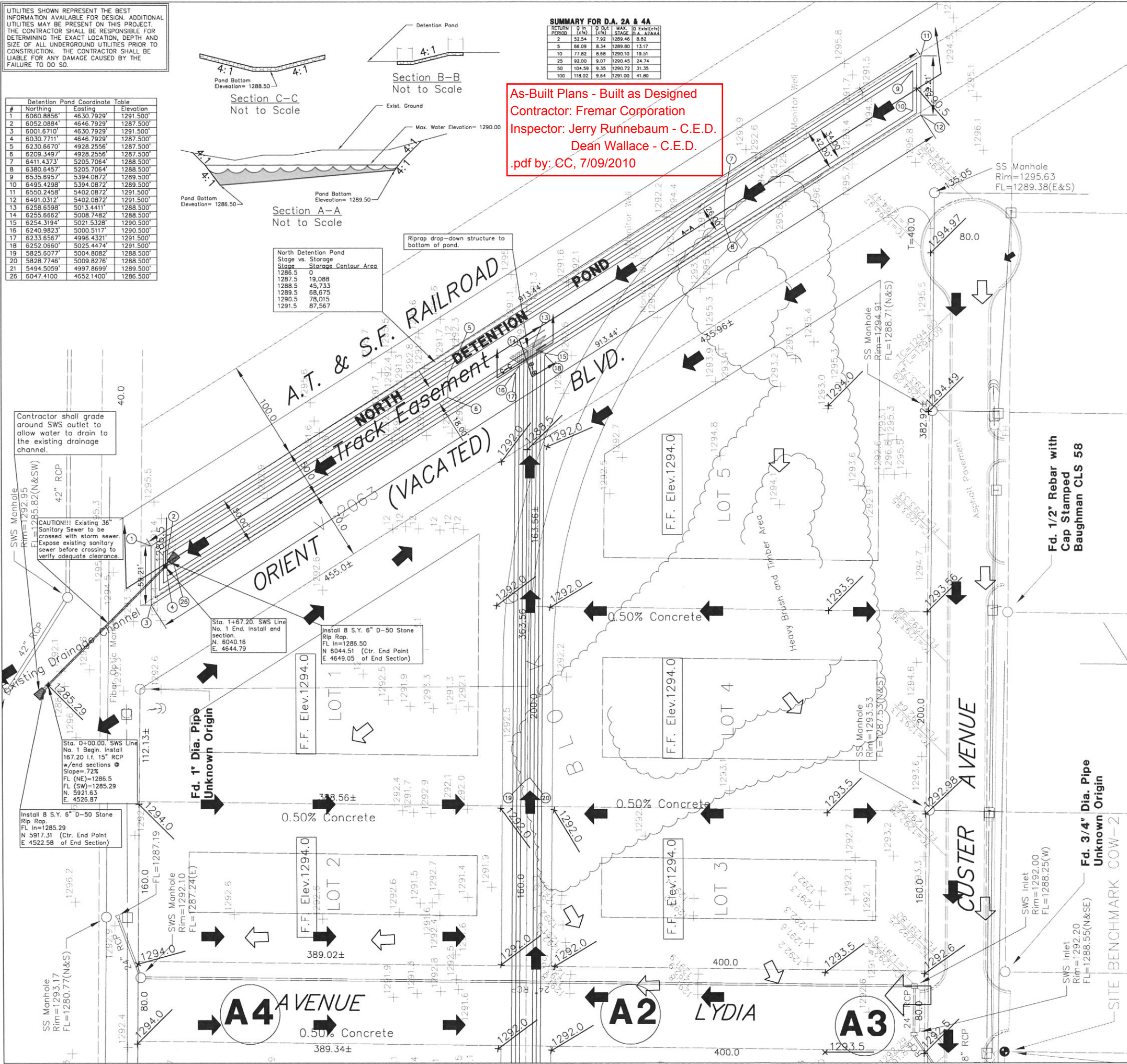
Sanitary Sewers _____
 Storm Sewers _____
 Driveway Approaches _____
 Water Mains _____
 Paving _____



SOUTHWEST INDUSTRIAL ADDITION
DETENTION POND
 WICHITA, SEDGWICK COUNTY, KANSAS
 PROJ. NO.: 20071514
CERTIFIED ENGINEERING DESIGN, P.A.
 810 WEST DOUGLAS, SUITE C
 WICHITA, KANSAS 67203
 PH.(316)262-8808 FAX.(316)262-1669

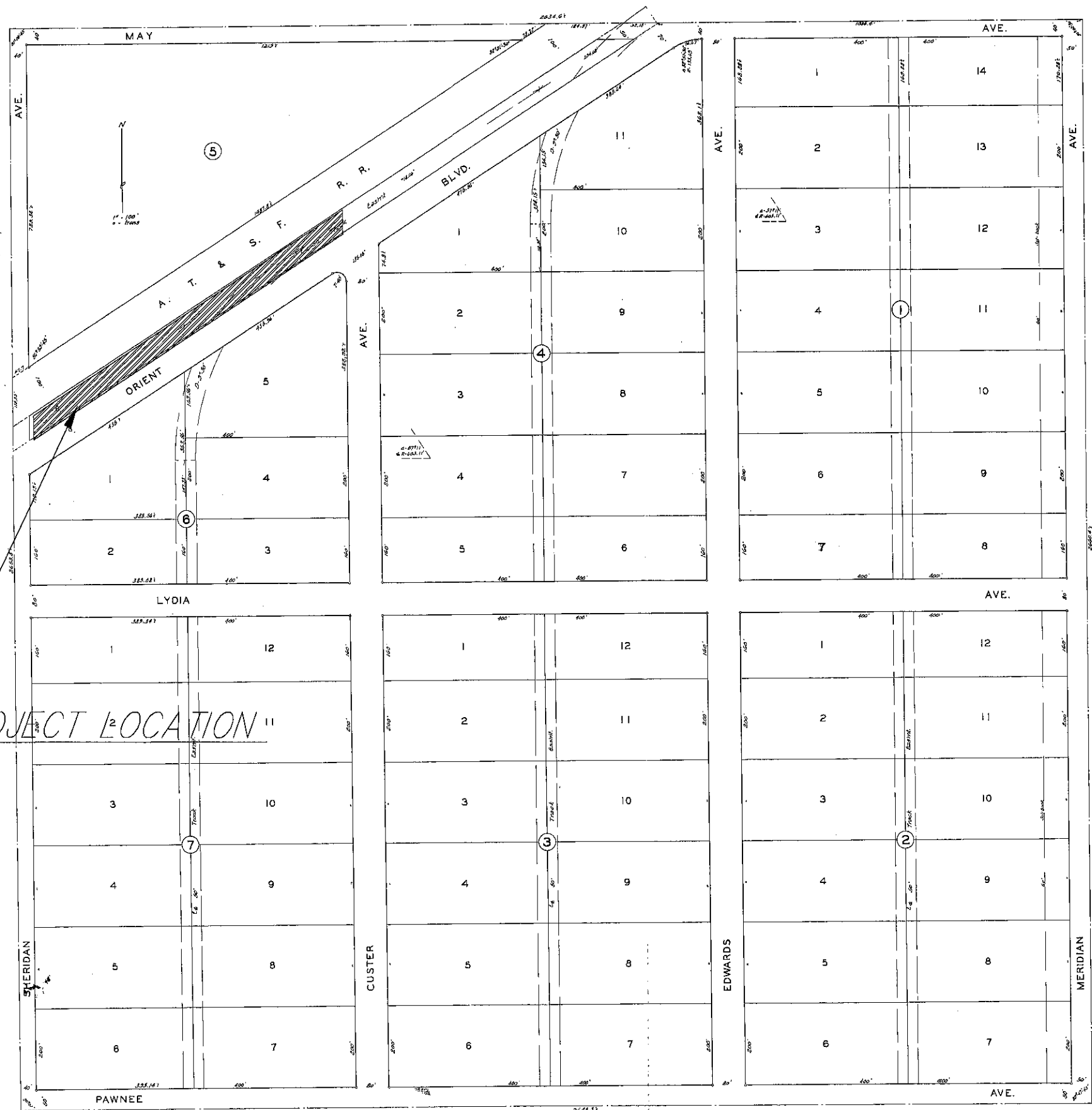
DESIGNED: HDF	SCALE: 1" = 50'	SHEET 1
DRAWN: CC	DATE: MAY 2009	TOTAL 3
CHECKED: HDF	CED FILE: 070040T.dwg	

SURVEY DISCLAIMER:
 TOPOGRAPHIC SURVEY AND CONTOUR MAP USED IN PREPARING PLANS WAS PROVIDED BY ALPHA LAND SURVEYS, INC., C/O LLOYD P. DORZWEILER, LS #885, ONE EAST NINTH AVENUE, HUTCHINSON, KS, 67501. CERTIFIED ENGINEERING DESIGN, P.A. DOES NOT GUARANTEE SURVEY ELEVATIONS FOR ACCURACY. CONTRACTOR SHALL VERIFY ELEVATIONS AND NOTIFY ENGINEER OF ANY DISCREPANCIES.



SOUTHWEST INDUSTRIAL ADDITION TO WICHITA KANSAS

S2-5-13



State of Kansas } ss. I, Clyde M. Baughman, Surveyor,
Sedgwick County } ss. I, Clyde M. Baughman, Surveyor,
in Sedgwick County and State do hereby certify that
I have surveyed and platted SOUTHWEST
INDUSTRIAL ADDITION to Wichita, Kansas and
that the accompanying plat is a true and cor-
rect exhibit of the property surveyed described
as follows: The S.E. 1/4 of Sec. 36, Twp. 27-S,
R. 1-W. of the 6th P.M., except the right of way
of the A.T. & S.F. R.R.

Clyde M. Baughman Surveyor

Know all men by these presents
that I, Josephine Alexander have caused the
land described in the surveyors certificate to
be platted into lots, blocks, avenues and a bou-
levard to be known as "SOUTHWEST INDUSTRIAL
ADDITION" to Wichita, Kansas. Special easements
are hereby provided for the construction, main-
tenance and operation of railroad service to said addi-
tion. The avenues and boulevard are hereby dedi-
cated to and for the use of the public.

Josephine Alexander

State of Kansas } ss. Be it remembered that on
this 16 day of July 1933 before me
a notary public in Sedgwick County and State
came Josephine Alexander, to me known to be
the same person who executed the foregoing
instrument of writing and duly acknowledged the
execution of the same to be her voluntary act and
deed. In testimony whereof I have hereunto set my
hand and affixed my notarial seal the day and
year above written.

Alfred Anderson Notary Public
My Commission Expires March 26, 1937

This plat of SOUTHWEST
INDUSTRIAL ADDITION to Wichita, Kansas, has been
submitted to and considered by the City Planning
Commission of Wichita, Kansas, and is hereby
transmitted to the Board of City Commissioners
with the recommendation that such plat be app-
roved as proposed. Dated this 14th day of
July 1933.
The City Planning Commission of Wichita, Kansas.

Benjamin Alexander Vice
Josephine Alexander Secretary

Approved by the Board of City
Commissioners this 14th day of July
1933.

Walt Keeler Mayor
Alfred Anderson City Clerk

Approved by the Board of
County Commissioners this 5th day of
August 1933.

Charles Schuster County Clerk

Entered on transfer record this
8th day of August 1933.

Charles Schuster County Clerk

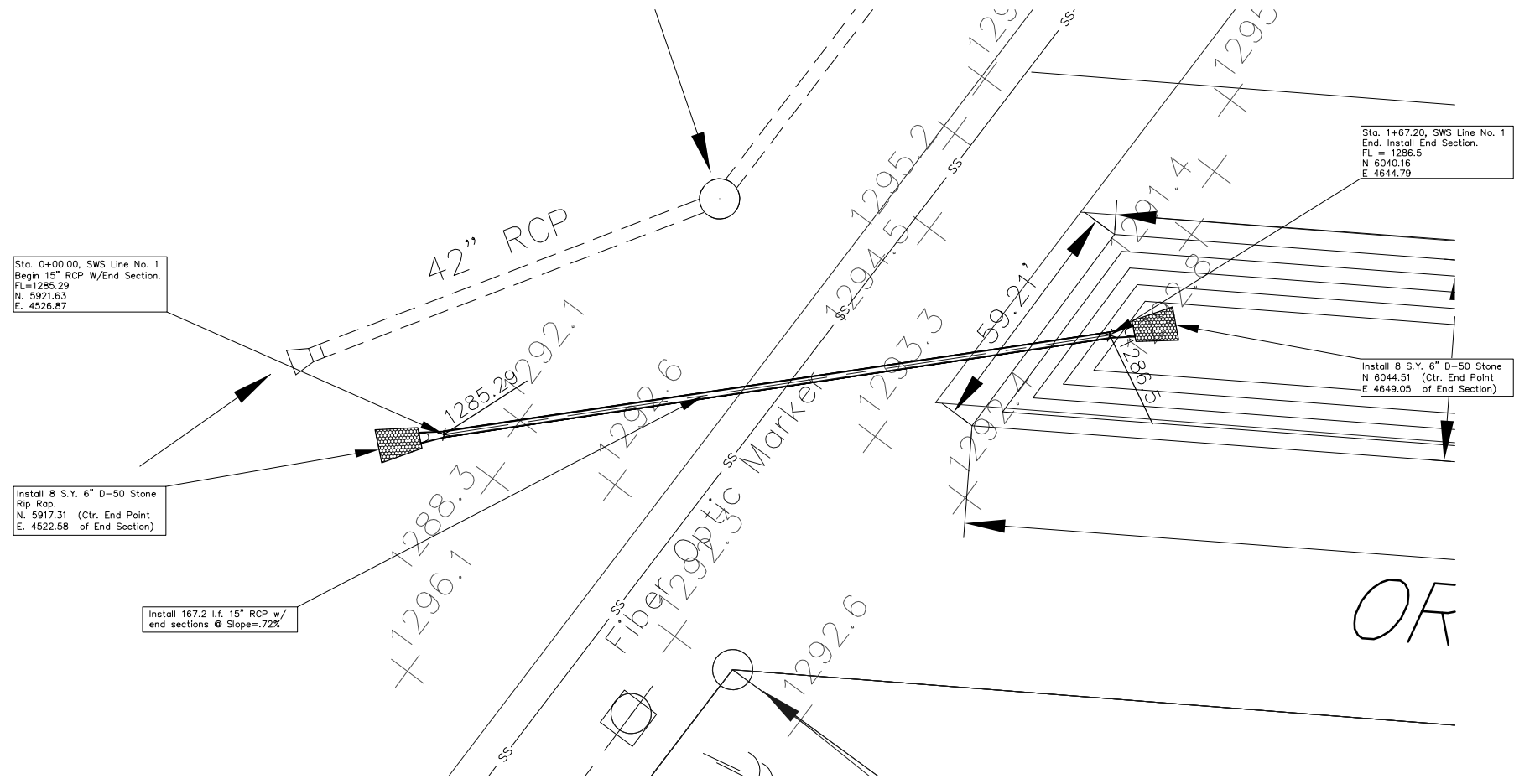
State of Kansas } ss. This is to certify that this
Sedgwick County } ss. This is to certify that this
plat was filed for record in the office of the
Register of Deeds this 8th day of August
1933, at 8:45 o'clock, A. M., and is duly re-
corded.

C. L. Anderson Register of Deeds
Harry A. Johnson Deputy

20046
20046

Restrictions M-307-P-600
8000-1st & N 4th P 294

SOUTHWEST INDUSTRIAL ADDITION		
PLAT MAP		
WICHITA, SEDGWICK COUNTY, KANSAS		
PROJ. NO.: 20071514		
CERTIFIED ENGINEERING DESIGN, P.A.		
810 WEST DOUGLAS, SUITE C		
WICHITA, KANSAS 67203		
PH. (316) 262-8808 FAX. (316) 262-1669		
DESIGNED: HDF	SCALE: 1" = 100'	SHEET
DRAWN: CC	DATE: MAY 2009	2
CHECKED: HDF	CED FILE: 070040T.dwg	TOTAL 3



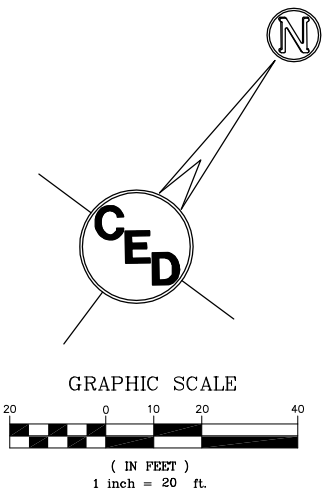
Sta. 0+00.00, SWS Line No. 1
Begin 15" RCP W/End Section.
FL=1285.29
N. 5921.63
E. 4526.87

Install 8 S.Y. 6" D-50 Stone
Rip Rap.
N. 5917.31 (Ctr. End Point
E. 4522.58 of End Section)

Install 167.2 L.F. 15" RCP w/
end sections @ Slope=.72%

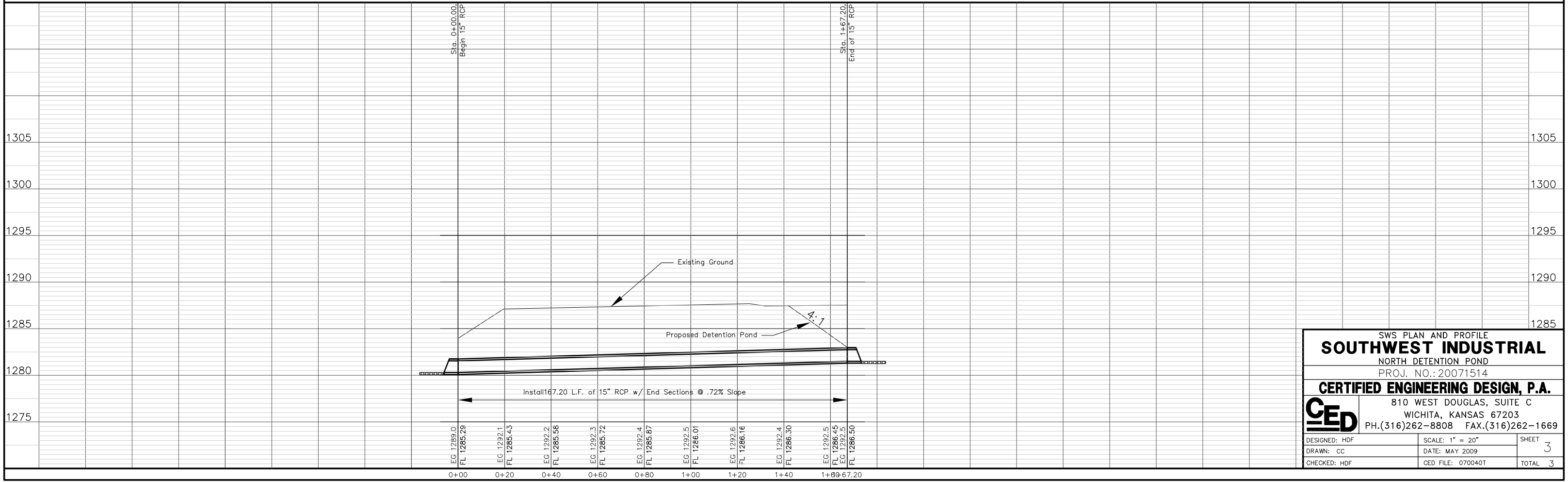
Sta. 1+67.20, SWS Line No. 1
End. Install End Section.
FL = 1286.5
N 6040.16
E 4644.79

Install 8 S.Y. 6" D-50 Stone
N 6044.51 (Ctr. End Point
E 4649.05 of End Section)



- W = WATER MAIN
- SWS = STORM WATER SEWER
- UGT = UNDER GROUND TELEPHONE
- UGFO = UNDER GROUND FIBER OPTIC
- C.O. CLEAN OUT
- CATV CABLE TELEVISION PEDESTAL
- F.H. FIRE HYDRANT
- ICV IRRIGATION CONTROL VALVE
- L.P. LIGHT POLE
- SIGN
- W.V. WATER VALVE
- XFMR ELECTRIC TRANSFORMER
- SWS M.H. STORM WATER SEWER MANHOLE
- FO M.H. FIBER OPTIC MANHOLE

UTILITIES SHOWN REPRESENT THE BEST INFORMATION AVAILABLE FOR DESIGN. ADDITIONAL UTILITIES MAY BE PRESENT ON THIS PROJECT. THE CONTRACTOR SHALL BE RESPONSIBLE FOR DETERMINING THE EXACT LOCATION, DEPTH AND SIZE OF ALL UNDERGROUND UTILITIES PRIOR TO CONSTRUCTION. THE CONTRACTOR SHALL BE LIABLE FOR ANY DAMAGE CAUSED BY THE FAILURE TO DO SO.



SWS PLAN AND PROFILE
SOUTHWEST INDUSTRIAL
NORTH DETENTION POND
PROJ. NO.: 20071514

CERTIFIED ENGINEERING DESIGN, P.A.
810 WEST DOUGLAS, SUITE C
WICHITA, KANSAS 67203
PH.(316)262-8808 FAX.(316)262-1669

DESIGNED: HDF	SCALE: 1" = 20"	SHEET 3
DRAWN: CC	DATE: MAY 2009	TOTAL 3
CHECKED: HDF	CED FILE: 070040T	