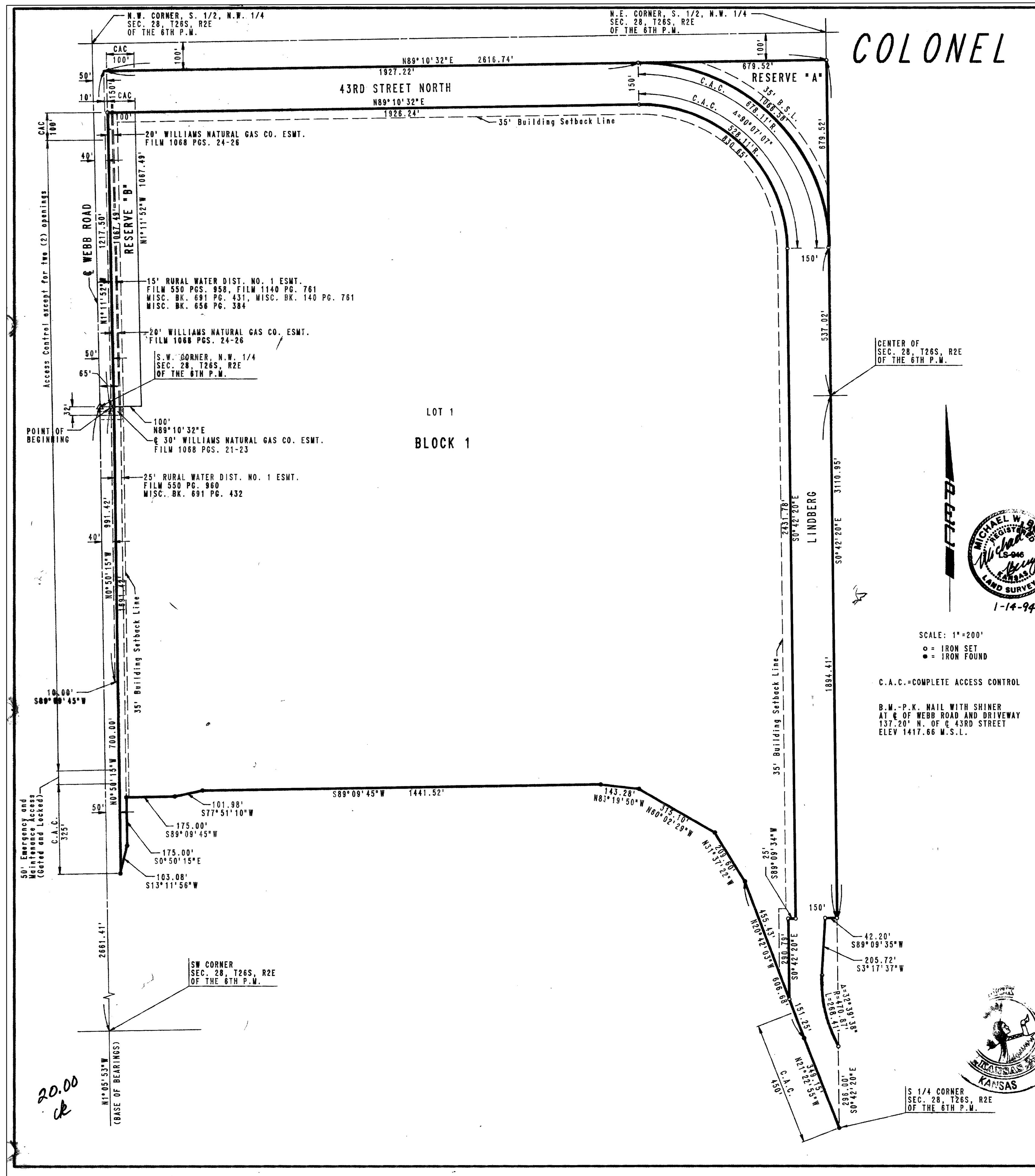


COLONEL JAMES JABARA AIRPORT 2ND ADDITION TO WICHITA, SEDGWICK COUNTY, KANSAS



STATE OF KANSAS)
) SS
COUNTY OF SEDGWICK)

STATE OF KANSAS)
) SS
COUNTY OF SEDGWICK)

I, MICHAEL W. BERRY, A REGISTERED LAND SURVEYOR IN AFORESAID STATE AND COUNTY, DO HEREBY CERTIFY THAT ON THIS 14th DAY OF January, 1994, I HAVE CAUSED TO BE SURVEYED AND PLATTED COLONEL JAMES JABARA AIRPORT 2ND ADDITION, TO WICHITA, SEDGWICK COUNTY, KANSAS, INTO A BLOCK, A LOT, STREETS AND RESERVES THE SAME BEING: THE SOUTH 1/2 OF THE NW 1/4 OF SECTION 28, TOWNSHIP 26 SOUTH, RANGE 2 EAST OF THE 6TH P.M. EXCEPT THE NORTH 100 FEET, AND EXCEPT THE WEST 40 FEET FOR ROAD PURPOSES, TOGETHER WITH THE S.W. 1/4 OF SAID SECTION 28, EXCEPT THAT PART PLATTED AS LOT 1, BLOCK A, COLONEL JAMES JABARA AIRPORT ADDITION TO WICHITA, SEDGWICK COUNTY, KANSAS, AND EXCEPT PART OF SBS INDUSTRIAL ADDITION, SEDGWICK COUNTY, KANSAS, AND EXCEPT THE WEST 40 FEET FOR ROAD PURPOSES. MORE PARTICULARLY DESCRIBED AS:
COMMENCING AT THE S.W. CORNER OF THE N.W. 1/4 OF SECTION 28, TOWNSHIP 26 SOUTH, RANGE 2 EAST OF THE 6TH P.M.; THENCE BEARING N89°09'18"E ALONG THE SOUTH LINE OF SAID N.W. 1/4 A DISTANCE OF 40.00 TO THE POINT OF BEGINNING THENCE BEARING N1°11'52"W PARALLEL TO AND 40.00 FEET EAST OF THE WEST LINE OF SAID N.W. 1/4 A DISTANCE OF 1217.50 FEET; THENCE BEARING N89°10'32"E PARALLEL TO AND 100.00 FEET SOUTH OF THE NORTH LINE OF THE SOUTH 1/2 OF SAID N.W. 1/4 A DISTANCE OF 2616.74 FEET TO A POINT IN THE EAST LINE OF SAID N.W. 1/4; THENCE BEARING S0°42'20"E ALONG SAID EAST LINE AND ALSO ALONG THE EAST LINE OF THE S.W. 1/4 OF SAID SECTION 28 A DISTANCE OF 3110.95 FEET TO A POINT IN THE NORTH LINE OF LOT 1, BLOCK A, SBS INDUSTRIAL ADDITION, SEDGWICK COUNTY, KANSAS; THENCE ALONG SAID NORTH LINE BEARING S89°09'35"W A DISTANCE OF 42.20 FEET; THENCE BEARING S3°17'37"W A DISTANCE OF 205.72 FEET TO THE P.C. OF A CURVE TO THE LEFT HAVING A RADIUS OF 470.87 FEET; THENCE ALONG SAID CURVE THROUGH A CENTRAL ANGLE OF 32°39'38" AN ARC DISTANCE OF 288.41 FEET TO A POINT IN THE EAST LINE OF THE S.W. 1/4 OF SAID SECTION 28 SAID POINT ALSO BEING ON A CURVE IN THE WESTERLY LINE OF LOT 1, BLOCK A, SBS INDUSTRIAL ADDITION; THENCE BEARING S0°42'20"E ALONG THE EAST LINE OF SAID S.W. 1/4 A DISTANCE OF 296.00 FEET TO THE S.E. CORNER OF THE S.W. 1/4 OF SAID SECTION 28; THENCE BEARING N2°12'58"W ALONG THE NORTHEASTERLY LINE OF LOT 1, BLOCK A IN SAID COLONEL JAMES JABARA AIRPORT ADDITION A DISTANCE OF 349.15 FEET; THENCE BEARING N2°04'03"W ALONG SAID LINE A DISTANCE OF 606.68 FEET; THENCE CONTINUING ALONG SAID LINE BEARING N31°37'22"W A DISTANCE OF 209.60 FEET; THENCE BEARING N60°02'29"W ALONG SAID LINE A DISTANCE OF 315.10 FEET; THENCE BEARING N83°19'50"W ALONG THE NORTH LINE OF SAID LOT 1, A DISTANCE OF 143.28 FEET; THENCE CONTINUING ON SAID LINE BEARING S89°09'45"W A DISTANCE OF 1441.52 FEET; THENCE BEARING S77°51'10"W A DISTANCE OF 101.98 FEET; THENCE BEARING S89°09'45"W A DISTANCE OF 175.00 FEET TO THE N.W. CORNER OF SAID LOT 1; THENCE BEARING S0°50'15"E A DISTANCE OF 175.00 FEET; THENCE BEARING S13°11'56"W A DISTANCE OF 103.08 FEET; THENCE BEARING N0°50'15"W PARALLEL TO AND 50.00 FEET EAST OF THE WEST LINE OF SAID S.W. 1/4 A DISTANCE OF 700.00 FEET; THENCE BEARING S89°09'45"W A DISTANCE OF 10.00 FEET; THENCE BEARING N0°50'15"W A DISTANCE OF 981.42 FEET TO THE POINT OF BEGINNING.

ALL PORTIONS OF LINDBERG, 39TH STREET NORTH, WEBB ROAD, AND SBS INDUSTRIAL ADDITION WITHIN THE ABOVE DESCRIBED TRACT ARE HEREBY VACATED AND REPLATTED BY VIRTUE OF K.S.A. 12-512(b) AMENDED.
Michael W. Berry
MICHAEL W. BERRY, R.L.S. 09946

KNOW ALL MEN BY THESE PRESENTS THAT WE, THE UNDERSIGNED PROPERTY OWNERS OF THE LAND AS ABOVE SET FORTH IN THE SURVEYOR'S CERTIFICATE, HAVE CAUSED THE LAND TO BE SURVEYED AND PLATTED INTO LOTS, A BLOCK, A RESERVE AND STREETS, THE SAME TO BE KNOWN AS COLONEL JAMES JABARA AIRPORT 2ND ADDITION, TO WICHITA, SEDGWICK COUNTY, KANSAS. THE STREETS ARE HEREBY DEDICATED TO AND FOR THE USE OF THE PUBLIC.

ALL ABUTTERS' RIGHTS OF ACCESS TO AND FROM WEBB ROAD OVER & ACROSS THE WEST LINE OF BLOCK 1 ARE HEREBY GRANTED TO THE CITY OF WICHITA, KANSAS; PROVIDED HOWEVER THAT LOT 1, BLOCK 1 SHALL HAVE ACCESS TO WEBB ROAD AT TWO (2) LOCATIONS TO BE DESIGNATED BY THE CITY ENGINEER OF WICHITA KANSAS, TOGETHER WITH A 50 FOOT EMERGENCY AND MAINTENANCE ACCESS AS SHOWN.

ALL ABUTTERS' RIGHTS OF ACCESS TO AND FROM 43RD STREET NORTH AND LINDBERG AS SHOWN ARE HEREBY GRANTED TO THE CITY OF WICHITA.
RESERVE "A" IS HEREBY PLATTED FOR AIRPORT RELATED USES. RESERVE "B" IS HEREBY PLATTED FOR OPEN SPACE PURPOSES. RESERVE "A" AND "B" SHALL BE OWNED AND MAINTAINED BY THE WICHITA AIRPORT AUTHORITY.

OWNERS: THE WICHITA AIRPORT AUTHORITY #1363377
BY Jerry James PRESIDENT
Judye N. Mohring AIRPORT CLERK
JUDYE N. MORHRING

BOARD OF COUNTY COMMISSIONERS OF SEDGWICK COUNTY, KANSAS.
Betsy Gwin CHAIR
BETSY GWIN
Susan E. Crockett-Spoon COUNTY CLERK
SUSAN E. CROCKETT-SPOON

STATE OF KANSAS)
) SS
COUNTY OF SEDGWICK)

BE IT REMEMBERED THAT ON THIS 14th DAY OF January, 1994, BEFORE ME, A NOTARY PUBLIC IN AFORESAID STATE AND COUNTY, CAME JERRY JAMES, PRESIDENT AND JUDYE N. MORHRING, AIRPORT CLERK OF THE WICHITA AIRPORT AUTHORITY IN WICHITA, KANSAS, TO ME PERSONALLY KNOWN TO BE THE SAME PERSONS WHO EXECUTED THE FOREGOING INSTRUMENT OF WRITING AND DULY ACKNOWLEDGED THE EXECUTION OF SAME FOR AND ON BEHALF AND AS THE VOLUNTARY ACT AND DEED OF SAID AIRPORT AUTHORITY. IN TESTIMONY WHEREOF I HAVE HEREUNTO SET MY HAND AND AFFIXED MY NOTARIAL SEAL THE DAY AND YEAR ABOVE WRITTEN.

Gary L. Wile NOTARY PUBLIC
GARY L. WILEY
MY APPOINTMENT EXPIRES Jan 15, 1997

STATE OF KANSAS)
) SS
COUNTY OF SEDGWICK)

BE IT REMEMBERED THAT OF THIS 2nd DAY OF January, 1994, BEFORE ME, A NOTARY PUBLIC IN AFORESAID STATE AND COUNTY, CAME BETSY GWIN, CHAIR OF THE BOARD OF COUNTY COMMISSIONERS OF SEDGWICK COUNTY, KANSAS, AND SUSAN E. CROCKETT-SPOON, SEDGWICK COUNTY CLERK, TO ME PERSONALLY KNOWN TO BE THE SAME PERSONS WHO EXECUTED THAT FOREGOING INSTRUMENT OF WRITING AND DULY ACKNOWLEDGED THE EXECUTION OF SAME FOR AND ON BEHALF AND AS THE VOLUNTARY ACT AND DEED OF SAID BOARD. IN TESTIMONY WHEREOF I HAVE HEREUNTO SET MY HAND AND AFFIXED MY NOTARIAL SEAL THE DAY AND YEAR ABOVE WRITTEN.

Gary L. Wile NOTARY PUBLIC
GARY L. WILEY
MY APPOINTMENT EXPIRES Jan 15, 1997

THIS PLAT HAS BEEN SUBMITTED TO AND APPROVED BY THE WICHITA-SEDGWICK COUNTY METROPOLITAN AREA PLANNING COMMISSION, WICHITA, KANSAS, DATED THIS 27TH DAY OF AUGUST, 1992.

James D. Winer CHAIRMAN
JAMES D. WINER
Marvin S. Kroot SECRETARY
MARVIN S. KROOT

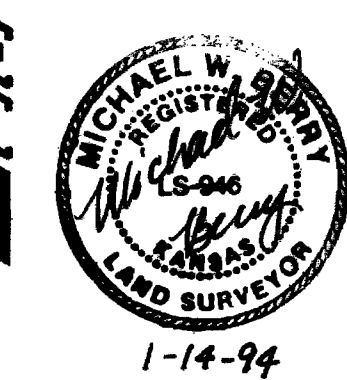
THIS PLAT APPROVED AND ALL DEDICATIONS SHOWN HEREON ARE ACCEPTED BY THE CITY COUNCIL OF THE CITY OF WICHITA, KANSAS, DATED THIS 2nd DAY OF January, 1994.

Elma Broadfoot MAYOR
ELMA BROADFOOT
Pat Burnett DEPUTY CITY CLERK
PAT BURNETT

ENTERED ON TRANSFER RECORD THIS 2nd DAY OF March, 1994.
Susan E. Crockett-Spoon COUNTY CLERK
SUSAN E. CROCKETT-SPOON

THIS IS TO CERTIFY THAT THIS INSTRUMENT WAS FILED FOR RECORD IN THE REGISTER OF DEEDS OFFICE AT 8:00 A.M., ON THIS 3RD DAY OF MARCH, 1994.

Pat Kettler REGISTER OF DEEDS
PAT KETTLER
Ed Resa DEPUTY
ED RESA



SCALE: 1"=200'
○ = IRON SET
● = IRON FOUND

C.A.C. = COMPLETE ACCESS CONTROL
B.M. = P.K. NAIL WITH SHINER
AT E OF WEBB ROAD AND DRIVEWAY
137.20' N. OF C 43RD STREET
ELEV 1417.66 M.S.L.

