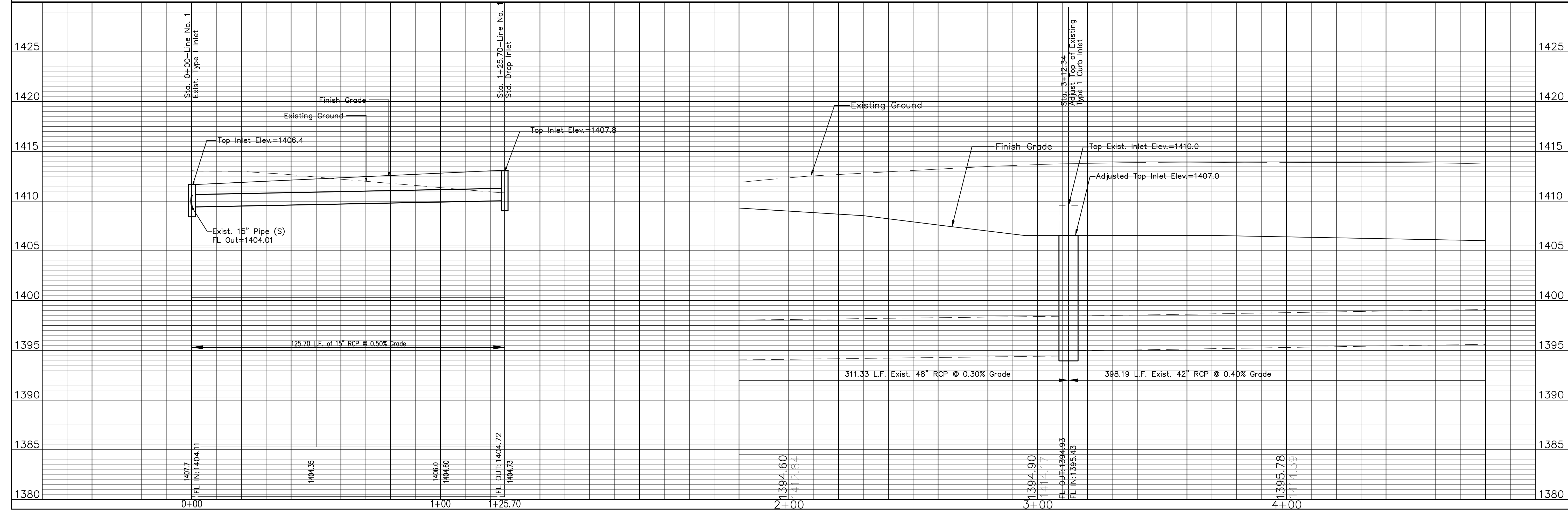


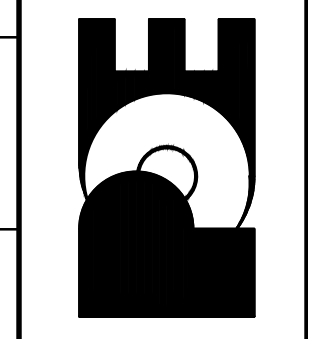
LINE NO. 1

LINE NO. 2-R1



COL. JAMES JAGARA AIRPORT-AVIATION CAMPUS
STREET & STORM SEWER IMPROVEMENTS
STORM SEWER LINE NO. 1
CITY OF WICHITA, KANSAS
JAMES L. ARQUIR, P.E. - CITY ENGINEER
1980 PPS (607861)

POE & ASSOCIATES, INC.
CONSULTING ENGINEERS
5940 E. Central, Suite 200 ■ Wichita, KS 67208-4242
Phone: 316/685-4114 ■ FAX: 316/685-4444



REV. 5/21/09
Designed By: Tim Austin
Drawn By: S. Schmidt
Poe Job No.: 1873
Date: February 2009
Sheet 2 of 14