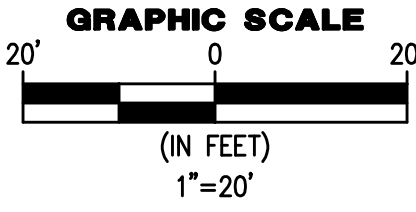
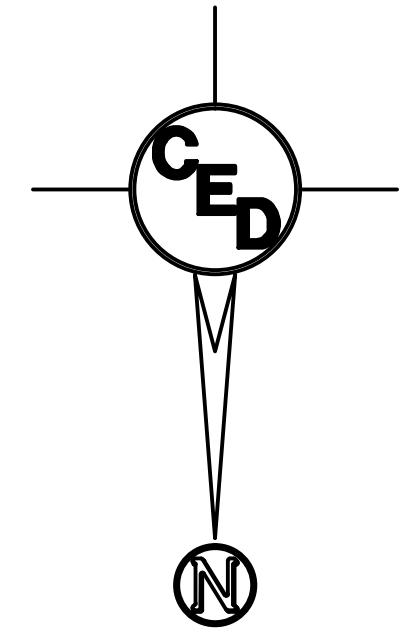
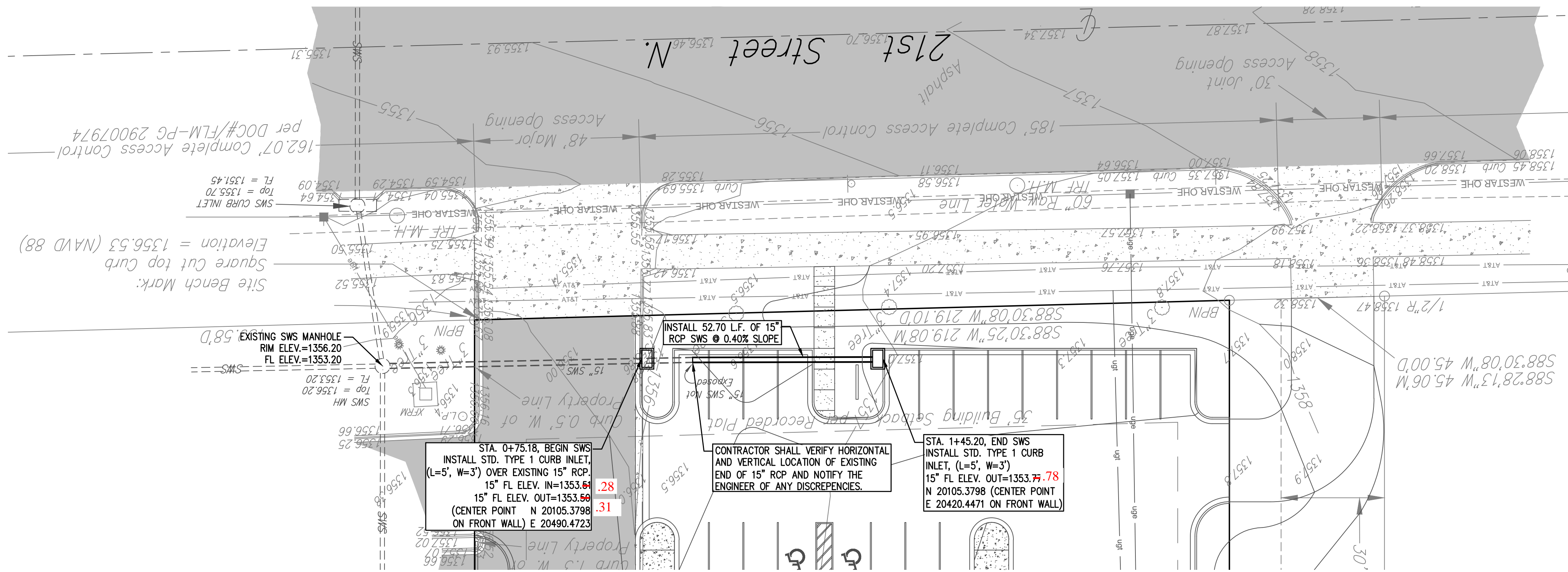




KS: 1-800-344-7233
WICHITA: 316-987-2470



- LEGEND**
- G = GAS MAIN
 - W = WATER MAIN
 - SS = SANITARY SEWER
 - OHE = OVERHEAD ELECTRIC
 - SWS = STORM WATER SEWER
 - UGE = UNDER GROUND ELECTRIC
 - UGT = UNDER GROUND TELEPHONE
- TELE. PED TELEPHONE PEDESTAL
 - E.B. ELECTRIC BOX
 - G.M. GAS METER
 - W.M. WATER METER
 - W.V. WATER VALVE
 - F.H. FIRE HYDRANT
 - M.W. MONITOR WELL
 - C.O. CLEAN OUT
 - L.P. LIGHT POLE
 - P.P. POWER POLE
 - S. SIGN
 - SWS M.H. STORM WATER SEWER MANHOLE
 - SS M.H. SANITARY SEWER MANHOLE
 - XFRM ELECTRIC TRANSFORMER

Site Bench Mark:
Square Cut "1" top Curb at the SE Corner of Captioned Property
Being 311.5' West of the S.E. Corner Lot 2, Block 1, Aberdeen
Commercial Addition Elevation = 1356.53 (NAVD 88)

REV.	DESCRIPTION	DATE

CREDIT UNION OF AMERICA

11810 WEST 21ST STREET NORTH

CERTIFIED ENGINEERING DESIGN, P.A.
CIVIL ENGINEERING SERVICES

1935 WEST MAPLE STREET
WICHITA, KANSAS 67213
PH.(316)262-8808 FAX.(316)262-1669

ISSUED FOR CONSTRUCTION

PROJECT NO.: 20101867
ISSUE DATE:
CONTACT: C. WINKLER / H. FORAKER
CHECKED BY:

SWS PLAN & PROFILE

4 OF 5

