

2002 CONTRACT MAINTENANCE PEDESTRIAN BRIDGE REPLACEMENT

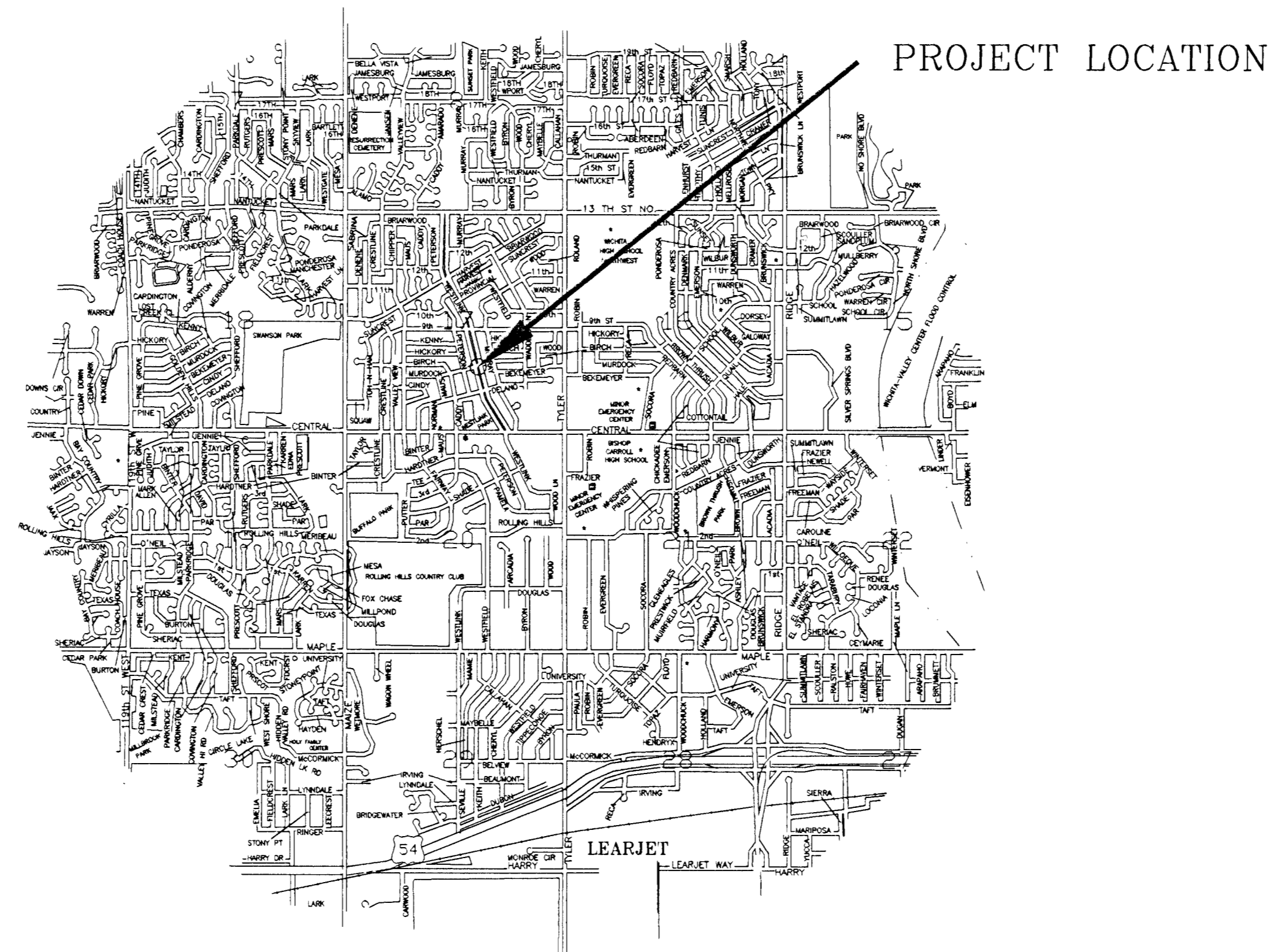
**54 FT. PEDESTRIAN BRIDGE AT MURDOCK AVE. AND WESTLINK AVE.
OVER THE WESTLINK TRIBUTARY TO COWSKIN CREEK**

PROJ. NO. 472-83473

OCA NO. 132712

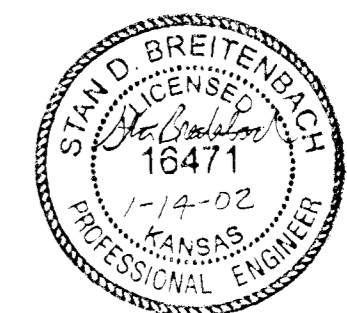
CITY OF WICHITA, KANSAS

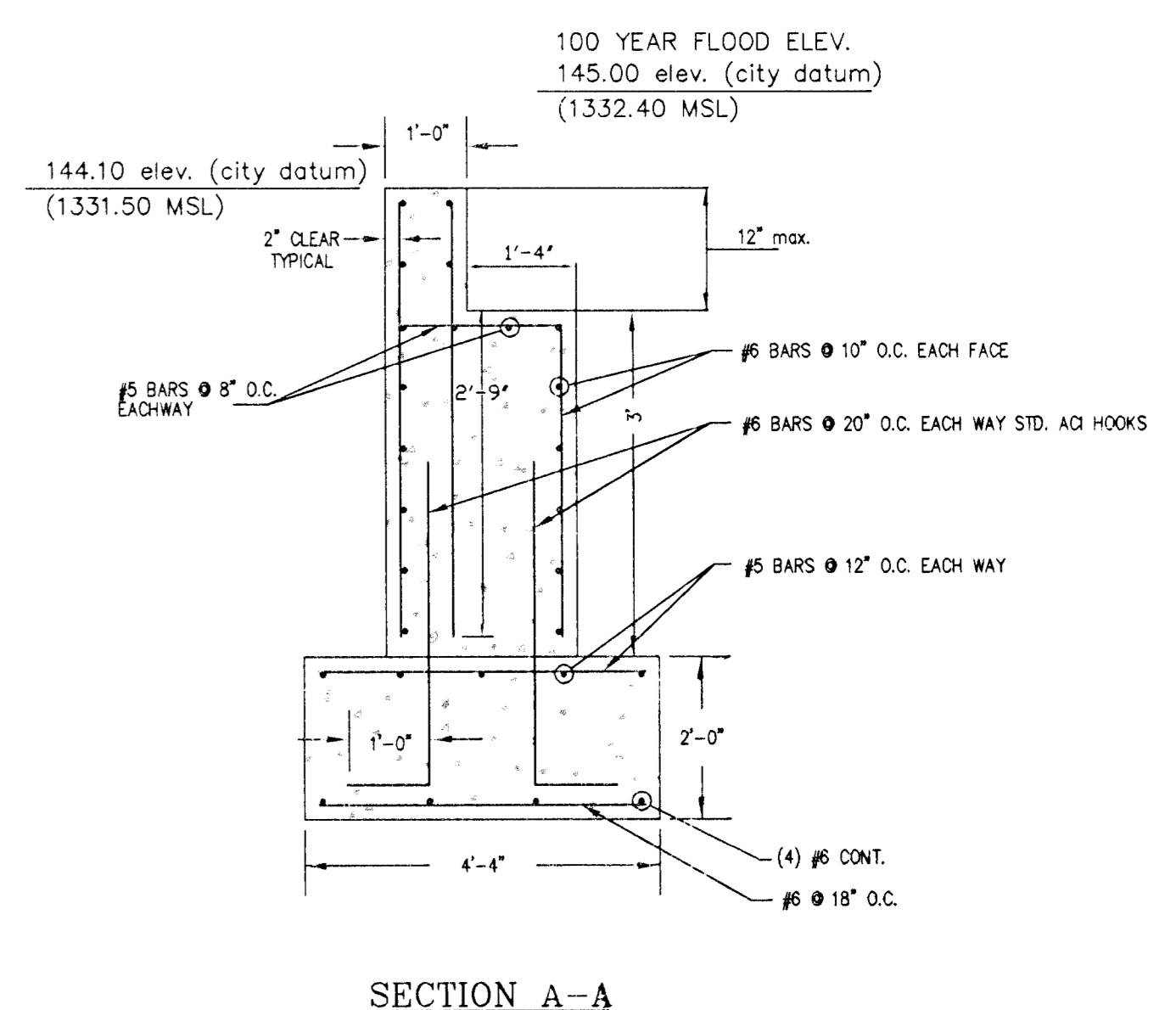
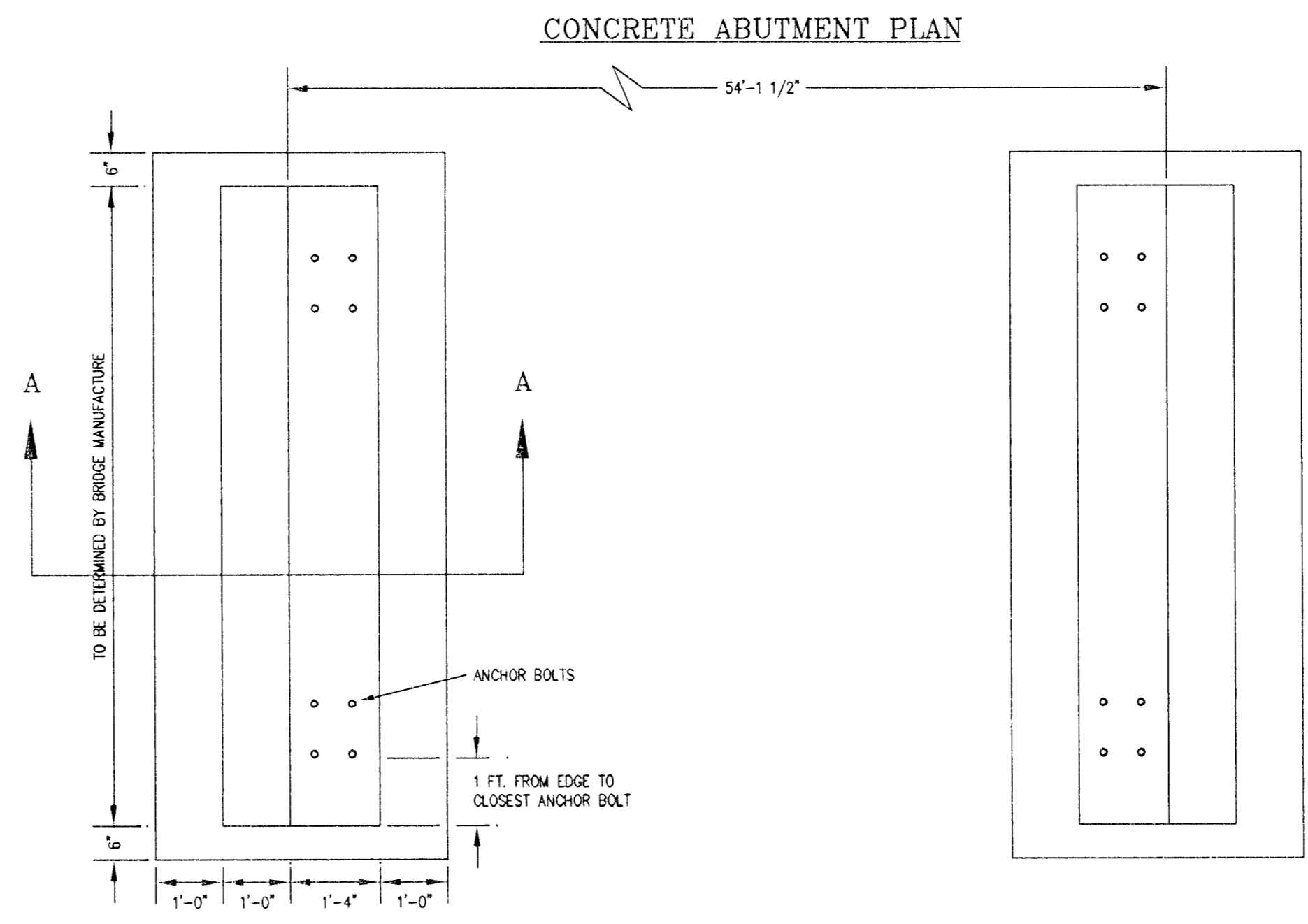
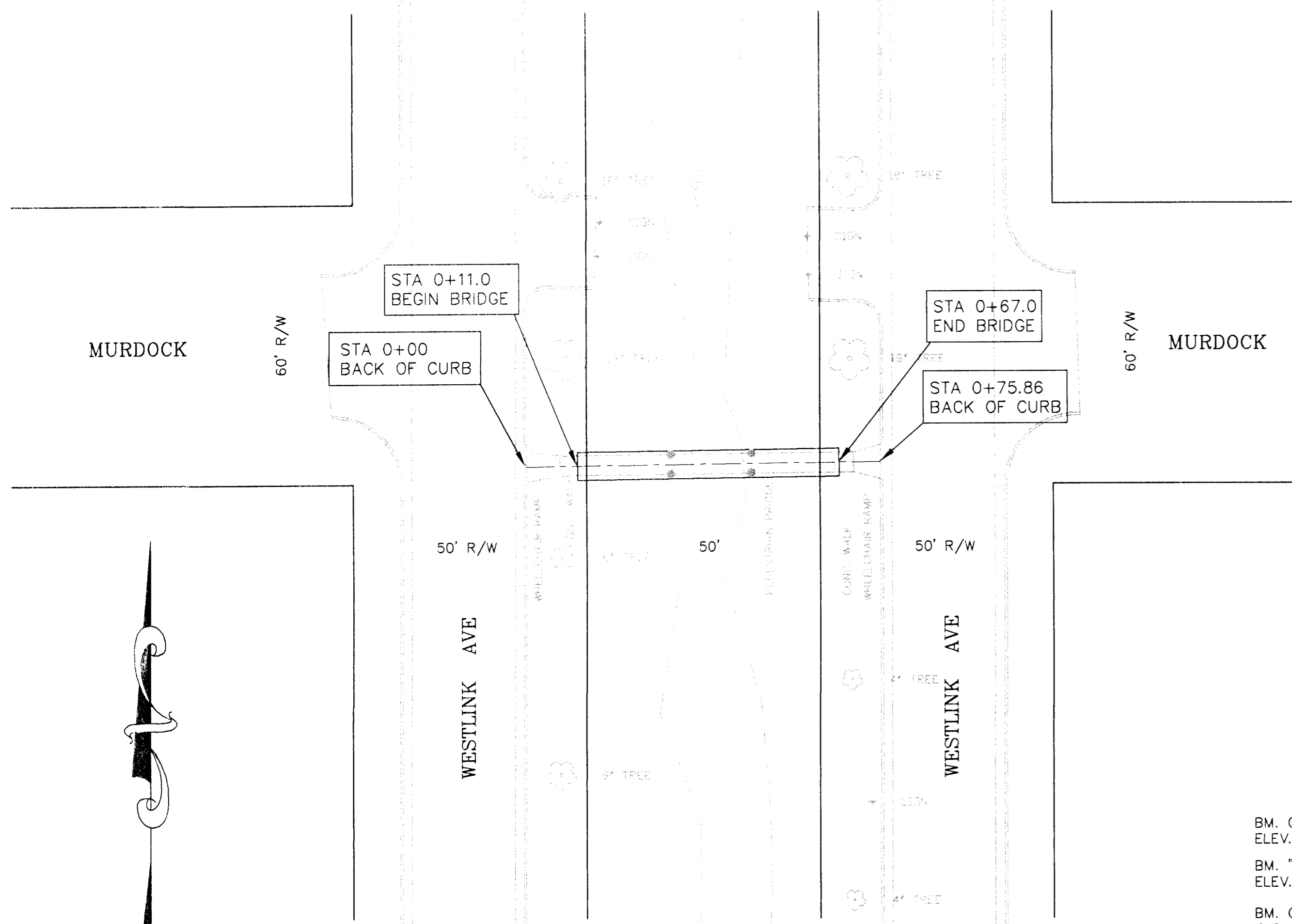
M. E. LINDEBAK, P.E. - CITY ENGINEER



INDEX:

- SHEET 1 TITLE SHEET
- SHEET 2 54 FT. PEDESTRIAN BRIDGE AT MURDOCK AVE. AND WESTLINK AVE. OVER THE WESTLINK TRIBUTARY TO COWSKIN CREEK





BM. CITY STD. DISC AT WESTLINK AND 9TH ST. NO., NORTHEAST CORNER OF BRIDGE, NORTH FACE OF SIDEWALK.
 ELEV. 146.49 CITY DATUM (1333.89 MSL)

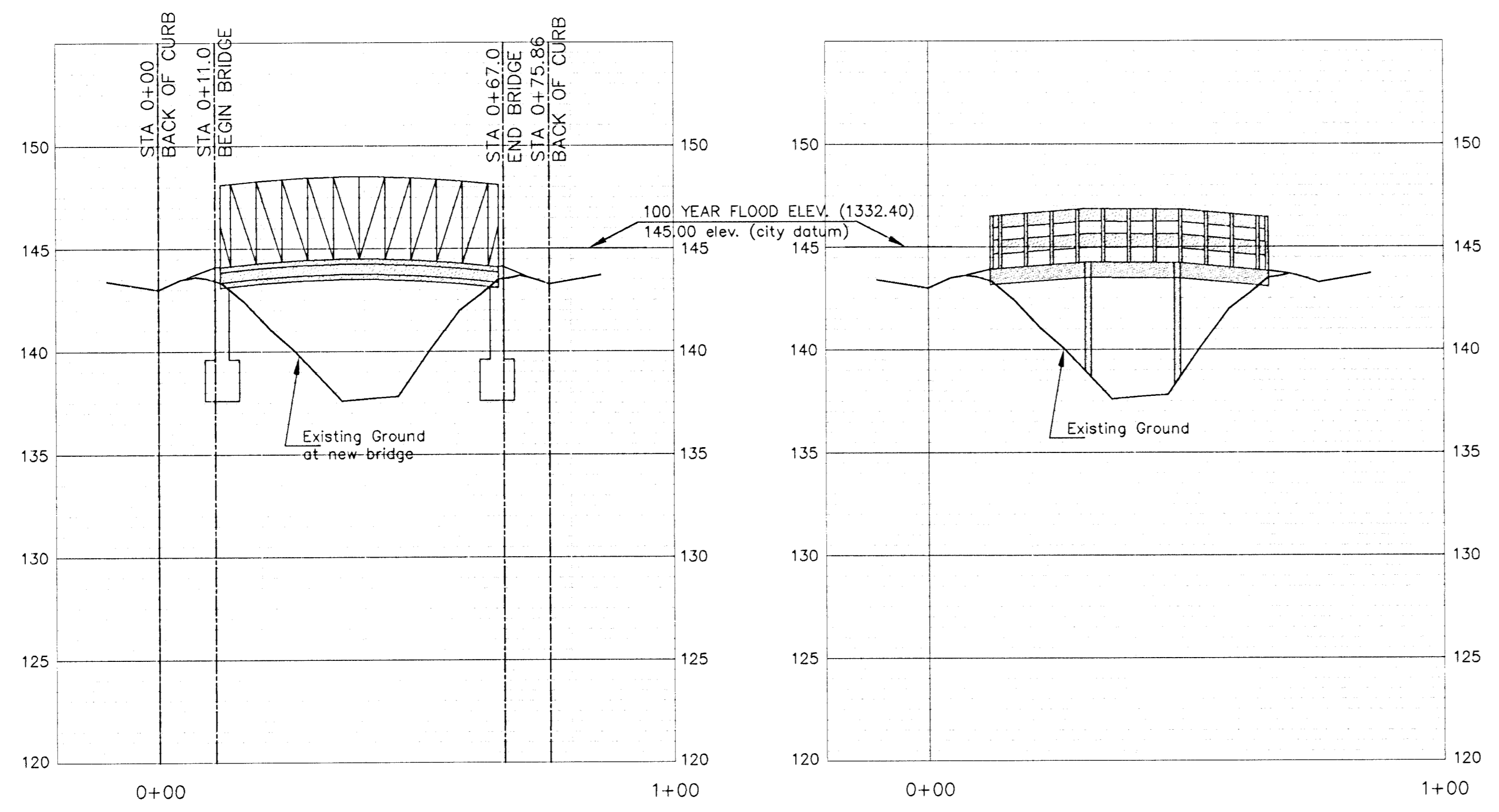
BM. "□" TOP OF CURB AT SOUTH END OF RETURN AT SOUTHEAST CORNER OF MURDOCK AND WESTLINK.
 ELEV. 143.86 CITY DATUM (1331.26 MSL)

BM. CITY STD. DISC AT WESTLINK AND DELANO. NORTHEAST CORNER OF BRIDGE, NORTH FACE OF SIDEWALK.
 ELEV. 144.46 CITY DATUM (1331.86 MSL)

SCALE: PLAN 1" = 20'
 PROFILE 1" = 20' HORIZ.
 1" = 5' VERT.

NEW 54 FT. PEDESTRIAN BRIDGE

EXISTING PEDESTRIAN BRIDGE



<p>THE CITY OF WICHITA</p> <p>CITY ENGINEER'S OFFICE CITY HALL - SEVENTH FLOOR 452 NORTH MAIN STREET WICHITA, KANSAS 67202 (316) 268-4501 (316) 268-4114 FAX</p>	<p>54 ft. PEDESTRIAN BRIDGE AT MURDOCK AVE. AND WESTLINK AVE.</p>		
	<p>M. E. LINDEBAK P.E. - CITY ENGINEER</p>		
	<p>ENGINEER: S. BREITENBACH</p>	<p>DRAWN BY: R. LOOMIS</p>	
	<p>PROJECT NUMBER 472-83473</p>	<p>INDEX CODE 132712</p>	
<p>DATE JAN. 2002</p>	<p>SHEET 2 OF 2</p>		