

STATE OF KANSAS  
DEPARTMENT OF TRANSPORTATION

STATE	PROJECT NO.	YEAR	SHEET NO.	TOTAL SHEETS
KANSAS	472-84004	2005	1	215

INDEX OF SHEETS

- PART A:
1. Title Sheet
  - 2.-5. Typical Sections
  - 6.-20. Greenwich Road Plan
  21. 21st St. Plan
  - 22.-29. Coordinate Geometry Plan
  - 30.-32. Curve Stake Out Tables
  - 33.-56. Stormwater Sewer Plan & Profile
  - 57.-67. Intersection Details
  68. Concrete Pavement
  69. Contraction Joint Dowel Assemblies
  70. Curb, Gutter and Combined Curb and Gutter
  - 71.-72. Valley Gutter / Entrance Details
  73. Wheelchair Ramp Details
  74. Sidewalks and Steps
  75. Std. Type 1 Curb Inlet (L=10')
  76. Std. Type 1 Curb Inlet (L=15')
  77. Inlet, Type 22 (Special)
  78. Inlet-Manhole (Special)
  79. Reinforced Concrete Manhole
  80. Manhole Adjustment Detail
  81. Special Inlet Details
  82. Concrete End Sections (RCP)
  83. Concrete End Sections (RCPHE)
  - 84.-86. Concrete Safety Barrier
  - 87.-88. K-96 Bridge - Rip Rap and Retaining Wall
  - 89.-100. RCB Details
  - 101.-106. Bridge No. 530400870WDFM30
  107. Typical Culvert Extensions
  108. RCB Auxiliary Details
  109. Precast Concrete Box Culvert Details
  110. Bridge Excavation
  111. Supports and Spacers for Reinforcing Steel
  112. Concrete Rip Rap
  - 113.-114. Summary of Quantities
  - 115.-118. Erosion Control - BMP's
  - 119.-134. Landscape Plans
  - 135.-140. Traffic Signal Plan and Quantities - 21st Street
  - 141.-149. Signing & Marking Plans
  150. Traffic Handling and Construction Sequence
  - 151.-163. Traffic Control Plans
  164. Drainage Map
  - 165.-215. Cross Sections
- PART B: (NON-PARTICIPATING)
- B1.-B16. Water Supply Line

GENERAL NOTES

ALL CONSTRUCTION WORK AND MATERIAL IN THIS PROJECT SHALL COMPLY WITH CITY OF WICHITA STANDARD SPECIFICATIONS FOR THE CONSTRUCTION OF CITY PROJECTS UNLESS OTHERWISE NOTED IN THE PLANS OR SPECIAL PROVISIONS.

UNDERGROUND UTILITY SERVICE LINES AND OVERHEAD UTILITY POLE LINES ARE TO BE ADJUSTED AS NECESSARY BY OTHERS PRIOR TO CONSTRUCTION UNLESS THE PLANS SPECIFICALLY CALL FOR THEIR ADJUSTMENT BY THE CONTRACTOR. EXISTING UTILITIES AND THEIR LOCATION AS SHOWN ON THE PLANS, REPRESENT THE BEST INFORMATION OBTAINABLE FOR DESIGN. LOCATION INFORMATION HAS BEEN OBTAINED FROM THE VARIOUS UTILITY COMPANIES AND IS EITHER FROM COMPANY RECORD DRAWINGS OR COMPANY PROVIDED FIELD LOCATIONS. THE CONTRACTOR WILL BE REQUIRED TO WORK AROUND EXISTING UTILITIES WITHIN THE RIGHT-OF-WAY WHICH DO NOT CONFLICT WITH PROPOSED CONSTRUCTION.

TREES AND SHRUBS IN PUBLIC RIGHT-OF-WAY WHICH ARE IN DIRECT CONFLICT WITH PROPOSED NEW CONSTRUCTION SHALL BE REMOVED BY THE CONTRACTOR WITH THE ENGINEER'S APPROVAL. TREES AND SHRUBS WHICH ARE NOT IN DIRECT CONFLICT WITH PROPOSED NEW CONSTRUCTION SHALL BE SAVED AND PROTECTED FROM DAMAGE.

RUBBLE FROM THE REMOVAL OF MISCELLANEOUS STRUCTURES SHALL BE DISPOSED OF ON SITES TO BE PROVIDED BY THE CONTRACTOR AND APPROVED AS NOTED BELOW.

ALL DISPOSAL SITES MUST BE APPROVED BY THE KANSAS DEPARTMENT OF HEALTH AND ENVIRONMENT. MATERIAL EITHER STOCKPILED OR DISPOSED OF IN A FLOOD PLAIN WOULD REQUIRE A KANSAS STATE BOARD OF AGRICULTURE PERMIT. ANY MATERIAL DUMPED IN WATERS OF THE UNITED STATES OR WETLANDS IS SUBJECT TO U.S. CORPS OF ENGINEERS PERMITTING REGULATIONS. ANY MATERIAL BURIED OR STOCKPILED BEYOND APPROVED CONSTRUCTION LIMITS WOULD REQUIRE ADDITIONAL ARCHEOLOGICAL INVESTIGATIONS UNLESS BURIED IN A PREVIOUSLY APPROVED BORROW LOCATION.

CONTRACTOR SHALL SATISFY HIMSELF OF SURFACE AND SUBSURFACE CONDITIONS PRIOR TO BIDDING.

FIELD LOCATE ALL EXISTING UTILITIES PRIOR TO BEGINNING ANY EXCAVATION WORK. CONTACT THE KANSAS ONE-CALL SYSTEM AT 316-687-2470 AT LEAST 48 HOURS IN ADVANCE TO REQUEST FIELD LOCATES. FOR UTILITIES THAT ARE NOT MEMBERS OF THE KANSAS ONE-CALL SYSTEM, CONTACT THOSE COMPANIES DIRECTLY.

CONTRACTOR IS RESPONSIBLE FOR PRESERVING PROPERTY IRONS. RE-ESTABLISH ANY PROPERTY IRONS WHICH ARE DAMAGED OR DESTROYED BY CONSTRUCTION OPERATIONS, OR WHICH ARE COVERED BY 12" OR MORE OF FILL MATERIAL BY THIS PROJECT. SUCH IRONS SHALL BE RE-ESTABLISHED BY A LICENSED LAND SURVEYOR IN ACCORDANCE WITH STATE LAWS AND AT NO ADDITIONAL COST TO THE CITY.

THE WATER DEPARTMENT SHALL FIELD LOCATE WATER VALVES ONE TIME DURING CONSTRUCTION WHEN REQUESTED BY THE CONTRACTOR. IT SHALL BE THE CONTRACTOR'S RESPONSIBILITY TO PRESERVE SUCH FIELD LOCATIONS DURING THE CONSTRUCTION PROCESS. WATER VALVES, WATER VALVE BOXES OR FIRE HYDRANTS DAMAGED DURING CONSTRUCTION SHALL BE REPAIRED BY THE CONTRACTOR AT HIS OWN EXPENSE.

ADJUST WATER VALVES AND MANHOLES AS DIRECTED BY THE ENGINEER.

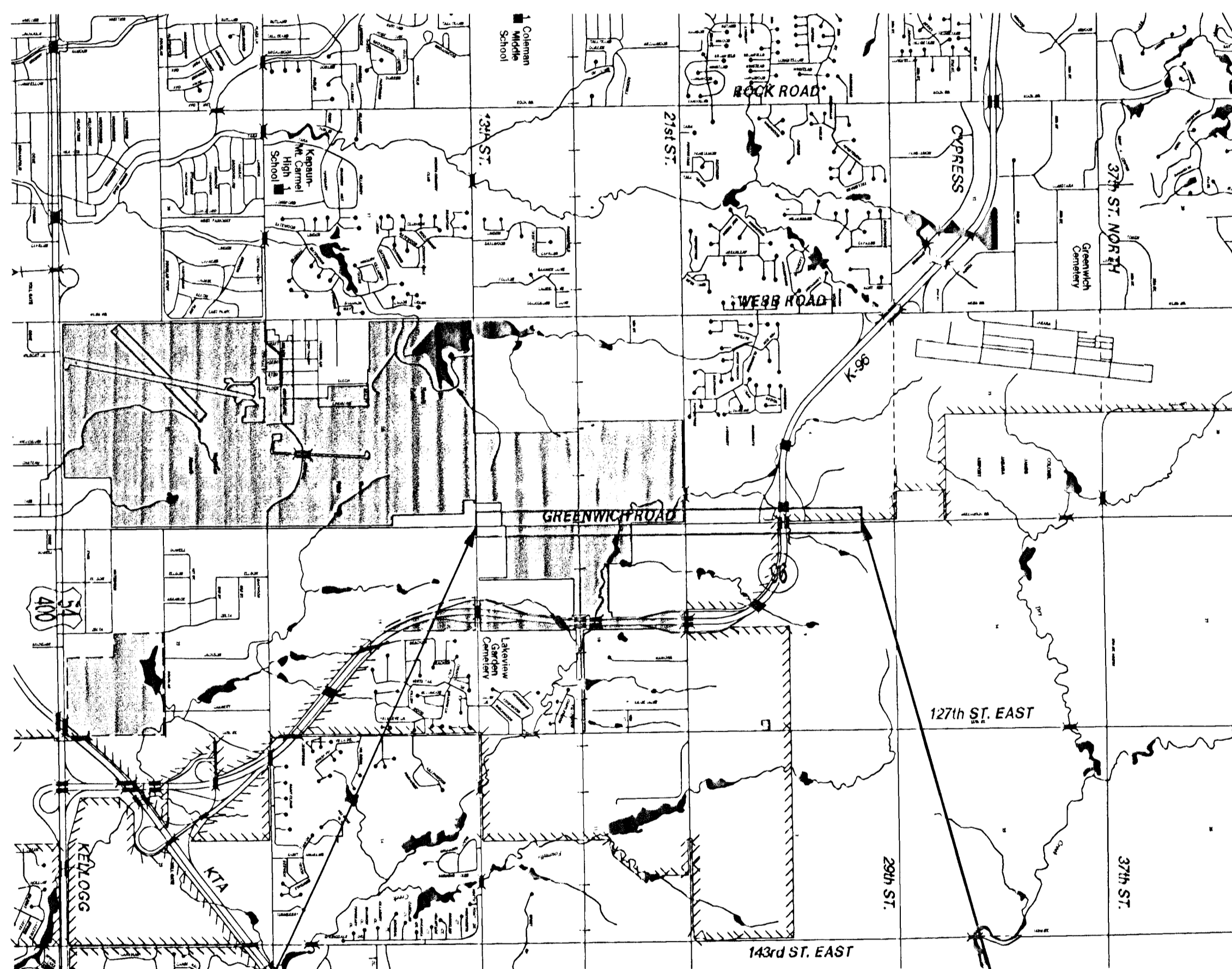
THE PLANS SHOW AN EARTHEN BERM TO BE CONSTRUCTED BY OTHERS FROM STA. 75+00 TO STA. 86+00 THIS WILL BE CONSTRUCTED BY THE SANITARY SEWER CONTRACTOR BEFORE THIS STREET PROJECT IS LET. SHAPE AND SEED THESE BERMS TO FIT WITH THE STREET CONSTRUCTION AS DIRECTED BY THE ENGINEER. PLACE SOME OF THE EXCESS EXCAVATION FROM THE PROJECT TO OBTAIN THE DESIRED FINAL SHAPE, AS DIRECTED BY THE ENGINEER. THE SHAPING IS CONSIDERED SUBSIDIARY TO THE EARTHWORK REQUIRED FOR THE PROJECT.

THE CONTRACTOR SHALL COORDINATE ROAD CONSTRUCTION WITH THE PROPOSED SANITARY SEWER PROJECT. ADJUST WATERVALVE BOXES IF NECESSARY TO MEET PROPOSED STREET GRADES.

PAVING/DRAINAGE DESIGNED UNDER CITY OF WICHITA PROJECT NO. 472-84004.

PLAN AND PROFILE OF PROPOSED  
GREENWICH ROAD FROM 13TH ST. NORTH TO 27TH ST. NORTH  
KDOT PROJECT NO. 87-N-0369-01  
PART A: CITY OF WICHITA PROJECT NO. 472-84274 O.C.A. NO. 706929  
FEDERAL AID PROJECT STP-N 036(901)  
PART B: CITY OF WICHITA PROJECT NO. 448-90066 O.C.A. NO. 735279  
(NON-PARTICIPATING)

SEDGWICK COUNTY



Sta. 48+70  
Begin Project

Sta. 139+80  
End Project

DESIGN DESIGNATION

AADT (2005)	6,600
AADT (2030)	20,000
DHV (10%)	2,000
D	60%
T	3%
V	40 MPH
C of A	Existing
Clear Zone	6'

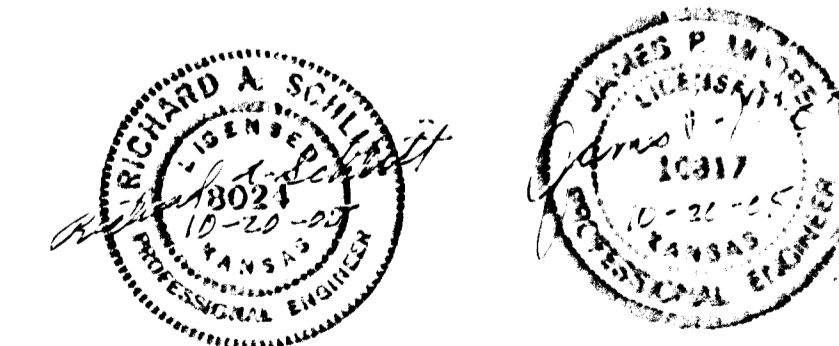
CONVENTIONAL SIGNS

COUNTY LINE	-----	CENTER LINE OF PROJECT	-----
CITY LIMITS	=====	TERRACE	-----
STATE OR NATIONAL LINE	-----	CULVERTS	-----
TOWNSHIP, SECTION or GRANT LINE	-----	DROP INLET & STORM SEWER	-----
PROPERTY LINE	-----	ACCESS CONTROL	-----
HIGHWAY FENCE	-----	POWER POLE	-----
EXISTING FENCE	-----	TELEPHONE POLE	-----
GUARD FENCE	-----	MARSH	-----
CONSTRUCTION LIMITS	-----	HEDGE	-----
RIGHT OF WAY LINE	-----	TREES	-----
TRAVELED WAY	-----	PROFILE ELEVATION	-----
RAILROADS	-----	STREAM or CREEK	-----

GROSS LENGTH OF PROJECT	9110 FT.
EXCEPTIONS	0
ADDITIONS	0
NET LENGTH OF PROJECT	9110 FT. 1.725 MILES
NET LENGTH OF BRIDGES	0 FT. 0 MILES
NET LENGTH OF ROAD	9110 FT. 1.725 MILES

PLANS PREPARED BY

**Professional Engineering Consultants, P.A.**  
303 S. TOPEKA • WICHITA, KANSAS 67202  
316-262-2691 • FAX 316-262-3003



APPROVED - DATE

JAMES L. ARMOUR, P.E. CITY ENGINEER  
CITY OF WICHITA, SEDGWICK COUNTY, KANSAS  
CITY NO. 472-84004

DATE	BY	SURVEYED	PLOTTED	INKED	DESIGNED	SQUAD

BY:

CSMR: BER OPER: SUB SCALE: 1/2004/04/19/TITLE: GREENWICH.DGN 1-27-2005 15:00:01 LAST REV: