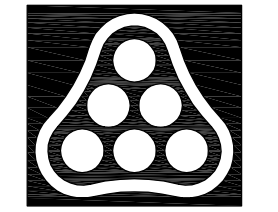
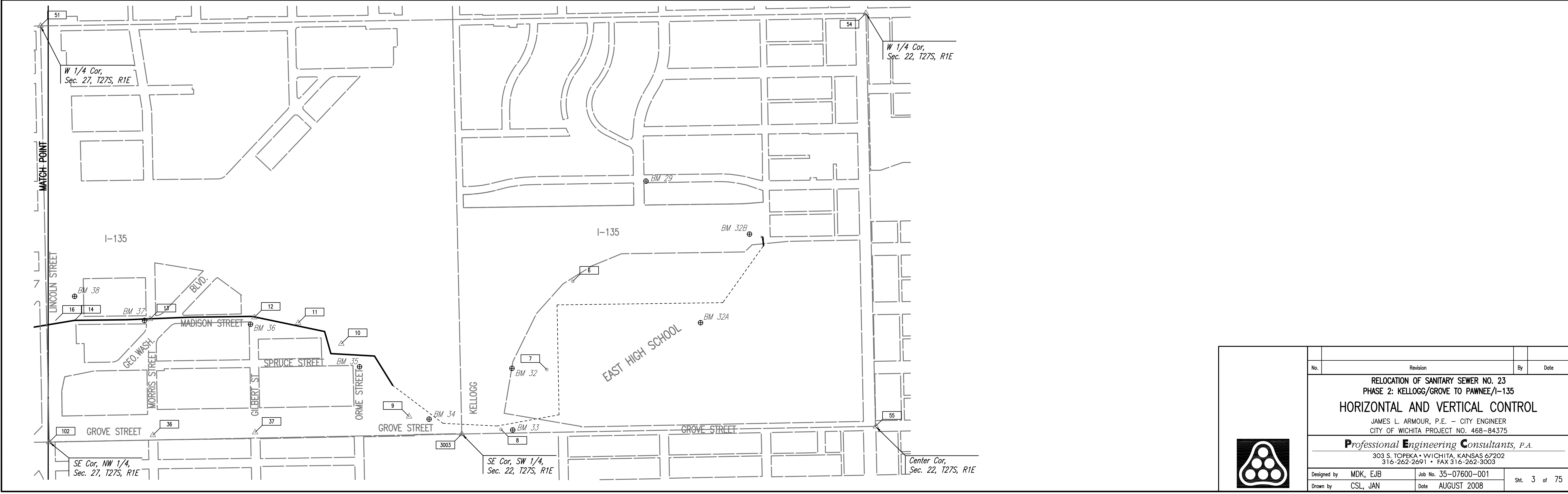
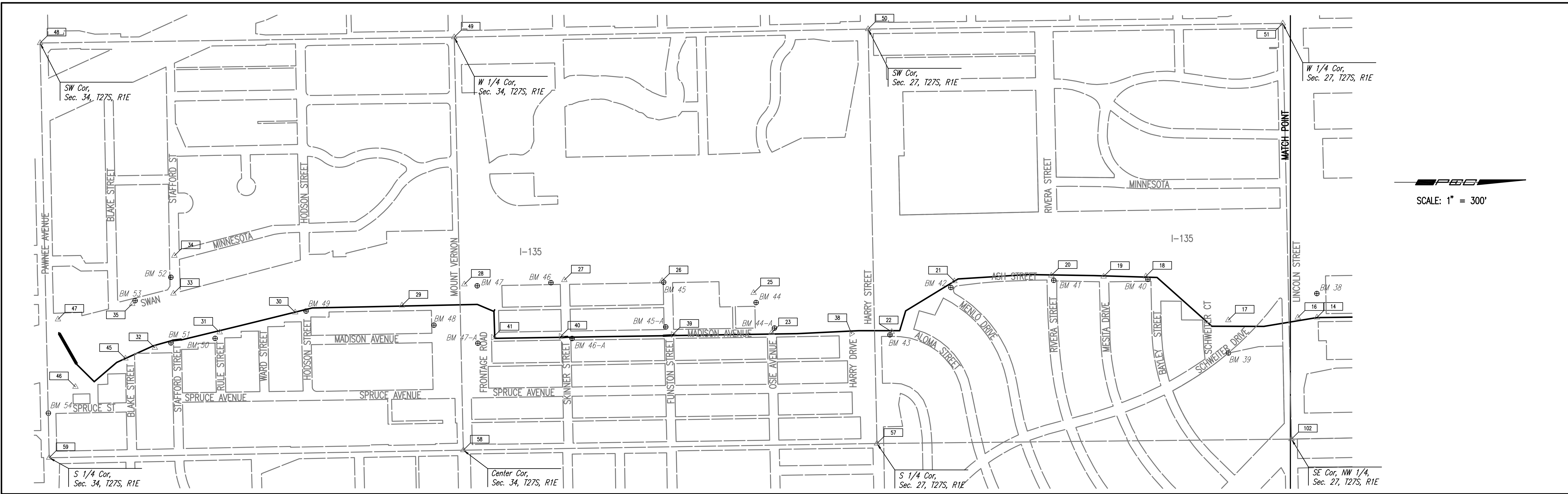


Saved: 03-03-2010 8:11:10 AM by: CSL  
 Plot Scale: 1:300 03-03-2010 8:56:30 AM by: CSL  
 Q:\2007\07600\001\Phase 2\07600-001-C-HVTL



No.	Revision	By	Date
RELOCATION OF SANITARY SEWER NO. 23 PHASE 2: KELLOGG/GROVE TO PAWNEE/I-135 <b>HORIZONTAL AND VERTICAL CONTROL</b> JAMES L. ARMOUR, P.E. - CITY ENGINEER CITY OF WICHITA PROJECT NO. 468-84375 <b>Professional Engineering Consultants, P.A.</b> 303 S. TOPEKA • WICHITA, KANSAS 67202 316-262-2691 • FAX 316-262-3003			
Designed by	MDK, EJB	Job No.	35-07600-001
Drawn by	CSL, JAN	Date	AUGUST 2008
			SHT. 3 of 75