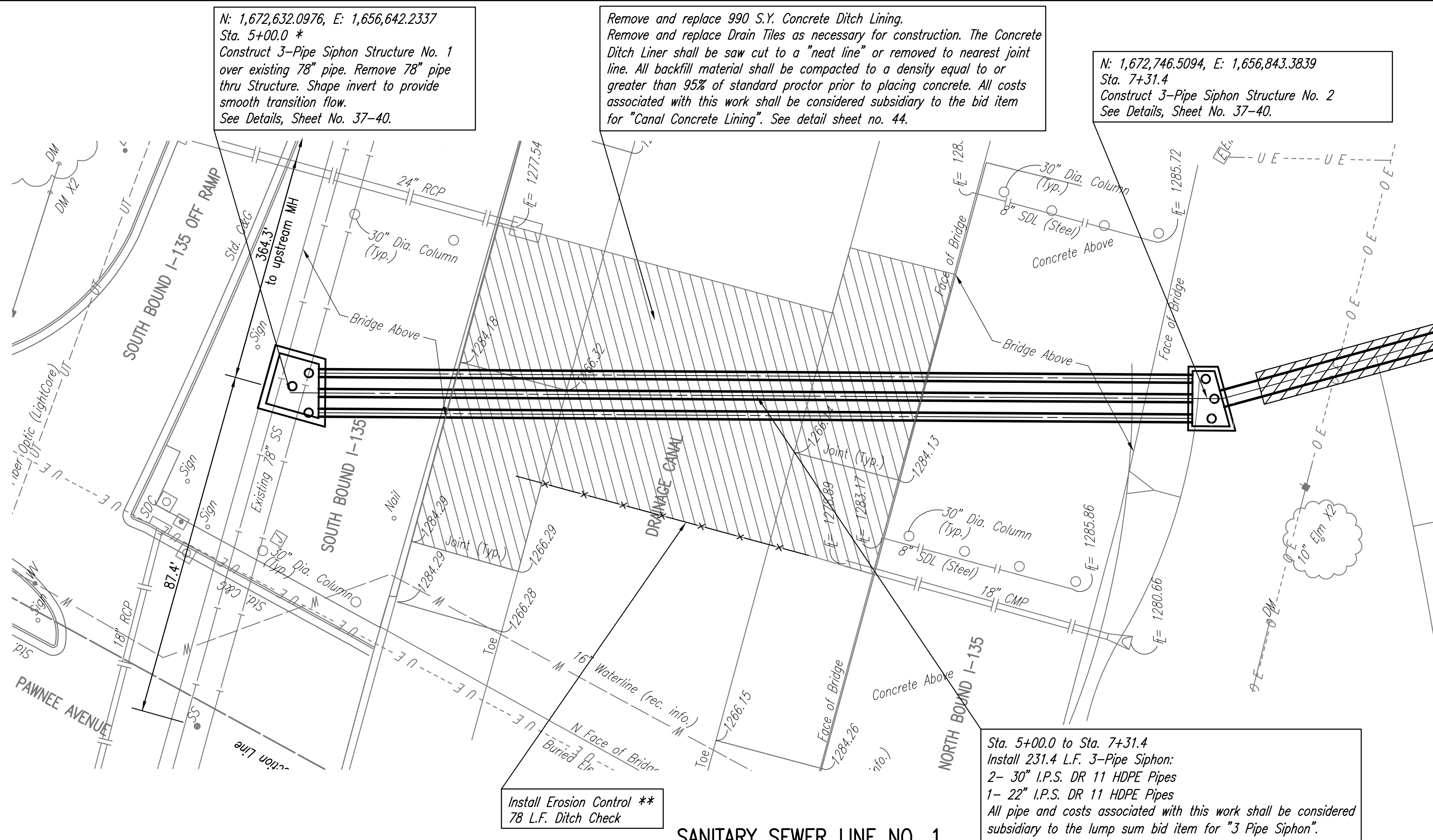


|      |         |    |      |
|------|---------|----|------|
| PLAN | CHECKED | BY | DATE |
|      | CHECKED |    |      |

|         |         |    |      |
|---------|---------|----|------|
| PROFILE | CHECKED | BY | DATE |
|         | CHECKED |    |      |

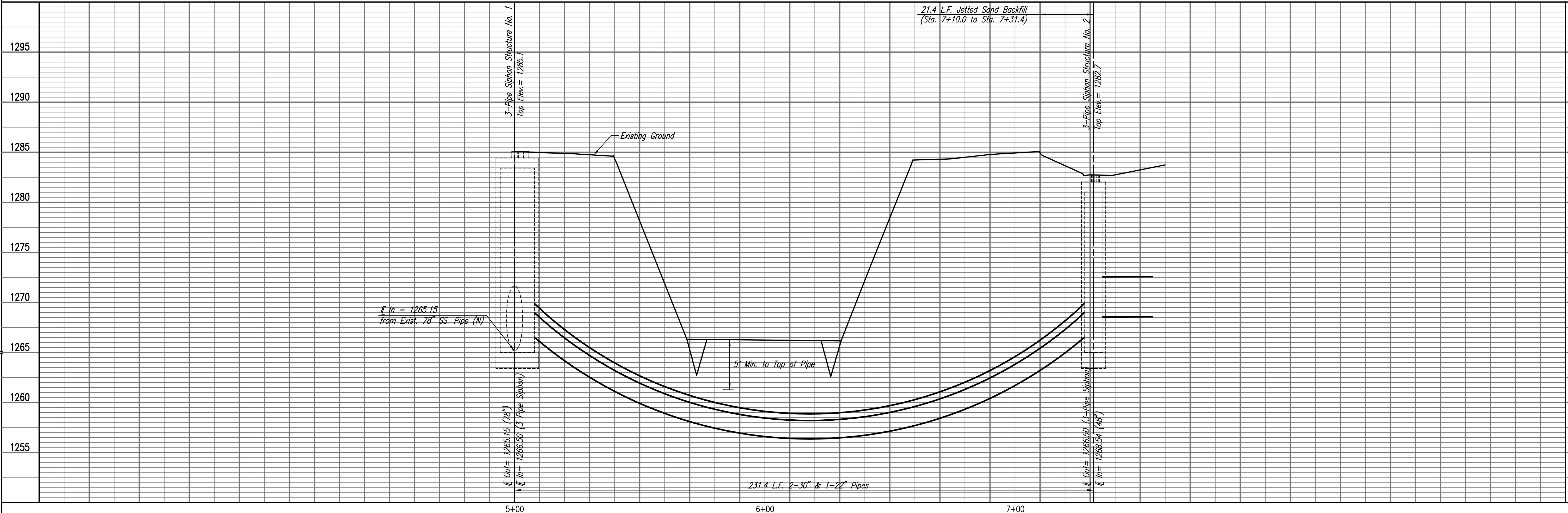
Saved: 03-09-2010 11:59:40 AM by CSI  
 Plot Scale: 1:20 03-09-2010 3:45:12 PM by CSI  
 03-09-2010 11:59:40 AM by CSI  
 03-09-2010 11:59:40 AM by CSI  
 03-09-2010 11:59:40 AM by CSI

NOTE: CONTRACTOR SHALL ERECT TRAFFIC CONTROL DEVICES FOR THE SOUTH BOUND I-135 OFF RAMP IN ACCORDANCE WITH THE "TRAFFIC HANDLING AND CONSTRUCTION SEQUENCE" SHEET NO. 60 AND THE TRAFFIC CONTROL PLAN AND DETAIL SHEET NO. 61-71.



\* PRIOR TO BEGINNING CONSTRUCTION, THE CONTRACTOR SHALL EXCAVATE THE EXISTING 78" PIPE AT SANITARY SEWER STATION 5+00.00 TO VERIFY PIPE TYPE, HORIZONTAL AND VERTICAL LOCATION. THE PIPE LOCATION SHALL BE REPORTED TO THE ENGINEER SO THAT ANY NECESSARY PLAN MODIFICATIONS CAN BE MADE. ANY ADDITIONAL LABOR OR MATERIALS NECESSARY TO COMPLETE THE CONNECTION SHALL BE CONSIDERED SUBSIDIARY TO THE PROJECT.

\*\* PRIOR TO CONSTRUCTION IN DRAINAGE CANAL, CONTRACTOR SHALL SUBMIT AN EROSION AND STORM WATER CONTROL PLAN TO THE CITY OF WICHITA FOR APPROVAL. THE PLAN SHALL INDICATE CONTRACTOR'S PROPOSED METHOD FOR MAINTAINING STORM WATER FLOWS THROUGH THE CONSTRUCTION SITE WITHOUT SEDIMENT LOSS. ALL COSTS ASSOCIATED WITH AN APPROVED PLAN AND IMPLEMENTATION SHALL BE CONSIDERED SUBSIDIARY TO THE "EROSION CONTROL" BID ITEM.



Professional Engineering Consultants, P.A.  
 603 S. TOPICKA AVENUE, WICHITA, KANSAS 67202  
 316-262-2691 • FAX 316-262-3003

Designed By: MDK, EJB  
 Drawn By: CSL, JAN

Job No.: 35-07600-001  
 Date: AUGUST 2008

RELOCATION OF SANITARY SEWER NO. 23  
 PHASE 2: KELLOGG/GROVE TO PANNEE/I-135  
 SANITARY SEWER LINE NO. 1  
 JAMES L. ARMOUR, P.E. - CITY ENGINEER  
 CITY OF WICHITA PROJECT NO. 468-84375

Sheet 5 of 75