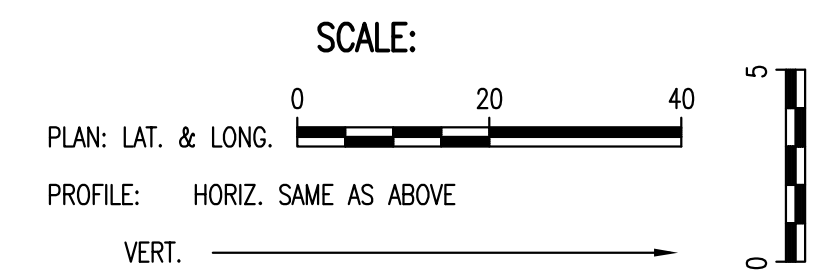
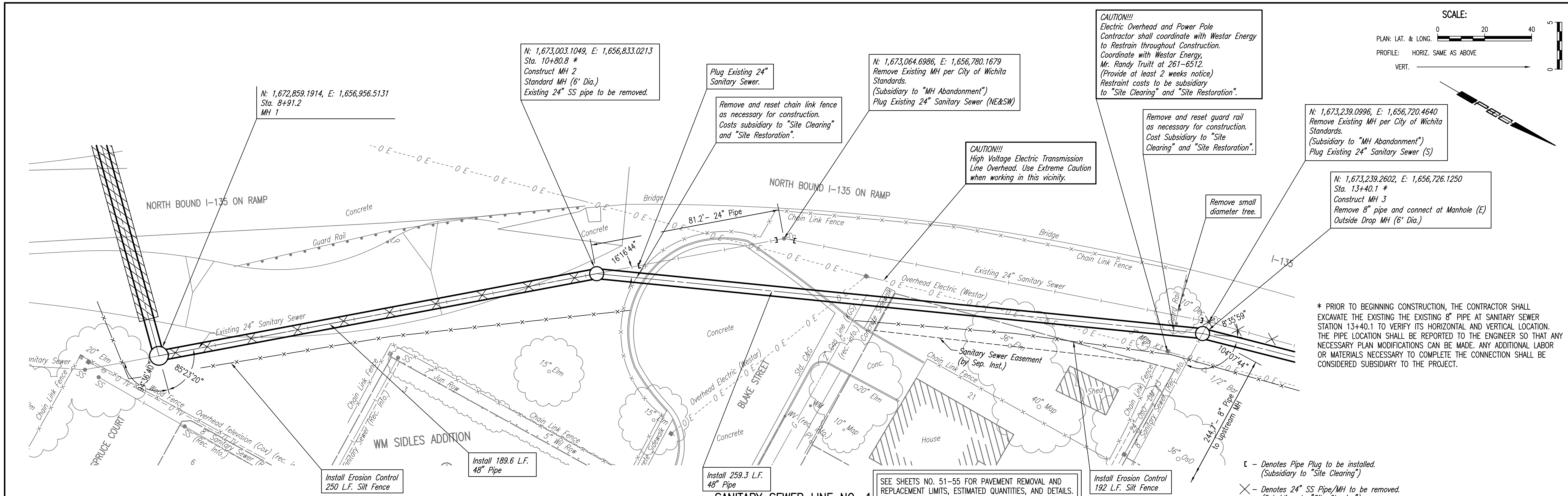


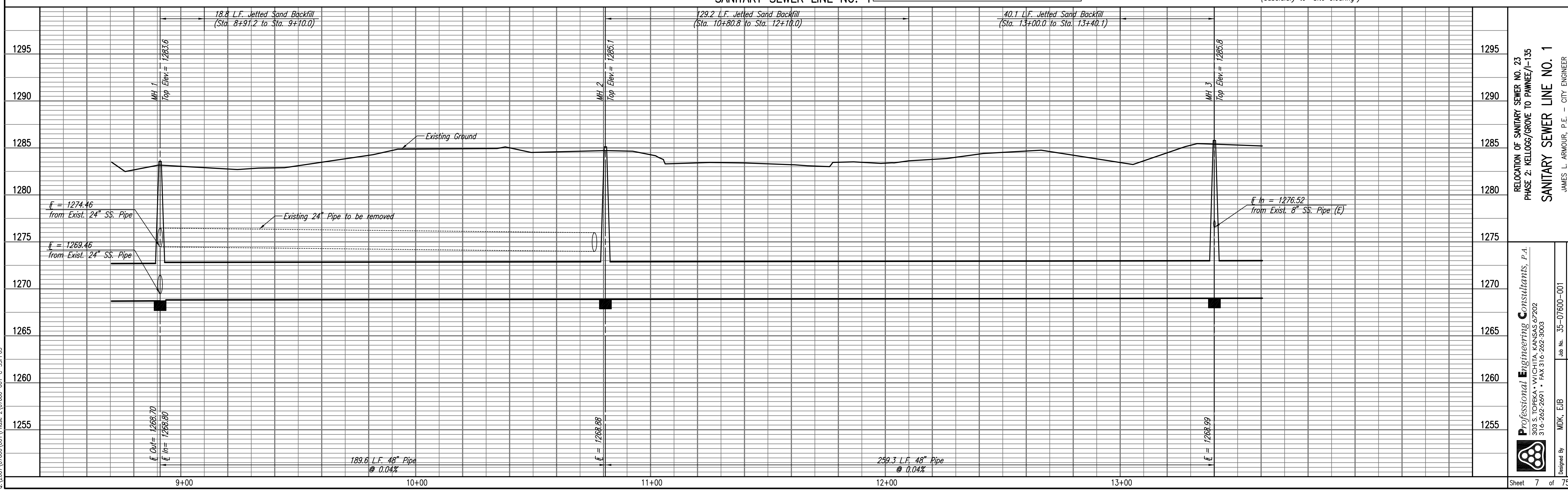
PLAN	CHECKED	DATE
	CHECKED	

PROFILE	CHECKED	DATE
	CHECKED	

Served 03-09-2010 3:40:58 PM by CSL
 Plot Scale 1:20 03-09-2010 3:47:19 PM by CSL
 03/09/2010 07:00:00 Phase 2 07600-01-C-55PP03



* PRIOR TO BEGINNING CONSTRUCTION, THE CONTRACTOR SHALL EXCAVATE THE EXISTING 8" PIPE AT SANITARY SEWER STATION 13+40.1 TO VERIFY ITS HORIZONTAL AND VERTICAL LOCATION. THE PIPE LOCATION SHALL BE REPORTED TO THE ENGINEER SO THAT ANY NECESSARY PLAN MODIFICATIONS CAN BE MADE. ANY ADDITIONAL LABOR OR MATERIALS NECESSARY TO COMPLETE THE CONNECTION SHALL BE CONSIDERED SUBSIDIARY TO THE PROJECT.



RELOCATION OF SANITARY SEWER NO. 23
 PHASE 2: KELLOGG/GROVE TO PANWEE/1-135
SANITARY SEWER LINE NO. 1
 JAMES L. ARMOUR, P.E. - CITY ENGINEER
 CITY OF WICHITA PROJECT NO. 468-84375

Professional Engineering Consultants, P.A.
 603 S. TOPICKA AVENUE, WICHITA, KANSAS 67202
 316-262-2691 • FAX 316-262-3003

Designed By: MDK, EJB
 Drawn By: CSL, JAN
 Job No.: 35-07600-001
 Date: AUGUST 2008

Sheet 7 of 75