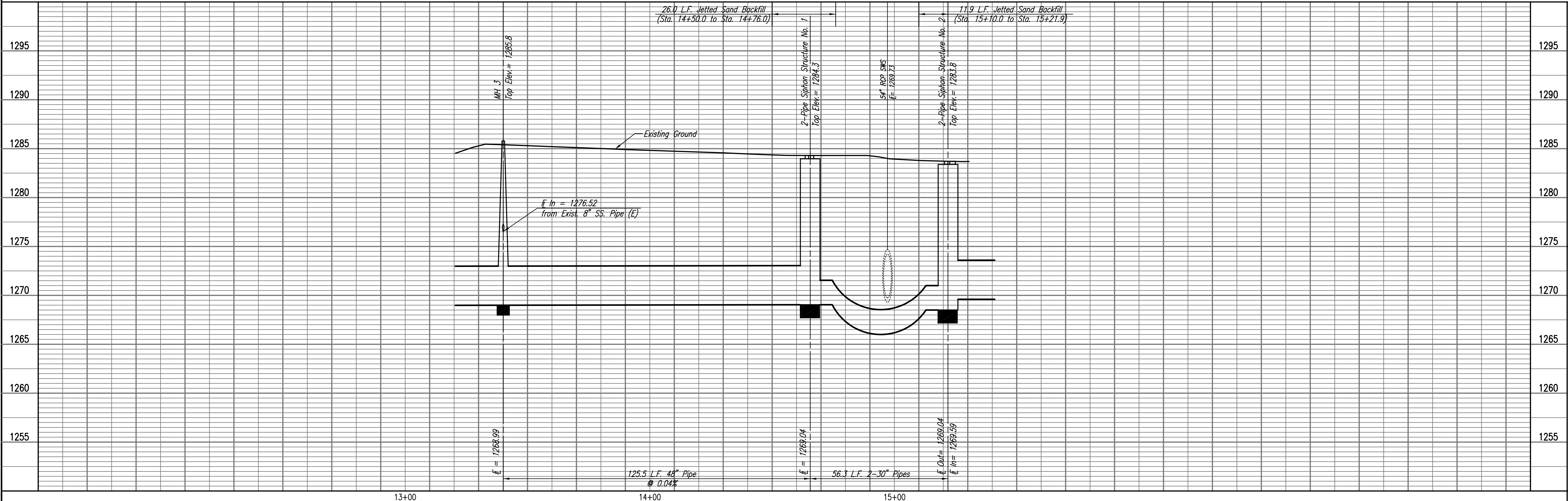
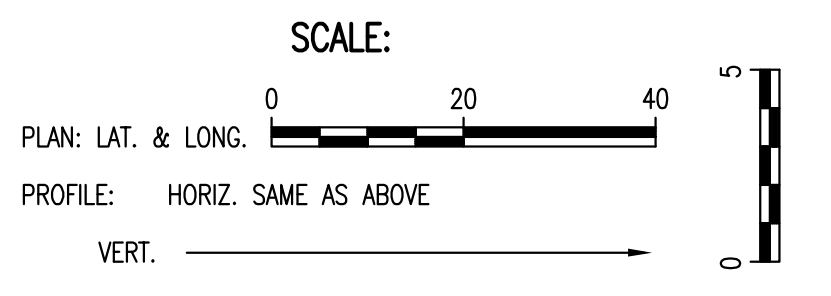
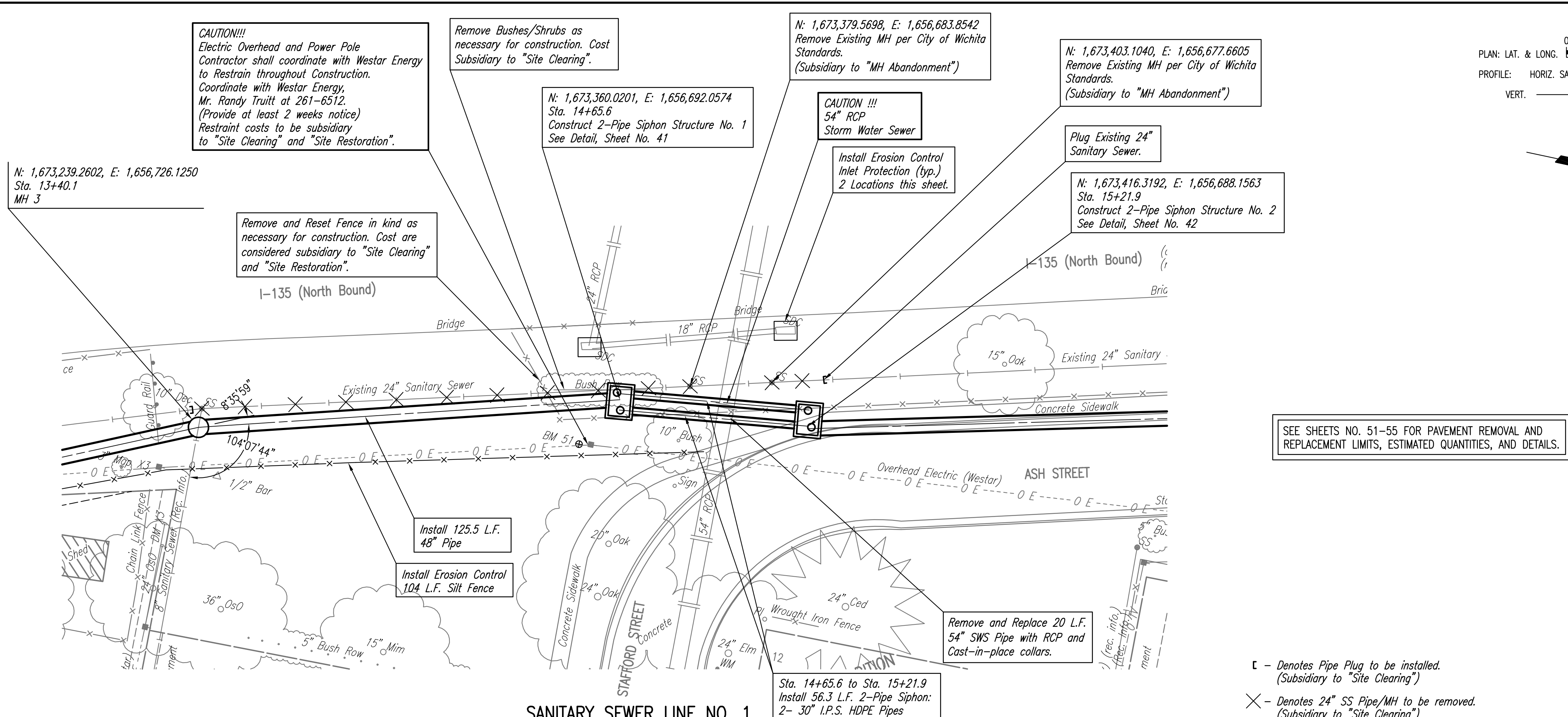


PLAN	CHECKED	DATE
	CHECKED	
BY		

PROFILE	CHECKED	DATE
	CHECKED	
BY		

Scaled 03-09-2010 3:40:22 PM by CSL
 Plot Scale 1:20 03-09-2010 3:48:55 PM by CSL
 03/09/2010 07:00:00 Phase 2\07600-01-C-55PP04



□ - Denotes Pipe Plug to be installed.
 (Subsidiary to "Site Clearing")
 X - Denotes 24" SS Pipe/MH to be removed.
 (Subsidiary to "Site Clearing")

RELOCATION OF SANITARY SEWER NO. 23
 PHASE 2: KELLOGG/GROVE TO PANWEE/1-135
SANITARY SEWER LINE NO. 1
 JAMES L. ARMOUR, P.E. - CITY ENGINEER
 CITY OF WICHITA PROJECT NO. 468-84375

Professional Engineering Consultants, P.A.
 603 S. TOPICKA AVENUE, SUITE 100, WICHITA, KANSAS 67202
 316-262-2691 • FAX 316-262-3003

Designed By: MDK, EJB
 Drawn By: CSL, JAN
 Job No.: 35-07600-001
 Date: AUGUST 2008

Sheet 8 of 75