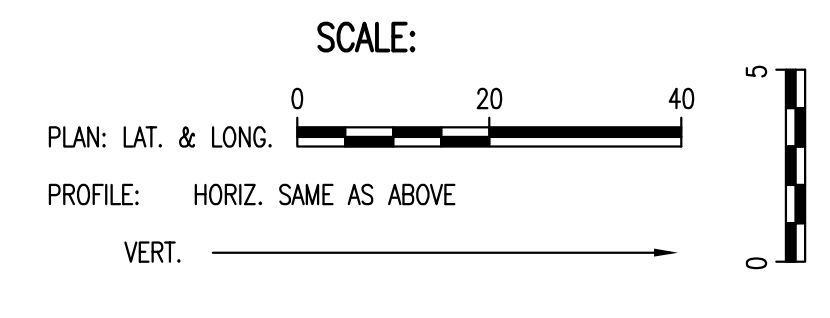
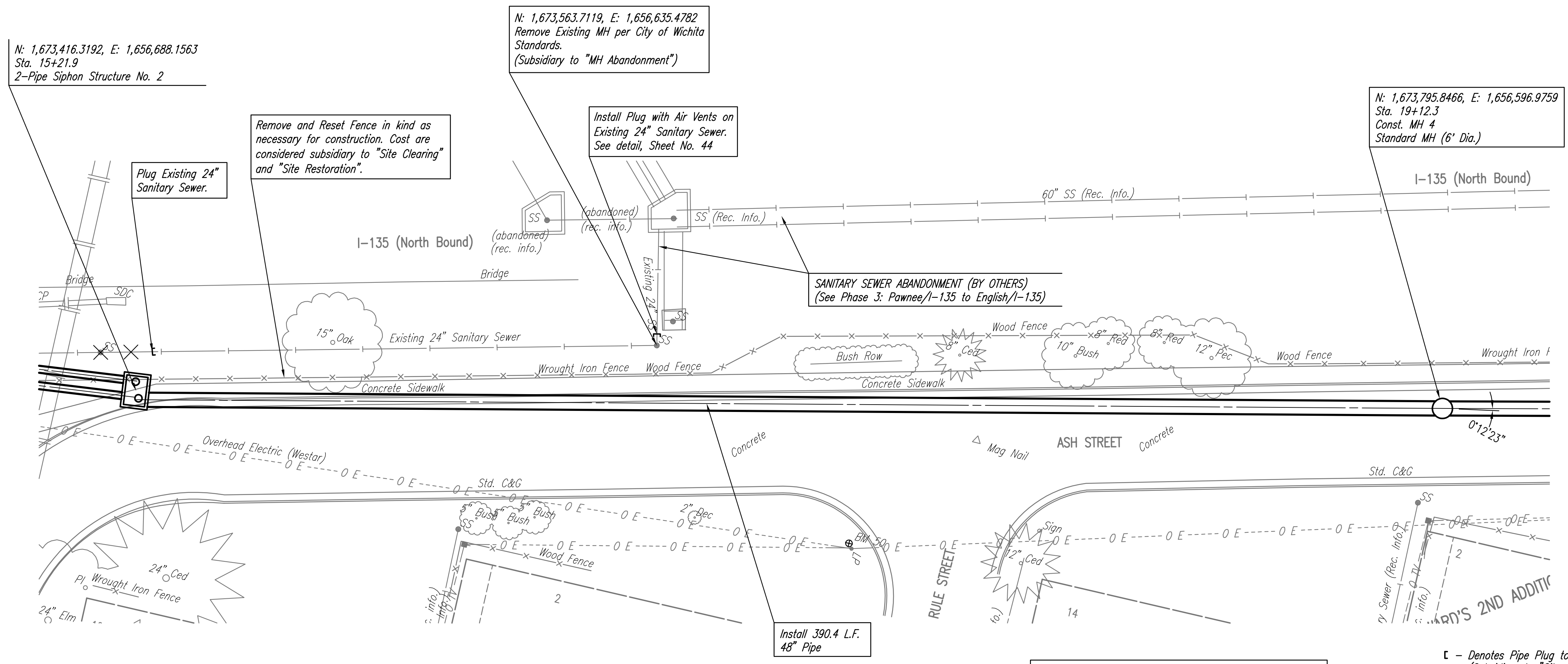


PLAN	CHECKED	DATE
	CHECKED	
BY		

PROFILE	CHECKED	DATE
	CHECKED	
BY		

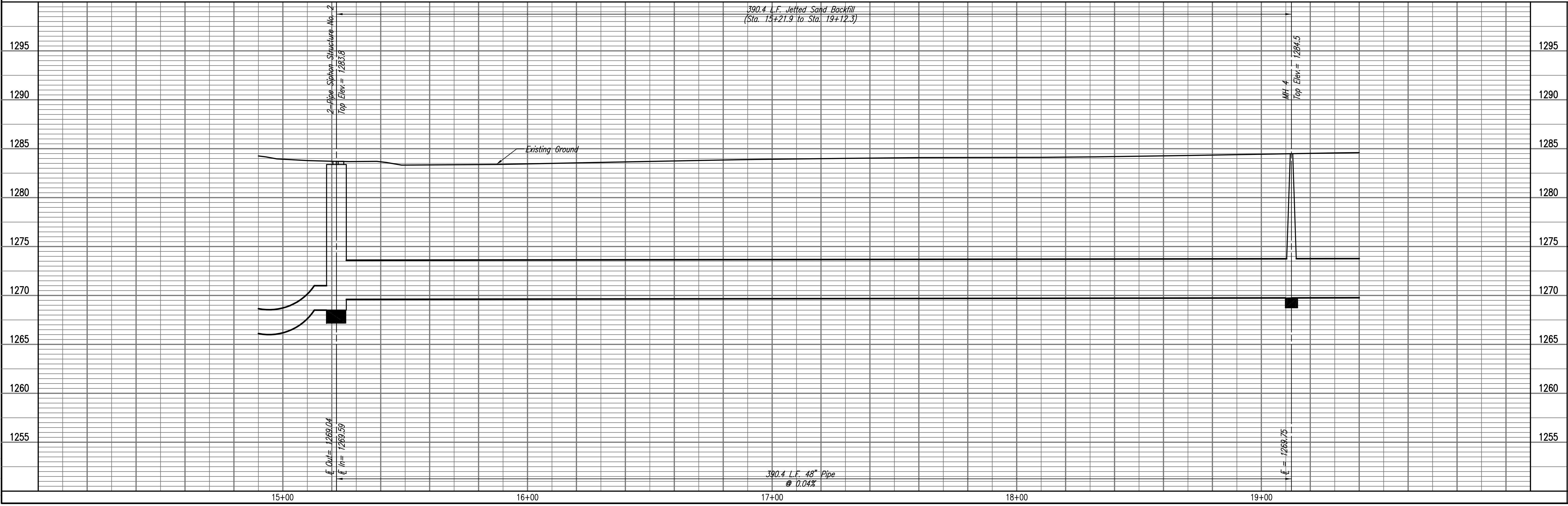
Saved: 03-09-2010 3:39:32 PM by CSL
 Plot Scale: 1/20 03-09-2010 3:49:33 PM by CSL
 03-09-2010 03:49:33 PM by CSL
 03/09/2010 03:49:33 PM by CSL
 03/09/2010 03:49:33 PM by CSL
 03/09/2010 03:49:33 PM by CSL



SANITARY SEWER LINE NO. 1

SEE SHEETS NO. 51-55 FOR PAVEMENT REMOVAL AND REPLACEMENT LIMITS, ESTIMATED QUANTITIES, AND DETAILS.

- - Denotes Pipe Plug to be installed. (Subsidiary to "Site Clearing")
- ✕ - Denotes 24" SS Pipe/MH to be removed. (Subsidiary to "Site Clearing")



RELOCATION OF SANITARY SEWER NO. 23
 PHASE 2: KELLOGG/GROVE TO PAWNEE/I-135
SANITARY SEWER LINE NO. 1
 JAMES L. ARMOUR, P.E. - CITY ENGINEER
 CITY OF WICHITA PROJECT NO. 468-84375

Professional Engineering Consultants, P.A.
 603 S. TOPICKA AVENUE, SUITE 100, WICHITA, KANSAS 67202
 316-262-2691 • FAX 316-262-3003
 Job No. 35-07600-001 Date AUGUST 2008
 Designed By MDK, EJB
 Drawn By CSL, JAN
 Sheet 9 of 75