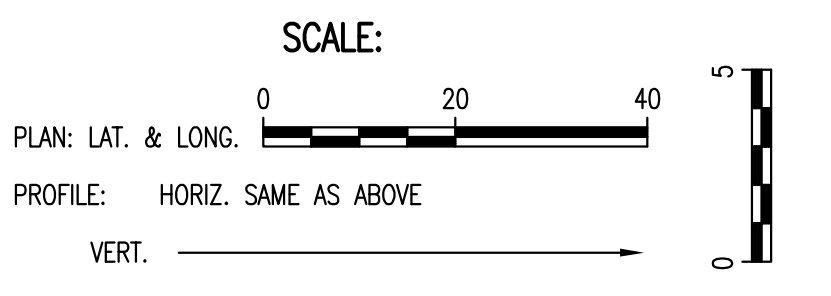
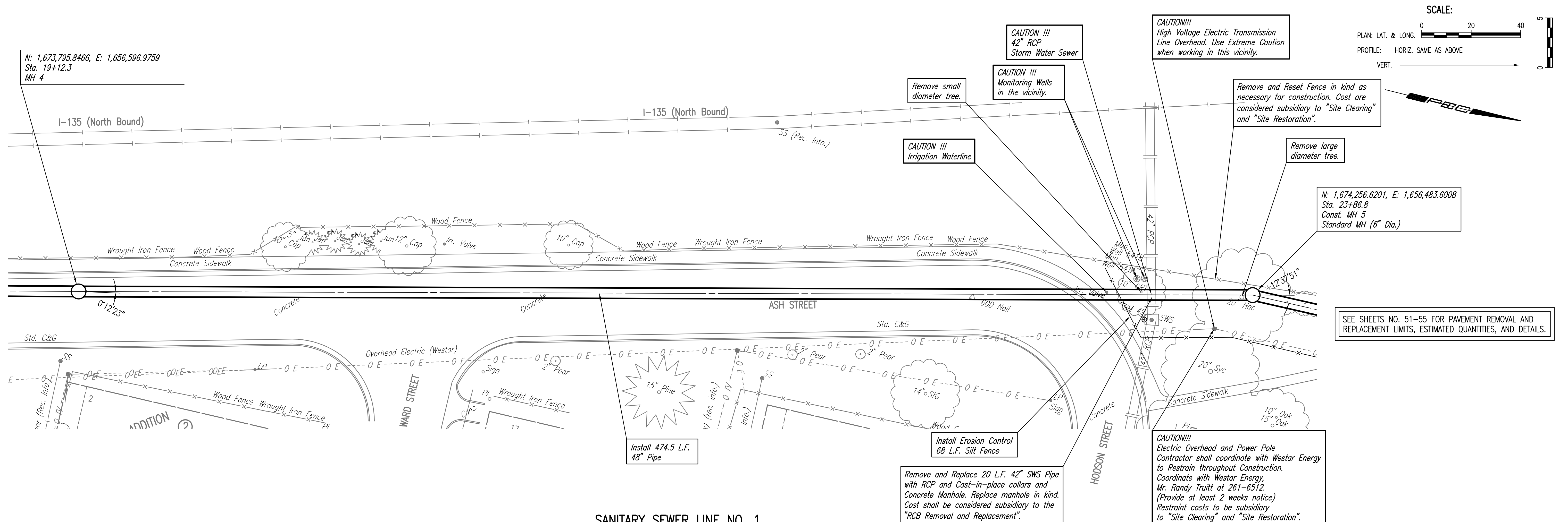


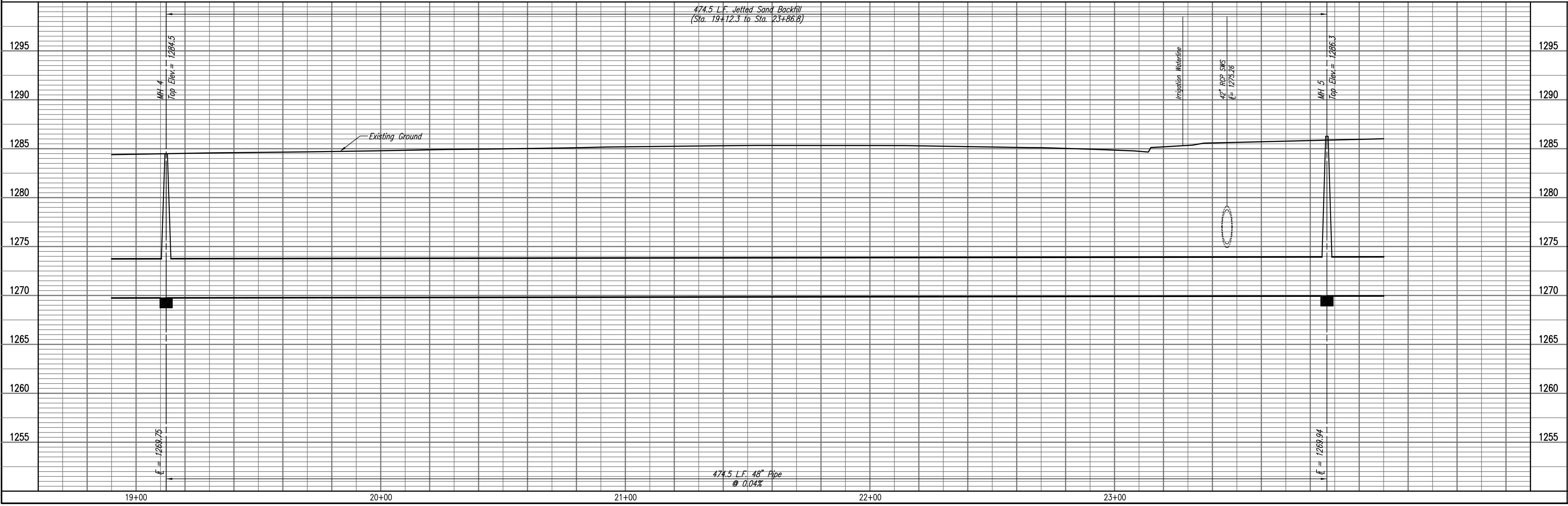
PLAN	CHECKED	DATE
	CHECKED	

PROFILE	CHECKED	DATE
	CHECKED	



**SANITARY SEWER LINE NO. 1**

474.5 L.F. Jetted Sand Backfill  
(Sta. 19+12.3 to Sta. 23+86.8)



Drawn: 03-09-2010 3:56:24 PM by CSL  
Plot Scale: 1:20 03-09-2010 3:56:48 PM by CSL  
03/09/2010 07:00:00 Phase 2\07600-01-C-SSPP06

RELOCATION OF SANITARY SEWER NO. 23  
PHASE 2: KELLOGG/GROVE TO PANWEE/-135  
**SANITARY SEWER LINE NO. 1**  
JAMES L. ARMOUR, P.E. - CITY ENGINEER  
CITY OF WICHITA PROJECT NO. 468-84375

Professional Engineering Consultants, P.A.  
603 S. TOPICKA AVENUE, WICHITA, KANSAS 67202  
316-262-2691 • FAX 316-262-3003

Job No. 35-07600-001  
Date AUGUST 2008

Designed By MDK, EJB  
Drawn By CSL, JAN

Sheet 10 of 75