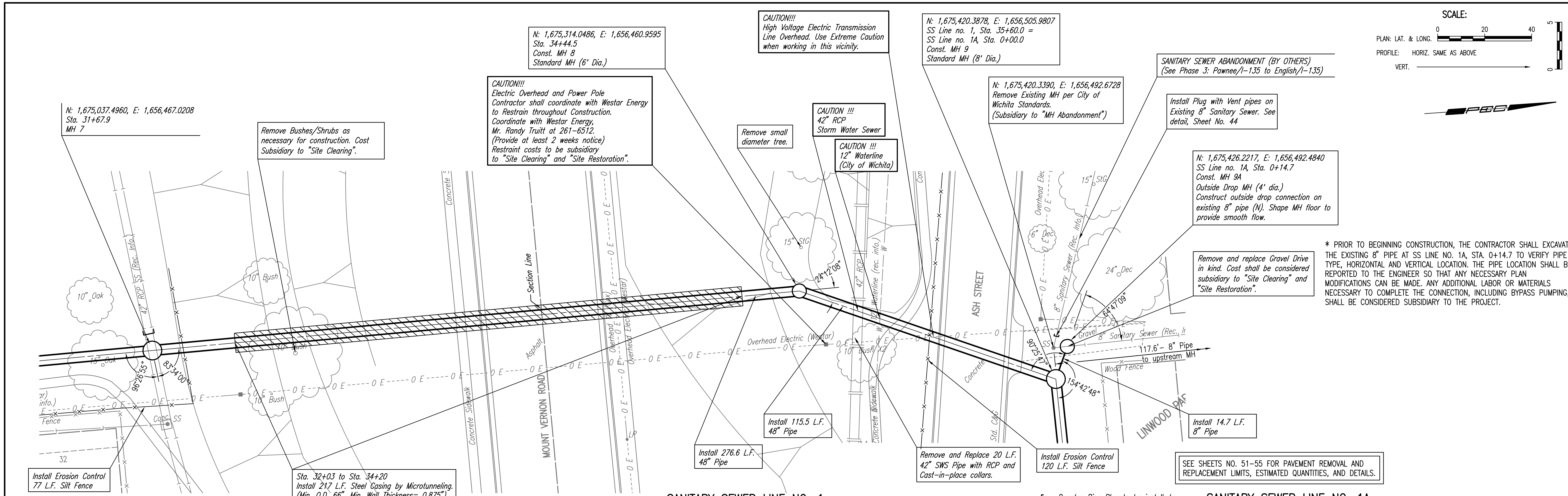


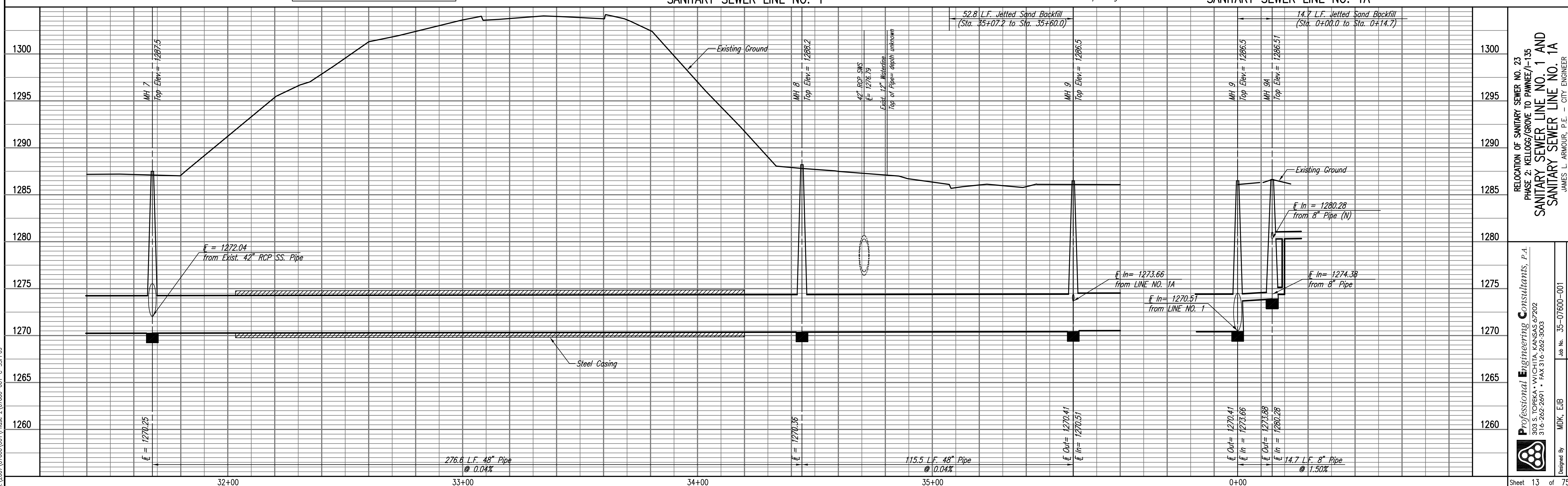
PLAN	CHECKED	DATE
	CHECKED	

PROFILE	CHECKED	DATE
	CHECKED	

Saved: 03-09-2010 3:55:24 PM by CSL
 Plot Scale: 1:20 03-09-2010 3:59:11 PM by CSL
 03-2007\07600\001\Phase 2\07600-01-C-SSPP03



* PRIOR TO BEGINNING CONSTRUCTION, THE CONTRACTOR SHALL EXCAVATE THE EXISTING 8" PIPE AT SS LINE NO. 1A, STA. 0+14.7 TO VERIFY PIPE TYPE, HORIZONTAL AND VERTICAL LOCATION. THE PIPE LOCATION SHALL BE REPORTED TO THE ENGINEER SO THAT ANY NECESSARY PLAN MODIFICATIONS CAN BE MADE. ANY ADDITIONAL LABOR OR MATERIALS NECESSARY TO COMPLETE THE CONNECTION, INCLUDING BYPASS PUMPING, SHALL BE CONSIDERED SUBSIDIARY TO THE PROJECT.



RELOCATION OF SANITARY SEWER NO. 23
 PHASE 2: KELLOGG/GROVE TO PAWNEE/1-135
 SANITARY SEWER LINE NO. 1 AND
 SANITARY SEWER LINE NO. 1A
 JAMES L. ARMOUR, P.E. - CITY ENGINEER
 CITY OF WICHITA PROJECT NO. 468-84375

Professional Engineering Consultants, P.A.
 903 S. TOPICKA AVENUE, SUITE 100, WICHITA, KANSAS 67202
 316.262.2691 • FAX 316.262.3003
 Designed By: MDK, EJB
 Drawn By: CSL, JAN
 Job No.: 35-07600-001
 Date: AUGUST 2008
 Sheet 13 of 75