

N: 1,680,354.2370, E: 1,656,601.7754  
 Sta. 89+34.0 (back) =  
 Sta. 89+26.7 (ahead)  
 MH 22

Remove and Reset Fence in kind as necessary for construction. Cost Subsidiary to "Site Clearing" and "Site Restoration".

Remove large diameter trees.

CAUTION!!!  
 High Voltage Electric Transmission Line Overhead. Use Extreme Caution when working in this vicinity.

Remove and Replace 20 L.F. 4'x6' RCB Pipe with Precast RCB and Cast-in-place Collars.

CAUTION !!!  
 4' x 6' RCB Storm Water Sewer

CAUTION !!!  
 4" Gas Line \*\* (Black Hills Energy)

N: 1,680,694.1692, E: 1,656,545.2883  
 Sta. 92+71.3 \*  
 Construct MH 23 over existing 21" pipe. Remove 21" pipe thru MH. Standard MH (8' Dia.)

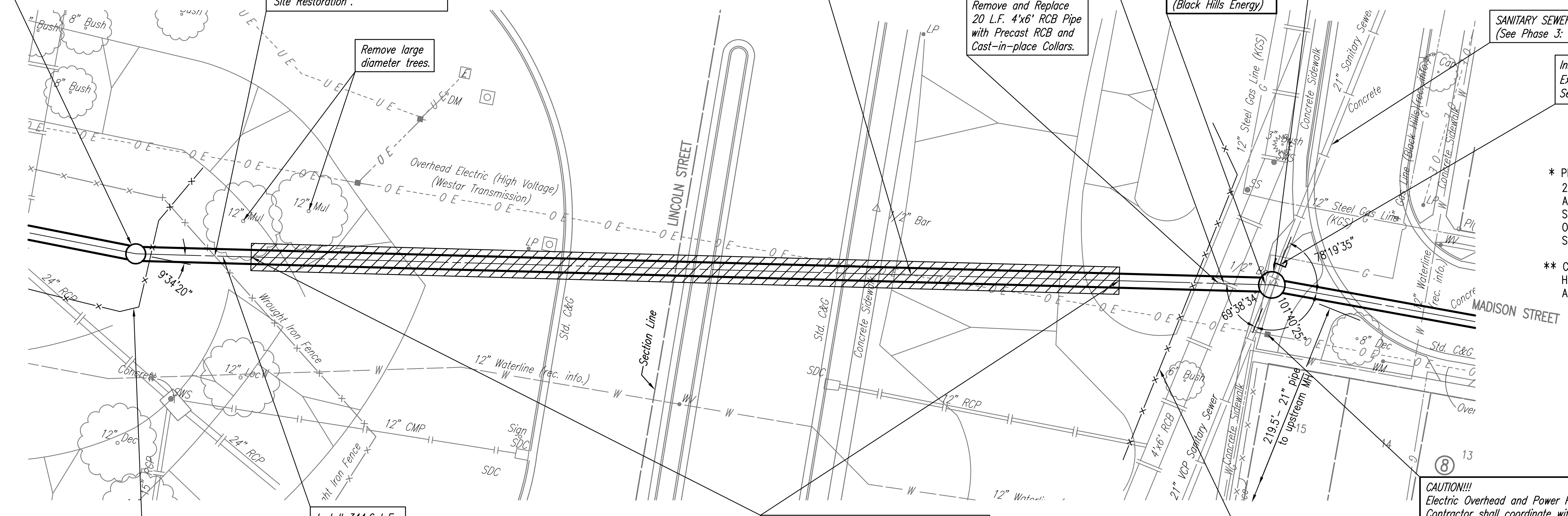
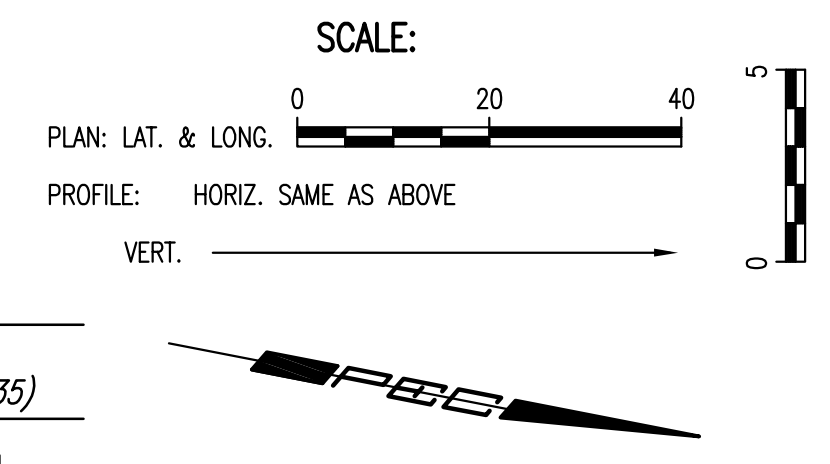
SANITARY SEWER ABANDONMENT (BY OTHERS)  
 (See Phase 3: Pawnee/1-135 to English/1-135)

Install Plug with Vent pipes on Existing 21" Sanitary Sewer. See detail, Sheet No. 44

\* PRIOR TO BEGINNING CONSTRUCTION, THE CONTRACTOR SHALL EXCAVATE THE EXISTING 21" PIPE AT SANITARY SEWER STATION 92+71.3 TO VERIFY PIPE TYPE, HORIZONTAL AND VERTICAL LOCATION. THE PIPE LOCATION SHALL BE REPORTED TO THE ENGINEER SO THAT ANY NECESSARY PLAN MODIFICATIONS CAN BE MADE. ANY ADDITIONAL LABOR OR MATERIALS NECESSARY TO COMPLETE THE CONNECTION SHALL BE CONSIDERED SUBSIDIARY TO THE PROJECT.

\*\* CONTRACTOR SHALL COORDINATE THE RELOCATION OF THE 4" GAS LINE WITH BLACK HILLS ENERGY AS NECESSARY FOR CONSTRUCTION. PROVIDE AT LEAST 2 WEEKS ADVANCED NOTICE TO UTILITY COMPANY.

CAUTION!!!  
 Electric Overhead and Power Pole Contractor shall coordinate with Westar Energy to Restrain throughout Construction. Coordinate with Westar Energy, Mr. Randy Truitt at 261-6512. (Provide at least 2 weeks notice) Restraint costs to be subsidiary to "Site Clearing" and "Site Restoration".



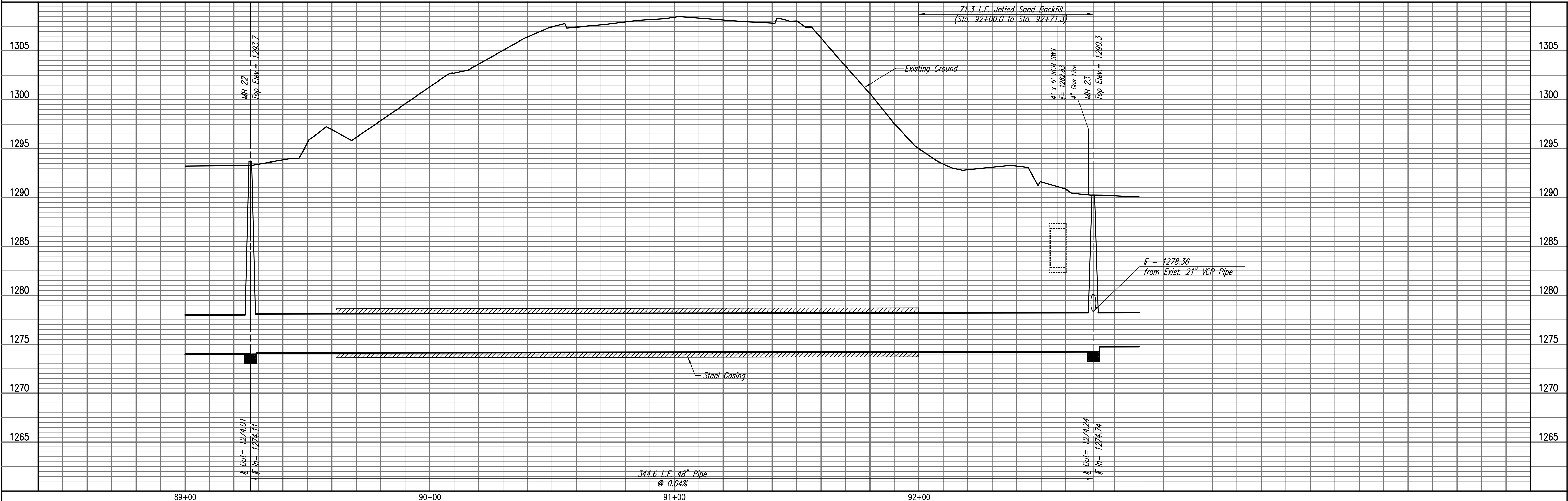
Sta. 89+62 to Sta. 92+25  
 Install 263 L.F. Steel Casing by microtunneling.  
 (Min. O.D. 66", Min. Wall Thickness = 0.875")

Install Erosion Control 110 L.F. Silt Fence

Install Erosion Control 54 L.F. Silt Fence

Install 344.6 L.F. 48" Pipe

SANITARY SEWER LINE NO. 1



MH 22  
 Top Elev. = 1283.7

4' x 6' RCB SWS  
 E = 1282.83

4" Gas Line  
 E = 1280.3

MH 23  
 Top Elev. = 1280.3

E = 1278.36  
 from Exist. 21" VCP Pipe

344.6 L.F. 48" Pipe  
 @ 0.04%

E.O.V. = 1274.01  
 E.I.V. = 1274.11

E.O.V. = 1274.24  
 E.I.V. = 1274.74

89+00

90+00

91+00

92+00

PLAN	CHECKED	BY	DATE
	CHECKED		

PROFILE	CHECKED	BY	DATE
	CHECKED		

Save 03-09-2010 2:08:46 PM by CSL  
 Plot Scale 1:20 03-09-2010 4:08:02 PM by CSL  
 G:\2007\07600\001\Phase 2\07600-01-C-55PP24

RELOCATION OF SANITARY SEWER NO. 23  
 PHASE 2: KELLOGG/GROVE TO PAWNEE/1-135  
**SANITARY SEWER LINE NO. 1**  
 JAMES L. ARMOUR, P.E. - CITY ENGINEER  
 CITY OF WICHITA PROJECT NO. 468-84375

Professional Engineering Consultants, P.A.  
 803 S. TOPICKA AVENUE, SUITE 100, WICHITA, KANSAS 67202  
 316.262.2691 • FAX 316.262.3003

Designed By: MDK, EJB  
 Drawn By: CSL, JAN  
 Job No.: 35-07600-001  
 Date: AUGUST 2008