

SCALE:

PLAN: LAT. & LONG. 0 20 40

PROFILE: HORIZ. SAME AS ABOVE

VERT. 0



N: 1,681,830.7675, E: 1,656,519.5603
Sta. 104+08.3
MH 26

CAUTION !!!
6" Waterline
(City of Wichita)

CAUTION !!!
Existing 8" Sanitary Sewer
(to be abandoned)

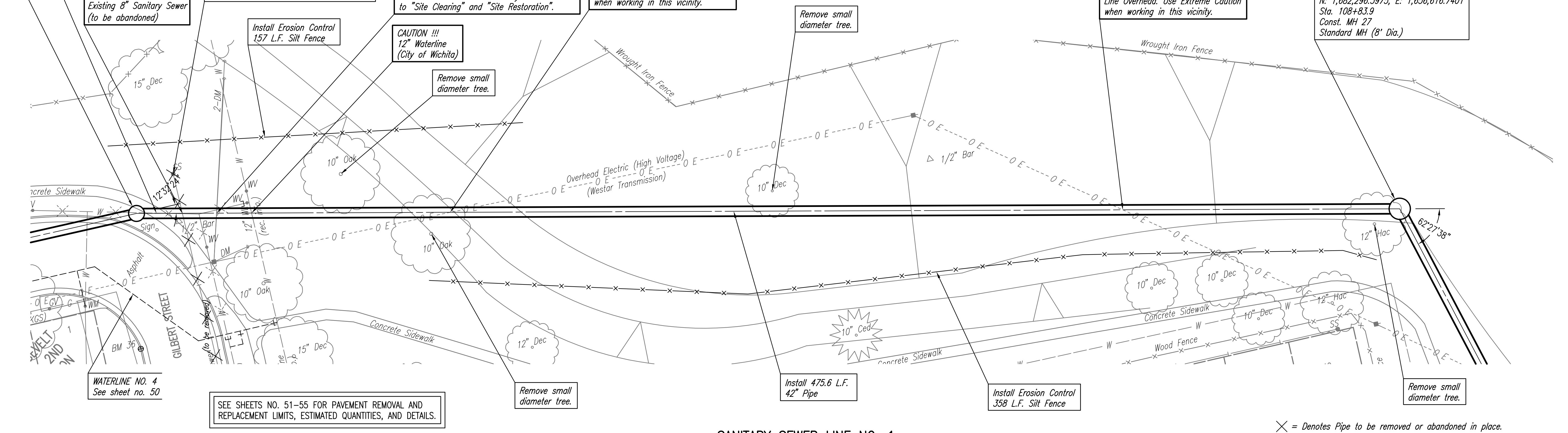
N: 1,681,847.3651, E: 1,656,507.8673
Remove existing MH and abandon 155.6
L.F. existing 8" Sanitary Sewer Line (E) to
next MH. Plug existing 8" pipe (W) at
existing MH as shown on sheet no. 2. All
cost associated with this work shall be
considered subsidiary to "Site Clearing".

CAUTION!!!
Power Pole and Guy Wire
Contractor shall coordinate with Westar Energy
to Restrain Pole throughout Construction.
Coordinate with Westar Energy,
Mr. Randy Truitt at 261-6512.
(Provide at least 2 weeks notice)
Restraint costs to be subsidiary
to "Site Clearing" and "Site Restoration".

CAUTION!!!
High Voltage Electric Transmission
Line Overhead. Use Extreme Caution
when working in this vicinity.

CAUTION!!!
High Voltage Electric Transmission
Line Overhead. Use Extreme Caution
when working in this vicinity.

N: 1,682,296.3975, E: 1,656,616.7401
Sta. 108+83.9
Const. MH 27
Standard MH (8' Dia.)



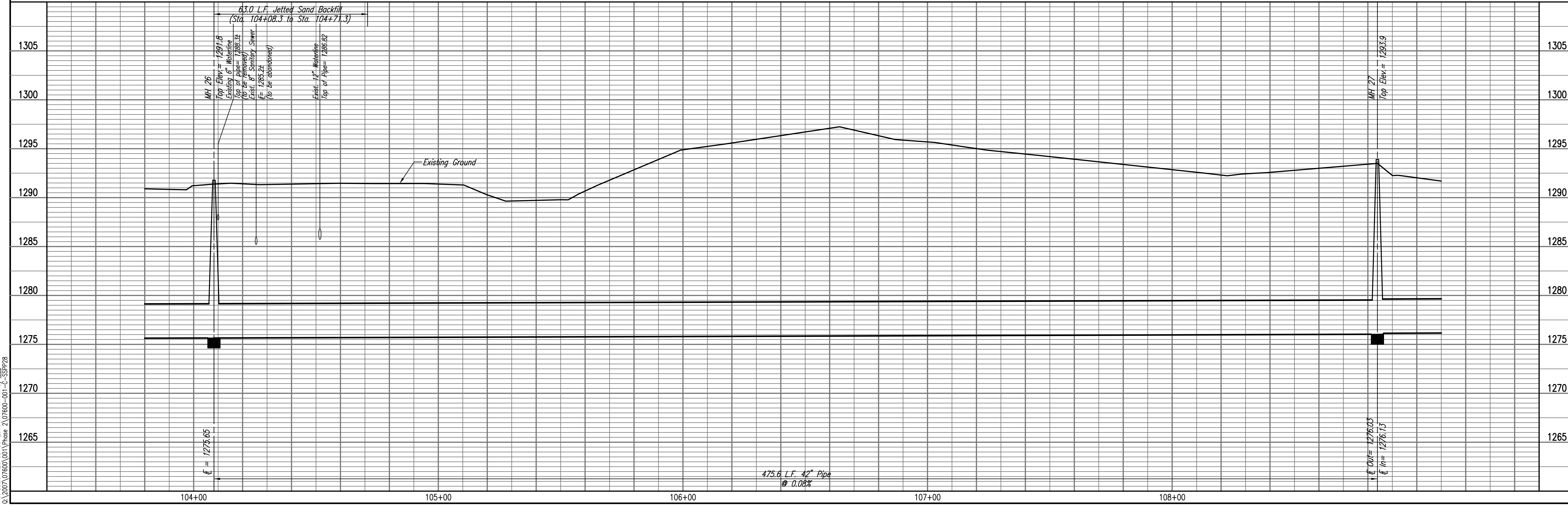
SEE SHEETS NO. 51-55 FOR PAVEMENT REMOVAL AND
REPLACEMENT LIMITS, ESTIMATED QUANTITIES, AND DETAILS.

SANITARY SEWER LINE NO. 1

X = Denotes Pipe to be removed or abandoned in place.
(Subsidiary to "Site Clearing")

| | | |
|------|---------|------|
| PLAN | CHECKED | DATE |
| | CHECKED | |

| | | |
|---------|---------|------|
| PROFILE | CHECKED | DATE |
| | CHECKED | |



Printed: 03-09-2010 3:28:28 PM by CSL
Plot Scale: 1:20 03-09-2010 4:11:47 PM by CSL
03/09/2010 07:00:00 Phase 2\07600-01-C-55PP28

RELOCATION OF SANITARY SEWER NO. 23
PHASE 2: KELLOGG/GROVE TO PANWEE/1-135
SANITARY SEWER LINE NO. 1
JAMES L. ARMOUR, P.E. - CITY ENGINEER
CITY OF WICHITA PROJECT NO. 468-84375

Professional Engineering Consultants, P.A.
603 S. TOPICKA AVENUE, WICHITA, KANSAS 67202
316-262-2691 • FAX 316-262-3003

Designed By: MDK, EJB
Drawn By: CSL, JAN
Job No.: 35-07600-001
Date: AUGUST 2008