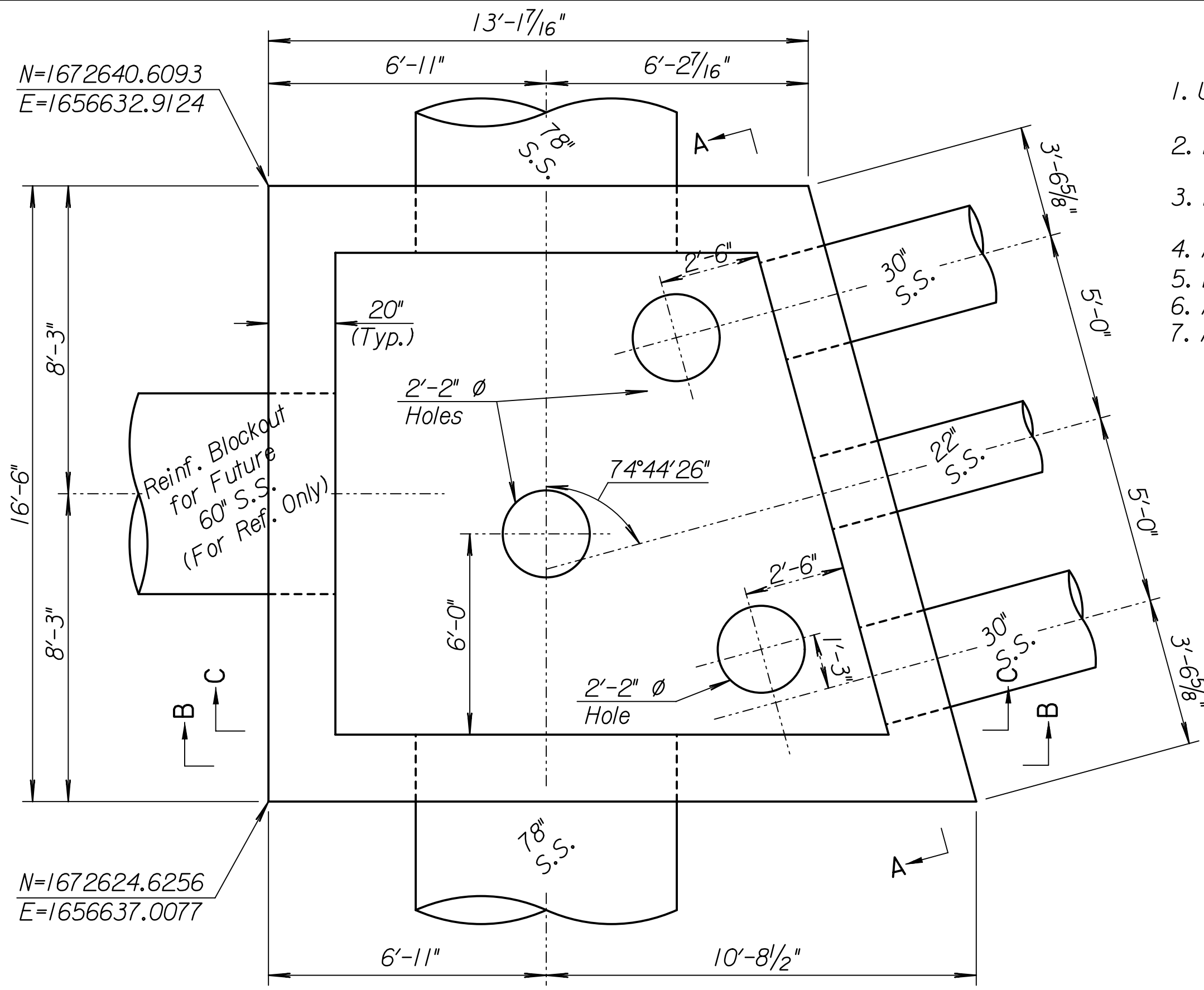
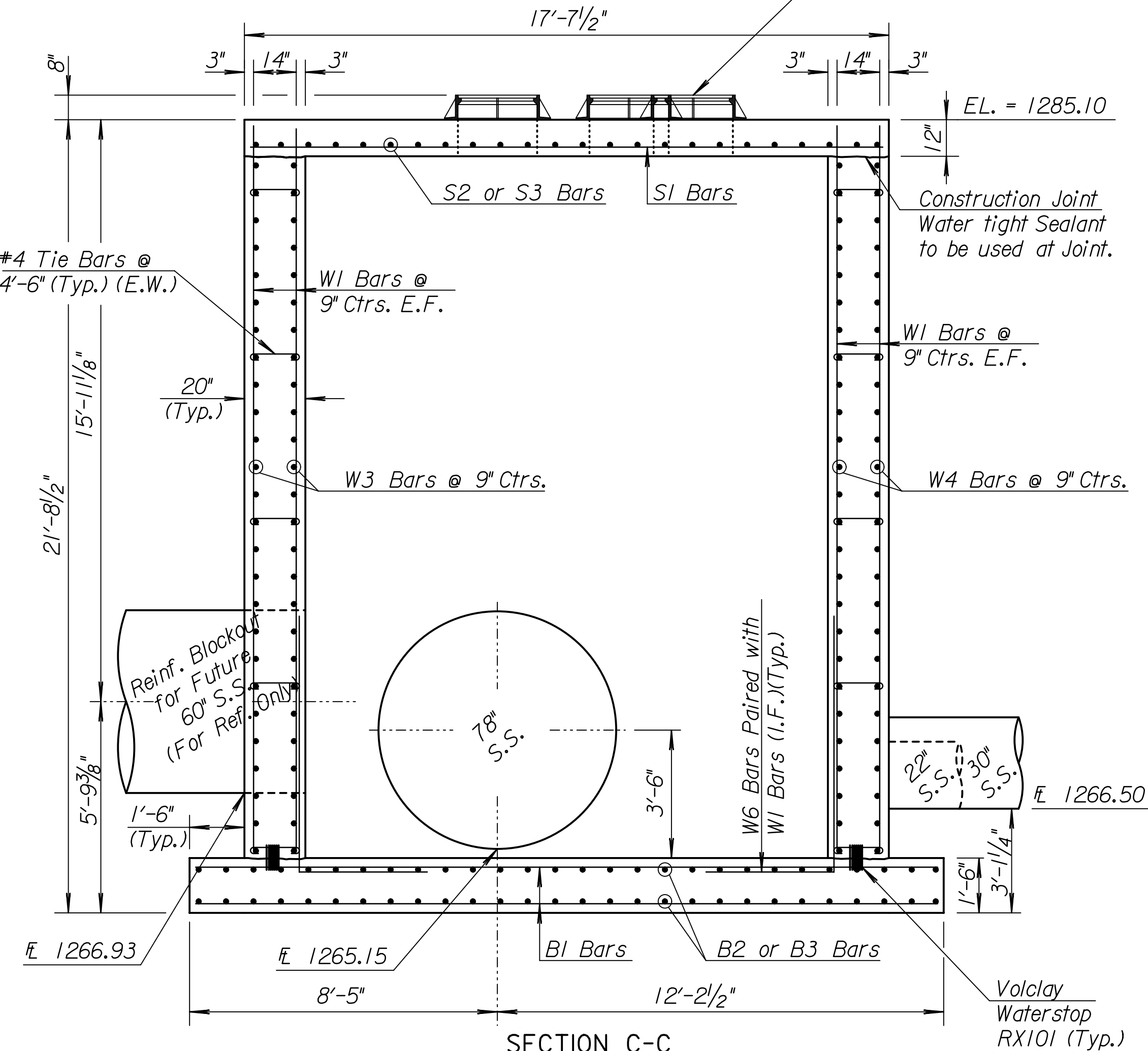


N=1672640.6093  
E=1656632.9124



PLAN

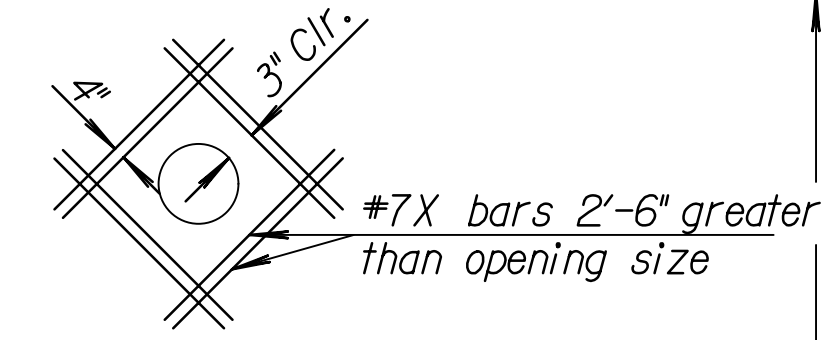
N=1672624.6256  
E=1656637.0077



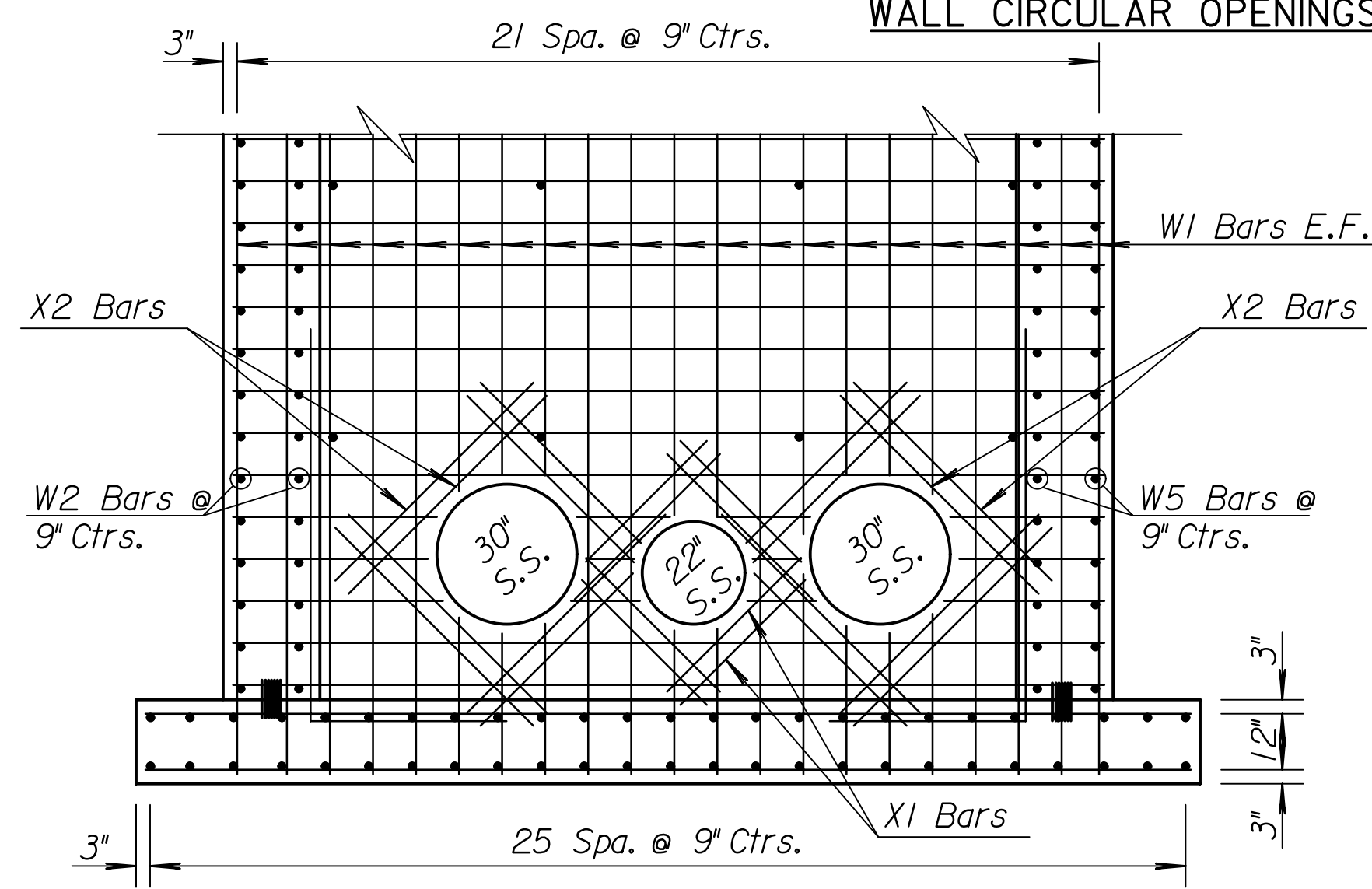
SECTION C-C

GENERAL NOTES

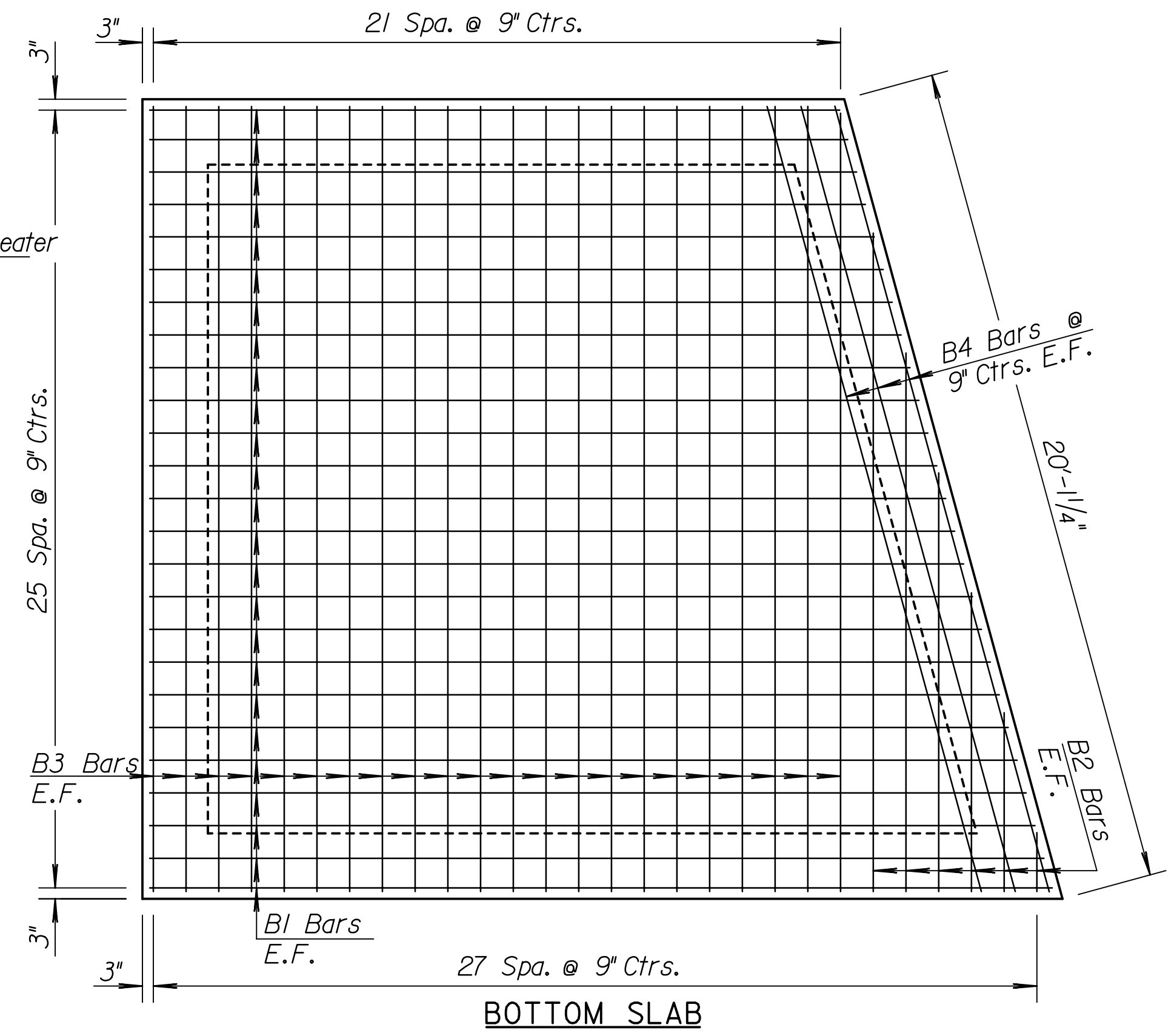
1. Use 4000 p.s.i. compressive strength concrete throughout. All exposed edges shall be finished with an edging tool. All Reinforcing shall conform to ASTM A615, Grade 60.
2. In general, pipes will enter and leave manhole at various positions. Where possible bend bars around pipes.
3. Manhole opening shall be placed to afford easy access to equipment. Top reinforcing bars shall be adjusted accordingly.
4. All castings shall be cast iron.
5. Design Loading is AASHTO H 20-44.
6. All reinforcing to have 2" edge and end clearance unless noted.
7. A-LOK seals to be placed around all pipes.



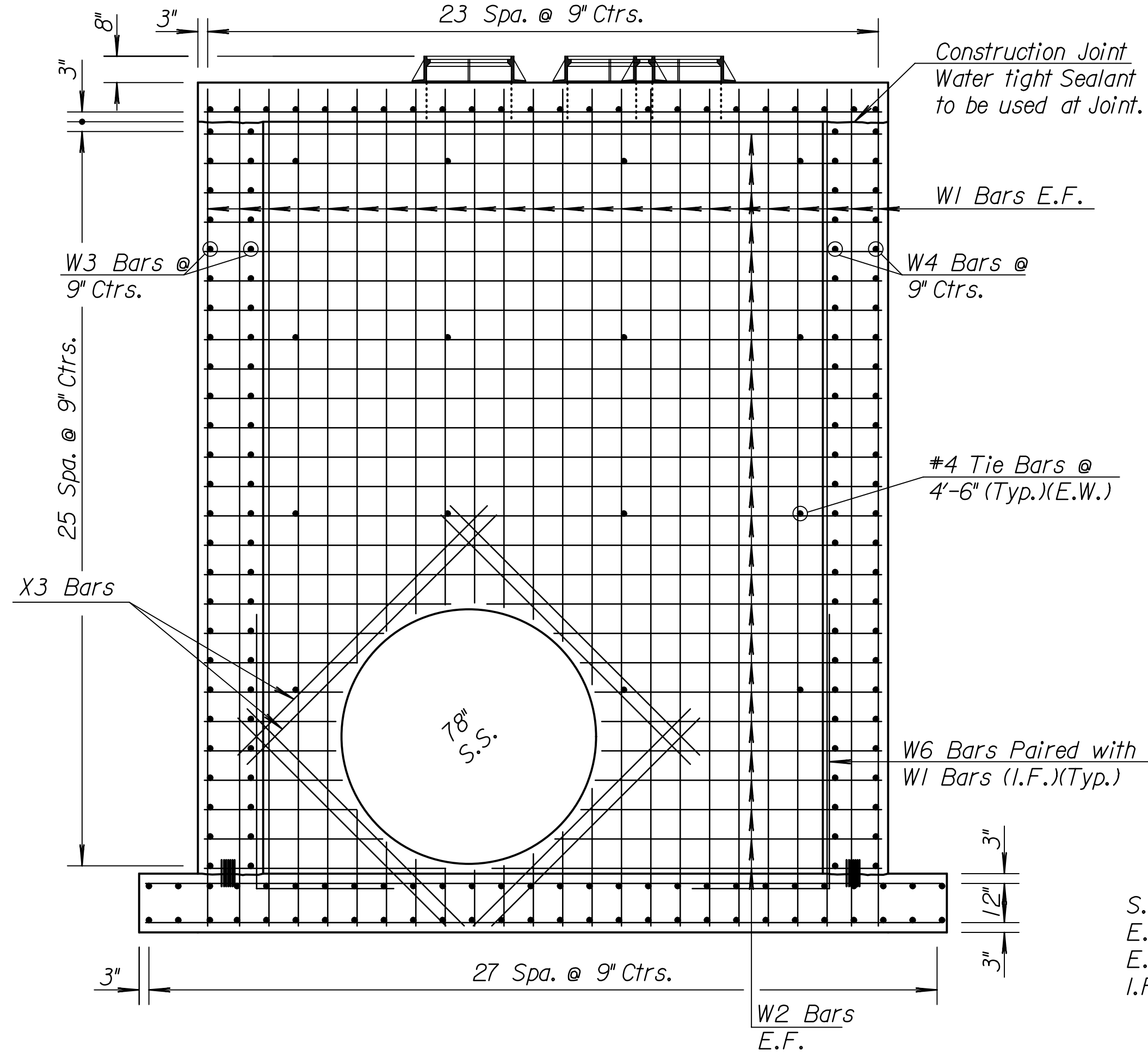
ADDITIONAL REINFORCING AT WALL CIRCULAR OPENINGS



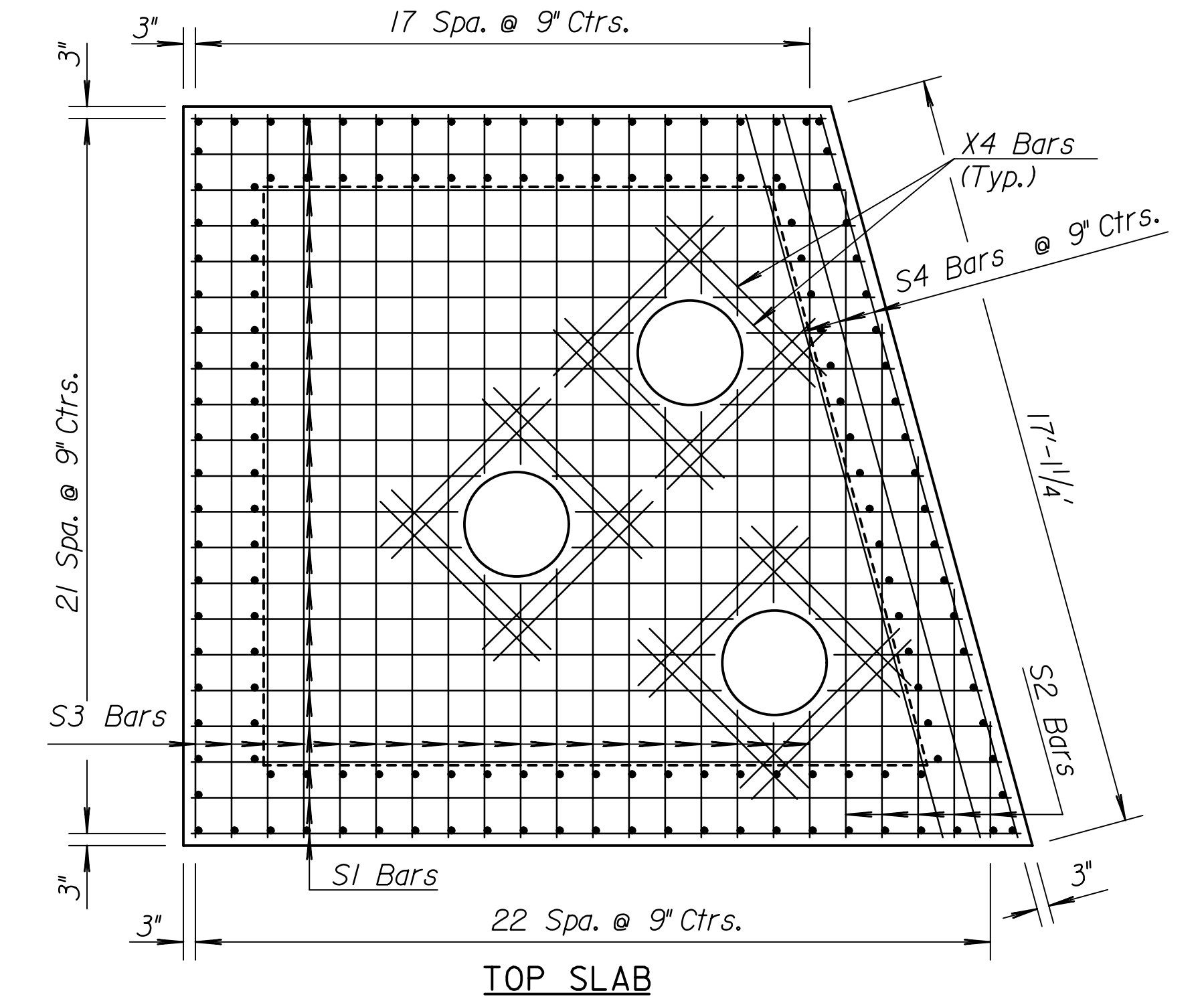
SECTION A-A



BOTTOM SLAB



SECTION B-B

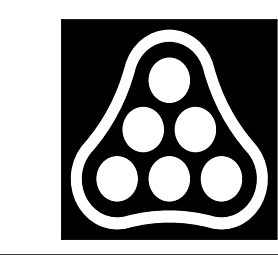


TOP SLAB

LEGEND

- S.S. - Sanitary Sewer
- E.F. - Each Face
- E.W. - Each Way
- I.F. - Inside Face

Plotted By: wil  
Date: 3/2/2010 10:20:42 AM  
FILE: I:\2007\07600-00\07600-001-CS-SS1.dgn



No.	Revision	By	Date
RELOCATION OF SANITARY SEWER NO. 23 PHASE 2: KELLOGG/GROVE TO PANNEE/1-135			
3-PIPE SIPHON STRUCTURE #1			
JAMES L. ARMOUR, P.E. - CITY ENGINEER CITY OF WICHITA PROJECT NO. 468-84375			
<b>Professional Engineering Consultants, P.A.</b>			
303 S. TOPEKA • WICHITA, KANSAS 67202 316-262-2691 • FAX 316-262-3003			
Designed by	RJM	Job No.	35-07600-001
Drawn by	CP	Date	AUGUST 2008
			Sht. 37 of 75