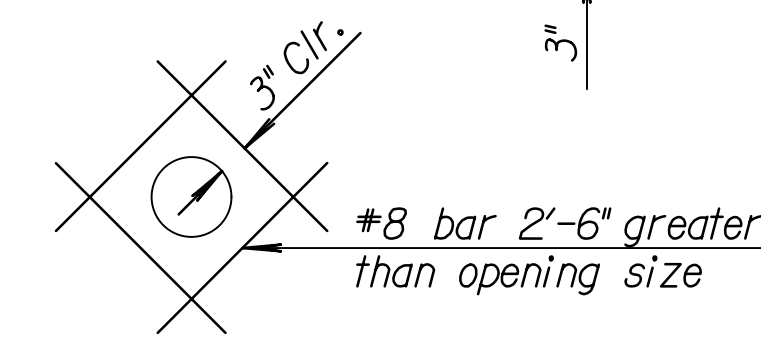
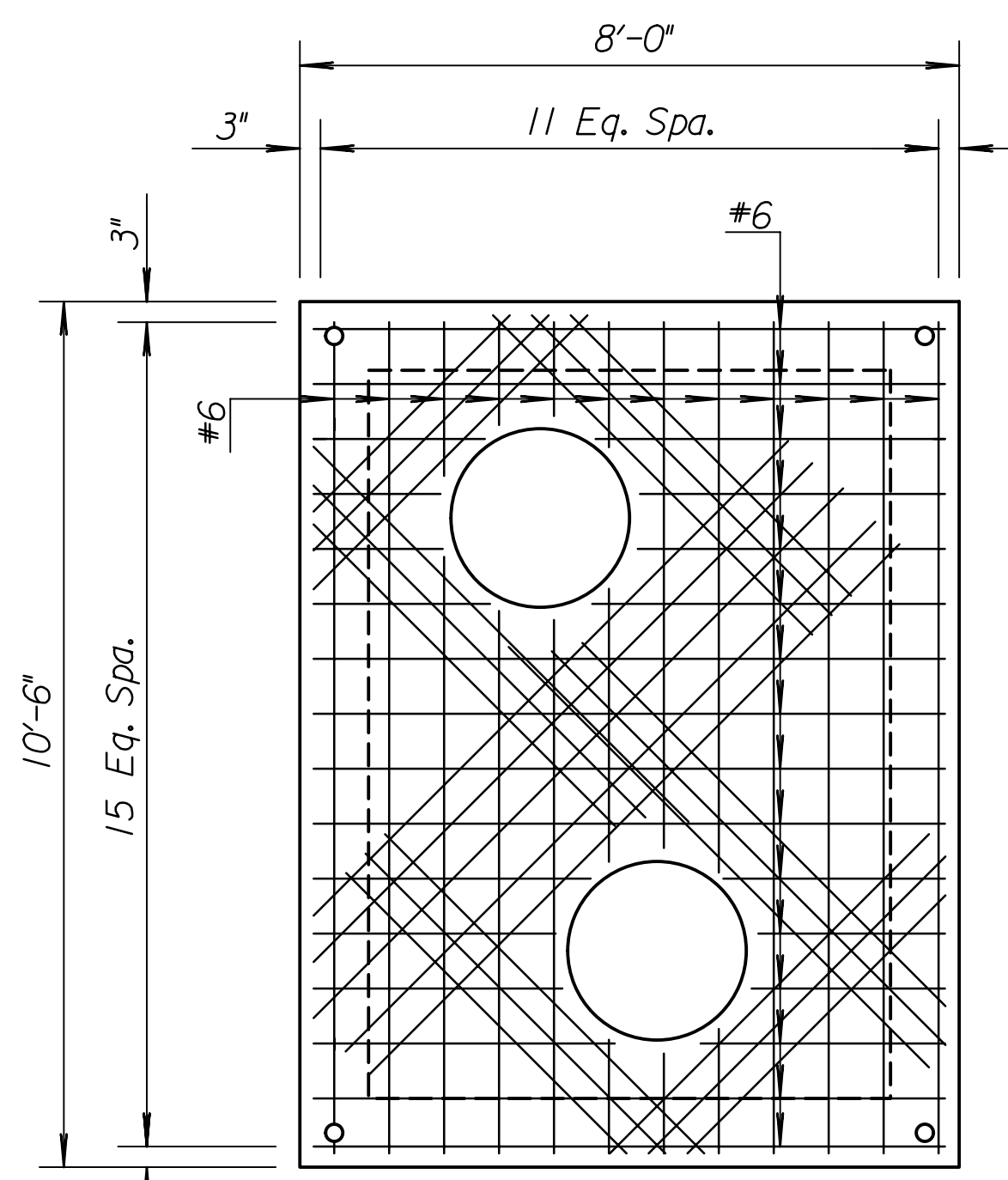


PLAN

Drill and grout 1'-0" #6 bar 6" into walls at referenced locations. Final grout 2 1/2" diameter holes with an approved mixture.

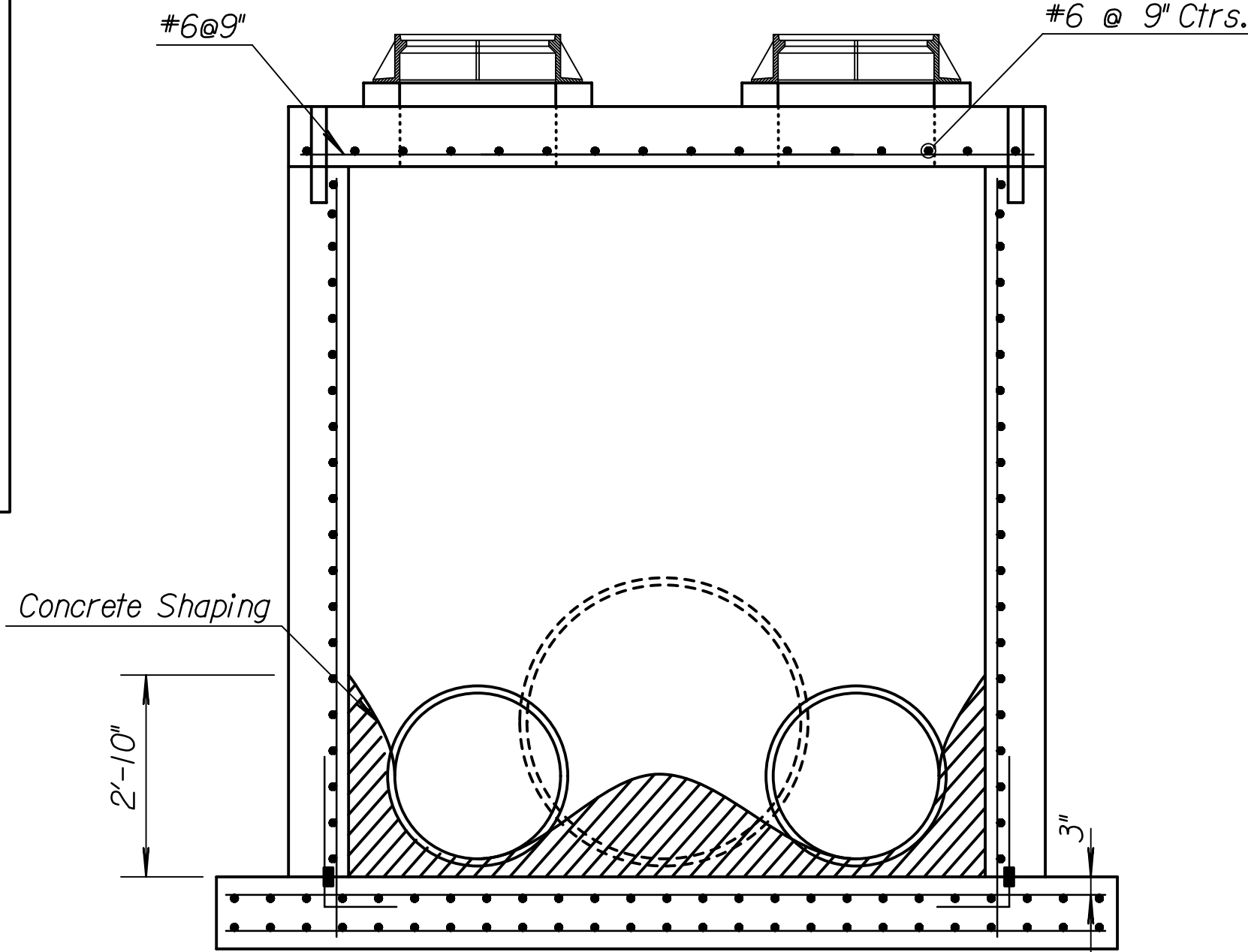


ADDITIONAL REINFORCING AT WALL CIRCULAR OPENINGS

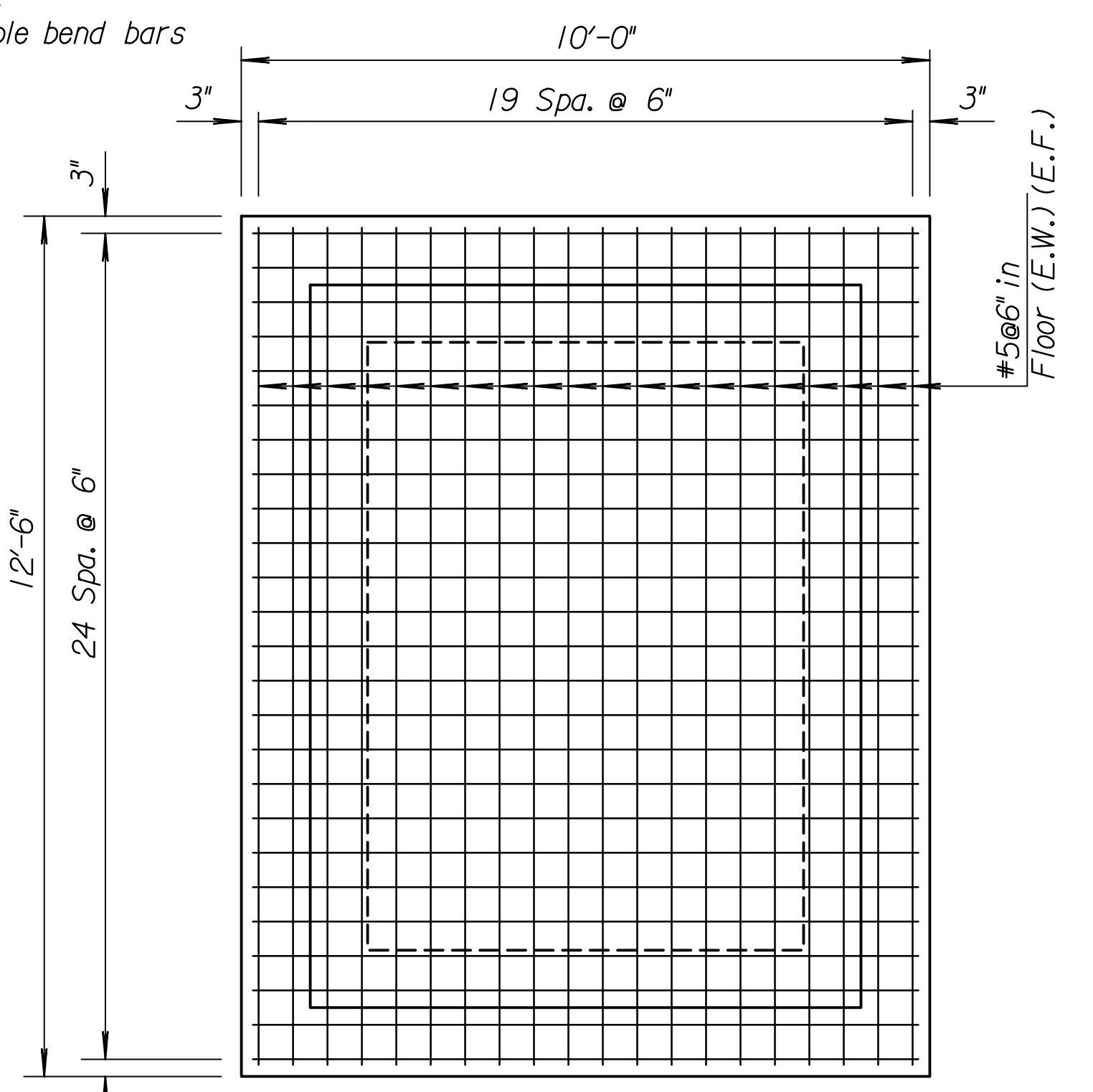


TOP SLAB

- GENERAL NOTES
1. Use 4000 p.s.i. compressive strength concrete throughout. All exposed edges shall be finished with an edging tool. All Reinforcing shall conform to ASTM A615, Grade 60.
  2. In general, pipes will enter and leave manhole at various positions. Where possible bend bars around pipes.
  3. Manhole opening shall be placed to afford easy access to equipment. Top reinforcing bars shall be adjusted accordingly.
  4. All castings shall be cast iron.
  5. Design Loading is AASHTO H 20-44.
  6. All reinforcing to have 2" edge and end clearance unless noted.
  7. A-LOK seals to be placed around all pipes.
  8. All reinforced steel shall be #5 bars with a 6" center to center spacing, unless otherwise noted.



SECTION VIEW C-C



BOTTOM SLAB

DIMENSION TABLE				
	A	B	±C	±D
STRUCTURE NO. 1	15'-10 1/8"	13'-8 1/8"	8'19"44"	90°0'0"
STRUCTURE NO. 3	15'-5 3/16"	13'-3 3/16"	90°0'0"	93°0'22"
STRUCTURE NO. 5	15'-3"	13'-1"	90°0'0"	91°45'16"

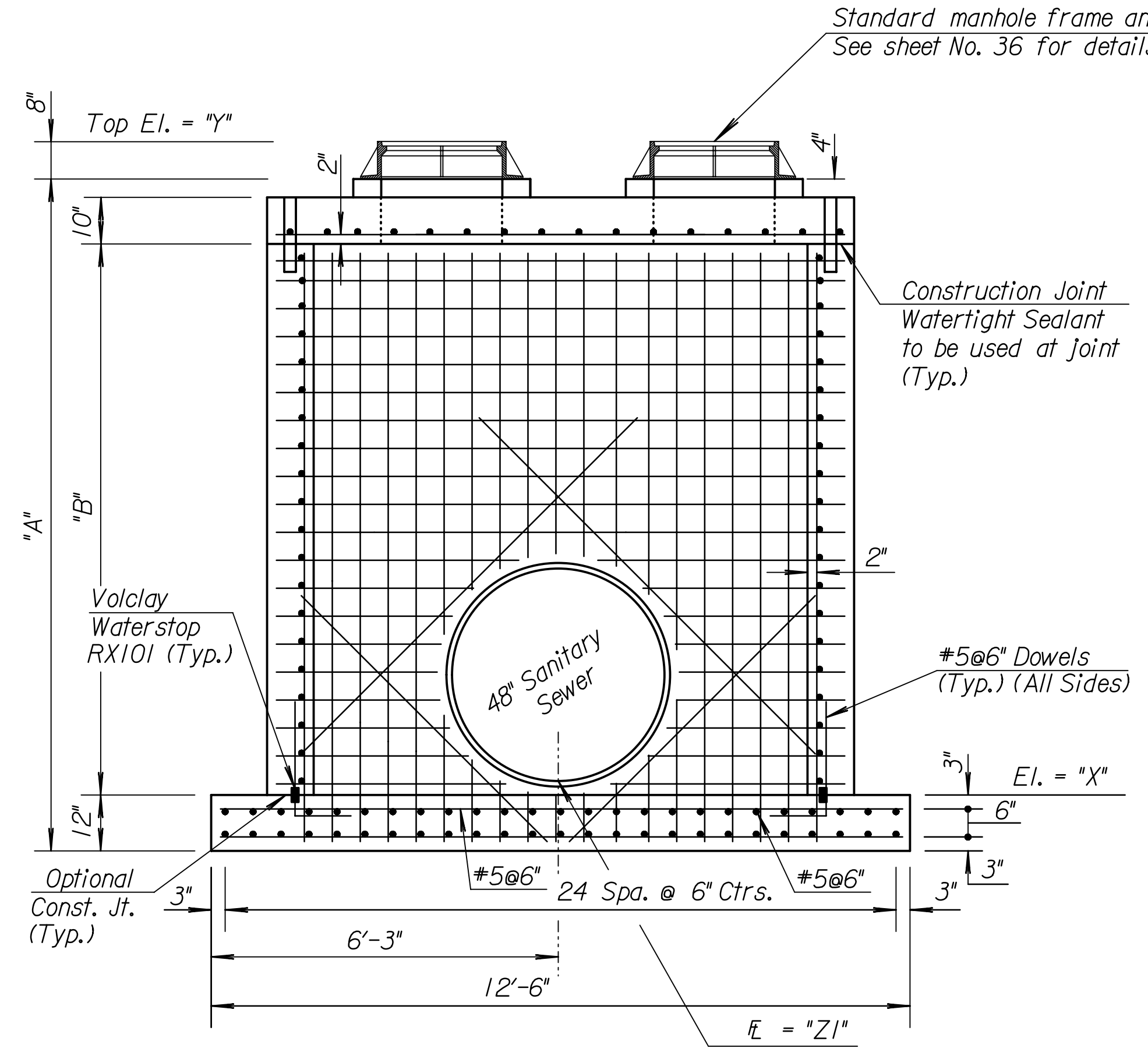
ELEVATION TABLE				
	X	Y	Z1	Z2
STRUCTURE NO. 1	1268.79	1284.30	1269.04	1269.04
STRUCTURE NO. 3	1270.60	1285.70	1270.85	1270.85
STRUCTURE NO. 5	1271.39	1286.30	1271.64	1271.64

COORDINATE TABLE #1		
	NORTHING	EASTING
STRUCTURE NO. 1	1673355.5213	1656687.8709
STRUCTURE NO. 3	1675843.3892	1656666.8711
STRUCTURE NO. 5	1676498.6784	1656656.7092

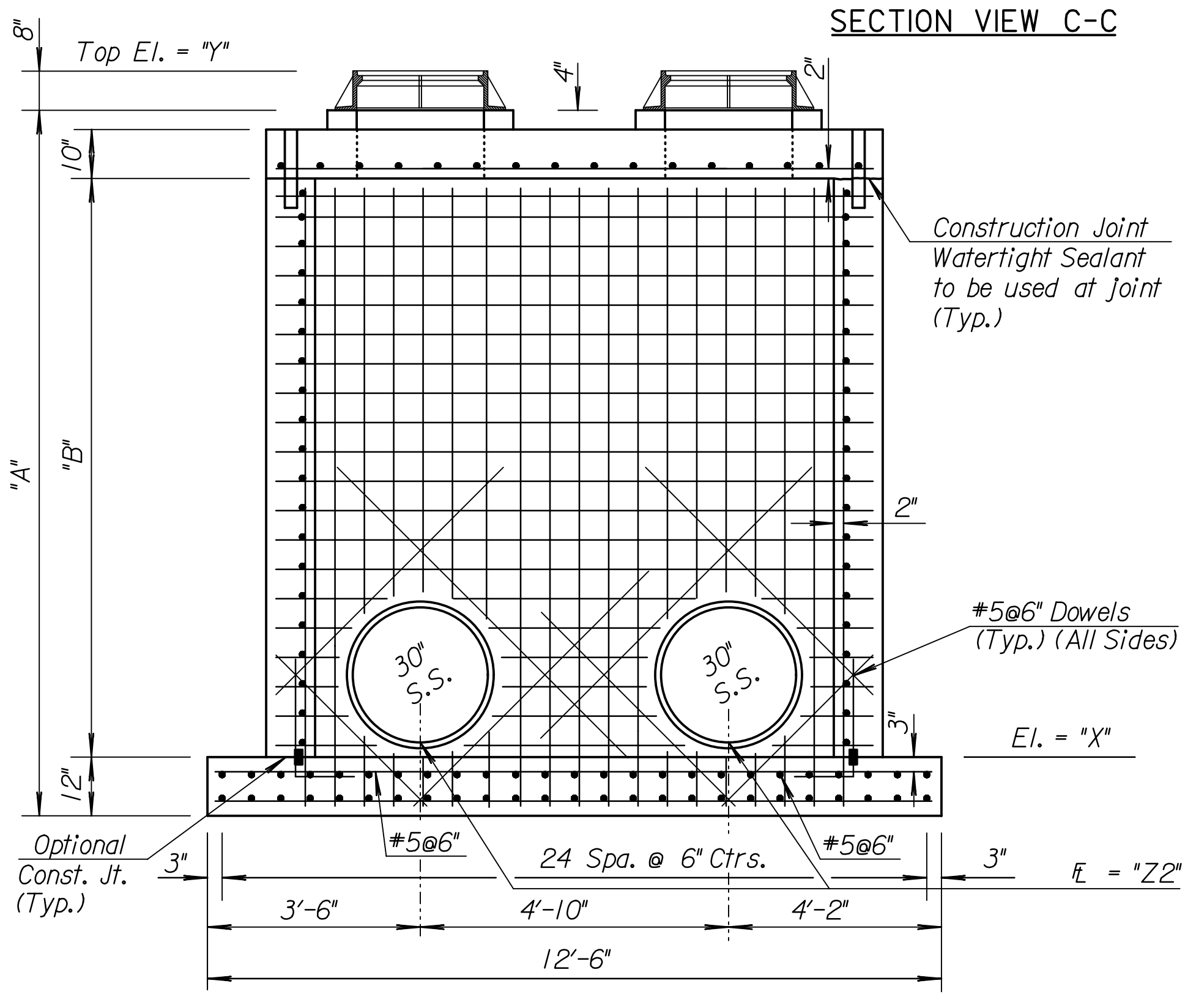
COORDINATE TABLE #2		
	NORTHING	EASTING
STRUCTURE NO. 1	1673356.8161	1656698.2907
STRUCTURE NO. 3	1675843.5520	1656677.3698
STRUCTURE NO. 5	1676498.8412	1656667.2080

LEGEND

- S.S. - Sanitary Sewer
- E.F. - Each Face
- E.W. - Each Way
- I.F. - Inside Face

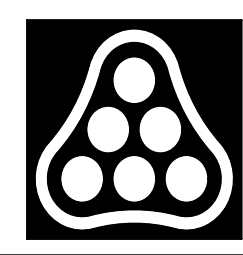


SECTION VIEW A-A



SECTION VIEW B-B

Plotted By: will Date: 3/2/2010 10:26:09 AM  
 FILE: I:\2007\07600-001\07600-001-CS-SSD0135.dgn



No.	Revision	By	Date
RELOCATION OF SANITARY SEWER NO. 23 PHASE 2: KELLOGG/GROVE TO PANNEE/1-135 <b>2- PIPE SIPHON STRUCTURE DETAILS NO'S 1, 3, 5</b> JAMES L. ARMOUR, P.E. - CITY ENGINEER CITY OF WICHITA PROJECT NO. 468-84375 <b>Professional Engineering Consultants, P.A.</b> 303 S. TOPEKA • WICHITA, KANSAS 67202 316-262-2691 • FAX 316-262-3003			
Designed by	RJM	Job No.	35-07600-001
Drawn by	RJM	Date	AUGUST 2008

Sht. 41 of 75