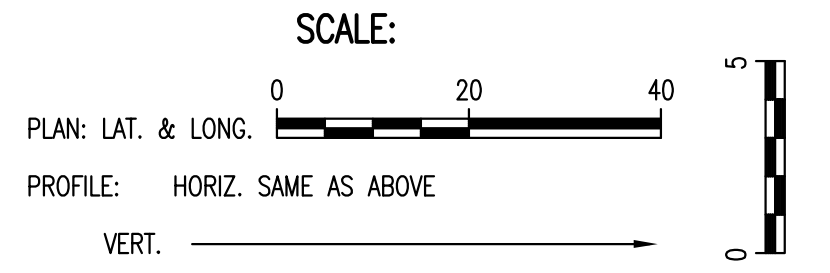
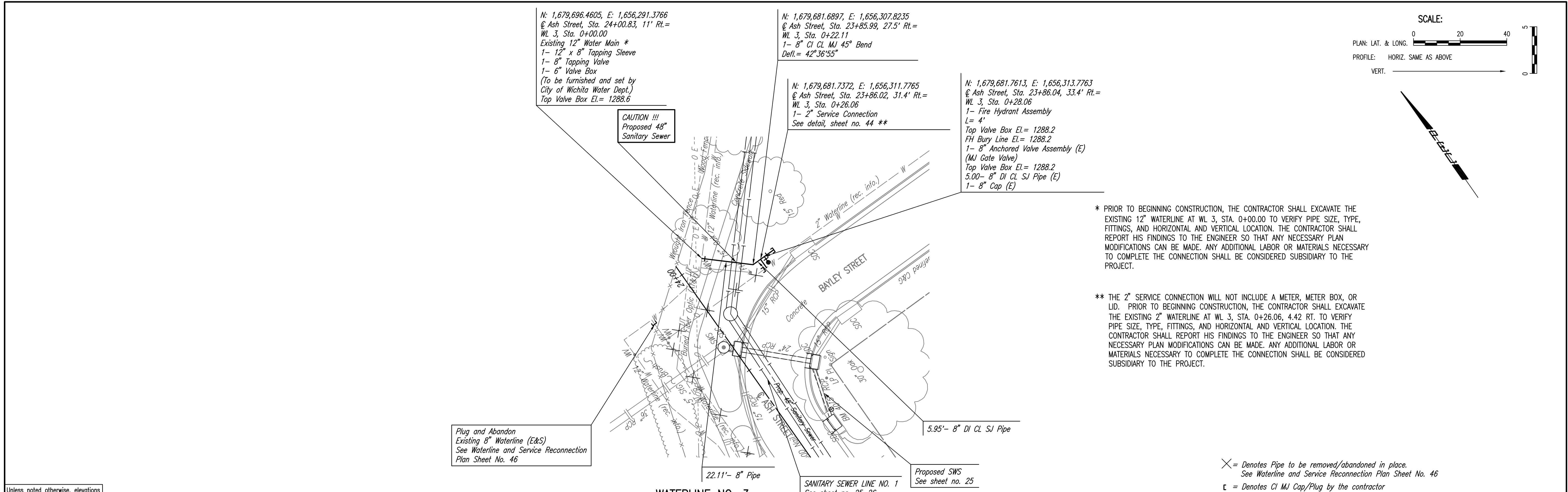


PLAN	CHECKED	BY	DATE
	CHECKED		

PROFILE	CHECKED	BY	DATE
	CHECKED		

Saved: 03-09-2010 3:22:12 PM by: CSL  
 Plot Scale: 1:20 03-09-2010 4:24:15 PM by: CSL  
 03-2007-07600-001-Phase 2-07600-001-WIPF02



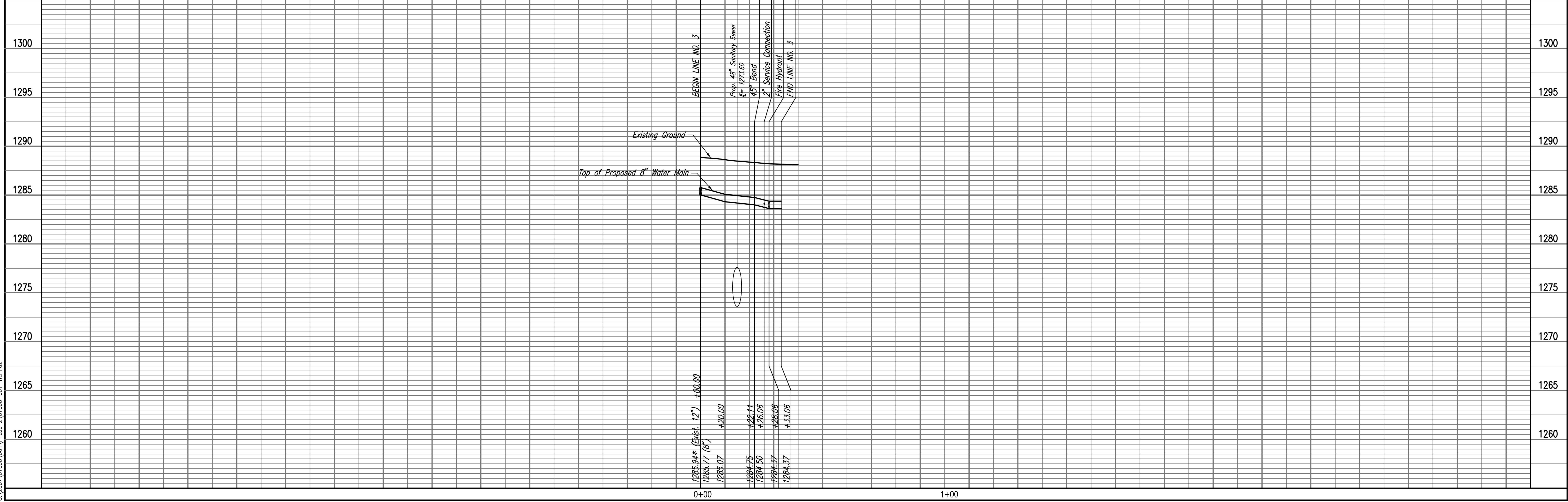
\* PRIOR TO BEGINNING CONSTRUCTION, THE CONTRACTOR SHALL EXCAVATE THE EXISTING 12" WATERLINE AT WL 3, STA. 0+00.00 TO VERIFY PIPE SIZE, TYPE, FITTINGS, AND HORIZONTAL AND VERTICAL LOCATION. THE CONTRACTOR SHALL REPORT HIS FINDINGS TO THE ENGINEER SO THAT ANY NECESSARY PLAN MODIFICATIONS CAN BE MADE. ANY ADDITIONAL LABOR OR MATERIALS NECESSARY TO COMPLETE THE CONNECTION SHALL BE CONSIDERED SUBSIDIARY TO THE PROJECT.

\*\* THE 2" SERVICE CONNECTION WILL NOT INCLUDE A METER, METER BOX, OR LID. PRIOR TO BEGINNING CONSTRUCTION, THE CONTRACTOR SHALL EXCAVATE THE EXISTING 2" WATERLINE AT WL 3, STA. 0+26.06, 4.42 RT. TO VERIFY PIPE SIZE, TYPE, FITTINGS, AND HORIZONTAL AND VERTICAL LOCATION. THE CONTRACTOR SHALL REPORT HIS FINDINGS TO THE ENGINEER SO THAT ANY NECESSARY PLAN MODIFICATIONS CAN BE MADE. ANY ADDITIONAL LABOR OR MATERIALS NECESSARY TO COMPLETE THE CONNECTION SHALL BE CONSIDERED SUBSIDIARY TO THE PROJECT.

✕ = Denotes Pipe to be removed/abandoned in place.  
 See Waterline and Service Reconnection Plan Sheet No. 46

⌊ = Denotes CI MJ Cap/Plug by the contractor  
 (Subsidiary to "Site Clearing")

Unless noted otherwise, elevations shown are top of pipe



Professional Engineering Consultants, P.A.  
 603 S. TOPICKA AVENUE, SUITE 100, WICHITA, KANSAS 67202  
 316-262-2691 • FAX 316-262-3003

Designed By: MDK, EJB  
 Drawn By: CSL, JAN

Job No.: 35-07600-001  
 Date: AUGUST 2008

RELOCATION OF SANITARY SEWER NO. 23  
 PHASE 2: KELLOGG GROVE TO PANWEE/1-135  
**WATERLINE NO. 3**

JAMES L. ARMOUR, P.E. - CITY ENGINEER  
 CITY OF WICHITA PROJECT NO. 468-84375

Sheet 48 of 75