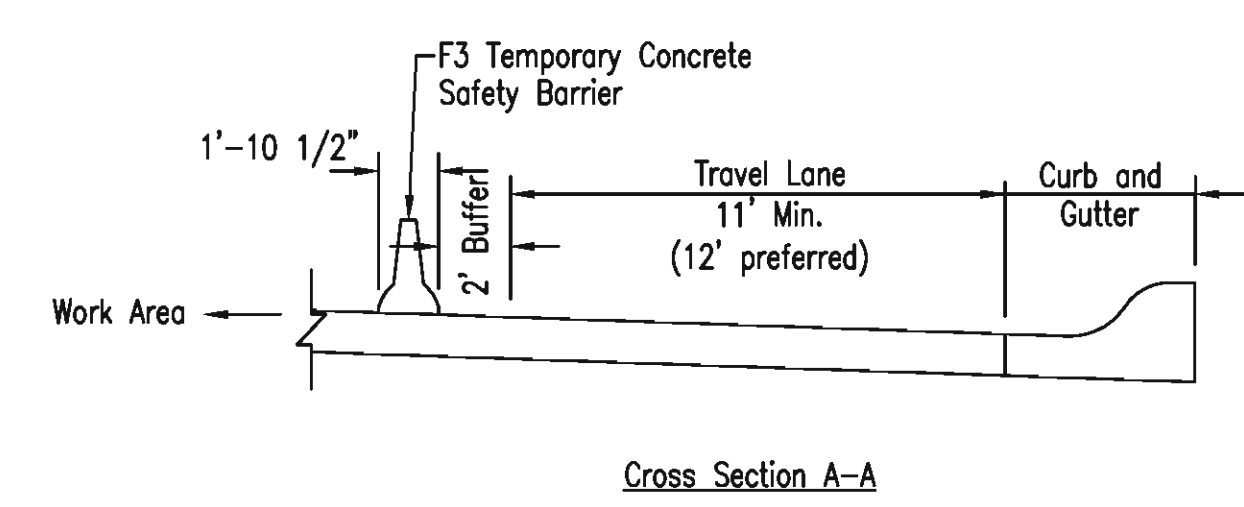


GENERAL NOTES

ONE OR MORE PORTABLE CHANGEABLE MESSAGE SIGNS MAY BE INSTALLED BY THE CONTRACTOR DURING STAGE 2. FINAL LOCATION OF THESE SIGNS AND THE MESSAGE(S) THEY WILL DISPLAY SHALL BE COORDINATED WITH THE KANSAS DEPARTMENT OF TRANSPORTATION (KDOT). ALL TRAFFIC CONTROL SHALL BE INSTALLED PRIOR TO THE COMMENCEMENT OF STAGE CONSTRUCTION ACTIVITY.

BENJAMIN KOERNER, UTILITY COORDINATOR
 KANSAS DEPARTMENT OF TRANSPORTATION, DISTRICT V, SEDGWICK COUNTY
 3200 EAST 45TH STREET NORTH
 WICHITA, KS. 67220-1436
 TELEPHONE: (316)-744-1271

ALL TRAFFIC CONTROL DEVICES AND INSTALLATION OR USE THEREOF SHALL COMPLY WITH THE MANUAL ON UNIFORM TRAFFIC CONTROL DEVICES FOR STREETS AND HIGHWAYS (LATEST EDITION), AND TRAFFIC CONTROL DEVICES SHALL BE NCHRP 350 COMPLIANT WITH RESPECT TO CRASHWORTHINESS REQUIREMENTS. THE LUMP SUM PRICE BID FOR THE BID ITEM "TRAFFIC CONTROL" SHALL BE FULL COMPENSATION FOR PROVIDING, INSTALLING, MOVING, REPLACING, MAINTAINING, REMOVING, AND CLEANING ALL TRAFFIC CONTROL DEVICES AS REQUIRED OR AS DIRECTED BY THE ENGINEER. IT SHALL ALSO INCLUDE THE ADDITION OF ANY DEVICES DEEMED NECESSARY BY THE ENGINEER WHETHER SPECIFICALLY MENTIONED OR NOT.



- LEGEND**
- ⊕ Channelizing Device (See TE702)
 - ⊕ Traffic Control Sign
 - ➔ Direction of Traffic
 - ▨ Work Area
 - ▤ Type III Barricade
 - ▬ Temporary Concrete Safety Barrier (Type F3)

No.	Revision	By	Date
RELOCATION OF SANITARY SEWER NO. 23 PHASE 2: KELLOGG/GROVE TO PAWNEE/I-135 TRAFFIC CONTROL PLAN - STAGE 2 JAMES L. ARMOUR, P.E. - CITY ENGINEER CITY OF WICHITA PROJECT NO. 468-84375 Professional Engineering Consultants, P.A. 303 S. TOPEKA • WICHITA, KANSAS 67202 316-262-2691 • FAX 316-262-3003			
Designed by	DRM	Job No.	35-07600-001
Drawn by	CSL, JAN	Date	AUGUST 2008

Sht. 62 of 75

Served: 03-04-2010 2:21:00 PM by JAN
 Plot Scale: 1/8" = 1'-0" 03-05-2010 8:36:17 AM by CSL
 G:\2007\07600\001\Phase 2\07600-001-C-Traffic Control Plan2