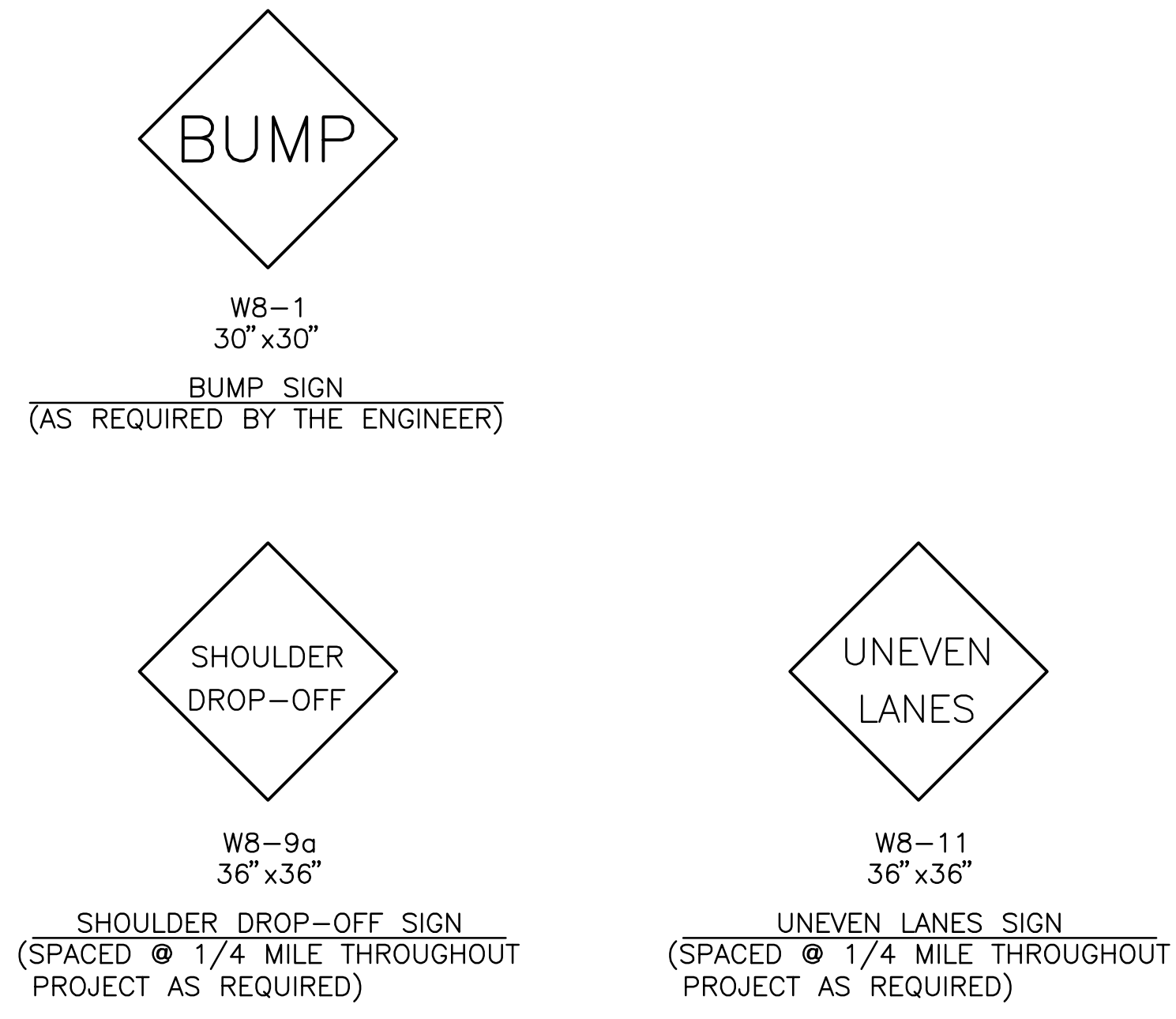


LIST OF TRAFFIC CONTROL DEVICES *

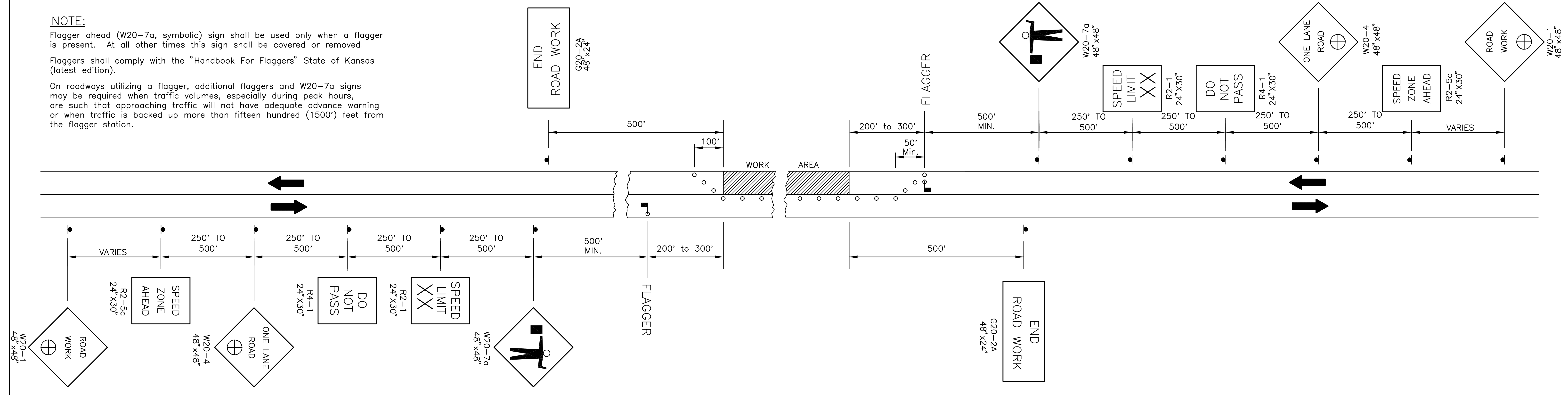
MUTCD DEVICE NO.	NO.	FLASHERS		REMARKS	DELINEATORS & CHANNELIZATION DEVICES				
		TYPE A	TYPE B		DEVICE	NO.	SIZE	FLASHERS TYPE A TYPE B TYPE C	
W20-1	2				BARRICADES				
R2-5c	2				TYPE III				
W20-4	2				TYPE II				
R4-1	2				TYPE I				
R2-1	2				DRUMS				
W20-7a	2				CONES				
G20-2A	2				TUBES				
W8-9a					VERTICAL PANELS				
W8-11					SINGLE				
W8-1					BACK TO BACK				
					PAVEMENT MARKING	WHITE	YELLOW		
					4" BROKEN (Lin. Ft.)				
					4" SOLID (Lin. Ft.)				
					TEMPORARY STRIPING (Line Mile)				

* FOR INFORMATION ONLY

SEE SHEET NO. _____ FOR TRAFFIC CONTROL NOTES



NOTE:
 Flagger ahead (W20-7a, symbolic) sign shall be used only when a flagger is present. At all other times this sign shall be covered or removed.
 Flaggers shall comply with the "Handbook For Flaggers" State of Kansas (latest edition).
 On roadways utilizing a flagger, additional flaggers and W20-7a signs may be required when traffic volumes, especially during peak hours, are such that approaching traffic will not have adequate advance warning or when traffic is backed up more than fifteen hundred (1500') feet from the flagger station.



- XX Speed To Be Determined By The ENGINEER.
- ⊕ Distance To Be Determined By The ENGINEER.
- Channelization devices.

TRAFFIC CONTROL PLAN
FOR HANDLING ONE-LANE TRAFFIC THROUGH WORK AREA (FLAGGER)

TRAFFIC CONTROL PLAN				
FOR ONE LANE CLOSED ON A TWO-LANE ROADWAY (FLAGGER)				
T.C. NO. 3.0				
PREPARED BY SEDGWICK COUNTY BUREAU OF PUBLIC WORKS HIGHWAY DIVISION				
DAVID C. SPEARS, P.E.			DIRECTOR/COUNTY ENGINEER	
REVISED	SCALE	DESIGNED	TRACED	CHECKED
		DATE		
		PLANFILE TC-3-0	TOTAL SHEETS 75	

12/95	CHG G20-2 to G20-2A 60"x24"	DRS/
12/94	CHG W8-9a, W20-1, G20-2 & ADD W8-11	DRS/

Saved: 05-10-11 1:11:30 PM by: jay.mah
 C:\Users\jmay\Documents\35-07600-001\07217\35-07600-001-06.dwg
 Plot: 05-10-11 1:11:30 PM by: jay.mah
 C:\Users\jmay\Documents\35-07600-001\07217\35-07600-001-06.dwg