

SANITARY SEWER EXTENSION TO SERVE N 1/2 NE 1/4 SW 1/4 SE 1/4 SEC. 32-26-1E PROJECT NO. 2020 PPS (607861)

GENERAL NOTES

- Contractor will be required to provide a minimum advance notice of seventy-two (72) hours to utility companies prior to starting any excavation as follows:

Kansas One-Call	687-2470 or 811
-----------------	-----------------
- The Contractor must notify the following in case of an emergency:

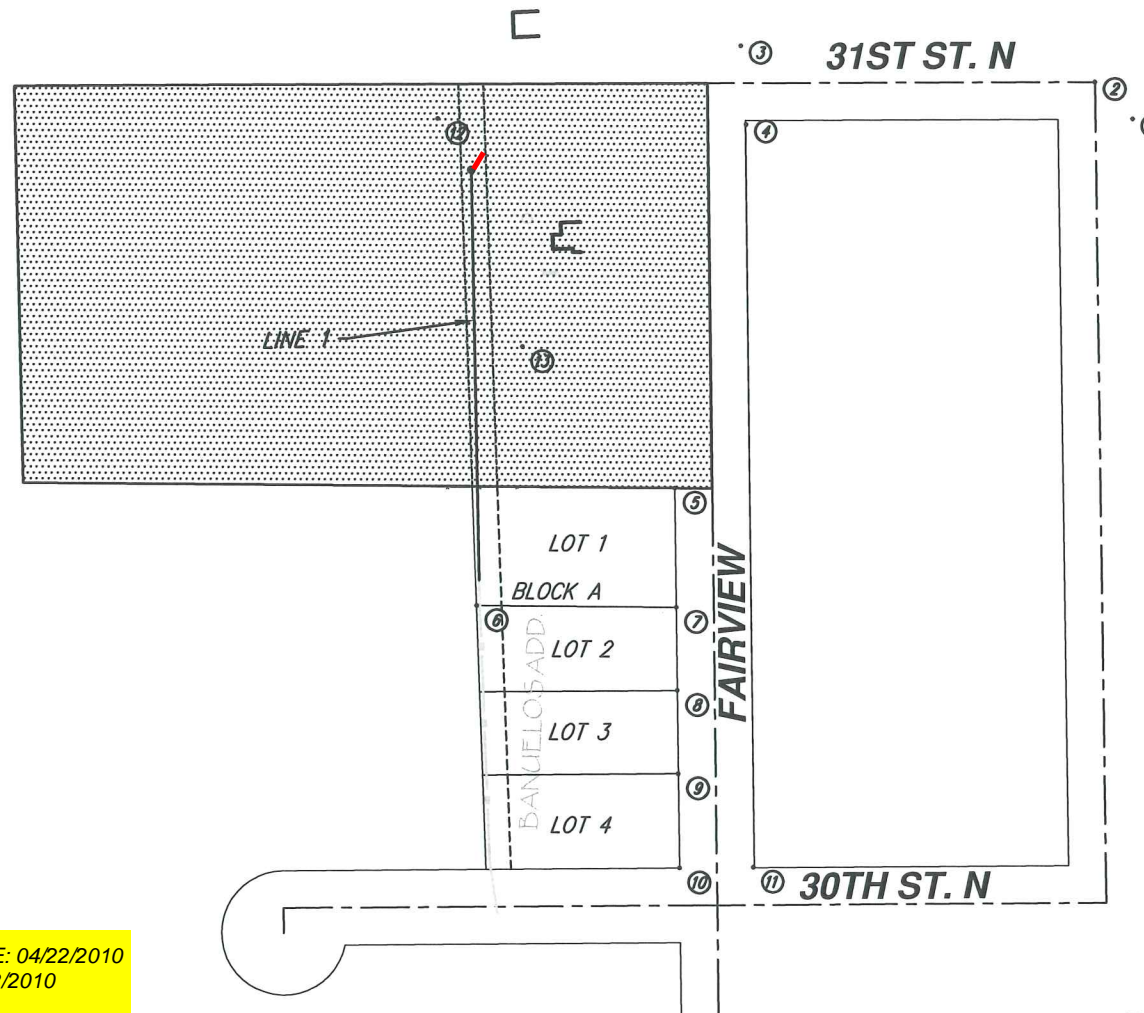
Cox Communications	260-7204
Kansas Gas Service	832-3126
Westar	383-8600
Aquila Net	1-800-303-0357
AT&T	1-800-286-8313
City of Wichita Water Utilities	262-6000
- Existing utilities and their location, as shown on the plans, represent the best information obtainable for design. Location information has been obtained from the various utility companies and is either from company record drawings or company-provided field locations. The Contractor will be required to work around existing utilities within the right-of-way which do not conflict with proposed construction.
- The Contractor shall give all property owners and/or tenants of developed property directly abutting the construction of this project a minimum of ten (10) days advance notice prior to start of construction.
- The Contractor shall be responsible for preserving property irons. The Contractor will be required to re-establish any property irons which are damaged or destroyed by his construction operations. Such irons shall be re-established by a licensed land surveyor in accordance with state laws.
- Construction of this project will be subject to all provisions and requirements of the "Construction of Infrastructure by Private Contract" and "Standard Specifications for the Construction of City Projects", available from the City of Wichita Public Works Department.
- Traffic will not be affected by the construction of this project.
- Trees in conflict with construction shall be removed or trimmed as necessary.

BENCHMARK

BENCHMARK: CHISELED "X" ON SOUTH RIM OF A SANITARY SEWER MANHOLE 118' WEST, NORTHWEST OF THE NORTHWEST CORNER OF HOUSE #3115 N. FAIRVIEW ELEVATION = 1313.82 (NAVD88)

INDEX OF SHEETS

- SANITARY SEWER COVER
- SANITARY SEWER PLAN/PROFILE
- SPECIAL SHALLOW MANHOLE DETAIL

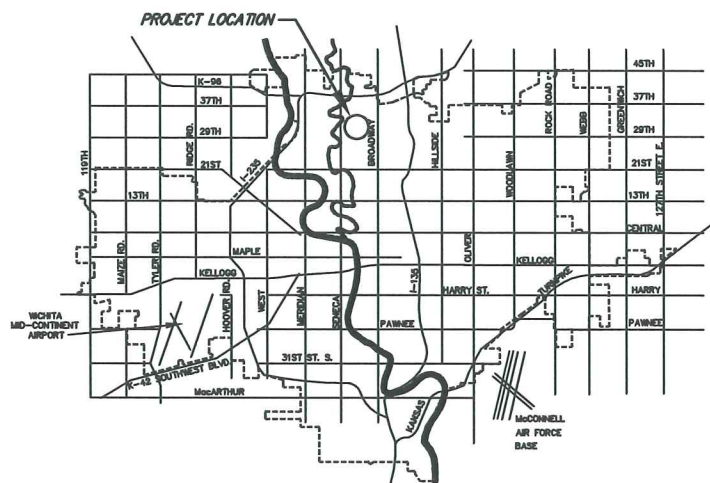


APPROVED AS NOTED
BY CITY ENGINEER OF WICHITA

Sanitary Sewers Julianne Kellman
 Storm Sewers N/A 2-26-10
 Driveway Approaches N/A
 Water Mains N/A
 Paving N/A

NOTE TO CONTRACTORS

Inspection and testing for this project are to be provided by a Licensed Consulting Engineering Firm under contract with the Owner/Developer. Said inspection to be in accordance with the City of Wichita standard construction engineering practices and certified by a Licensed Professional Engineer. No work shall be performed in dedicated easements or public right-of-way by the Contractor without such inspection, nor shall any work be commenced without written authorization by the City Engineer.



VICINITY MAP

RELEASE DATE: 04/22/2010
APRosas: 04/22/2010

AS-BUILT PLANS:

CONTRACTOR: McCULLOUGH
EXCAVATION

INSPECTOR: TONY YOUNG
RUGGLES & BOHM, P.A.

PDF BY: MATT PEREZ 4-14-10
RUGGLES & BOHM, P.A.

IMPROVEMENT DISTRICT

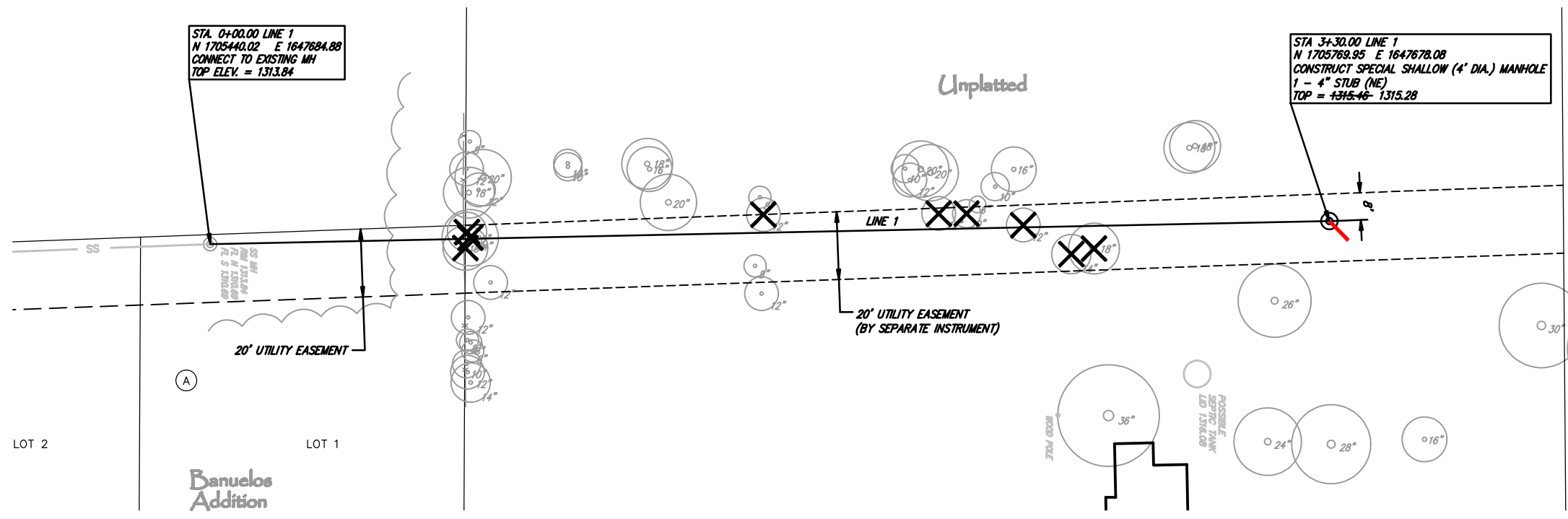
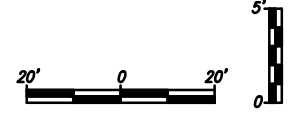


COORDINATE CONTROL TABLE			
CONTROL NO.	DESCRIPTION	NORTHING	EASTING
1	SE CORNER WELLINGTON & 31ST STREET N (SM 3/4" IP)	1705813.24	1648211.08
2	CL OF WELLINGTON & 31ST STREET N (SM CONC MAN)	17058042.83	1648100.62
3	NE CORNER FAIRVIEW & 31ST STREET N (SM 1IN IP)	1705870.61	1647893.97
4	SE CORNER FAIRVIEW & 31ST STREET N (SM 1/2 IP)	1705807.24	1647898.43
5	NE CORNER LOT 1, BLOCK A, BANUELOS ADDITION (SM ARM 5/8)	1705514.54	1647841.84
6	SW CORNER LOT 1, BLOCK A, BANUELOS ADDITION (SM ARM 1/2)	1705419.45	1647882.89
7	SE CORNER LOT 1, BLOCK A, BANUELOS ADDITION (SM ARM 1/2)	1705418.72	1647843.13
8	SE CORNER LOT 2, BLOCK A, BANUELOS ADDITION (SM ARM 1/2)	1705351.87	1647844.04
9	SE CORNER LOT 3, BLOCK A, BANUELOS ADDITION (SM 1/2 REBAR)	1705284.89	1647844.83
10	SE CORNER LOT 4, BLOCK A, BANUELOS ADDITION (SM 3/4 REBAR)	1705208.17	1647846.02
11	NE CORNER FAIRVIEW & 30TH STREET N (SM 1IN IP)	1705210.10	1647905.36
12	APPROX. 220' W OF FAIRVIEW & 31ST STREET N (STA 1/2 REBAR)	1705810.98	1647850.93
13	APPROX. 115' N OF LOT 1, BLOCK A, BANUELOS ADD (STA 1/2 REBAR)	1705827.78	1647718.30

CITY OF WICHITA, KANSAS
JAMES L. ARMOUR, P.E. - CITY ENGINEER



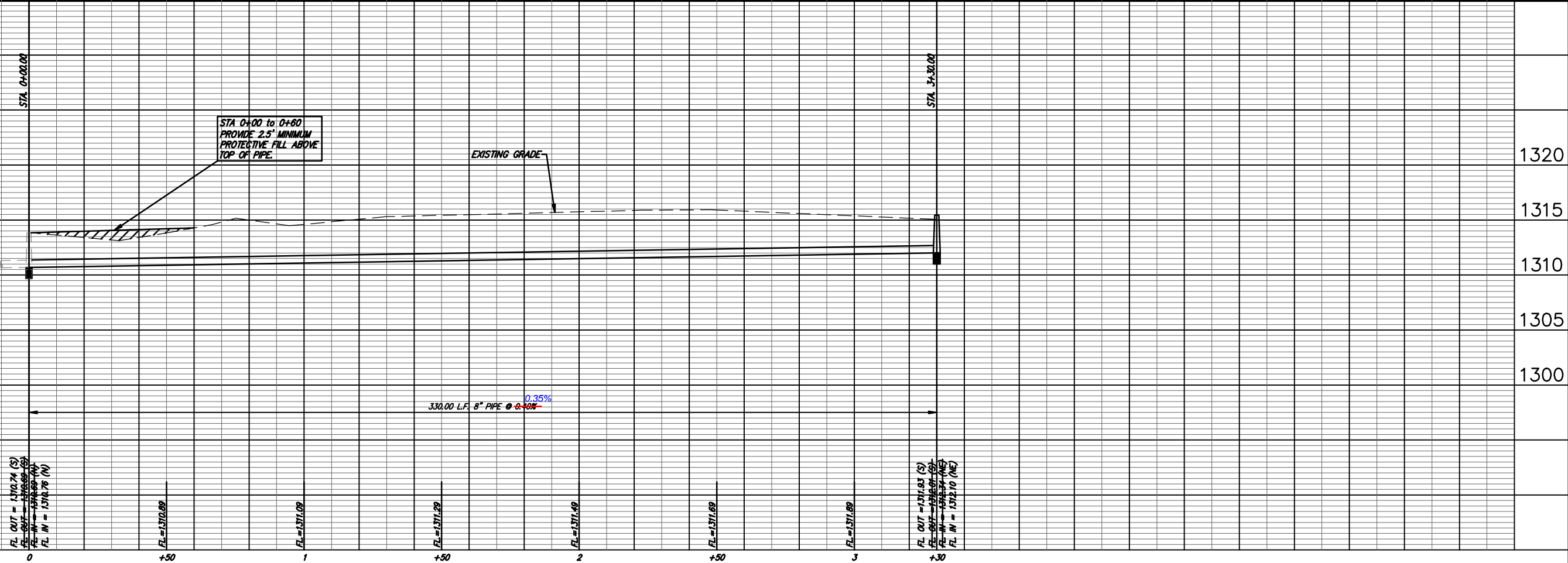
Ruggles & Bohm, P.A.
Engineering, Surveying, Land Planning
924 North Main (316) 264-8008
Wichita, Kansas 67203 (316) 264-4621 fax
www.rbkansas.com E-mail: info@rbkansas.com



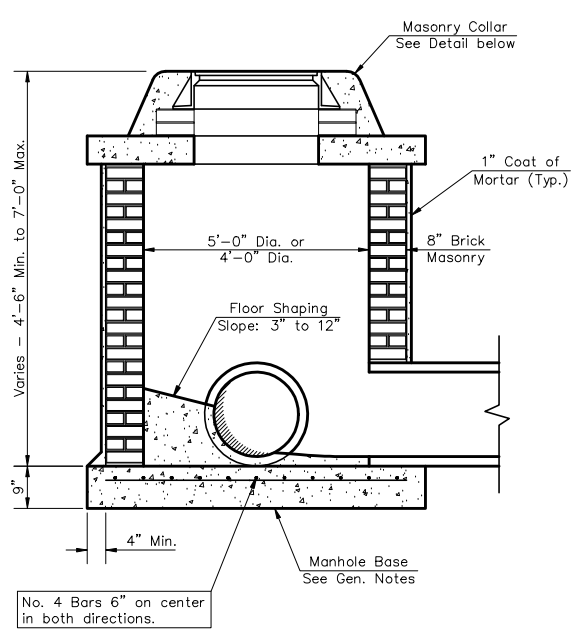
LOT 2 LOT 1

Banuelos Addition

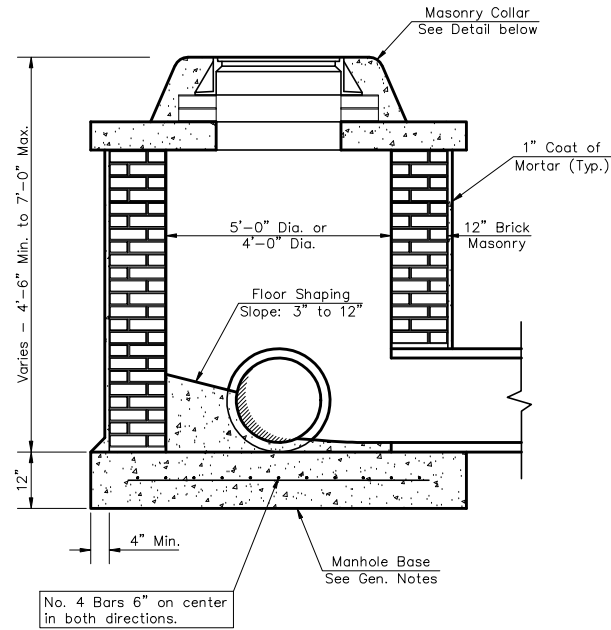
LINE 1



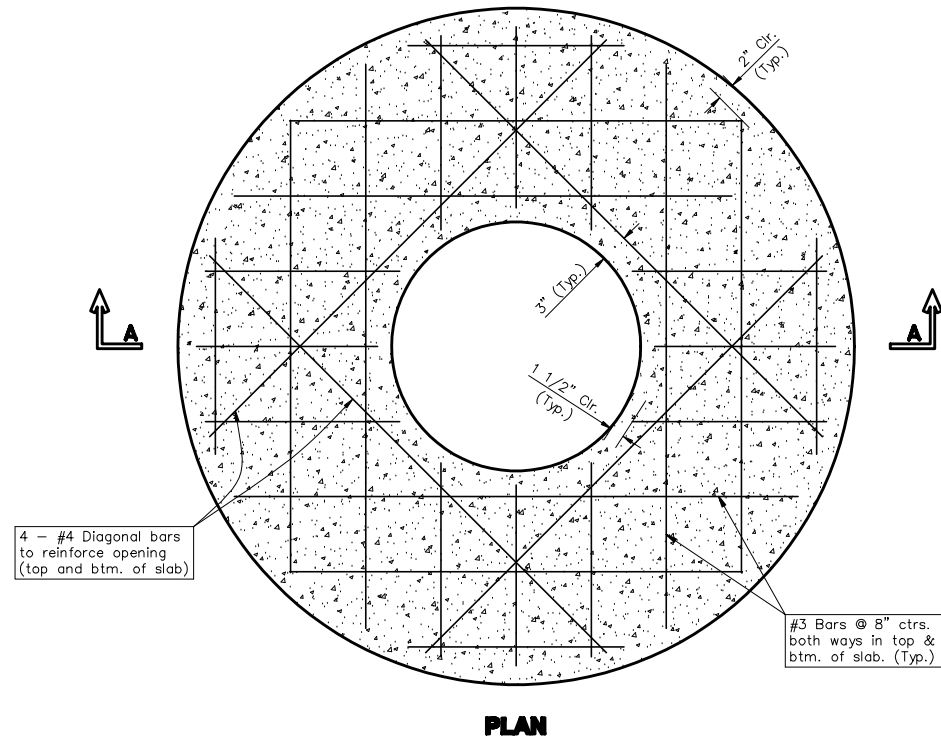
Professional Engineer Seal
 J.M. TOR
 2020 PPS (607861)
 Storm Sewer (SWS Line 1)
 Dec. 16, 2008
 3147 N. FAIRVIEW
 SANITARY SEWER
 WICHITA, KANSAS
 2
 3



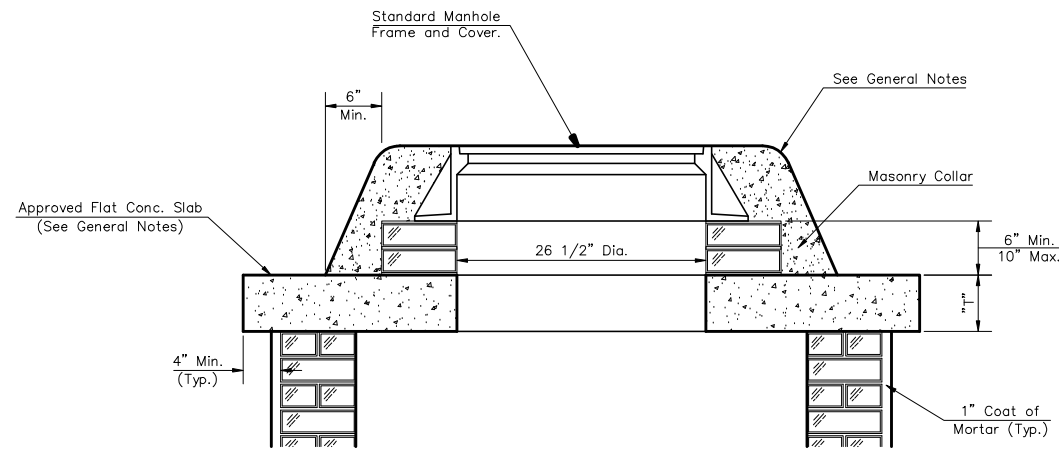
SHALLOW TYPE "A" MANHOLE



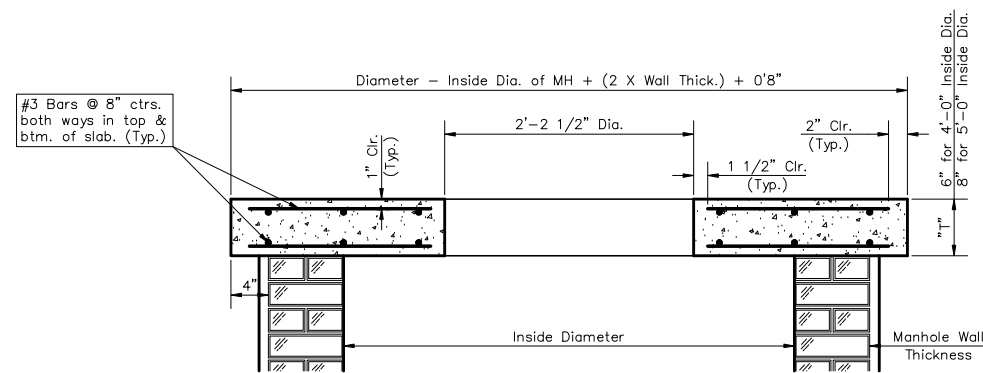
SHALLOW TYPE "B" MANHOLE



PLAN

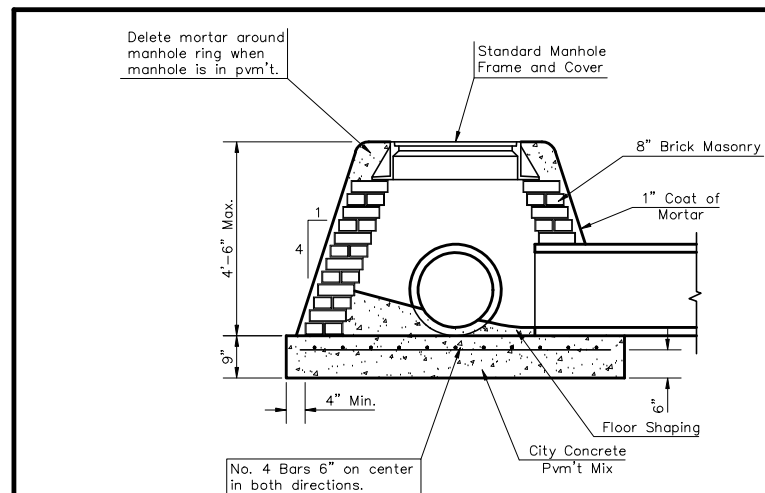


MASONRY COLLAR DETAIL

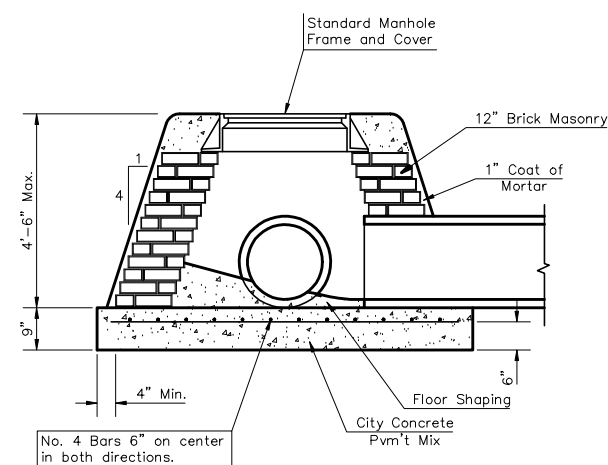


SECTION A-A

FLAT CONCRETE SLAB DETAILS



SPECIAL SHALLOW TYPE "A" MANHOLE



SPECIAL SHALLOW TYPE "B" MANHOLE

GENERAL NOTES

- Mortar used in masonry construction shall contain 8 sacks of cement per cubic yard. Concrete used in manhole bases shall conform to the requirements of concrete for concrete pavement construction as specified in the city standard paving specifications using city concrete cement mix without air entraining admixture. Mortar shall be placed around the manhole ring as shown on the drawings when manholes are constructed in unpaved areas. Type "A" shallow manholes can be used on sewers when the manhole is not located within public street pavement. Manholes constructed where pipe sizes are smaller than 24" shall have an inside diameter of 4". Manholes constructed where pipe sizes are 24" or larger shall have an inside diameter of 5". Completed manhole shall be without leaks and water tight.
- Reinforcing steel shall be installed in the manhole bases and shall consist of no. 4 bars placed on 6" centers in both directions. The manhole base reinforcement shall be placed 6" above the bottom of the manhole base. All costs for furnishing and installing reinforcing steel shall be included in the unit price bid for the manhole.
- The floors of all manholes shall be shaped with flow channels such that the manholes will be self cleaning and free of areas where solids could be deposited as sewage flows through the manhole from all inlet pipes to the outlet pipe. Flow channels shall be formed to match the bottom halves of the inflowing pipes and the outflowing pipe as shown by the drawings. Manhole floors shall have slopes of 3 inches per foot in the areas outside of the flow channels sloped toward the flow channels. Pipes laid through manholes shall have the top half removed to neat lines for the full inside diameter of the manhole. Manhole floors shall then be shaped around the bottom half of the pipe which forms the flow channel.
- Pipes installed within the excavation made for the manhole shall be cradled with concrete to the limits of the manhole excavation. When clay pipe is used, the cradle shall extend to the first joint outside the manhole. The cradle shall be terminated at the clay pipe joint in a manner which will maintain the flexibility of the joint. Cost of cradle within manhole excavation or to clay pipe joints adjacent to manhole shall be included in the unit price bid for the manhole.
- Manhole cover castings and manhole frame castings shall conform to the requirements as indicated in the standard specifications and as shown in the standard detail drawings.
- The crowns of inflowing pipes shall never be set lower than the crown of the outflowing pipe.
- Standard shallow manholes type "A" and "B" shall be paid for at the unit price bid per each for the type and diameter indicated. Standard special shallow manholes type "A" and "B" shall be paid for at the unit price bid per each for the type indicated. All standard shallow manhole diameters will be 4' unless indicated otherwise.
- All brick used in manhole construction shall meet Grade SW of ASTM C652 or C62-87.

SPECIAL SHALLOW MANHOLE MAY BE PRECAST CONCRETE, WITH ENGINEER'S APPROVAL.

<p>THE CITY OF WICHITA</p> <p>CITY ENGINEER'S OFFICE CITY HALL - SEVENTH FLOOR 405 NORTH MAIN STREET WICHITA, KANSAS 67202 (316) 268-4501 (316) 268-4114 FAX</p>	STANDARD / SPECIAL SHALLOW MANHOLES TYPE 'A' AND 'B'	
	PROJECT NUMBER 2020 PPS	DCA # 607861
	DATE MAR 96	SHEET 3 OF 3