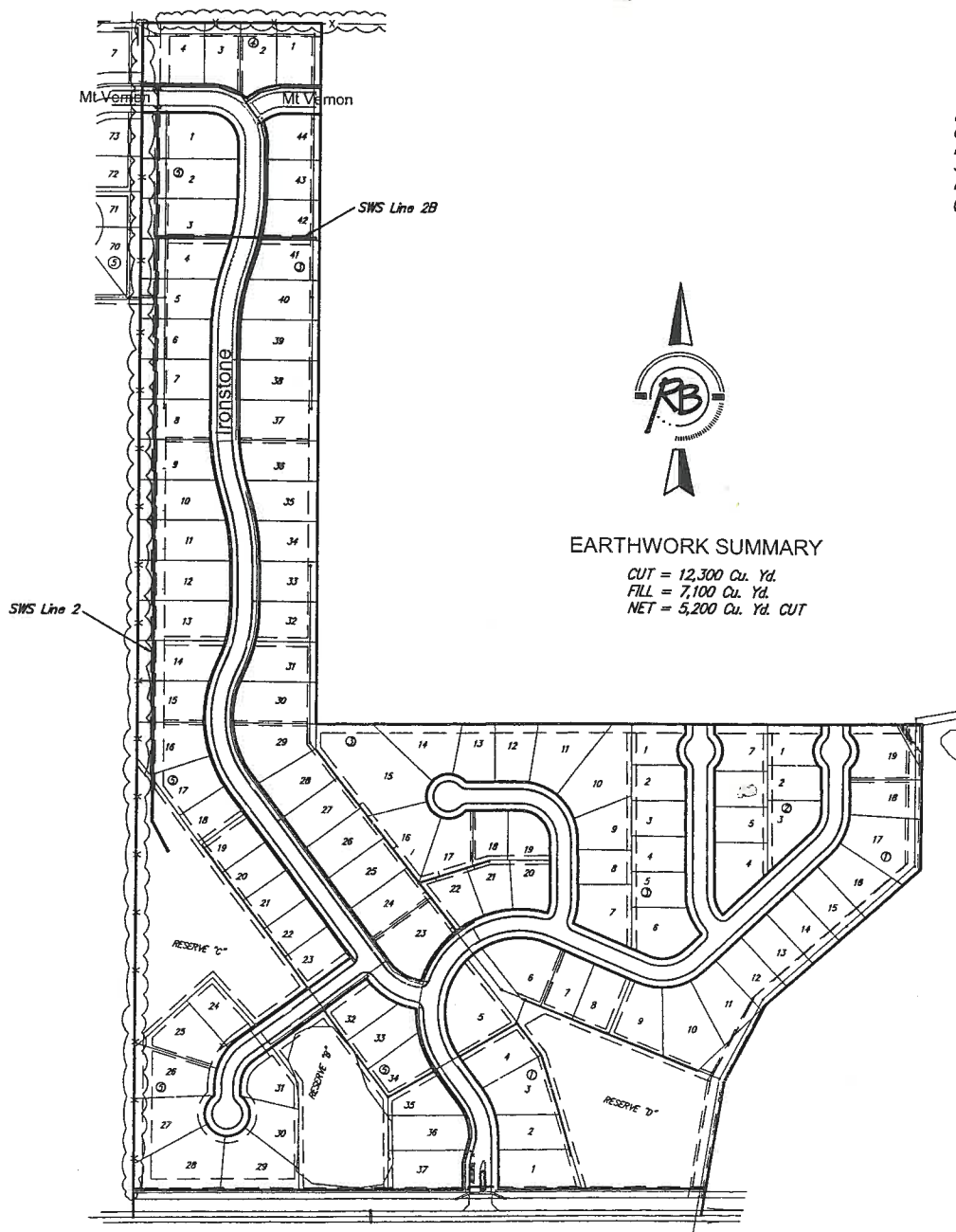


GENERAL NOTES

- Contractor will be required to provide a minimum advance notice of two (2) working days to utility companies prior to starting any excavation as follows:
 Kansas One-Call 1-800-DIG SAFE
 The Contractor must notify the following in case of an emergency:
 Cox Communications 260-7204
 Kansas Gas Service 383-8600
 Westar 383-8600
 Peoples Natural Gas Company 1-800-303-0357
 AT&T 1-800-286-8313
 City of Wichita Water Department 262-6000
 City of Wichita Sewer Maintenance 262-6000
- Underground utility service lines and overhead utility pole lines are to be adjusted as necessary by others prior to construction unless the plans specifically call for their adjustment by the Contractor or unless the plans specifically identify a utility to be adjusted by its owner during construction. Existing utilities and their location, as shown on the plans, represent the best information obtainable for design. Location information has been obtained from the various utility companies and is either from company record drawings or company-provided field locations. The Contractor will be required to work around existing utilities within the right-of-way which do not conflict with proposed construction.
- Rubble from the removal of miscellaneous structures and excess excavation which is to be wasted shall be disposed of on sites to be provided by the Contractor. These sites shall be approved by the Engineer as to suitability, appearance and site location. Locations that, in the opinion of the Engineer, will leave an unsightly appearance will not be approved.
- All disposal sites must be approved by the Kansas Department of Health and Environment. Material either stockpiled or disposed of in a flood plain would require a Kansas State Board of Agriculture permit. Any material dumped in waters of the United States or wetlands is subject to U.S. Corps permitting regulations. Any material buried or stockpiled beyond approved of Engineers construction limits would require additional archeological investigations unless buried in a previously approved borrow location.
- The Engineer shall take field ties to all quarter section corners. The Contractor shall set a City survey monument in the required location where such quarter section corners fall within the limits of pavement construction. Survey monuments will be furnished by the City. The Engineer will accurately locate and install the iron at the quarter section corner. This work will not be paid for directly, but shall be considered subsidiary to the other pay items of work in the contract.
- The Contractor shall give all property owners and/or tenants of developed property directly abutting the construction of this project a minimum of ten (10) days advance notice prior to start of construction.
- For all ponds, the pond bottom and sides (to an elevation of 1.0' above the static pool) are to be lined with clay to a minimum depth of 1 foot, moisture conditioned and compacted to a minimum of 95 percent of standard proctor density (ASTM D-698) from minus 3 to plus 3 percent of optimum moisture content. Pond liner shall be clay soil with a minimum P.I. value of 30 or must be approved by a geotechnical engineer; soil to be paid for as "Pond Liner C.Y."
- All trees along the perimeter of Sierra Hills 2nd Addition shall be protected during construction. Any trimming or removal of tree rows must be approved by the Engineer. All other trees interior to Sierra Hills 2nd Addition are to be removed by the developer.
- Prior to final project acceptance, representatives of the Contractor, Owner, and Engineer shall meet on site to conduct a final project evaluation. A punchlist agreed upon by all parties shall be prepared and all items addressed prior to final project acceptance.
- All waste areas for excess cut must be approved by the engineer. All excess material is to remain on site.
- Soil Volumes are based on the assumption that 6" of Topsoil have been stripped and stockpiled off lots 37-44, Block 3, 1-4, Block 4 and 1-8, Block 5.
- All trees in conflict with SMD construction are to have been removed by developer prior to construction.

STORM WATER DRAIN to serve SIERRA HILLS 2ND ADDITION 1973PPS (607861)

AS BUILT PLANS
 Contractor: Duling Construction Co., Inc.
 Inspector: Tony Young
 .pdf by: Eric Glover 7-16-2010



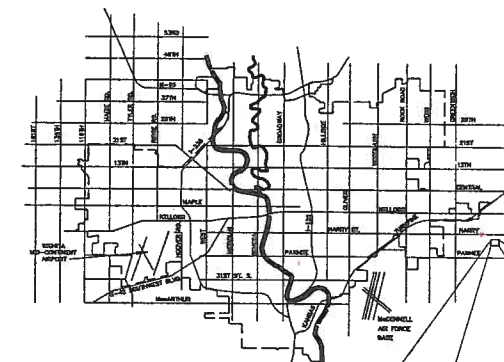
BENCH MARKS

BENCH MARK #1: SRB BRASS DISC 1008.17' E. & 55.63' N. OF THE CENTERLINE INTERSECTION PANNÉE AVENUE & 127TH STREET EAST ELEVATION = 1,336.63 (NGVD29)

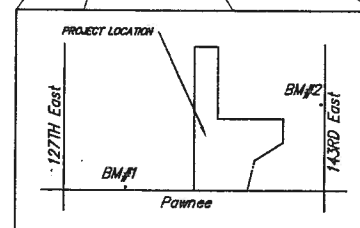
BENCH MARK #2: CHISELED SQUARE ON THE TOP OF A CONCRETE HEADWALL AT THE NORTHWEST CORNER OF A BRIDGE, 981 FEET NORTH AND 13 FEET WEST OF THE SOUTHWEST CORNER OF SECTION 36, T27S, R2E ELEVATION = 1,308.29 (NGVD29) (SEE VICINITY MAP)

SHEET INDEX

- | | |
|--------|-------------------|
| 1. | TITLE |
| 2. | SITE GRADING |
| 3. | POND PLAN |
| 4. | WEIR PLAN |
| 5. | TEMPORARY SWALE |
| 6-7. | SOIL REPORT |
| 8-11. | SWS LINE 2 |
| 12. | SWS LINE 2B |
| 13. | TYPE 1A DOUBLE |
| 14. | TYPE P MH |
| 15. | SHALLOW TYPE P MH |
| 16-17. | BMP PLAN |
| 21-25. | BMP DETAILS |
| 26. | FINAL PLAT |



VICINITY MAP



AS-BUILT PLANS

Signed Eric J. Glover
 Date 7/16/10

APPROVED AS NOTED
 BY CITY ENGINEER OF WICHITA

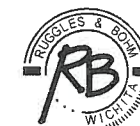
Sanitary Sewers _____
 Storm Sewers Shawn Mellis 7-9-09
 Driveway Approaches _____
 Water Mains _____
 Paving _____

NOTE TO CONTRACTORS
 Inspection and testing for this project are to be provided by a Licensed Consulting Engineering Firm under contract with the Owner/Developer. Said inspection to be in accordance with the City of Wichita standard construction engineering practices and certified by a Licensed Professional Engineer. No work shall be performed in dedicated easements or public right-of-way by the Contractor without such inspection, nor shall any work be commenced without written authorization by the City Engineer.

CITY OF WICHITA, KANSAS
 JAMES ARMOUR, P.E. - CITY ENGINEER

3268E

Ruggles & Bohm, P.A.
 Engineering, Surveying, Land and Planning



924 North Main (316) 264-8008
 Wichita, Kansas 67203 (316) 264-4621 fax
 www.rbkansas.com E-mail: info@rbkansas.com