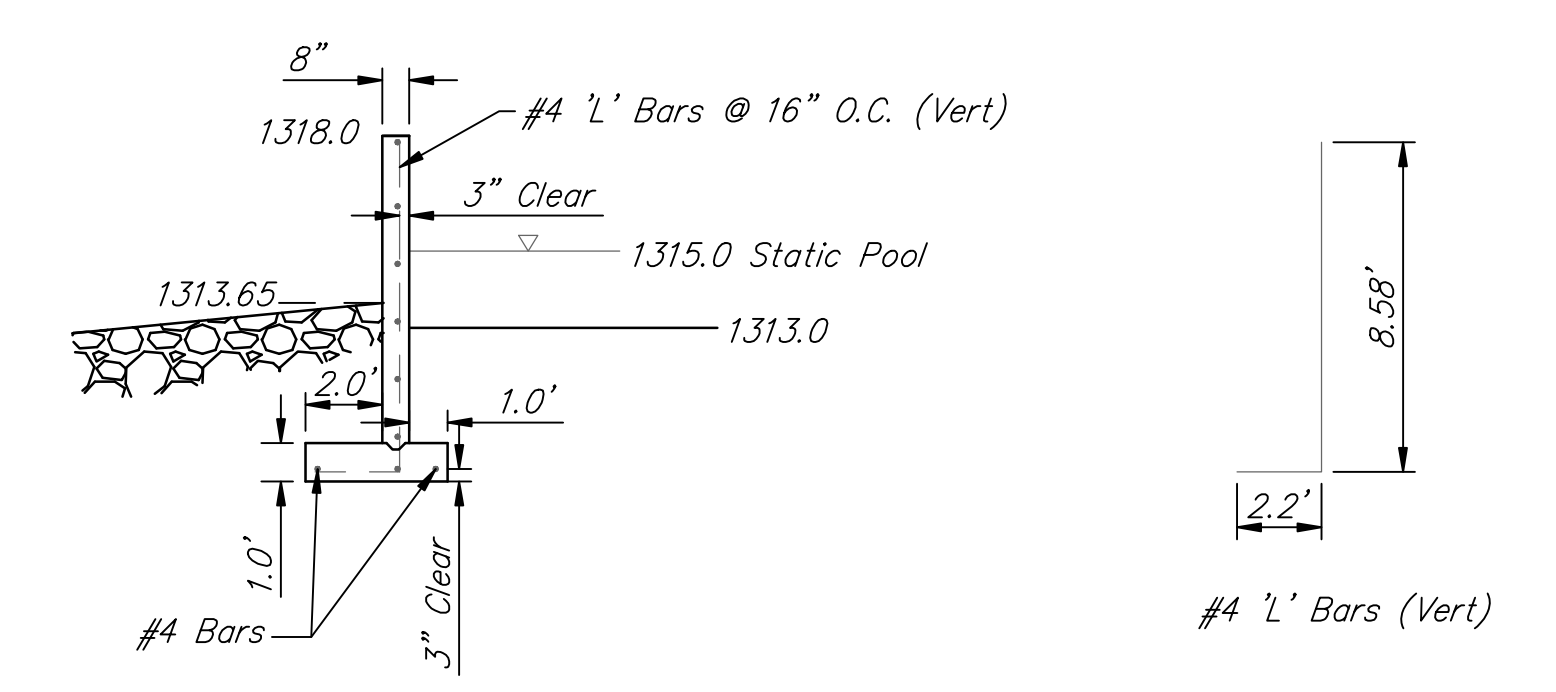
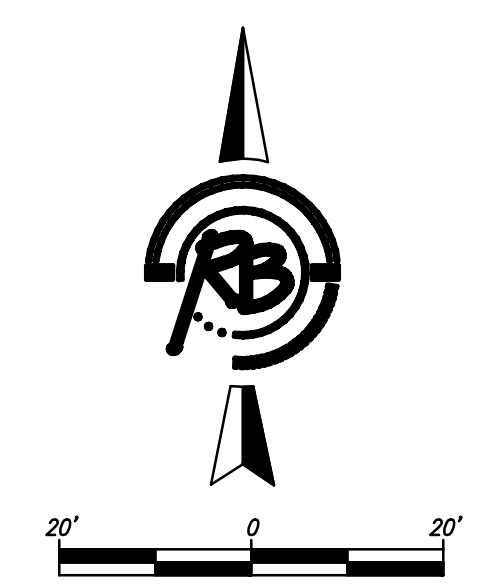


Pond 2 Weir Wall Detail

Air Entrained Concrete: $f'_c = 4000$ psi @ 28 days
 Reinforcing: $F_y = 60000$ psi
 Cover over Reinforcing is 2" Clear unless otherwise indicated



Weir Wall Profile



Sierra Hills 2nd Addition Pond 2 Weir WICHITA, KANSAS			
	Ruggles & Bohm, P.A. Engineering, Surveying, Land Planning		DRAWN EJG CHECKED EJG PROJECT April 30, 2009 UTILITY
	824 North Main Wichita, Kansas 67203 www.rbgkansas.com		(316) 264-8800 (316) 264-8811 fax E-mail: info@rkgkansas.com
ISSUED FOR Engineering Base {Pond 2 Weir}	PROJECT NUMBER 1973PPS	DATE ----	SHEET 326BE OF 4 23