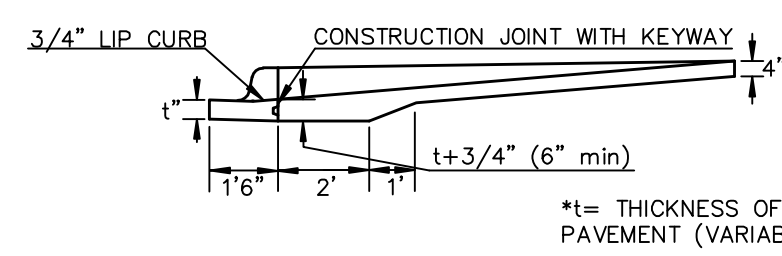
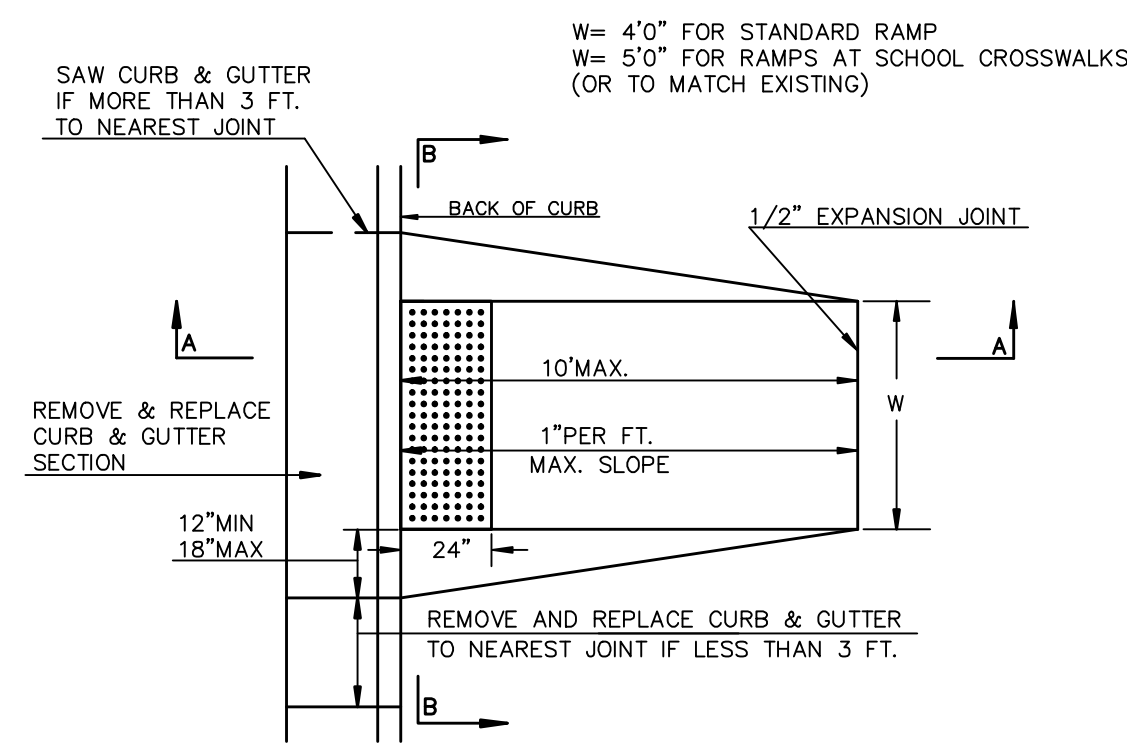
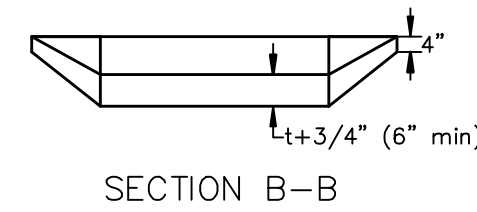


**STANDARD WHEELCHAIR RAMP CONSTRUCTION DETAIL FOR STREETS WITH COMBINED CURB & GUTTER WITH COMBINED CURB & GUTTER (TYPE A)**



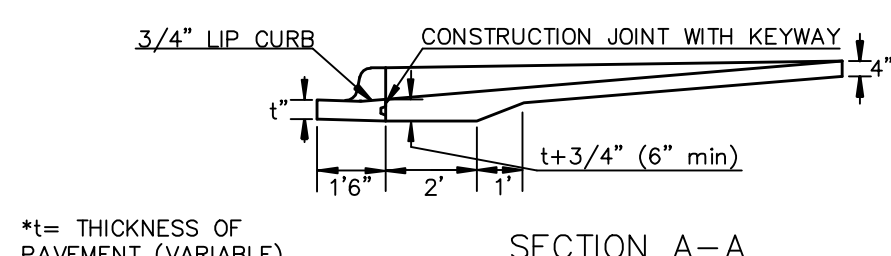
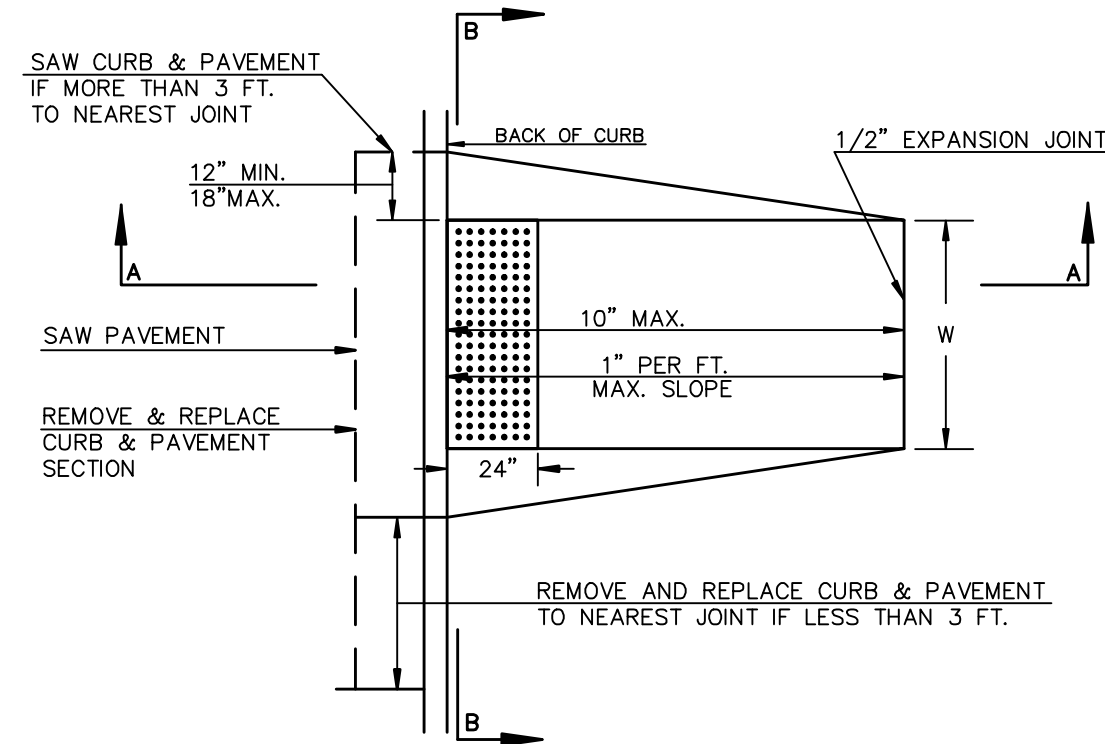
SECTION A-A



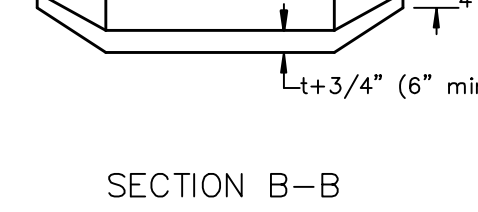
SECTION B-B

**STANDARD WHEELCHAIR RAMP CONSTRUCTION DETAIL FOR CONCRETE STREETS WITH MONOLITHIC CURB (TYPE A)**

W=4'0" FOR STANDARD RAMP  
W=5'0" FOR RAMP AT SCHOOL CROSSWALKS  
(OR TO MATCH EXISTING)

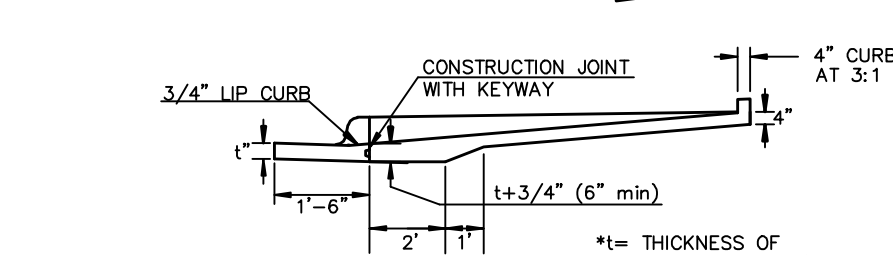
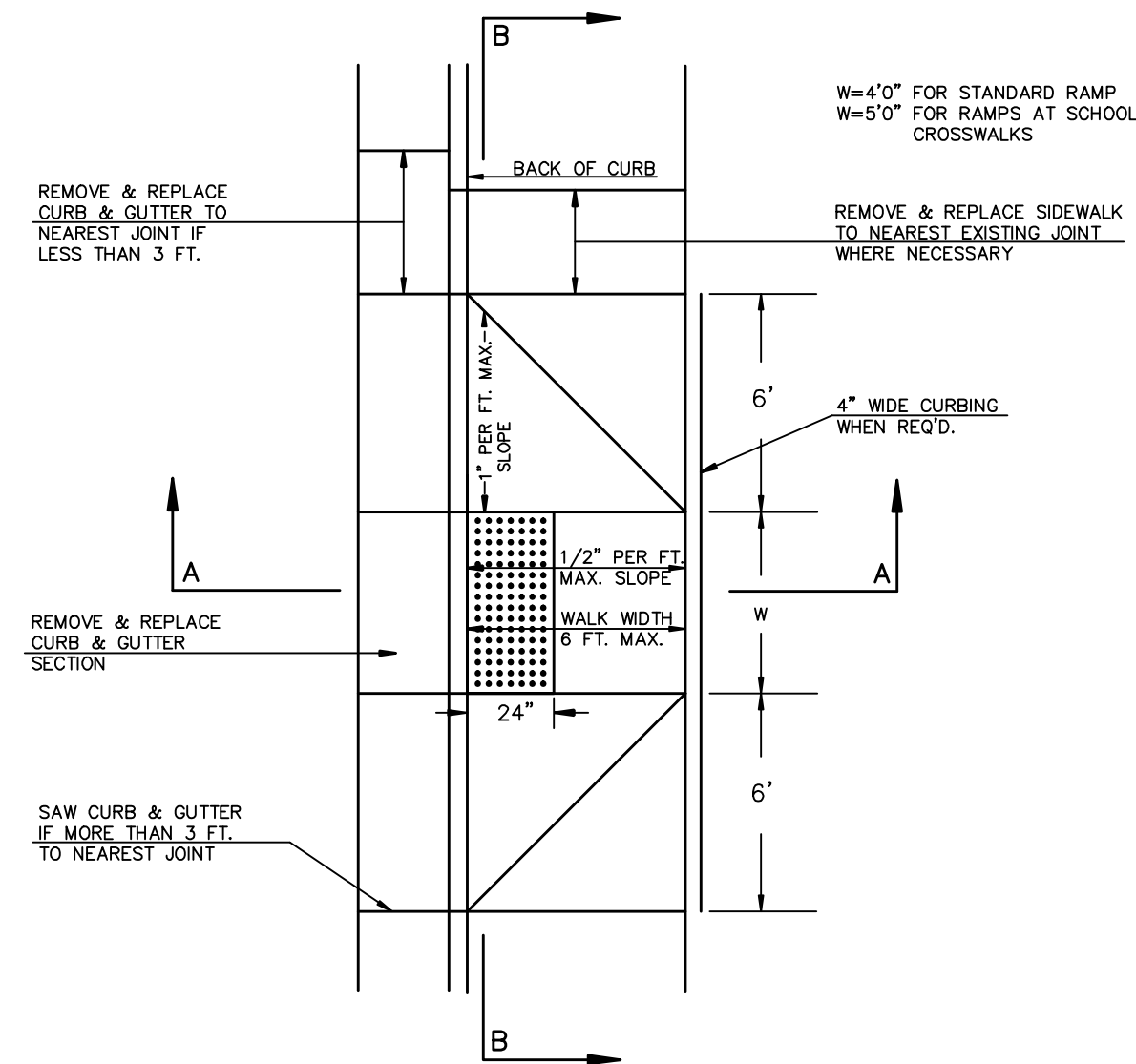


SECTION A-A

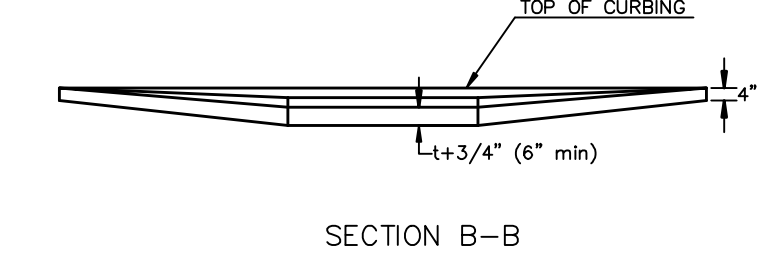


SECTION B-B

**STANDARD WHEELCHAIR RAMP CONSTRUCTION DETAIL FOR STREETS WITH COMBINED CURB & GUTTER AND FULL WALK (TYPE B)**

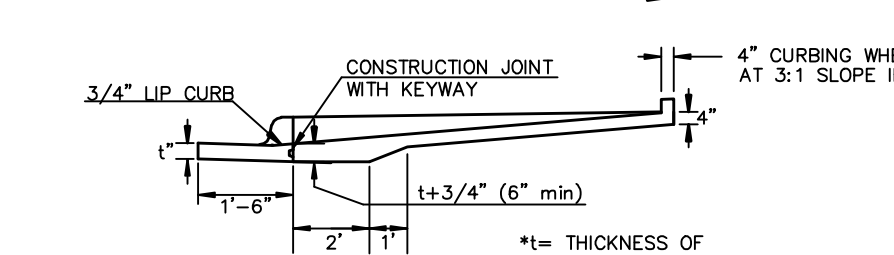
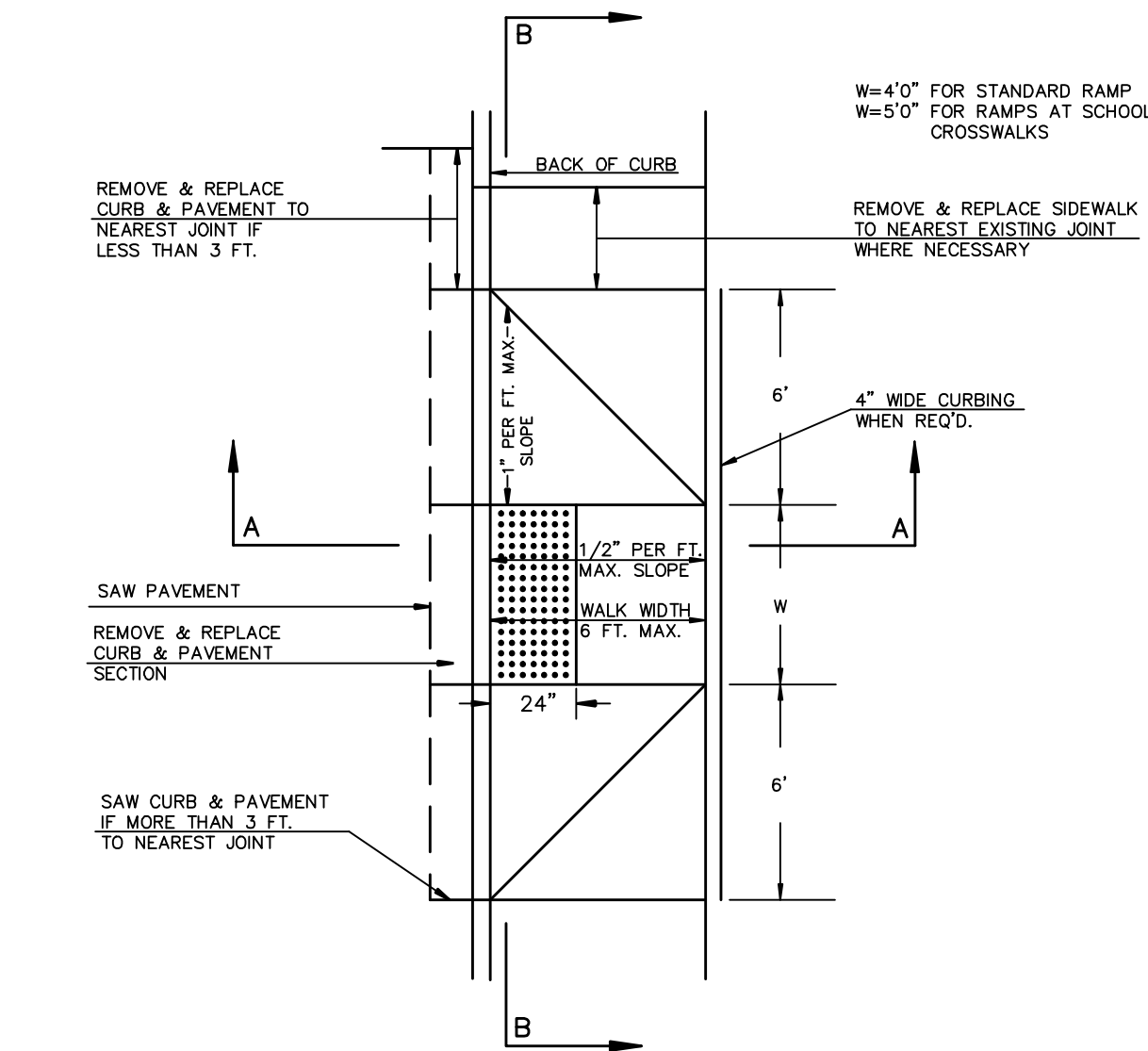


SECTION A-A

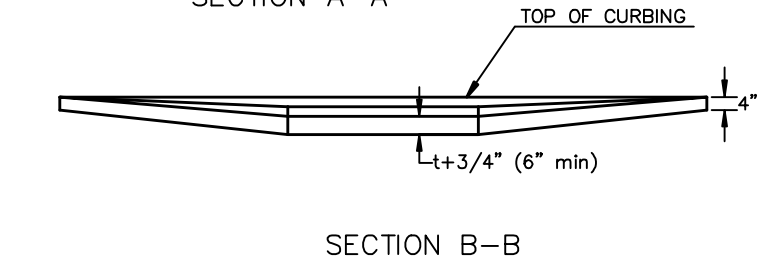


SECTION B-B

**STANDARD WHEELCHAIR RAMP CONSTRUCTION DETAIL FOR STREETS WITH MONOLITHIC CURB AND FULL WALK (TYPE B)**

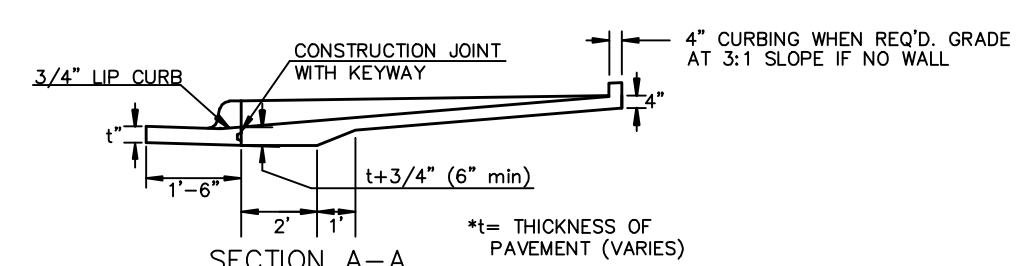
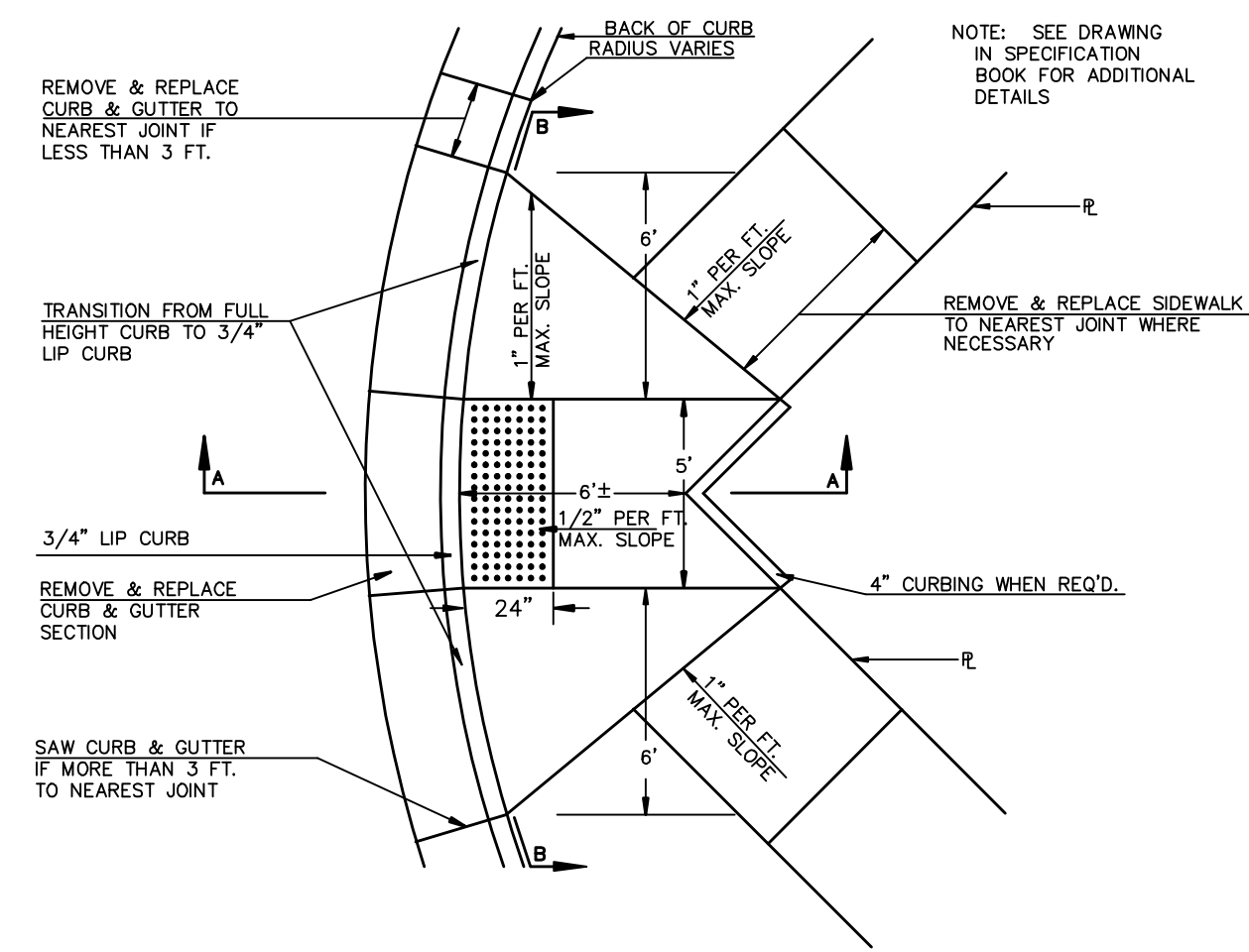


SECTION A-A

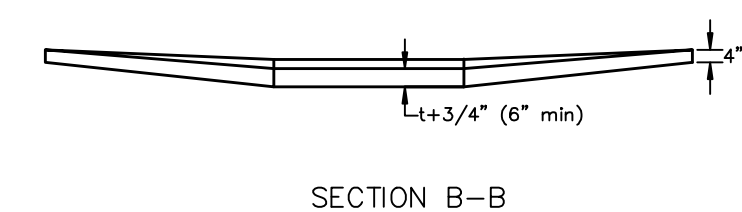


SECTION B-B

**STANDARD WHEELCHAIR RAMP CONSTRUCTION DETAIL FOR STREET WITH COMBINED CURB AND GUTTER ON RADIUS WITH 6+ FEET FROM BACK OF CURB TO PROPERTY CORNER (TYPE C)**

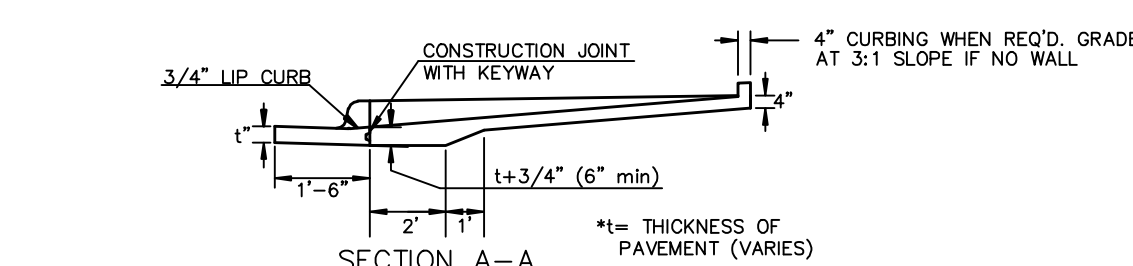
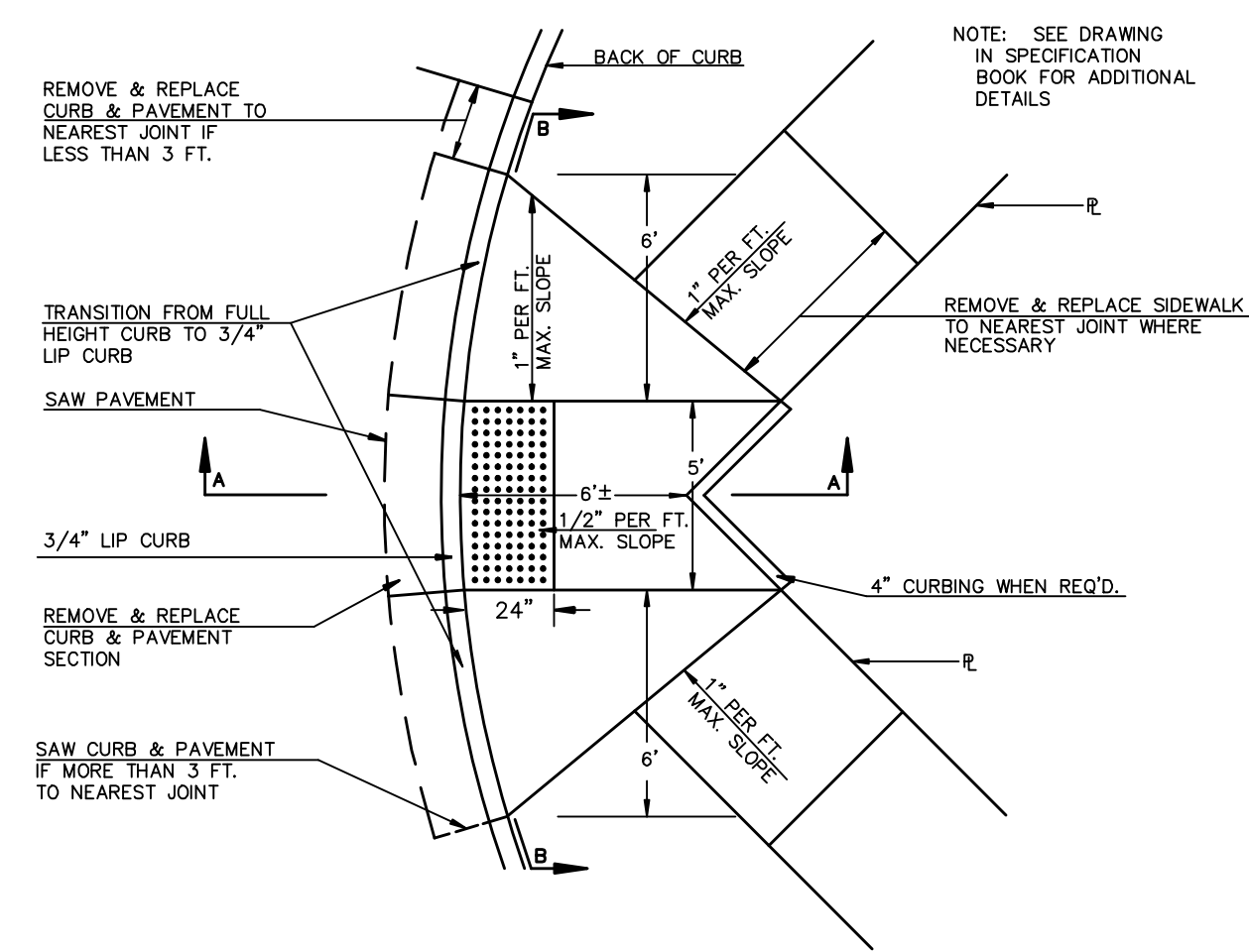


SECTION A-A

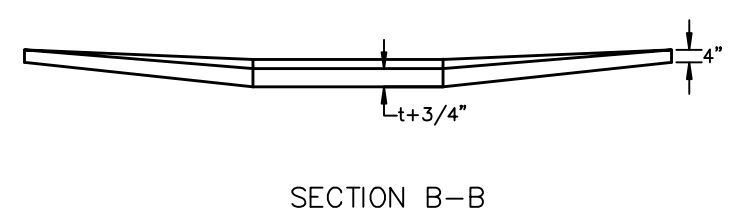


SECTION B-B

**STANDARD WHEELCHAIR RAMP CONSTRUCTION DETAIL FOR STREET WITH MONOLITHIC CURB ON RADIUS WITH 6+ FEET FROM BACK OF CURB TO PROPERTY CORNER (TYPE C)**

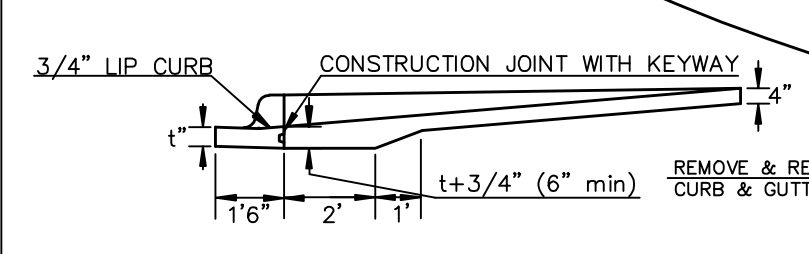
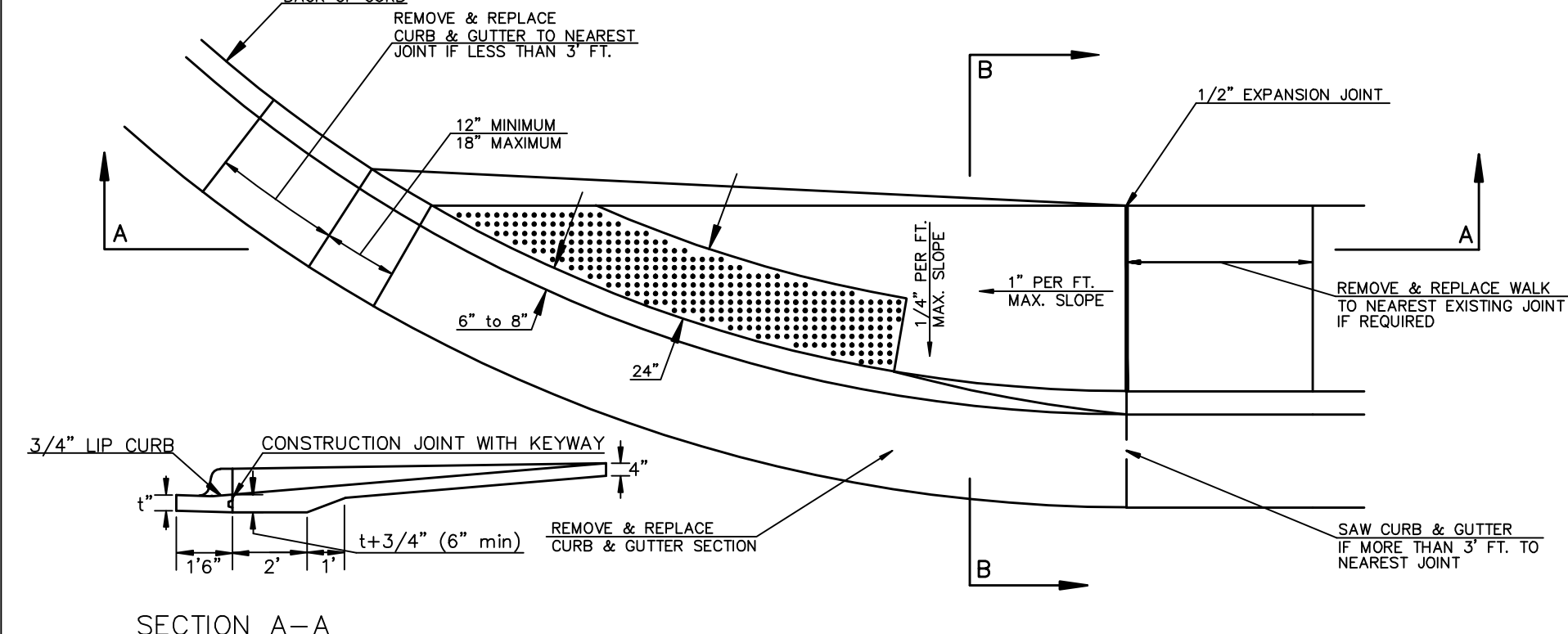


SECTION A-A

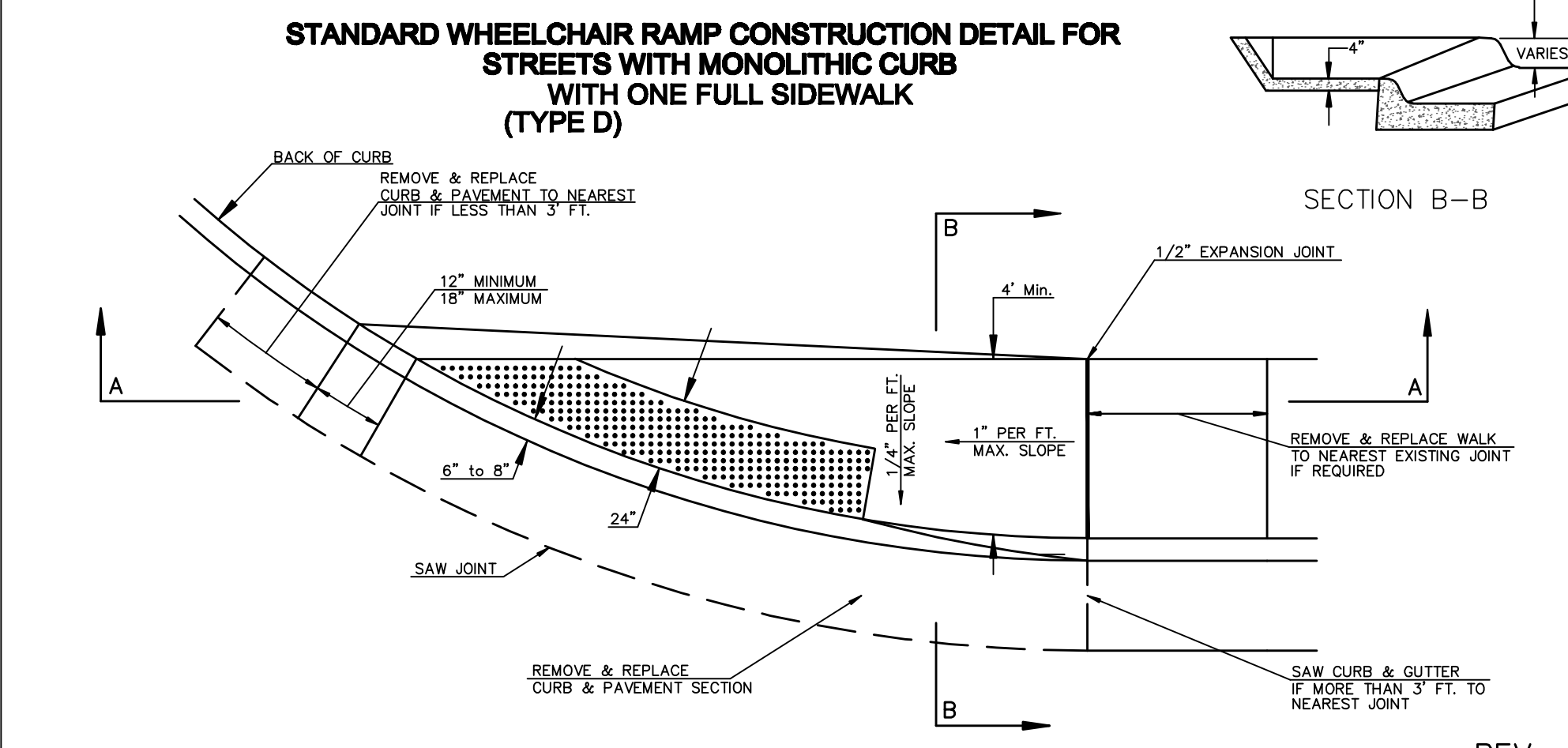


SECTION B-B

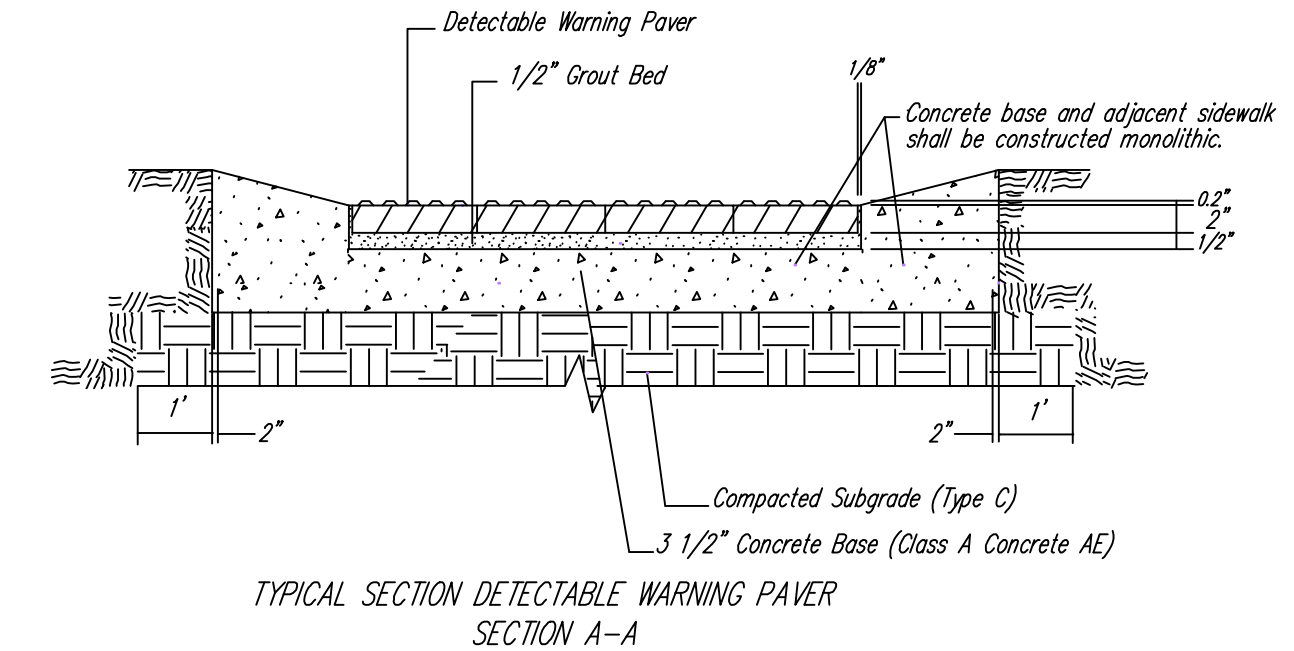
**STANDARD WHEELCHAIR RAMP CONSTRUCTION DETAIL FOR STREETS WITH COMBINED CURB & GUTTER WITH ONE FULL SIDEWALK (TYPE D)**



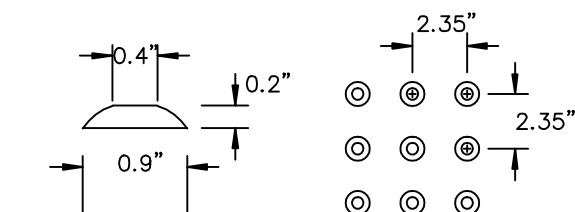
SECTION A-A



SECTION B-B



NOTE: HANOVER DETECTABLE WARNING PAVERS (OR AN APPROVED ALTERNATE) SHALL BE USED IN ALL WHEELCHAIR RAMP. THE 11 3/4" RED 15' PAVES SHALL BE USED IN ALL APPLICATIONS.  
HANOVER ARCHITECTURAL PRODUCTS  
240 BENDER ROAD  
HANOVER, PA 17331  
1-717-637-0500  
www.hanoverpavers.com



DOME DETAIL

		<b>WHEELCHAIR RAMP DETAILS</b>	
		CITY ENGINEER <b>JIM ARMOUR P.E. L.S.</b>	
PROJECT NUMBER 472-84730	OGA NUMBER	DATE	
CITY ENGINEER'S OFFICE CITY HALL - SEVENTH FLOOR 435 NORTH MAIN STREET WICHITA, KANSAS 67202-1620 (316) 268-4501 (316) 268-4114 FAX	DESIGN	DRAWN	
	SHEET		3 of 17