

AS BUILT PLANS
Contractor: Cornejo & Sons
Inspector: Tony Young
.pdf by: Erie Glover, 7-16-2010

Private Street Improvements

Victoria from South line of 43rd South to North line of 44th South Carol Jean 2nd/Hobbs Village/Haley Village Addition 202PPP (607879)

BENCH MARKS

BENCH MARK #1: CHISELED SQUARE AT THE WEST CURB
 RETURN AT THE SOUTHWEST CORNER OF VICTORIA AND
 44TH STREET SOUTH
 ELEVATION = 1270.50 (NAVD88)

GENERAL NOTES

1. Contractor will be required to provide a minimum advance notice of seventy-two (72) hours to utility companies prior to starting any excavation as follows:

Kansas One-Call 687-2470

The Contractor must notify the following in case of an emergency:

Cox Communications	262-0661
Kansas Gas Service	888-482-4950
Westar	383-8600
Aquila	1-800-303-0357
ATT	1-800-286-8313
City of Wichita Water Department	262-6000
City of Wichita Sewer Maintenance	262-6000

2. Underground utility service lines and overhead utility pole lines are to be adjusted as necessary by others prior to construction unless the plans specifically call for their adjustment by the Contractor or unless the plans specifically identify a utility to be adjusted by its owner during construction. Existing utilities and their location, as shown on the plans, represent the best information obtainable for design. Location information has been obtained from the various utility companies and is either from company record drawings or company-provided field locations. The Contractor will be required to work around existing utilities within the right-of-way which do not conflict with proposed construction.

3. Rubble from the removal of miscellaneous structures and excess excavation which is to be wasted shall be disposed of on sites to be provided by the Contractor. These sites shall be approved by the Engineer as to suitability, appearance and site location. Locations that, in the opinion of the Engineer, will leave an unsightly appearance will not be approved.

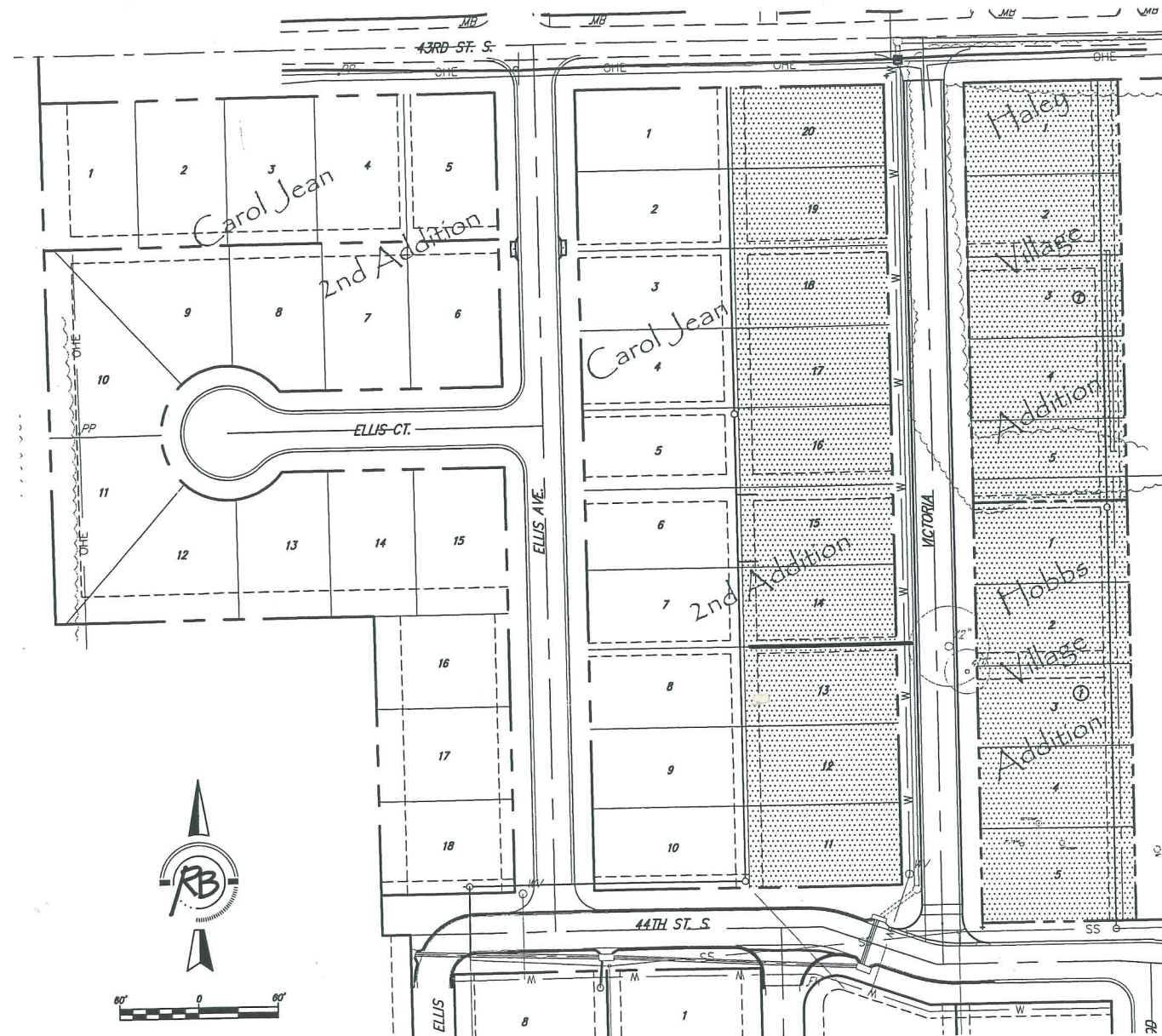
4. All disposal sites must be approved by the Kansas Department of Health and Environment. Material either stockpiled or disposed of in a flood plain would require a Kansas State Board of Agriculture permit. Any material dumped in waters of the United States or wetlands is subject to U.S. Corps permitting regulations. Any material buried or stockpiled beyond approved of Engineers construction limits would require additional archeological investigations unless buried in a previously approved borrow location.

5. The Contractor shall give all property owners and/or tenants of developed property directly abutting the construction of this project a minimum of ten (10) days advance notice prior to start of construction.

6. This project is to be constructed in accordance with the City of Wichita Standard Specifications for the Construction of City Projects, and Policy on Construction of Public Works Improvements by Private Contract.

7. No work shall begin on this project before bonds are submitted to the City of Wichita, and the project inspector has been notified.

8. The Contractor shall submit a traffic control plan, to be approved by the Engineer prior to any work.



INDEX OF SHEETS

1. TITLE SHEET
2. 31' PAVEMENT DETAIL
3. VALLEY GUTTER DETAIL
4. SIGNAGE DETAILS
- 5-6. VICTORIA PLAN/PROFILE
7. INTERSECTION DETAILS
8. SHALLOW MH DETAIL
9. TYPE 1A INLET DETAIL
- 9A. REINFORCED BOX DETAIL
- 10-12. STORM SEWER PLAN/PROFILE
13. GRADING PLAN
14. BMP PLAN
- 15-19. BMP DETAILS
20. KEY MAP
21. PAVING COORDINATES
- 22-24. CROSS SECTIONS
25. FINAL PLAT

APPROVED AS NOTED
BY CITY ENGINEER OF WICHITA

Sanitary Sewers _____

Storm Sewers _____

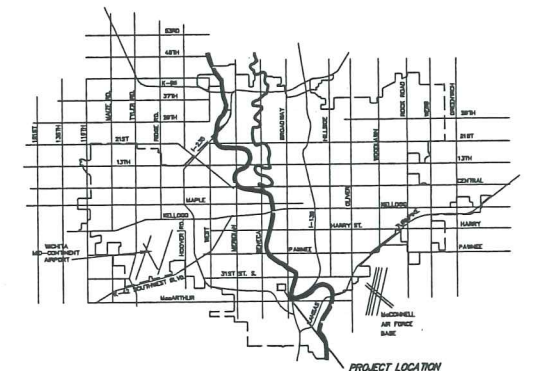
Driveway Approaches _____

Water Mains _____

Paving *Julianne Kellman 1-6-10*

NOTE TO CONTRACTORS

Inspection and testing for this project are to be provided by a Licensed Consulting Engineering Firm under contract with the Owner/Developer. Said inspection to be in accordance with the City of Wichita standard construction engineering practices and certified by a Licensed Professional Engineer. No work shall be performed in dedicated easements or public right-of-way by the Contractor without such inspection, nor shall any work be commenced without written authorization by the City Engineer.



VICINITY MAP

AS-BUILT PLANS

Signed *Erie Glover*
 Date *7/16/10*



IMPROVEMENT DISTRICT

CITY OF WICHITA, KANSAS
 JAMES ARMOUR, P.E. - CITY ENGINEER

3311E



Ruggles & Bohm, P.A.
 Engineering, Surveying, Land Planning
 924 North Main
 Wichita, Kansas 67203
 www.rbkansas.com
 (316) 264-8008
 (316) 264-4621 fax
 E-mail: info@rbkansas.com