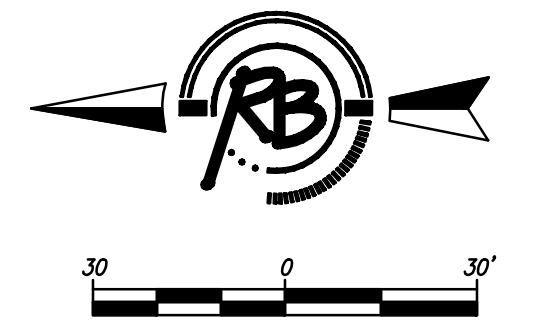
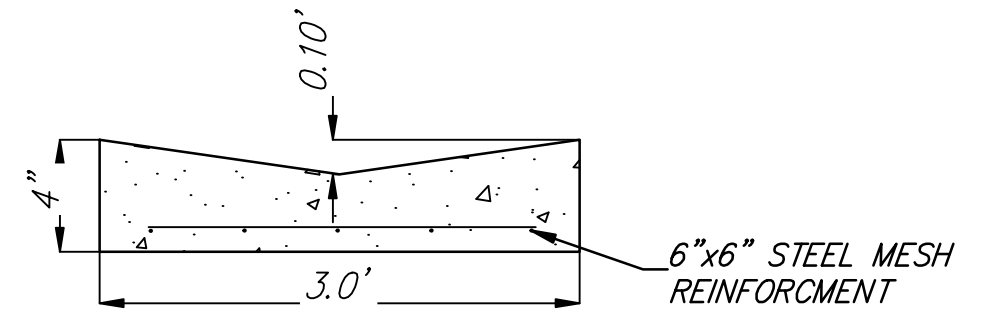


CONSTRUCT CONCRETE DITCH LINING
(WIDTH = 3.0') AS INDICATED.
LENGTH = 150.0'

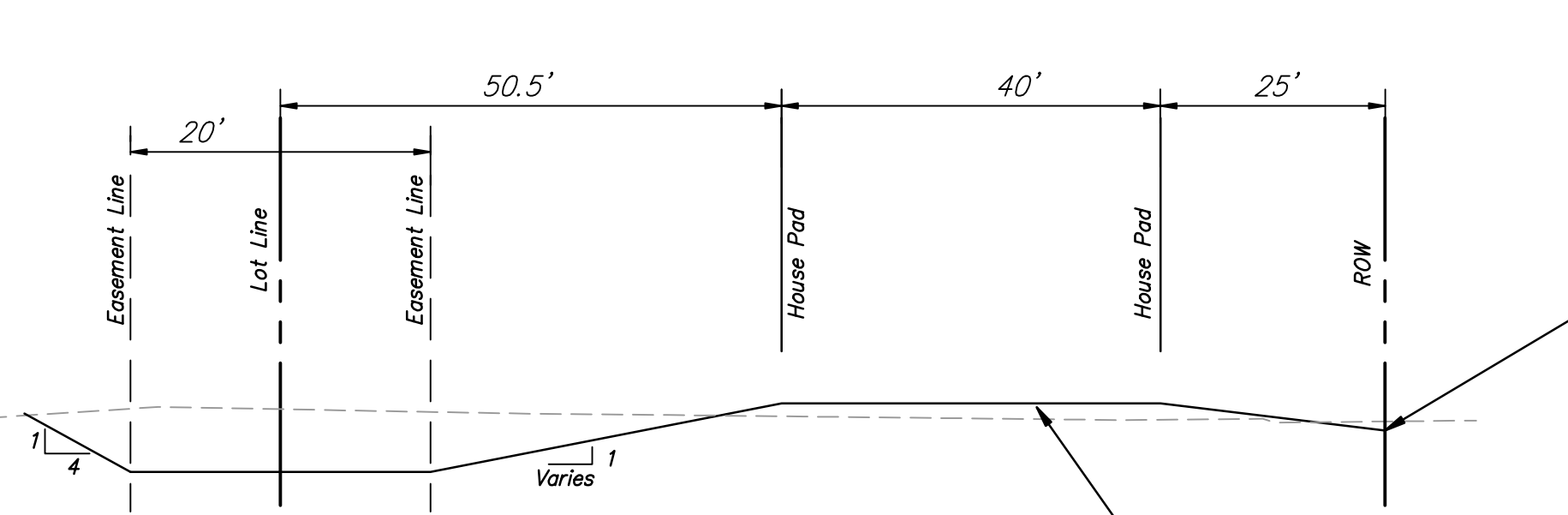


Site Grading Volumes
(For information only)
Excavation = 1125 CY
Fill Placement = 4319 CY

LOTS 11-20 CAROL JEAN 2ND ADDITION, LOTS 1-5 HOBBS VILLAGE ADDITION & LOTS 1-5 HALEY VILLAGE ADDITION ARE TO BE GRADED AS INDICATED THIS SHEET.



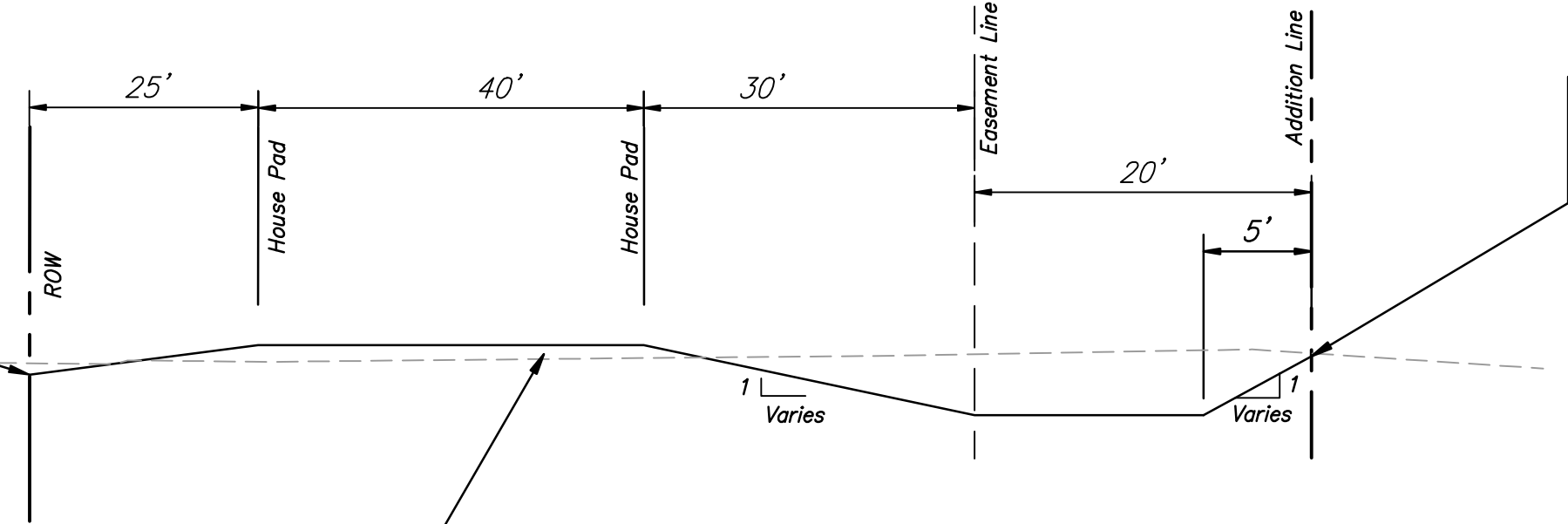
Concrete Ditch Lining
Note: Construction Joints spaced @ 50'
(construction joints may be sawn joints)
Expansion Joints Spaced at 150'



GRADING SECTION A-A

ALL FILL PLACED IN THE AREA OF THE FUTURE HOUSE PADS SHALL BE COMPACTED TO 95% STANDARD PROCTOR DENSITY

MATCH SITE GRADING TO TYPICAL PAVING SECTION AT STREET ROW. SEE TYPICAL PAVING SECTION DETAIL SHEET 2.



GRADING SECTION B-B

ALL FILL PLACED IN THE AREA OF THE FUTURE HOUSE PADS SHALL BE COMPACTED TO 95% STANDARD PROCTOR DENSITY

MATCH EXISTING GRADE AT EAST PROPERTY LINE HOBBS VILLAGE ADDITION & HALEY VILLAGE ADDITION.

CAROL JEAN 2ND/HOBBS VILLAGE ADDITION EASEMENT GRADING WICHITA, KANSAS	
 Ruggles & Bohm, P.A. Engineering, Surveying, Land Planning 824 North Main Wichita, Kansas 67203 www.rbag.com	EJOB EJOB EJOB EJOB EJOB
	PROJECT NUMBER Engineering Base (Easement Grading) 1992 PPS (607861)
PROJECT NUMBER 1992 PPS (607861)	DATE 13 OF 25