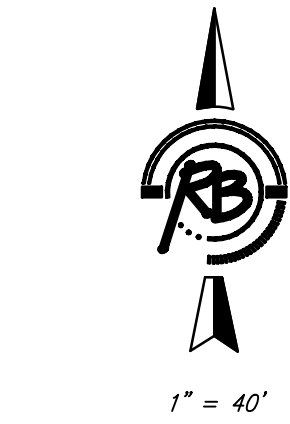
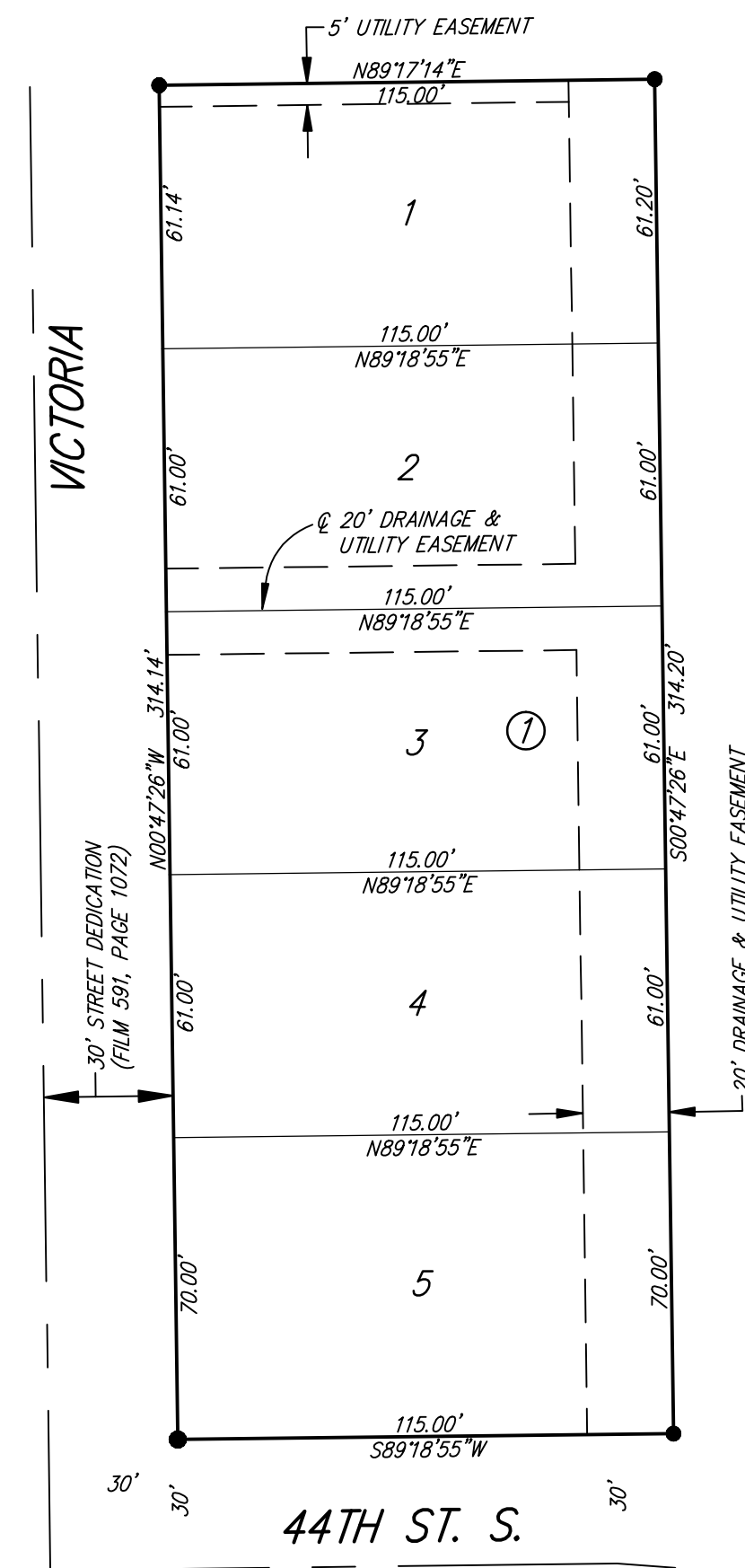


HOBBS VILLAGE

an Addition to Wichita, Sedgwick County, Kansas



1" = 40'

M = Measured
D = Described
C = Calculated
P = Platted (Carol Jean 2nd Addition)

- SURVEY MARKER LEGEND**
- 1/2" IRON PIPE (FOUND - ORIGIN UNKNOWN)
 - ⊙ 1/2" IRON PIPE IN THIMBLE (FOUND - ORIGIN UNKNOWN)
 - 5/8" REBAR W/RUGGLES & BOHM CAP (SET)

BENCH MARK: CHISELED SQUARE AT THE WEST CURB RETURN AT THE SOUTHWEST CORNER OF VICTORIA AND 44TH ST. S. ELEVATION = 1270.50 (NAVD88)

State of Kansas) SS
Sedgwick County)

We, Ruggles & Bohm, P.A., Land Surveyors in aforesaid county and state, do hereby certify that, under the supervision of the undersigned, we have surveyed and platted "HOBBS VILLAGE", an Addition to Wichita, Sedgwick County, Kansas, and that the accompanying plat is a true and correct exhibit of the property surveyed, described as follows:

The East 115.00 feet of the West 145.00 feet of a tract beginning 330.00 feet south of the Northeast corner of the SE1/4 of Sec. 16, T28S, R1E of the 6th P.M., Sedgwick County, Kansas; thence south 330.00 feet; thence west 660.00 feet; thence north 330.00 feet; thence east 660.00 feet to the point of beginning, EXCEPT the north 17.50 feet thereof.

All public easements and dedications are hereby vacated by virtue of K.S.A. 12-512(b).

Ruggles & Bohm, P.A.

Thomas C. Ruggles Land Surveyor

Know all men by these presents that we, the undersigned, have caused the land described in the surveyor's certificate to be platted into Lots and a Block, to be known as "HOBBS VILLAGE", an Addition to Wichita, Sedgwick County, Kansas. Utility Easements are hereby granted for the construction and maintenance of all public utilities. Drainage Easements are hereby granted to the public as indicated for drainage purposes. A drainage plan has been developed for this plat; the property shall remain at established grades, or as modified with the approval of the City Engineer, and unobstructed to allow for the conveyance of storm water.

Wichita Habitat for Humanity, Inc.

Linda Stewart Executive Director

State of Kansas) SS
Sedgwick County)

The foregoing instrument acknowledged before me, this _____ day of _____, 2009, by Linda Stewart, Executive Director, on behalf of Wichita Habitat for Humanity, Inc.

Notary Public

My appointment expires _____

This plat of "HOBBS VILLAGE", an Addition to Wichita, Sedgwick County, Kansas, has been submitted to and approved by the Wichita-Sedgwick County Metropolitan Area Planning Commission, Wichita, Kansas.

Dated this _____ day of _____, 2009.

Wichita-Sedgwick County Metropolitan Area Planning Commission

G. Nelson Van Fleet Chair

John L. Schlegel Secretary

This plat approved and all dedications shown hereon accepted by the City Council of the City of Wichita, Kansas, this _____ day of _____, 2009.

At the Direction of the City Council

Carl Brewer Mayor

Karen Sublett City Clerk

Reviewed in accordance with K.S.A. 58-2005 on this _____ day of _____, 2009.

Tricia L. Robello, LS #1246 Deputy County Surveyor Sedgwick County Kansas

Entered on transfer record this _____ day of _____, 2009.

County Clerk

Kelly B. Arnold

State of Kansas) SS
Sedgwick County)

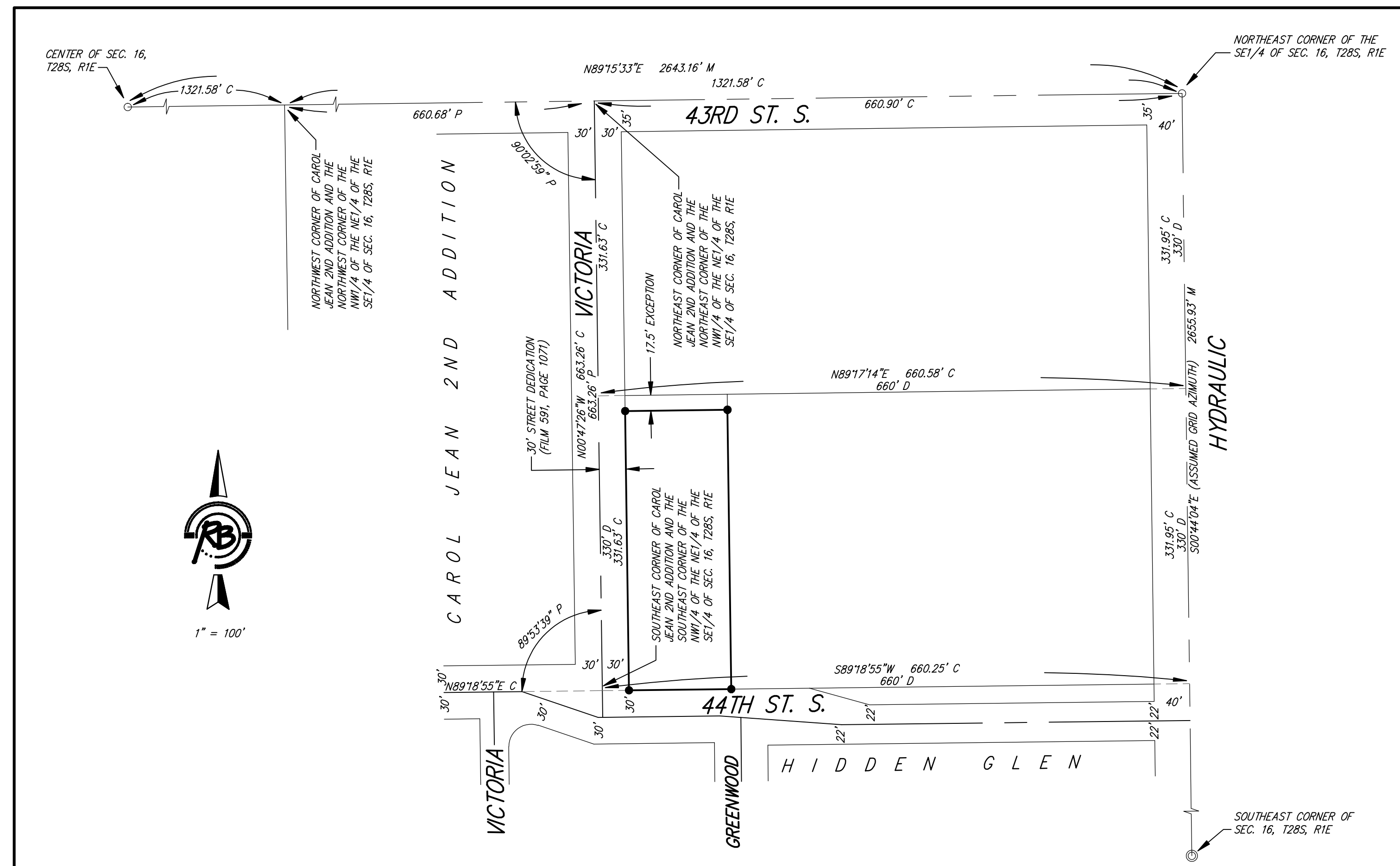
This is to certify that this plat has been filed for record in the office of the Register of Deeds, this _____ day of _____, 2009, at _____ o'clock _____ M, and is duly recorded.

Register of Deeds

Bill Meek

Deputy

Tonya Buckingham



1" = 100'

DWG FILE: SURVEY BASE
PROJECT NO: 3457P
OCTOBER 5, 2009



Ruggles & Bohm, P.A.
Engineering, Surveying, Land Planning
624 North Main
Wichita, Kansas 67208
www.rugglesandbohm.com
(316) 264-6888
(316) 264-6821 fax
E-mail: info@rugglesandbohm.com