

AS BUILT PLANS
 Contractor: Mies
 Inspector: Lyle Powers, Baughman Co.
 pdf's by: KEK 3/4/10

T. Mason - City of Wichita, Inspector
 Stubs & Risers
 Release Date: 4/2/2010
 : APRos 4/2/2010

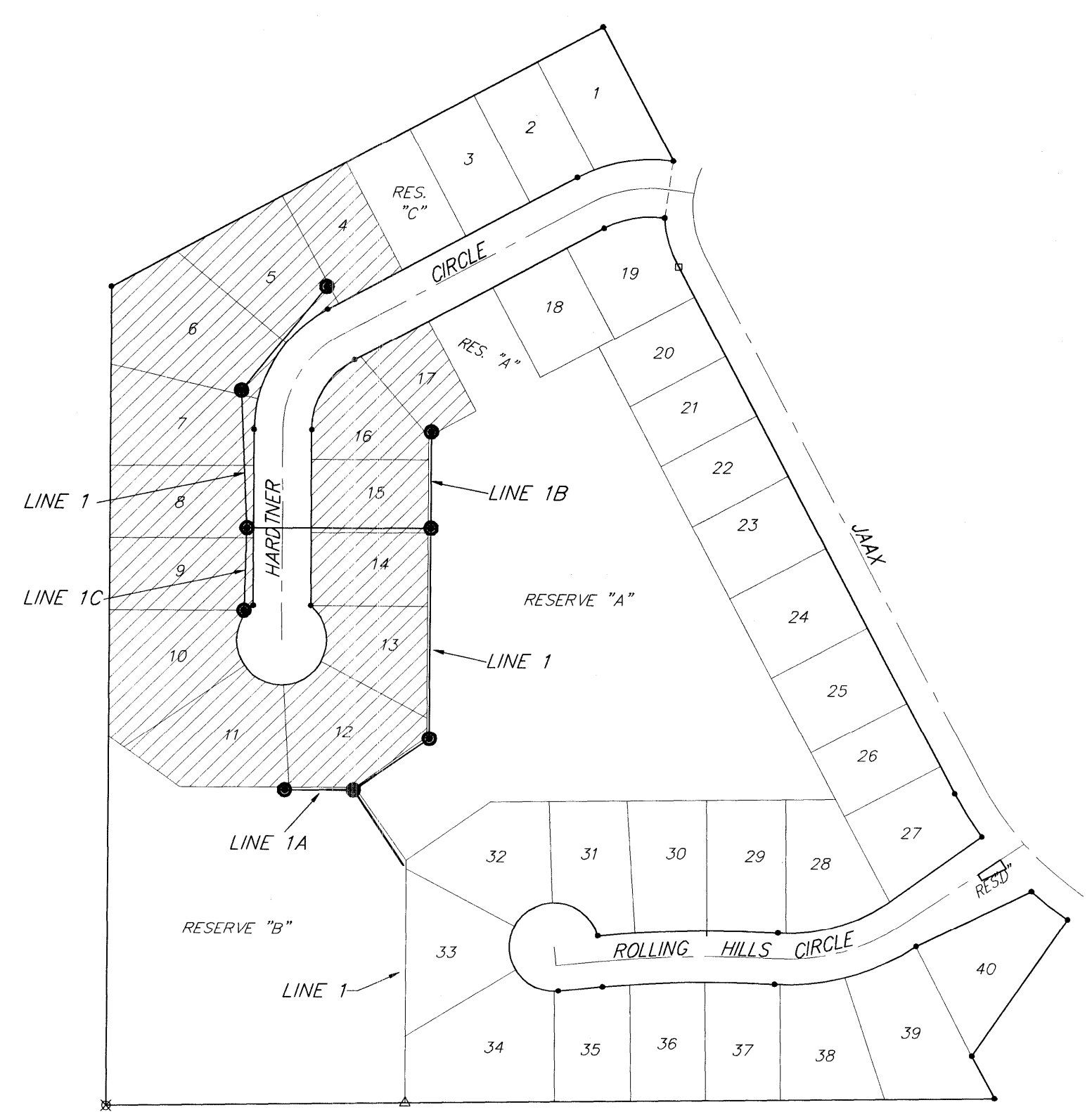
SANITARY SEWER EXTENSION TO SERVE BAY COUNTRY 2ND ADDITION

LOTS 4-17
 Project Number
 1888 PPS (607861)

CITY OF WICHITA, KANSAS
 James Armour, P.E. City Engineer
 NOVEMBER, 2009

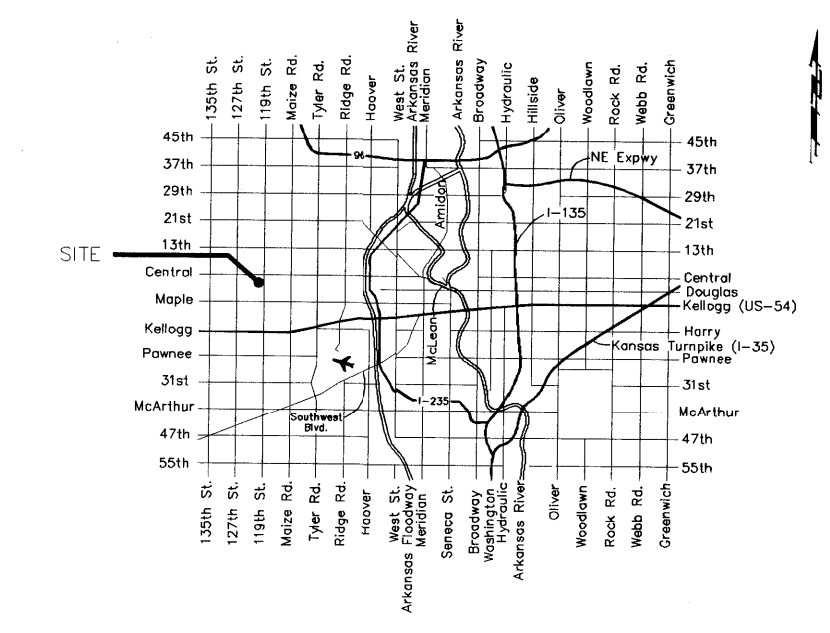
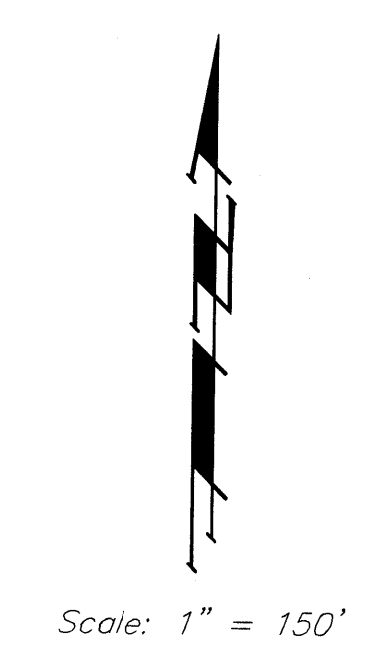
GENERAL NOTES:

- Contractor will be required to provide notice to utility companies a minimum of forty-eight (48) hours prior to any excavation, as follows:
 Kansas One-Call 687-2470
 The Contractor must notify the following in case of an emergency:
 Cox Communications 262-4270
 Kansas Gas Service Company 1-888-482-4950
 Westar Energy (Electric) 383-8650
 Black Hills Energy (Gas) 1-800-303-0357
 AT&T 1-800-286-8313
 City of Wichita Water Dept. (Water) 262-6000
 City of Wichita Sewer Maint. (SS) 262-6000
 City of Wichita Storm Sewer Maint. 268-4090
 City of Wichita Traffic Maint. 268-4034
- All disturbed R/W areas not intended for pavement or sidewalk construction shall be seeded with Kansas Premium Fescue Blend at a rate of 8 lb./1000 Sq. Ft., fertilized with a 16-20-6 ratio at a rate of 4 lb./1000 Sq. Ft., and mulched with Prairie Hay at a rate of 92 lb./1000 Sq. Ft. Mulch shall be "patted" with forks or punched into soil to reduce loss due to wind.
- Utility service lines, poles, valve boxes, meters, et cetera are to be adjusted as necessary by others prior to construction unless the plans specifically call for their adjustment by the Contractor or unless the plans specifically identify a utility to be adjusted by its owner during construction. Existing utilities and their location, as shown on the plans, represent the best information obtainable for design and shall be field verified. The contractor will be required to work around existing utilities within the right-of-way which do not conflict with proposed construction.
- All sanitary sewers and appurtenances shall be installed in accordance with the most recent edition of City of Wichita, Kansas Standard Specifications for the Construction of City Projects.
- The Contractor shall give all property owners/tenants of developed property directly abutting the construction of this project a minimum of five (5) days notice prior to start of construction.
- Contractor shall not start work on the project until the project inspector is assigned to the project and is present on the site. Contractor shall not start on the project until all necessary bonds and permits have been obtained. Bonds may include but are not limited to Statutory, Performance & Maintenance for areas in public right-of-way and easement. For projects within the City of Wichita contact Tom Mason (268-4574). Any work done without inspection will be required to be uncovered for inspection.
- Rubble from the removal of miscellaneous structures and excess excavation which is to be wasted shall be disposed of on sites to be provided by the Contractor. These sites shall be approved by the Engineer as to suitability, appearance and site location. Locations that, in the opinion of the Engineer, will leave an unsightly appearance will not be approved. All disposal sites must be approved by the Kansas Department of Health and Environment. Material either stockpiled or disposed of in a flood plain would require a Kansas State Board of Agriculture permit. Any material dumped in waters of the United States or wetlands is subject to U.S. Corps. of Engineers permitting regulations. Any material buried or stockpiled beyond approved construction limits would require additional archaeological investigations unless buried in a previously approved borrow location.
- The Contractor shall be responsible for maintaining continuous flow of sewage through construction. Contractor's proposed method for maintaining sewage flow shall be approved by the Engineer. Cost of maintaining flow of sewage through construction will not be paid for directly and this cost shall be considered as subsidiary to the other pay items of work.
- Contractor shall furnish the inspector with a copy of the manufacturer's certification for any pipe used on this project after completion of pipe installation. The engineer will not certify the project to the city until pipe certification has been received.



PROJECT AREA

Benefit District:



VICINITY MAP

BENCHMARKS:

- BENCHMARK:
- "□" Cut in South Side of Hardtner Cir., 40' East of end of Existing Pavment, or 10' East and 14.5' North of Northwest corner of Lot 18, Block A.
Elev. = 145.85 (City Datum)
 - "□" Cut in Top of Curb Adjacent to the Southeast Corner of Lot 1, Block A.
Elev. = 147.34 (City Datum)

INDEX:

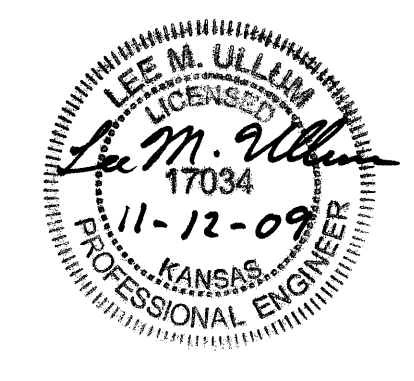
Title Sheet	1
Line 1	2
Line 1A, 1B, & 1C	3
Erosion Control Plan	4
Copy of Plat	5
Standard Manhole Detail	Available On Request
Ring & Cover Detail	Available On Request
Erosion Control BMPs	Available On Request

APPROVED AS NOTED
 BY CITY ENGINEER OF WICHITA

Sanitary Sewers *Juliano Kellman 11-12-09*

NOTE TO CONTRACTORS

Inspection and testing for this project is to be provided by a Licensed Consulting Engineering Firm under contract with the Owner/Developer. Said inspection to be in accordance with the City of Wichita standard construction engineering practices and certified by a Licensed Professional Engineer. No work shall be performed in dedicated easements or public right-of-way by the Contractor without such inspection nor shall any work be commenced without written authorization by the City Engineer. All Construction and Materials shall comply with the City of Wichita Specifications and Standards (on file and available in the City Engineer's Office).



BENCHMARK:
 1. "□" Cut in South Side of Hardtner Cir., 40' East of end of Existing Pavement, or 10' East and 14.5' North of Northwest corner of Lot 18, Block A. Elev. = 145.85 (City Datum)
 2. "□" Cut in Top of Curb Adjacent to the Southeast Corner of Lot 1, Block A. Elev. = 147.34 (City Datum)

NUMBER	TYPE	LOCATION			FOR INFORMATION ONLY	
		LOT NO.	BLOCK NO.	LINE NO.	STATION\ DIRECTION	APPROXIMATE LENGTH 6" PIPE
1	8" X 4" Tee	7	A	1	6+14.9/Lt.	6.7' 14'
2	8" X 4" Tee	6	A	1	6+93.3/Lt.	7.8 5'
3	8" X 4" Tee	5	A	1	7+70.8/Lt.	6.7' 20'
4	8" X 4" Tee	4	A	1	8+42.8/Lt.	5.4' 8'

NOTE: Vertical Riser Pipe shall be extended to 2' minimum above ground water elevation and 4' maximum below proposed ground elevation.

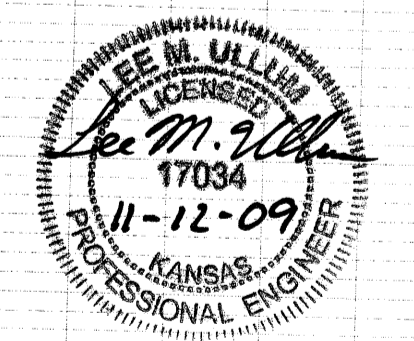
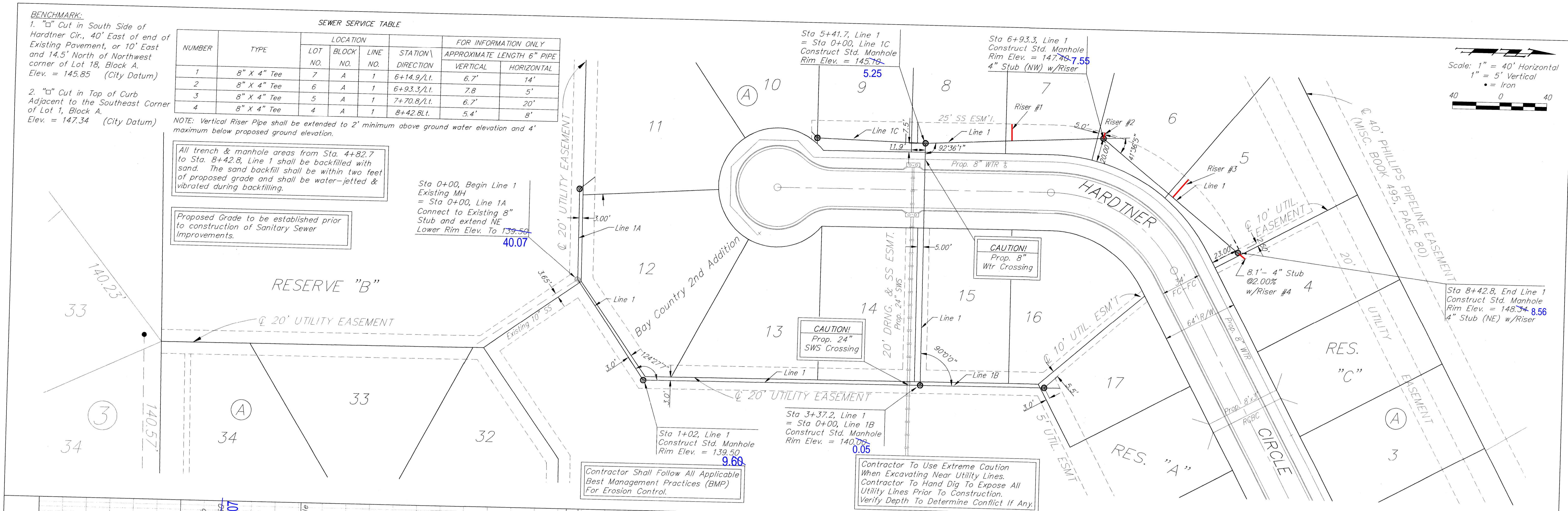
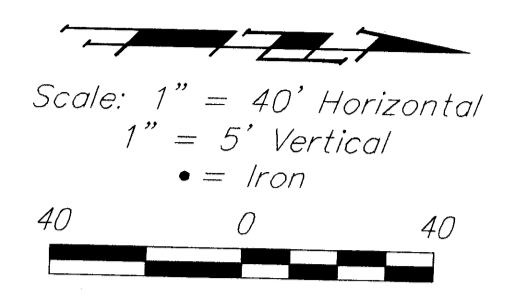
All trench & manhole areas from Sta. 4+82.7 to Sta. 8+42.8, Line 1 shall be backfilled with sand. The sand backfill shall be within two feet of proposed grade and shall be water-jetted & vibrated during backfilling.

Proposed Grade to be established prior to construction of Sanitary Sewer Improvements.

Sta 0+00, Begin Line 1 Existing MH = Sta 0+00, Line 1A Connect to Existing 8" Stub and extend NE Lower Rim Elev. To 139.50

Contractor Shall Follow All Applicable Best Management Practices (BMP) For Erosion Control.

Contractor To Use Extreme Caution When Excavating Near Utility Lines. Contractor To Hand Dig To Expose All Utility Lines Prior To Construction. Verify Depth To Determine Conflict If Any.



Baughman BAY COUNTRY 2ND ADDITION
LINE 1
 SANITARY SEWER IMPROVEMENTS

Baughman Company, P.A. 315 Ellis St. Wichita, KS 67211 P 316-262-7171 F 316-262-0149
 ENGINEERING | SURVEYING | PLANNING | LANDSCAPE ARCHITECTURE

PROJECT NUMBER	DESIGN: LU	DRAWN: JRW
REVISIONS:	APPROVED: LU	DATE: 11/09
	SCALE: Noted	SHEET: 2 OF 5

E:\eng\Bay Country 2nd - Hardtner Cir\SS 64-08\0203SS-IR4.dwg 08-05-12

BENCHMARK:
 1. "□" Cut in South Side of Hardtner Cir., 40' East of end of Existing Pavement, or 10' East and 14.5' North of Northwest corner of Lot 18, Block A. Elev. = 145.85 (City Datum)
 2. "□" Cut in Top of Curb Adjacent to the Southeast Corner of Lot 1, Block A. Elev. = 147.34 (City Datum)

SEWER SERVICE TABLE

NUMBER	TYPE	LOCATION			STATION\ DIRECTION	FOR INFORMATION ONLY	
		LOT NO.	BLOCK NO.	LINE NO.		APPROXIMATE LENGTH 6" PIPE	VERTICAL
5	8" X 4" Tee	8	A	1C	0+06.9/Rt.	6.1'	17'
6	8" X 4" Tee	9	A	1C	0+16.9/Rt.	6.0'	17'
7	8" X 4" Tee	10	A	1C	0+91.9/Rt.	4.8'	7'

NOTE: Vertical Riser Pipe shall be extended to 2' minimum above ground water elevation and 4' maximum below proposed ground elevation.

All trench & manhole areas from Sta. 0+00 to Sta. 0+91.9, Line 1C shall be backfilled with sand. The sand backfill shall be within two feet of proposed grade and shall be water-jetted & vibrated during backfilling.

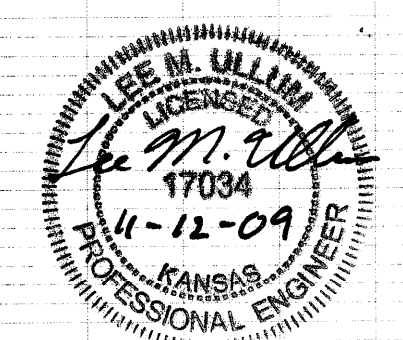
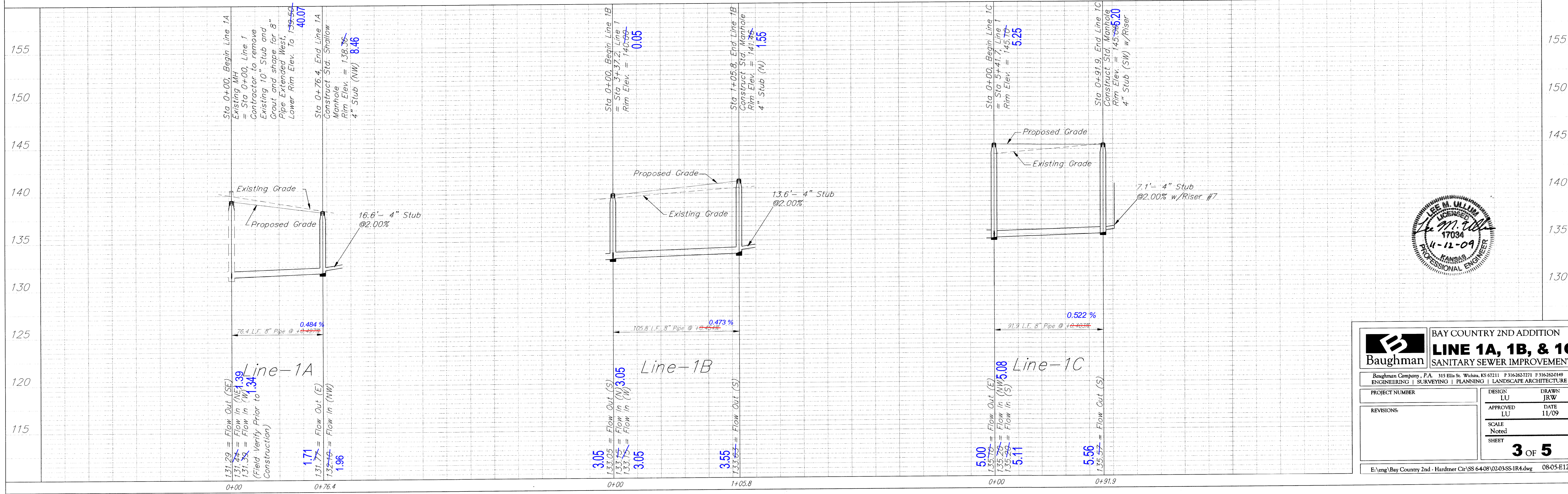
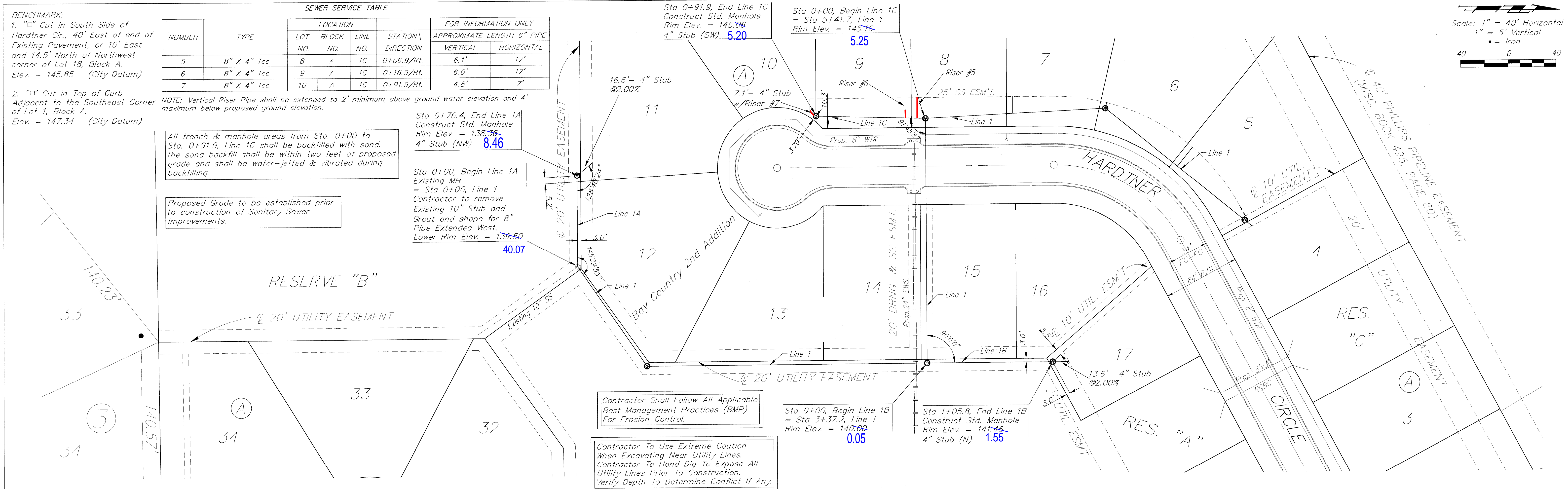
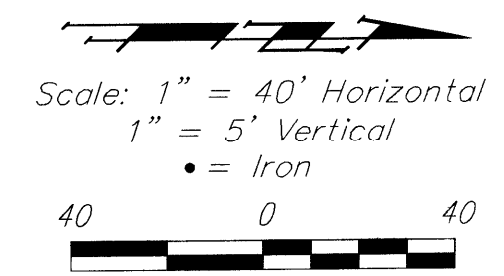
Proposed Grade to be established prior to construction of Sanitary Sewer Improvements.

Sta 0+76.4, End Line 1A
 Construct Std. Manhole
 Rim Elev. = 138.76
 4" Stub (NW) **8.46**

Sta 0+00, Begin Line 1A
 Existing MH
 = Sta 0+00, Line 1
 Contractor to remove Existing 10" Stub and Grout and shape for 8" Pipe Extended West,
 Lower Rim Elev. = 139.50
40.07

Contractor Shall Follow All Applicable Best Management Practices (BMP) For Erosion Control.

Contractor To Use Extreme Caution When Excavating Near Utility Lines. Contractor To Hand Dig To Expose All Utility Lines Prior To Construction. Verify Depth To Determine Conflict If Any.



Baughman BAY COUNTRY 2ND ADDITION
LINE 1A, 1B, & 1C
 SANITARY SEWER IMPROVEMENTS

Baughman Company, P.A. 315 Ellis St. Wichita, KS 67211 P 3162627271 F 3162620149
 ENGINEERING | SURVEYING | PLANNING | LANDSCAPE ARCHITECTURE

PROJECT NUMBER	DESIGN LU	DRAWN JRW
REVISIONS:	APPROVED LU	DATE 11/09
	SCALE Noted	SHEET

3 OF 5