

PRIVATE STORM WATER SEWER AND SANITARY SEWER EXTENSIONS

TO SERVE

LOT 1, BLOCK 1, REGENCY LAKES COMMERCIAL 2ND ADDITION

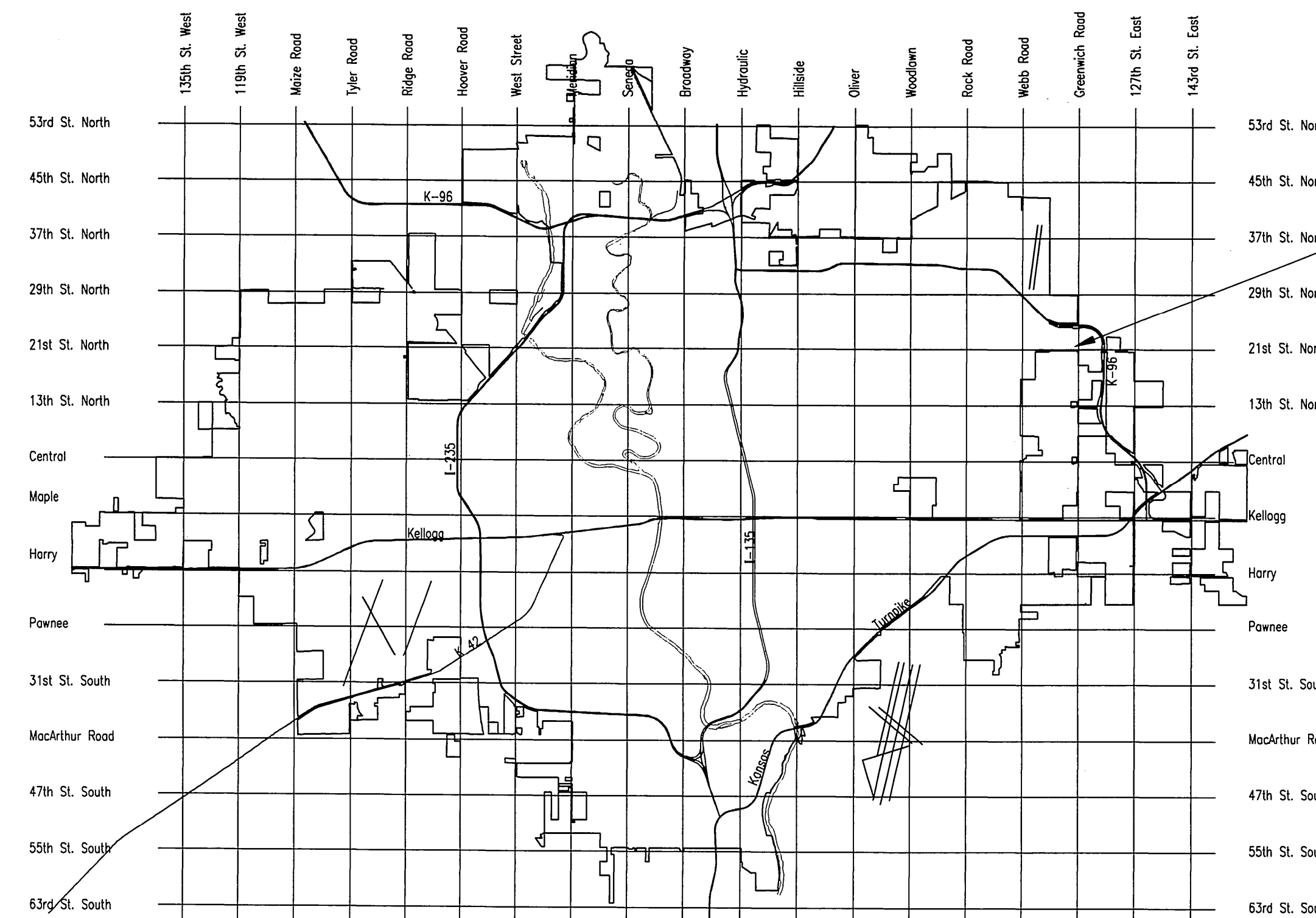
PRIVATE PROJECT NO. 1928 PPS (607861)

CITY OF WICHITA, KANSAS

JAMES L. ARMOUR, P.E. - CITY ENGINEER

INDEX OF SHEETS

SHEET NO. C2.1	TITLE SHEET
SHEET NO. C2.2	KEY MAP AND GENERAL NOTES
SHEET NO. C2.3	STORM WATER SEWER AND SANITARY SEWER PLAN AND PROFILE
SHEET NO. C2.4	TYPE 1 CURB INLET
SHEET NO. C2.5	8" CLEANOUT RISER ASSEMBLY DETAIL
SHEET NO. C2.6	10" CLEANOUT RISER ASSEMBLY DETAIL
SHEET NO. C2.7	VERTICAL RISER DETAIL
SHEET NO. C2.8	PLAT



PROJECT SITE
LOT 1, BLOCK 1, REGENCY LAKES
COMMERCIAL 2ND ADDITION

Cleanout Riser
Release Date: 10/21/2009
:APRosas 10/21/2009

As Built Plans:
CONTRACTOR: Boardman Enterprises
INSPECTOR: Larry Gann
COMPANY: K E Miller Engineering
.PDF by: NWS, 10-12-09

APPROVED AS NOTED
By CITY ENGINEER OF WICHITA

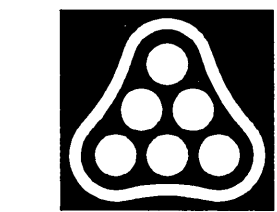
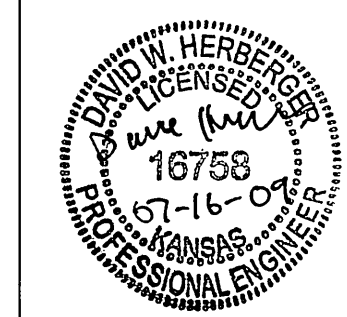
Sanitary Sewers *Julianne Kallman 7-14-09*
Storm Sewers *Julianne Kallman 7-14-09*
Driveway Approaches _____
Paving _____

NOTE TO CONTRACTOR

INSPECTION AND TESTING FOR THIS PROJECT IS TO BE PROVIDED BY A LICENSED CONSULTING ENGINEERING FIRM CONTRACTED BY THE OWNER/DEVELOPER. SAID INSPECTION TO BE IN ACCORDANCE WITH THE CITY OF WICHITA STANDARD CONSTRUCTION ENGINEERING PRACTICES AND CERTIFIED BY A LICENSED PROFESSIONAL ENGINEER. NO WORK SHALL BE PERFORMED IN DEDICATED EASEMENTS OR PUBLIC RIGHT-OF-WAY BY THE CONTRACTOR UNTIL SUCH INSPECTION IS ARRANGED FOR AND REQUIRED BONDS HAVE BEEN SUBMITTED TO AND APPROVED BY THE CITY. NOR SHALL ANY WORK BE COMMENCED IN DEDICATED EASEMENTS OR PUBLIC RIGHT-OF-WAY WITHOUT WRITTEN AUTHORIZATION BY THE CITY ENGINEER. IMPROVEMENTS PERFORMED UNDER THIS PROJECT SHALL NOT BE ACCEPTED BY THE CITY UNTIL ALL APPLICABLE DOCUMENTATION HAS BEEN SUBMITTED TO THE CITY ENGINEER. THIS MAY INCLUDE: RECORD DRAWINGS, INSPECTION LOGS, TEST DOCUMENTATION, TV TAPES, AND A CERTIFICATE OF COMPLETION. THE ABOVE SHALL BE PERFORMED BY THE CONSULTING FIRM CONTRACTED TO INSPECT THIS PROJECT.

OCTOBER 2008

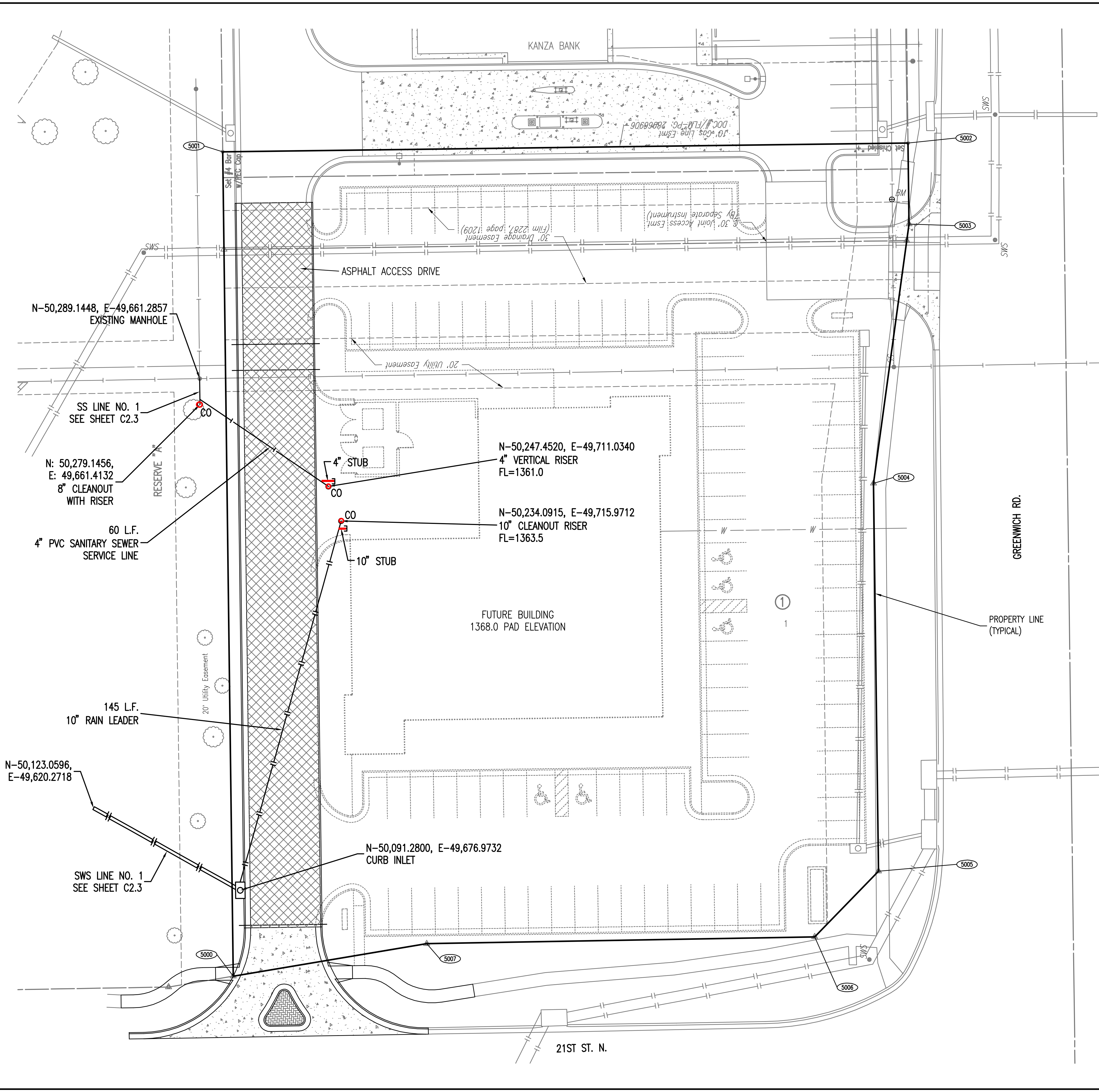
PLANS PREPARED BY
PROFESSIONAL ENGINEERING CONSULTANTS, P.A.
ENGINEERS
WICHITA, KANSAS



No.	Revision	By	Date
	LOT 1, BLK. 1, REGENCY LAKES COMMERCIAL 2ND ADDITION PRIVATE STORM WATER SEWER AND SANITARY SEWER EXTENSIONS		
TITLE SHEET			
JAMES L. ARMOUR, P.E. - CITY ENGINEER CITY OF WICHITA PRIVATE PROJECT NO. 1928 PPS (607861)			
Professional Engineering Consultants, P.A. 303 S. TOPEKA • WICHITA, KANSAS 67202 316-262-2691 • FAX 316-262-3003			
Designed by	RMH	Job No.	08629
Drawn by	AEE	Date	OCTOBER 2008
			Sht. C2.1

Saved: 06-29-2009 8:07:46 AM by: AEE
 Plot Scale: 1:1 06-29-2009 8:16:48 AM
 C:\2008\08629\PPS\08629 C2.1 TITLE

Served 07-17-2009 2:33:42 PM by AEE
 Plot Scale 1:20 07-17-2009 2:51:01 PM
 G:\2009\08629\PPS\08629 C2.2 KEY MAP AND GENERAL NOTES



BENCHMARK BM
 CHISELED "d", TOP OF CURB, NORTH SIDE OF ENTRANCE, WEST SIDE OF GREENWICH ROAD, 345 FEET ± NORTH OF 21ST STREET NORTH, AT BACK OF SIDEWALK GOING NORTH.
 ELEVATION 1363.90 NGVD29

LEGEND
 (5000) = COORDINATE POINT NO.

CONTROL POINTS
 C.P. 5000: N-50,058.0689, E-49,674.2341 #5 Bar, B. Ward
 C.P. 5001: N-50,376.8766, E-49,670.1687 #4 Bar, P.E.C.
 C.P. 5002: N-50,380.2554, E-49,935.1472 Chiseled "+"
 C.P. 5003: N-50,348.9248, E-49,935.5467 Chiseled "+"
 C.P. 5004: N-50,248.6697, E-49,921.8239 Chiseled "+"
 C.P. 5005: N-50,098.6827, E-49,923.7364 Chiseled "+"
 C.P. 5006: N-50,073.2480, E-49,899.0590 #4 Bar
 C.P. 5007: N-50,070.6279, E-49,749.0791 #5 Bar, MKEC

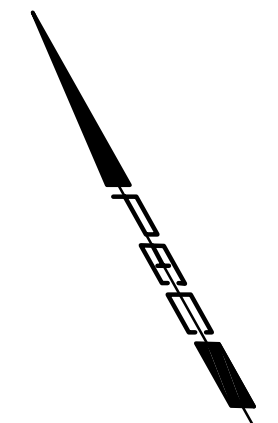
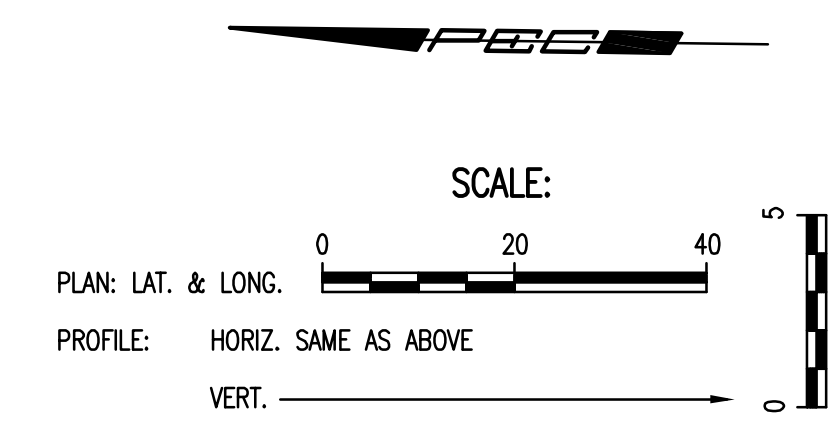
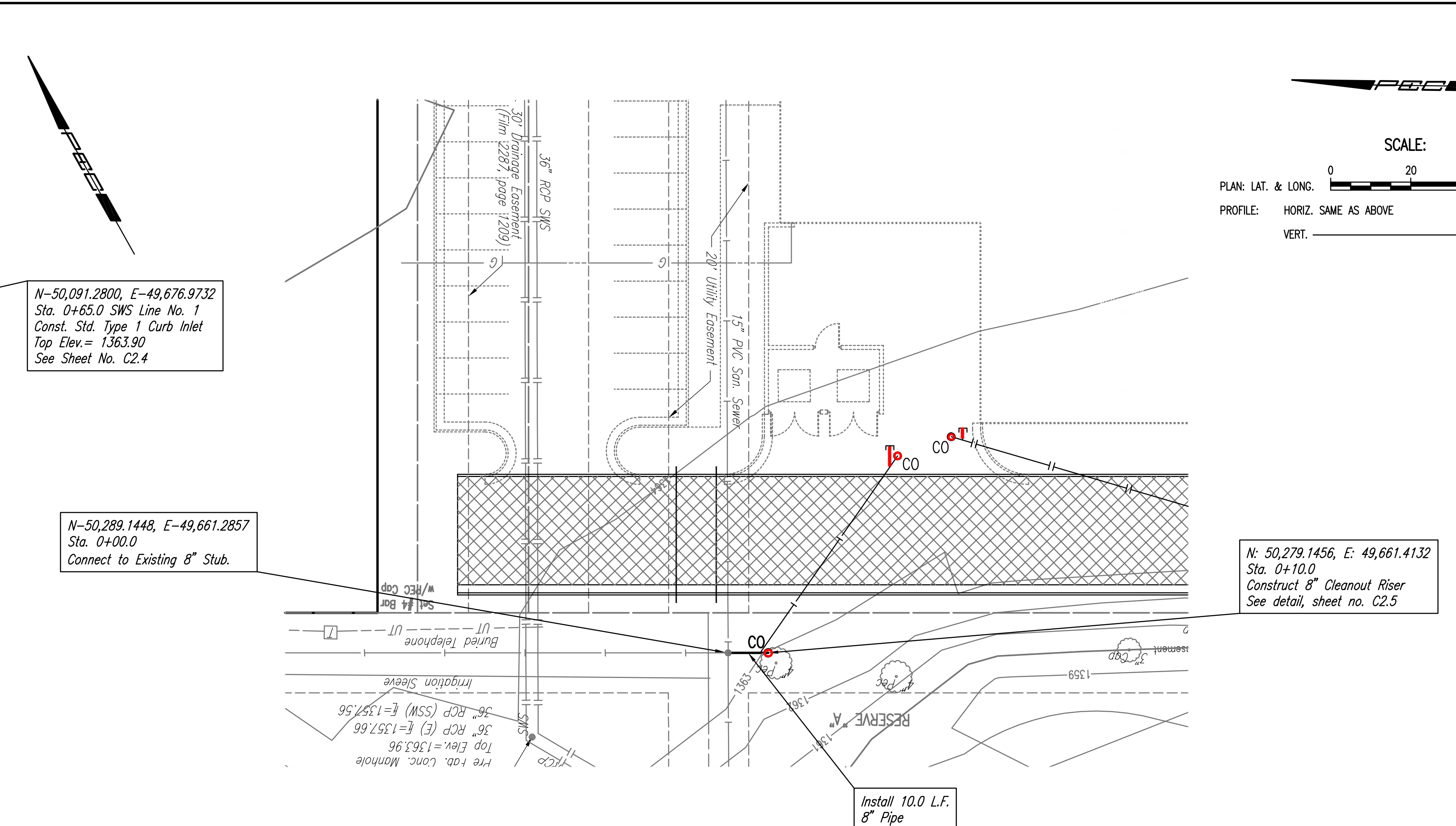
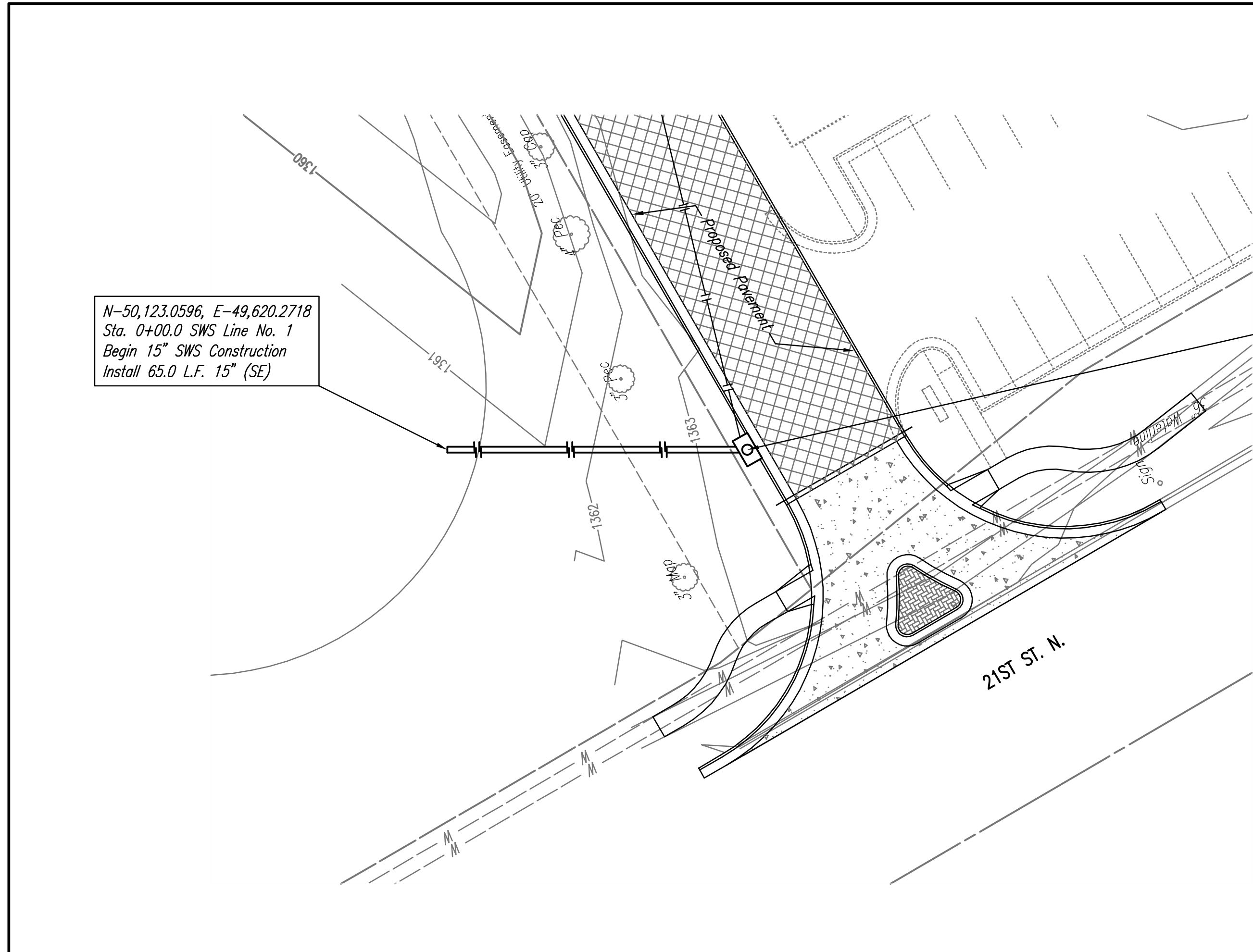
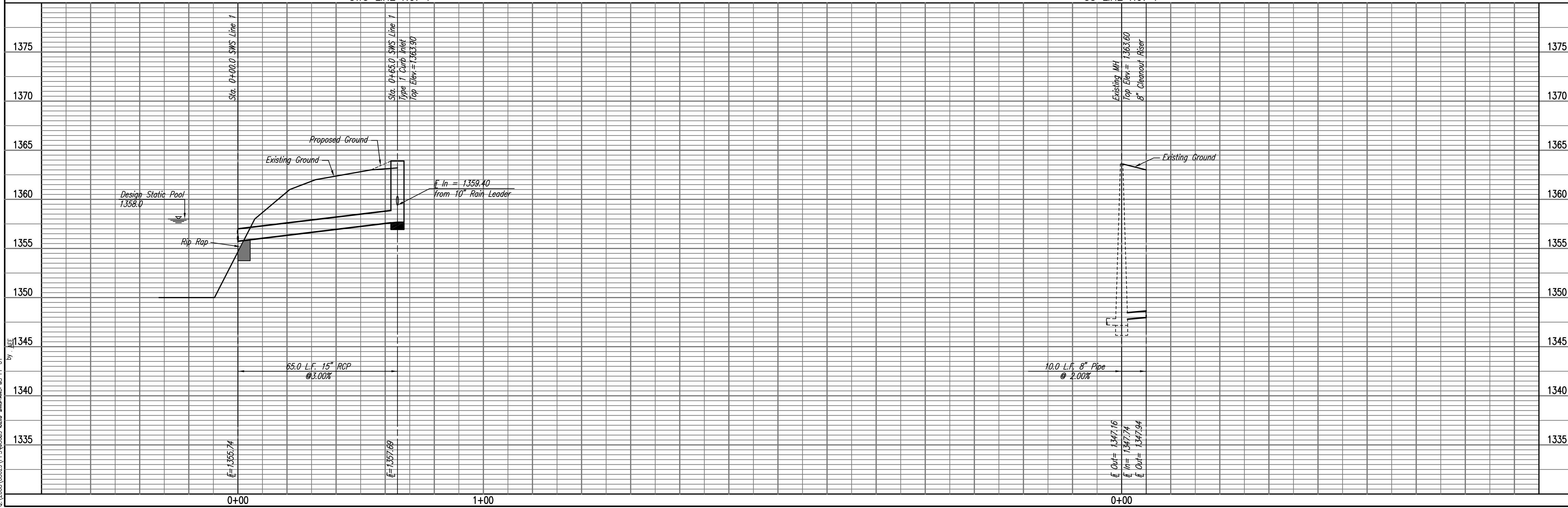
- GENERAL NOTES**
- ALL CONSTRUCTION AND MATERIALS TO COMPLY WITH CITY OF WICHITA SPECIFICATIONS AND STANDARDS.
 - ALL ELEVATIONS SHOWN ARE NGVD29 DATUM.
 - THE CONTRACTOR SHALL LIMIT THE EXTENT OF TRENCH TO REMAIN OPEN OVERNIGHT AND WEEKENDS TO LESS THAN 50 FEET.
 - AT LEAST 72 HOURS PRIOR TO BEGINNING EXCAVATION (EXCLUDING WEEKENDS AND HOLIDAYS), THE CONTRACTOR SHALL CONTACT THE KANSAS ONE-CALL SYSTEM, A UTILITY LOCATION SERVICE, AT (316) 687-2470 TO REQUEST THE LOCAL UTILITY COMPANIES MARK ANY EXISTING LINES WITHIN THE PROJECT AREA.
 - UNDERGROUND UTILITY SERVICE LINES AND OVERHEAD UTILITY POLE LINES ARE TO BE ADJUSTED AS NECESSARY BY OTHERS PRIOR TO CONSTRUCTION UNLESS THE PLANS SPECIFICALLY CALL FOR THEIR ADJUSTMENT BY THE CONTRACTOR OR UNLESS THE PLANS SPECIFICALLY IDENTIFY A UTILITY TO BE ADJUSTED BY ITS OWNER DURING CONSTRUCTION. EXISTING UTILITIES AND THEIR LOCATIONS, AS SHOWN ON THE PLANS, REPRESENT THE BEST INFORMATION OBTAINABLE FOR THE DESIGN. THE CONTRACTOR WILL BE REQUIRED TO WORK AROUND EXISTING UTILITIES WITHIN THE RIGHT-OF-WAY WHICH DO NOT CONFLICT WITH PROPOSED CONSTRUCTION.
 - THE CONTRACTOR SHALL BE RESPONSIBLE FOR PRESERVING PROPERTY IRONS. THE CONTRACTOR WILL BE REQUIRED TO RE-ESTABLISH ANY PROPERTY IRONS WHICH ARE DAMAGED OR DESTROYED BY HIS CONSTRUCTION OPERATIONS. SUCH IRONS SHALL BE RE-ESTABLISHED BY A LICENSED LAND SURVEYOR IN ACCORDANCE WITH STATE LAWS.
 - RUBBLE FROM THE REMOVAL OF MISCELLANEOUS STRUCTURES INCLUDING ANY TREES REMOVED, TREE TRIMMINGS, AND EXCESS EXCAVATION WHICH IS TO BE WASTED SHALL BE DISPOSED OF ON SITES PROVIDED BY THE CONTRACTOR. THESE SITES SHALL ALSO BE APPROVED BY THE ENGINEER AS TO SUITABILITY, APPEARANCE, AND SITE LOCATION. LOCATIONS THAT, IN THE OPINION OF THE ENGINEER, WILL LEAVE AN UNSIGHTLY APPEARANCE WILL NOT BE APPROVED. ALL DISPOSAL SITES MUST BE APPROVED BY THE KANSAS DEPARTMENT OF HEALTH AND ENVIRONMENT. MATERIAL EITHER STOCKPILED OR DISPOSED OF IN A FLOOD PLAIN WILL REQUIRE A KANSAS STATE BOARD OF AGRICULTURE PERMIT. ANY MATERIAL DUMPED IN WATERS OF THE UNITED STATES OR WETLANDS IS SUBJECT TO U.S. CORPS OF ENGINEERS PERMITTING REGULATIONS. ANY MATERIAL BURIED OR STOCKPILED BEYOND APPROVED CONSTRUCTION LIMITS MAY REQUIRE ARCHAEOLOGICAL INVESTIGATIONS UNLESS BURIED IN A PREVIOUSLY APPROVED DISPOSAL LOCATION.
 - ALL LAWN/TURF AREAS DISTURBED BY CONSTRUCTION OF THE PROPOSED IMPROVEMENTS SHALL BE RESTORED WITH THE SAME GRASS/SOD AS EXISTING. RESTORATION OF DISTURBED AREAS SHALL INCLUDE, BUT NOT BE LIMITED TO, TOP SOIL PREPARATION, SEEDING, MULCH, AND/OR RESEEDING. ALL SEEDING/SODDING WORK SHALL BE IN ACCORDANCE WITH THE CITY OF WICHITA STANDARD SPECIFICATIONS AND THE CITY OF WICHITA ADMINISTRATIVE REGULATION NO. AR78 WHICH GOVERNS CLEANUP AND RESTORATION OR REPLACEMENT FOLLOWING CONSTRUCTION.
 - THE CONTRACTOR SHALL SEED ALL AREAS DISTURBED BY CONSTRUCTION ACTIVITIES WITH TEMPORARY RYE GRASS. RYE GRASS SEED SHALL BE PLANTED AT A MINIMUM RATE OF SIX (6) POUNDS PER ONE THOUSAND (1,000) SQUARE FEET. THIS TEMPORARY SEEDING MAY BE OMITTED ONLY IF OTHER SEEDING IS REQUIRED IN ACCORDANCE WITH GENERAL NOTE NO. 8 ABOVE. TEMPORARY SEEDING OR PERMANENT SEEDING/SODDING SHALL BE APPLIED WITHIN 14 DAYS AFTER THE AREA HAS BEEN DISTURBED.
 - THE CONTRACTOR SHALL AVOID REMOVAL OR TRIMMING OF ANY TREES OR SHRUBS WHERE POSSIBLE. WHERE THE CONTRACTOR BELIEVES THE REMOVAL OR TRIMMING IS UNAVOIDABLE, HE SHALL COORDINATE SUCH WORK WITH THE ENGINEER. COSTS FOR TREE/SHRUB REMOVAL AND TRIMMING REGARDLESS OF SIZE SHALL BE CONSIDERED SUBSIDIARY TO THE PROJECT.
 - THE CONTRACTOR SHALL GIVE ALL PROPERTY OWNERS AND/OR TENANTS OF DEVELOPED PROPERTY ABUTTING THE CONSTRUCTION OF THIS PROJECT A MINIMUM OF TEN (10) DAYS ADVANCE NOTICE PRIOR TO START OF CONSTRUCTION.
 - INTERURBAN TRAFFIC GENERATED OUTSIDE THE PROJECT AREA AND LOCAL BUSINESS OR RESIDENTIAL TRAFFIC GENERATED WITHIN THE PROJECT AREA ARE TO BE CARRIED THROUGH CONSTRUCTION AS FURTHER PROMULGATED BY PROJECT SPECIAL PROVISIONS. THE CONTRACTOR SHALL UTILIZE BARRICADES, SIGNS, GUARDS, AND FLAGMEN IN ACCORDANCE WITH THE MANUAL ON UNIFORM TRAFFIC CONTROL DEVICES.
 - THE CONTRACTOR SHALL USE JETTED SAND BACKFILL ON SANITARY AND STORM SEWER LINES CROSSING ACCESS DRIVE.

No.	Revision	By	Date
LOT 1, BLK. 1, REGENCY LAKES COMMERCIAL 2ND ADDITION PRIVATE STORM WATER SEWER AND SANITARY SEWER EXTENSIONS KEY MAP AND GENERAL NOTES JAMES L. ARMOUR, P.E. - CITY ENGINEER CITY OF WICHITA PRIVATE PROJECT NO. 1928 PPS (607861) Professional Engineering Consultants, P.A. 303 S. TOPKA • WICHITA, KANSAS 67202 316-262-2691 • FAX 316-262-3003			
Designed by	RMH	Job No.	08629
Drawn by	AEE	Date	OCTOBER 2008
			Sht. C2.2

PLAN	CHECKED	DATE
	CHECKED	

PROFILE	CHECKED	DATE
	CHECKED	

Saved: 07-17-2008 2:30:02 PM by AEE
 Plot Scale
 0, 2008 \08629\08629-2008 SWS-001\08629 PP 01



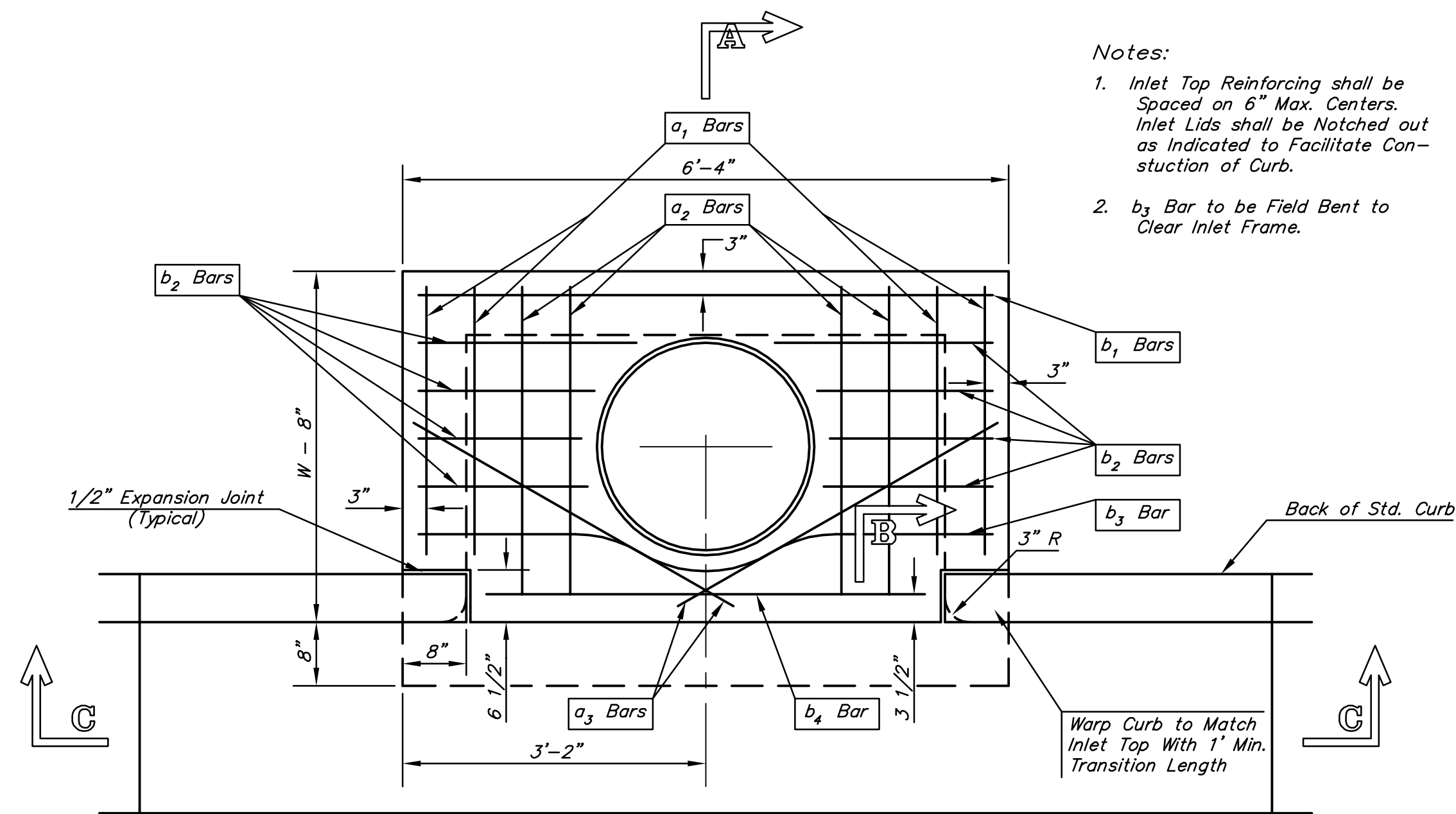
Professional Engineering Consultants, P.A.
 303 S. TORRENS, WICHITA, KANSAS 67202
 316-262-2091 • FAX 316-262-3003

Designed By RMH
 Drawn By AEE

Job No. 08629
 Date OCTOBER 2008

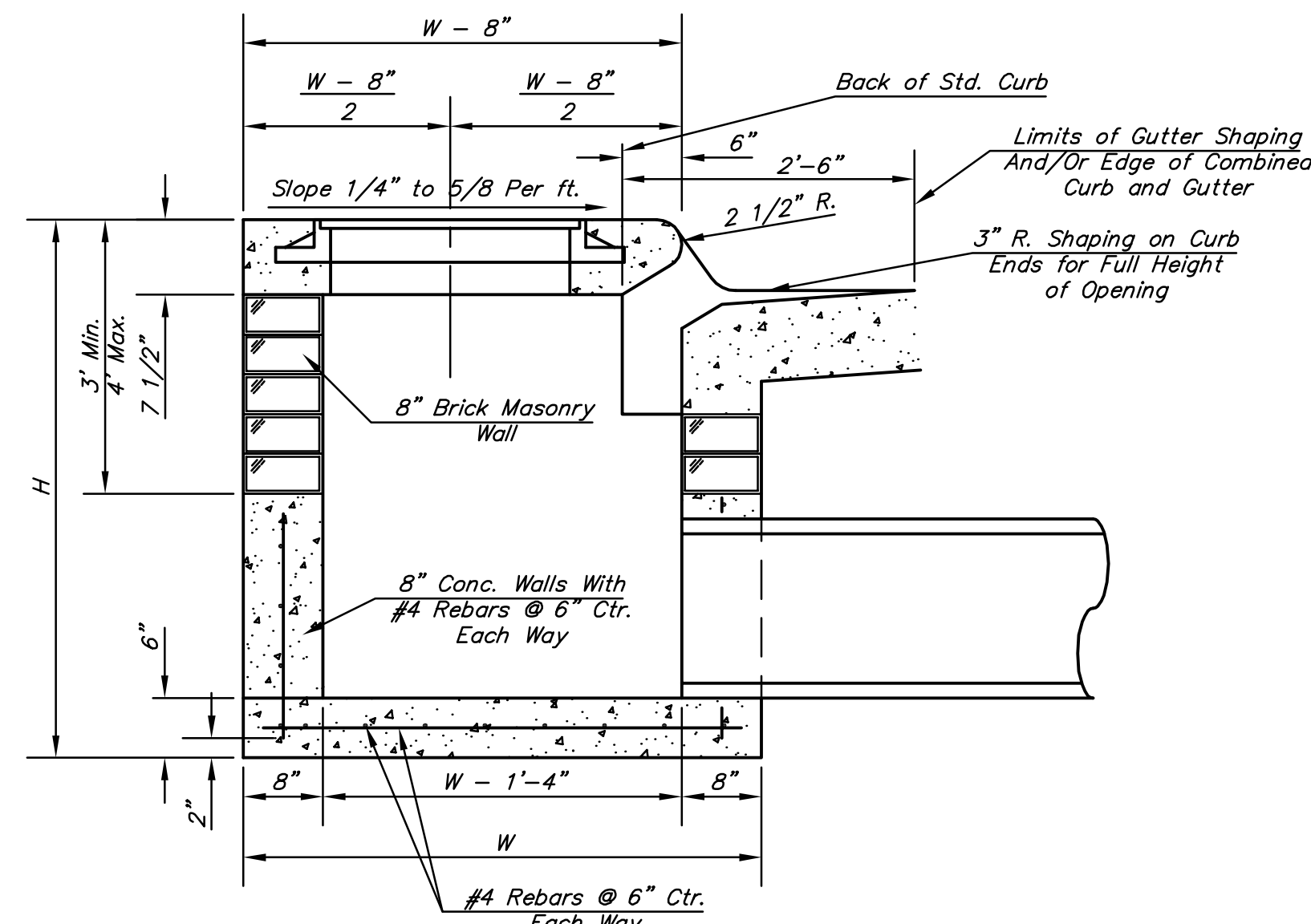
LOT 1, BLK. 1, REGENCY LAKES COMMERCIAL 2ND ADDITION
 PRIVATE STORM WATER SEWER AND SANITARY SEWER EXTENSIONS
 SWS LINE NO. 1 AND
 SS LINE NO. 1
 SANITARY SEWER LINE NO. 1
 JAMES L. ARMOUR, P.E. - CITY ENGINEER
 CITY OF WICHITA PRIVATE PROJECT NO. 1928 PPS (607861)

Sheet C2.3

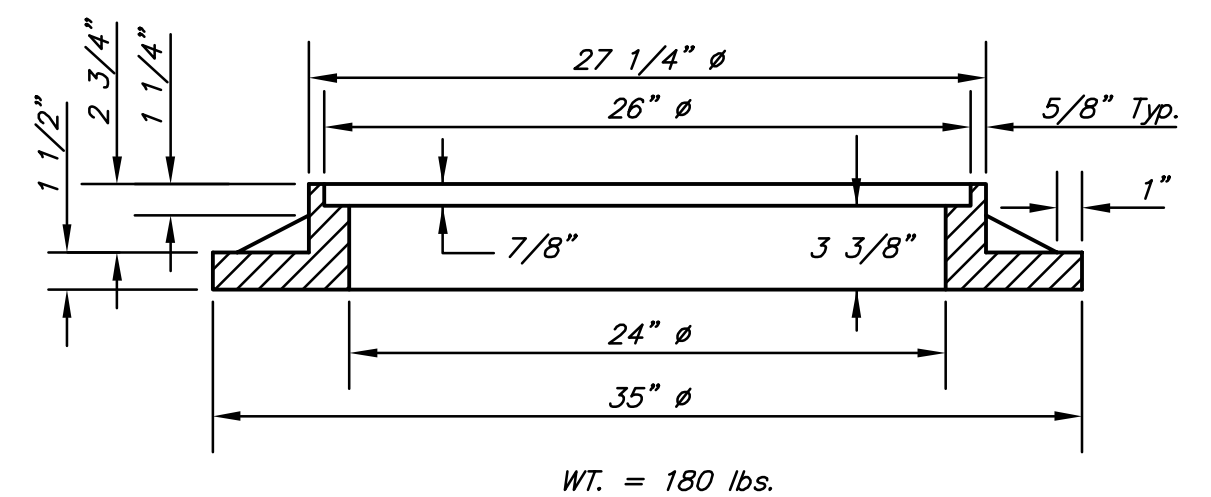
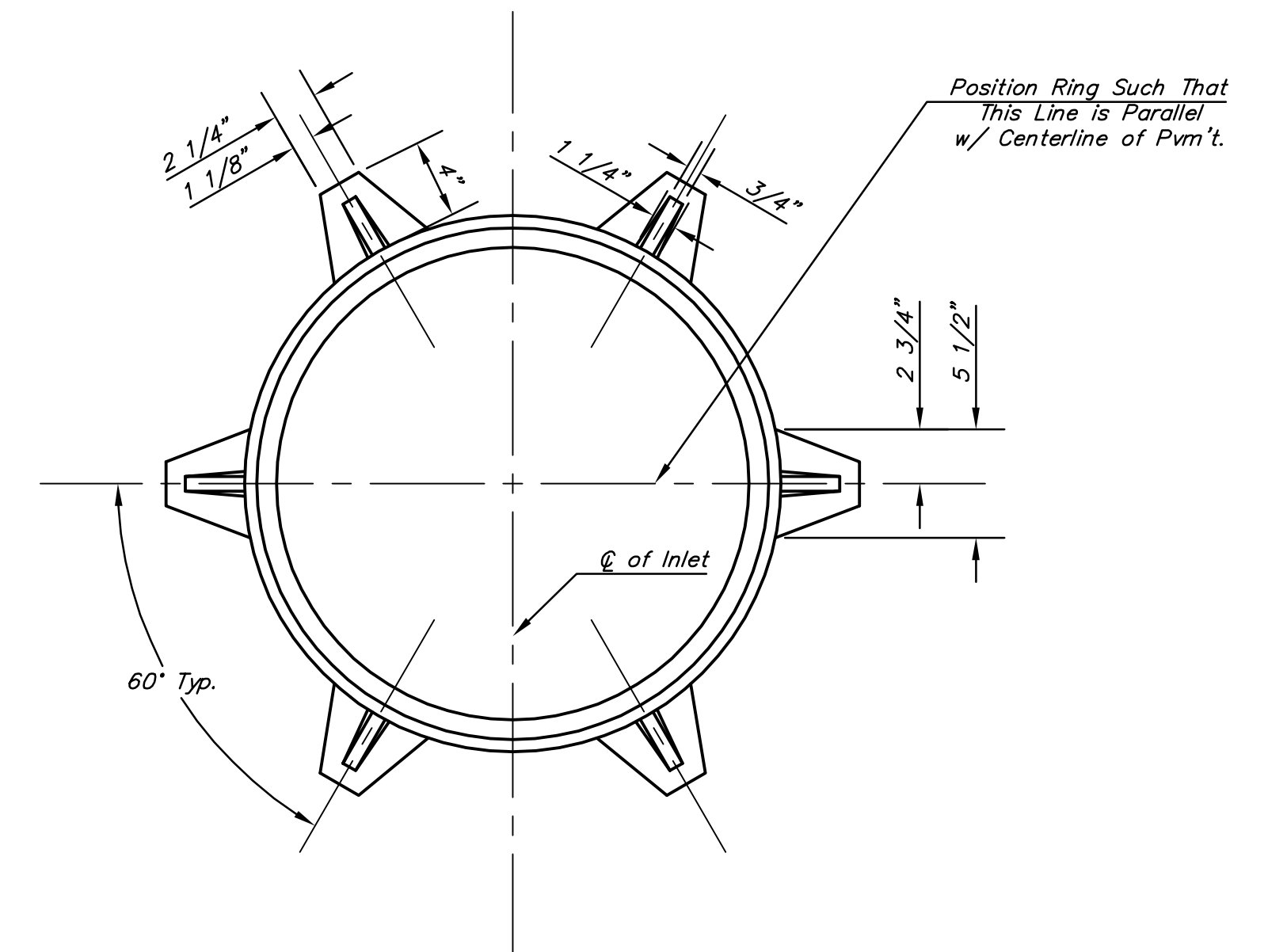


PLAN

- Notes:
- Inlet Top Reinforcing shall be Spaced on 6" Max. Centers. Inlet Lids shall be Notched out as Indicated to Facilitate Construction of Curb.
 - b₃ Bar to be Field Bent to Clear Inlet Frame.

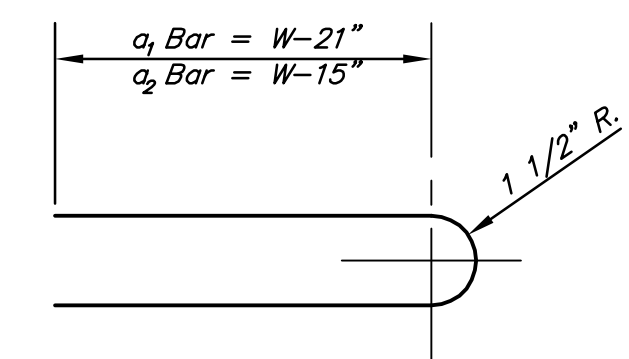


SECTION A-A

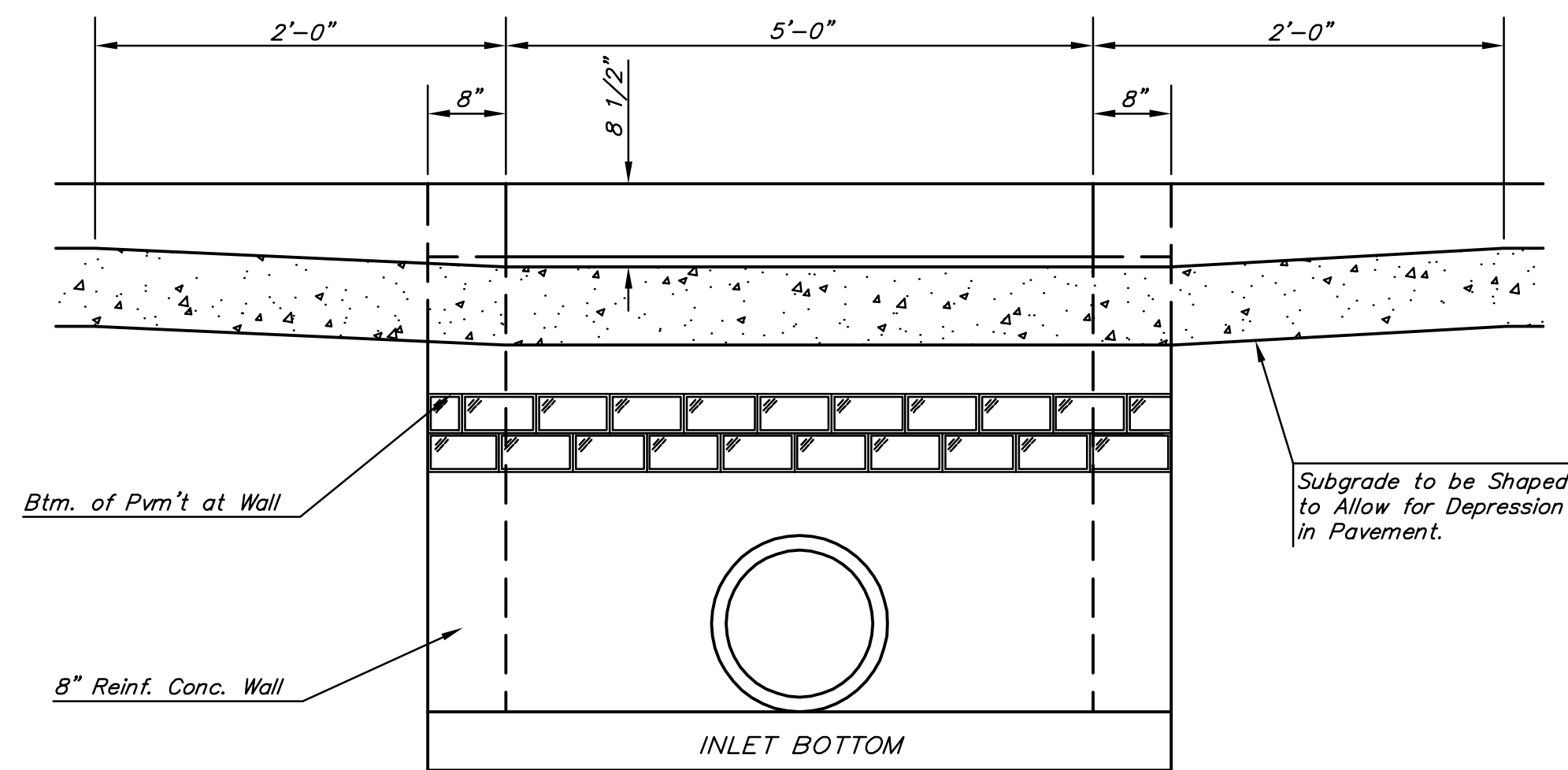


MANHOLE RING AND COVER

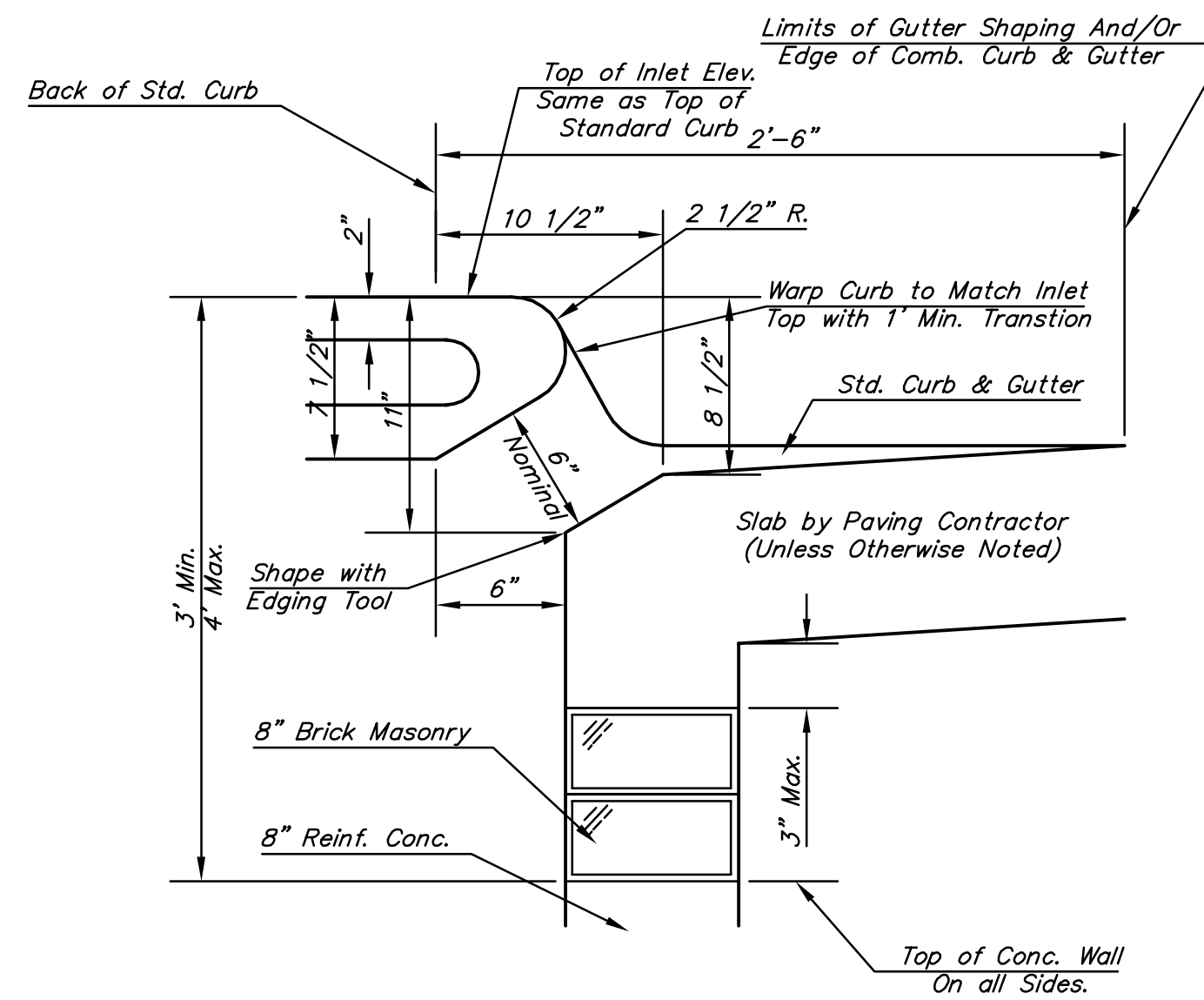
*See City of Wichita Standard Manhole Ring and Cover Detail Sheet for Cover Details to Be Used with Inlet Frame.



BENDING DIAGM



SECTION C-C



SECTION B-B

STEEL SCHEDULE

BAR	a ₁			b ₁					b ₂	b ₃	b ₄	Wt. Lbs.
	a ₁	a ₂	a ₃	W=4'-4"	W=5'-4"	W=6'-4"	W=7'-4"	W=8'-4"				
NUMBER	4	4	2	1	3	5	7	9	6	1	1	
SIZE	#4	#4	#4	#4	#4	#4	#4	#4	#4	#4	#6	
LENGTH	W=4'-4"	5'-7"	6'-7"	4'-0"	6'-1"	-	-	-	1'-9"	6'-2"	4'-8"	60±
	W=5'-4"	7'-7"	8'-7"	5'-0"	6'-1"	-	-	-	1'-9"	6'-2"	4'-8"	81±
	W=6'-4"	9'-7"	10'-7"	6'-0"	-	6'-1"	-	-	1'-9"	6'-2"	4'-8"	101±
	W=7'-4"	11'-7"	12'-7"	7'-0"	-	-	6'-1"	-	1'-9"	6'-2"	4'-8"	121±
	W=8'-4"	13'-7"	14'-7"	8'-0"	-	-	-	6'-1"	1'-9"	6'-2"	4'-8"	141±

Note: a₃ Bars to be Placed Approx. 2" Below Top of Inlet Cover.

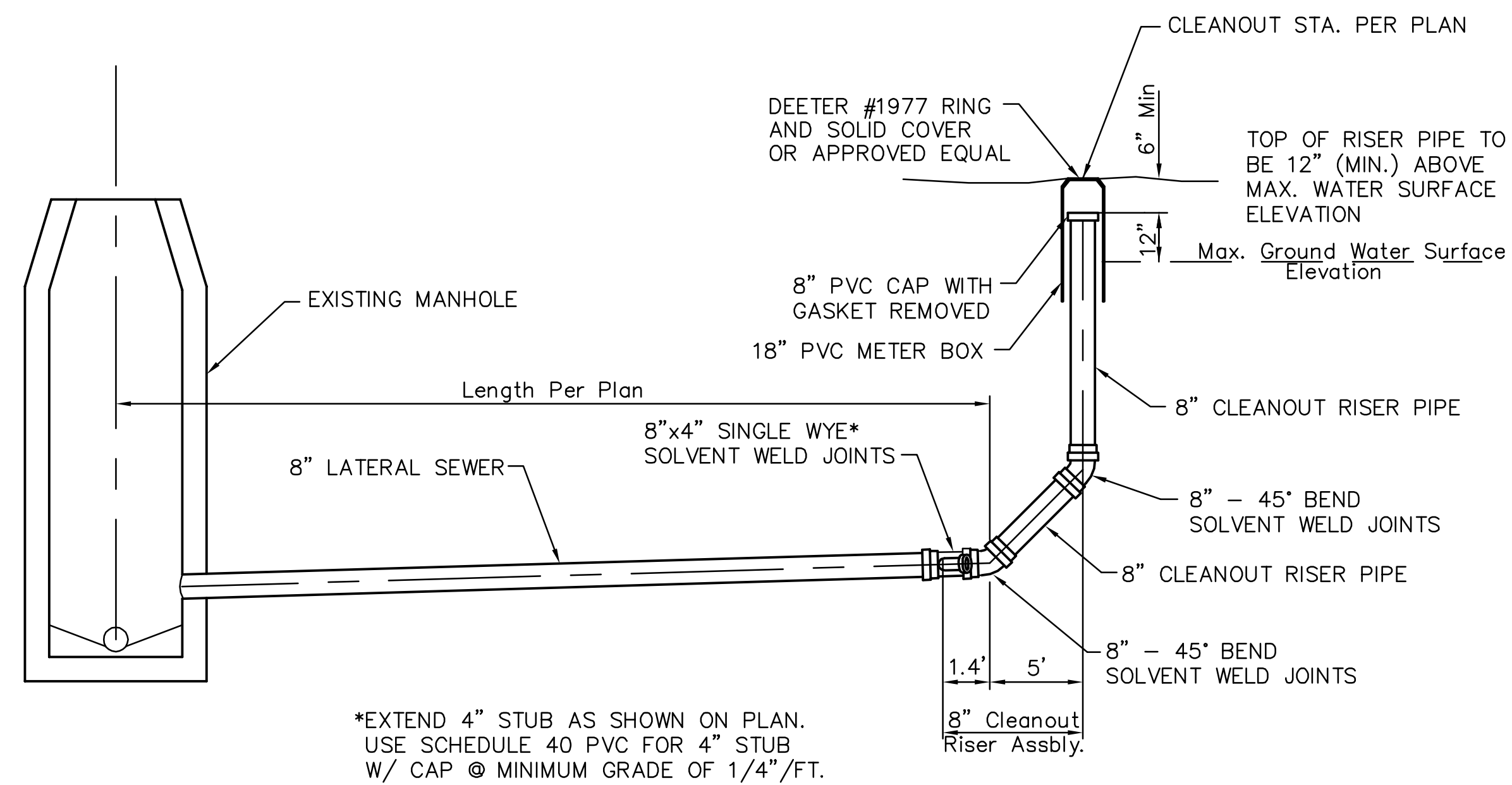
STANDARD CURB INLET PRECAST TOPS

W	PRE-CAST TOP SIZE	PIPE SIZE	CU. YD. CONC.
4'-4"	3'-8" 6'-4" 7 1/2"	21" & SMALLER	0.38±
5'-4"	4'-8" 6'-4" 7 1/2"	24" & 30"	0.51±
6'-4"	5'-8" 6'-4" 7 1/2"	36" & 42"	0.64±
7'-4"	6'-8" 6'-4" 7 1/2"	48" & 54"	0.77±
8'-4"	7'-8" 6'-4" 7 1/2"	60" & 66"	0.90±

GENERAL NOTES


- Concrete tops to be installed on thin mortar cushion to insure full support along brick walls. Concrete tops may be cast in place or precast. Concrete used for inlet construction shall be concrete pavement mix.
- Contractor shall have the option of constructing 8" brick masonry walls between the concrete inlet base and top on this inlet when W=6'-4" and H=7'-0" or less.
- Inlet invert shall be shaped with 8 sack sand mix concrete to create flow channels and to increase hydraulic efficiency such that the inlet will be self cleaning between all inlet and/or outlet pipes.
- The ends of all pipes installed in inlets shall be cut off flush with the inside face of the inlet wall.

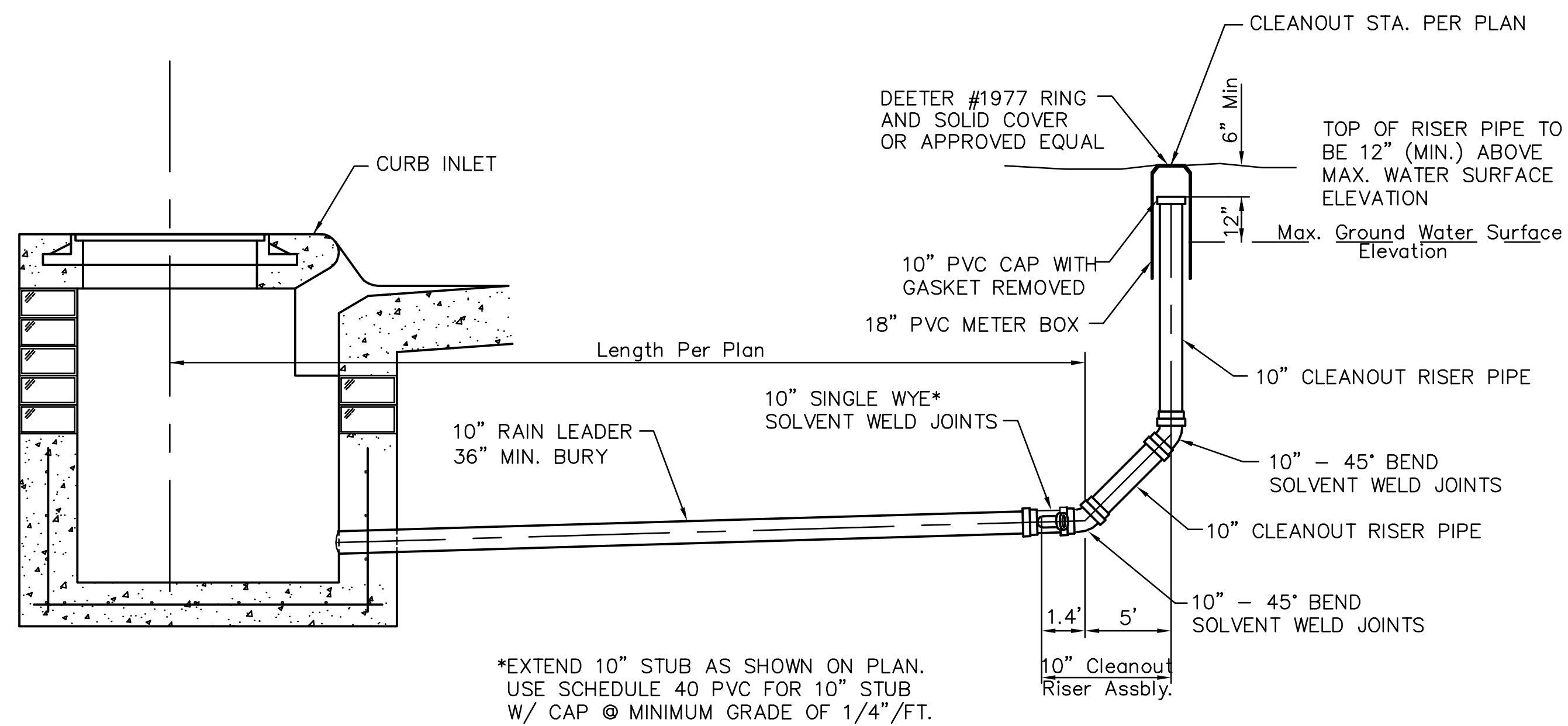
<p>THE CITY OF WICHITA</p> <p>CITY ENGINEER'S OFFICE CITY HALL - SEVENTH FLOOR 455 NORTH MAIN STREET WICHITA, KANSAS 67202 (316) 268-4901 (316) 268-4114 FAX</p>	<p>STANDARD TYPE 1 CURB INLET OPENING = 6" x 5'-0"</p>		
	<p>JAMES L. ARMOUR, P.E. - CITY ENGINEER</p>		
	<p>PROJECT NUMBER 1928 PPS (607861)</p>	<p>DATE OCT. 2008</p>	
	<p>C2.4</p>		



8" CLEANOUT RISER ASSEMBLY DETAIL


Saved: 07-17-2009 2:32:58 PM by AEE
 Plot Scale: 1:1 07-17-2009 2:33:47 PM
 G:\2009\08629\PPS\08629 C2.5 8IN CLEANOUT RISER by AEE

 <p>THE CITY OF WICHITA</p> <p>CITY ENGINEER'S OFFICE CITY HALL - SEVENTH FLOOR 455 NORTH MAIN STREET WICHITA, KANSAS 67202 (316) 268-4900 (316) 268-4114 FAX</p>	8" CLEANOUT RISER ASSEMBLY DETAIL	
	JAMES L. ARMOUR, P.E. - CITY ENGINEER	
	PROJECT NUMBER 1928 PPS (607861)	DATE OCT. 2008
		C2.5



10" CLEANOUT RISER
ASSEMBLY DETAIL

Saved: 07-17-2009 3:05:36 PM by AEE
 Plot Scale: 1:1 07-17-2009 3:06:21 PM
 G:\2009\08629\PPS\08629_C2.6_T01N_CLEANOUT RISER

 THE CITY OF WICHITA CITY ENGINEER'S OFFICE CITY HALL - SEVENTH FLOOR 455 NORTH MAIN STREET WICHITA, KANSAS 67202 (316) 268-4900 (316) 268-4114 FAX	10" CLEANOUT RISER ASSEMBLY DETAIL	
	JAMES L. ARMOUR, P.E. - CITY ENGINEER	
	PROJECT NUMBER	1928 PPS (607861)
	DATE	OCT. 2008
		C2.6

VERTICAL RISER DETAILS

ADOPTED AS STANDARD DESIGN

BY

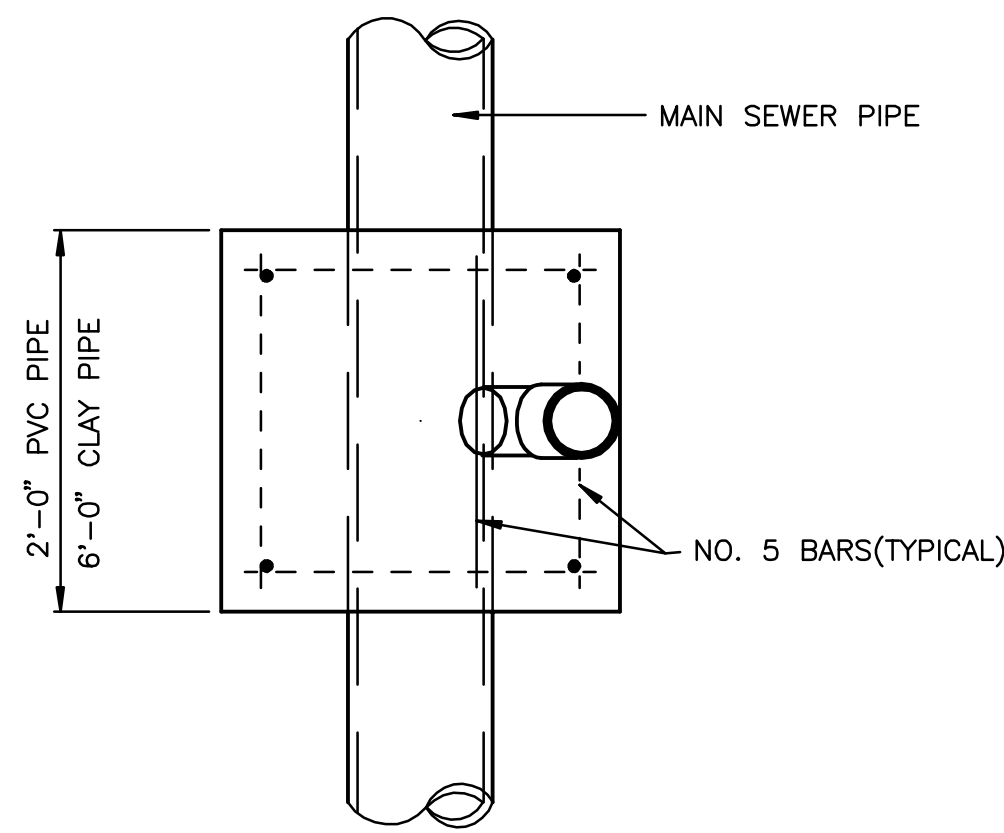
CITY OF WICHITA, KANSAS

OCTOBER 1992

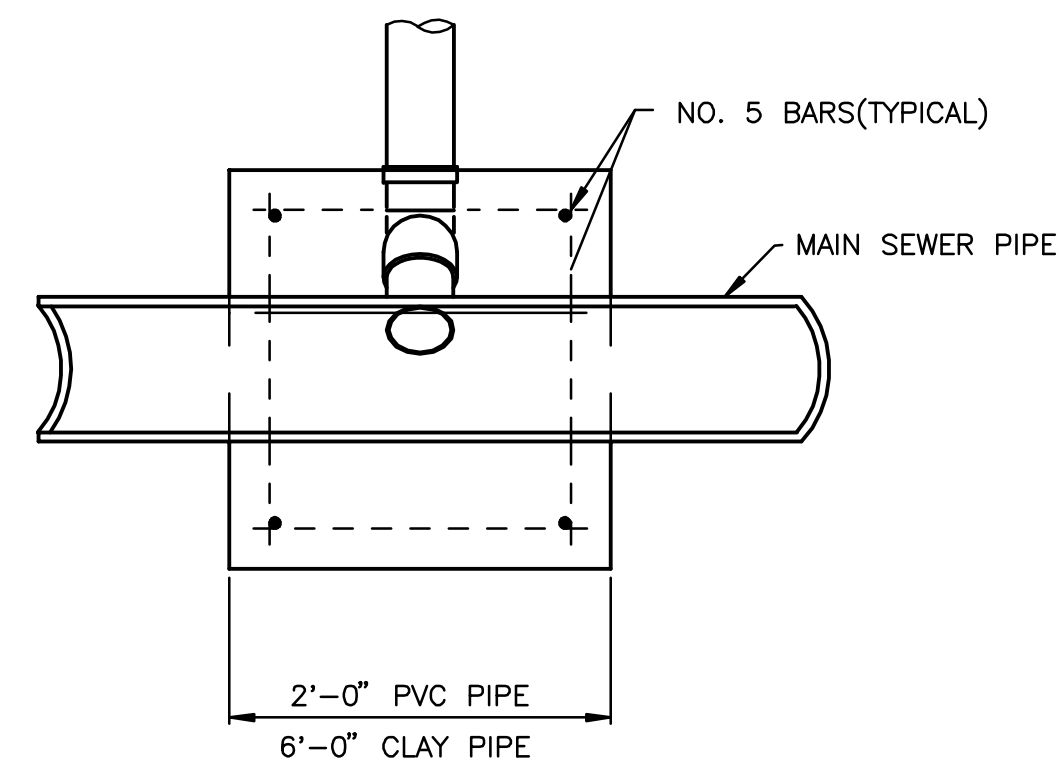
GENERAL NOTES

- RISERS.** Risers shall be installed to serve all lots or tracts where the sanitary sewer main is below the water table. Risers shall also be installed to serve all lots and tracts where the sanitary sewer main depth is greater than 12 feet below the proposed ground elevation. Installation of risers because of field conditions shall be as approved by the Construction Engineer. The location of the risers to serve developed property shall be approved by the property owner and the Construction Engineer.
- PIPE STUBS.** Pipe stubs shall be installed in manholes where locations of manholes will provide satisfactory service connection as determined by the Construction Engineer. The vertical distance between the flowline of the manhole pipe stub and the flowline of the sanitary sewer main out of the manhole shall not exceed 2 feet. Risers shall be utilized at manhole pipe stubs as indicated in Note 1. Manhole pipe stubs shall be set such that the top of the stub is not lower than the top of the sanitary sewer main.
- SIZING.** Pipe stubs and risers shall be sized according to the plans and riser table where risers are indicated by the plans. Where risers or pipe stubs are required because of field conditions, the risers and stubs shall be six-inch diameter for commercial or industrial properties and 4" or 6" diameter for residential properties, based on lot size and sanitary sewer main depth. Sizing of risers and stubs shall be approved by the Construction Engineer prior to installation.
- RISER OR STUB MATERIAL.** Risers and stubs shall be constructed of Schedule 40 PVC Pipe, meeting the requirements of the latest revision of A.S.T.M. All pipe joints shall be solvent welded.
- REINFORCED CONCRETE ENCASUREMENT.** Riser connections to clay pipe sanitary sewers shall be reinforced concrete encased both ways from the riser centerline. The reinforced concrete encasement shall extend three feet from the riser centerline or stop at the first sanitary sewer pipe joint within three feet of the riser centerline. Riser connections to PVC Sanitary Sewer mains shall be reinforced concrete encased one foot each way from the riser centerline. The concrete encasement shall be reinforced using reinforcing steel as shown in the appropriate drawing. The concrete shall conform to the City Standard Specifications for concrete pavement.
- BEDDING.** Bedding around the sanitary sewer riser shall be compacted Pipe Bedding Type 1 or 2. The bedding shall be placed and compacted from the depth of the sanitary sewer main to the top of the sanitary sewer riser pipe. Compacted Pipe Bedding Type 1 or 2 shall be required for all risers whether constructed in vertical wall or sloped wall trenches. Bedding material and construction practices shall be approved by the Construction Engineer prior to installation.
- SUPPORT OF RISERS.** Sanitary sewer riser pipe shall be supported during trench backfill. The riser pipe shall be held in a vertical position at all times until trench backfill and compaction has been completed. Contractor's methods for supporting and backfilling the riser pipe shall be approved by the Construction Engineer.
- PLUGGING.** The ends of the riser pipes and manhole stubs shall be plugged using an airtight solvent welded cap or plug. Cap or plug fittings shall be approved by the Construction Engineer prior to installation. Caps or plugs which do not provide an airtight seal will not be accepted.
- TOP OF THE RISER PIPE.** The top elevation of the sanitary sewer riser pipe shall be built per plan elevations, unless otherwise directed by the Construction Engineer. Where riser elevations are not shown on the plans, the top of the risers shall be set at an elevation four feet below the proposed ground surface. If ground water is encountered, the top of the riser pipe shall be set at an elevation two feet (min.) above the maximum water table elevation, regardless of the riser elevation shown on the plans.
- MARKING.** Locations of the ends of the sanitary sewer riser pipe shall be marked by fastening green colored plastic tape to the end of the riser. The tape shall be supported by a length of wood 2 x 4, extending from the top of the riser pipe to the proposed ground surface. The green tape shall be visible and extend one foot above the proposed ground surface. The green tape shall be 4 mil Polyethylene film with a minimum width of three inches, specifically manufactured for the purpose of identification of underground sewers.
- LOCATION MEASURES.** The project inspector shall record and document the location of all risers constructed as measured from the nearest manhole, indicating the direction from the manhole, the direction and distance from the main, riser size, and elevation of the top of the riser.
- RISER LOCATION.** The riser shall be located per plan if shown. If not shown on the plan, the riser shall be located at the center of the lot, within one foot of the property side of the easement for the lot being served. All riser locations shall be approved by the Construction Engineer prior to installation.
- PAYMENT.** "Sanitary sewer risers" shall be paid for at the contract unit price per each, which price shall be full compensation for all pipe, fittings, marking tape, length of wooden 2 x 4, reinforced concrete encasement, support during backfill, backfill, labor, site restoration, and any other items necessary to complete the work.
"Manhole stubs" shall be paid for at the contract unit price per each, which shall be full compensation for all labor, material, and incidentals necessary to complete the work, including all pipe, fittings, reinforced concrete encasement, and all other items as required and listed for "Sanitary Sewer Risers".

REVISED NOTE 4 - APRIL 98



TYPICAL PLAN VIEW

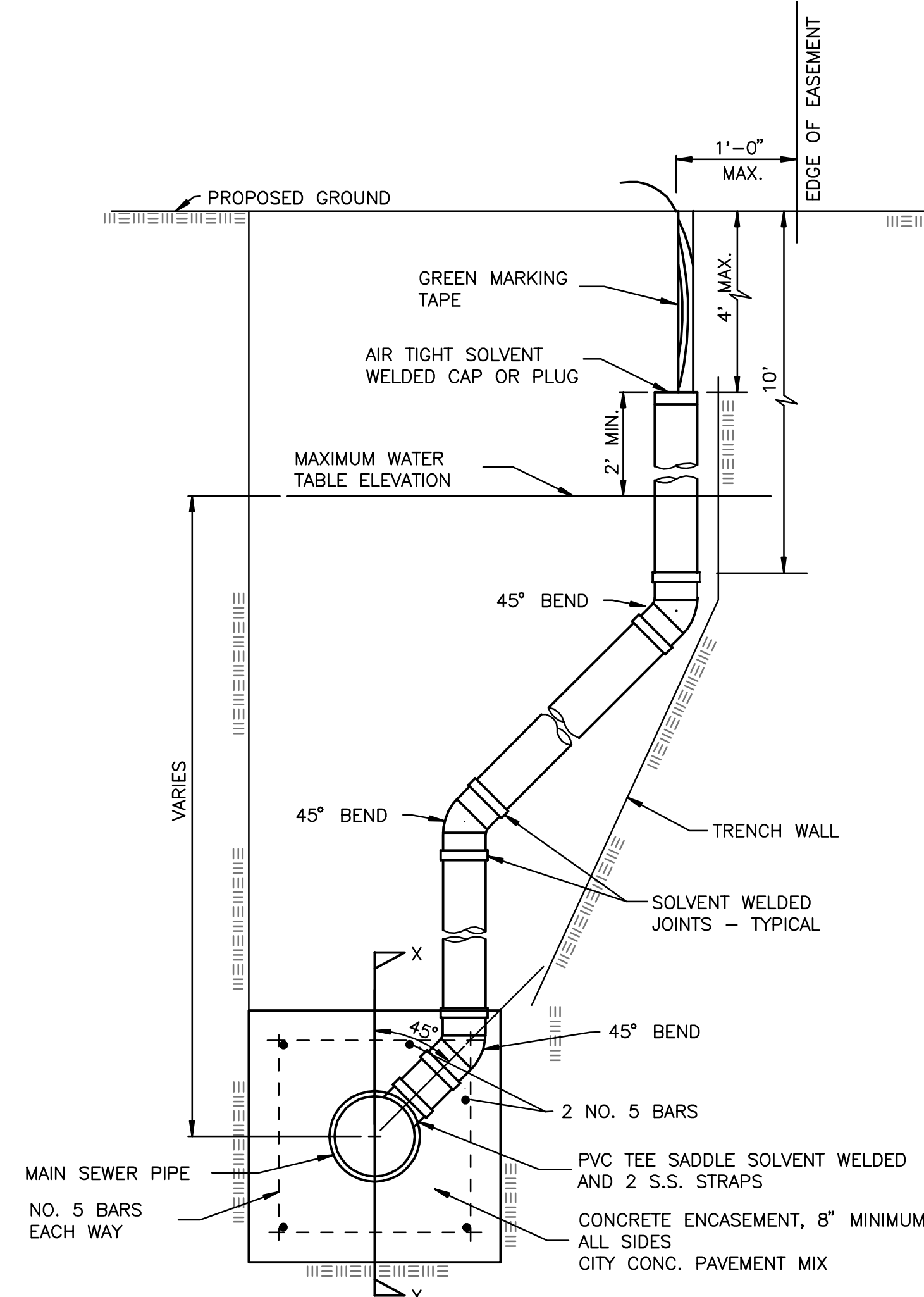


TYPICAL SECTION X-X

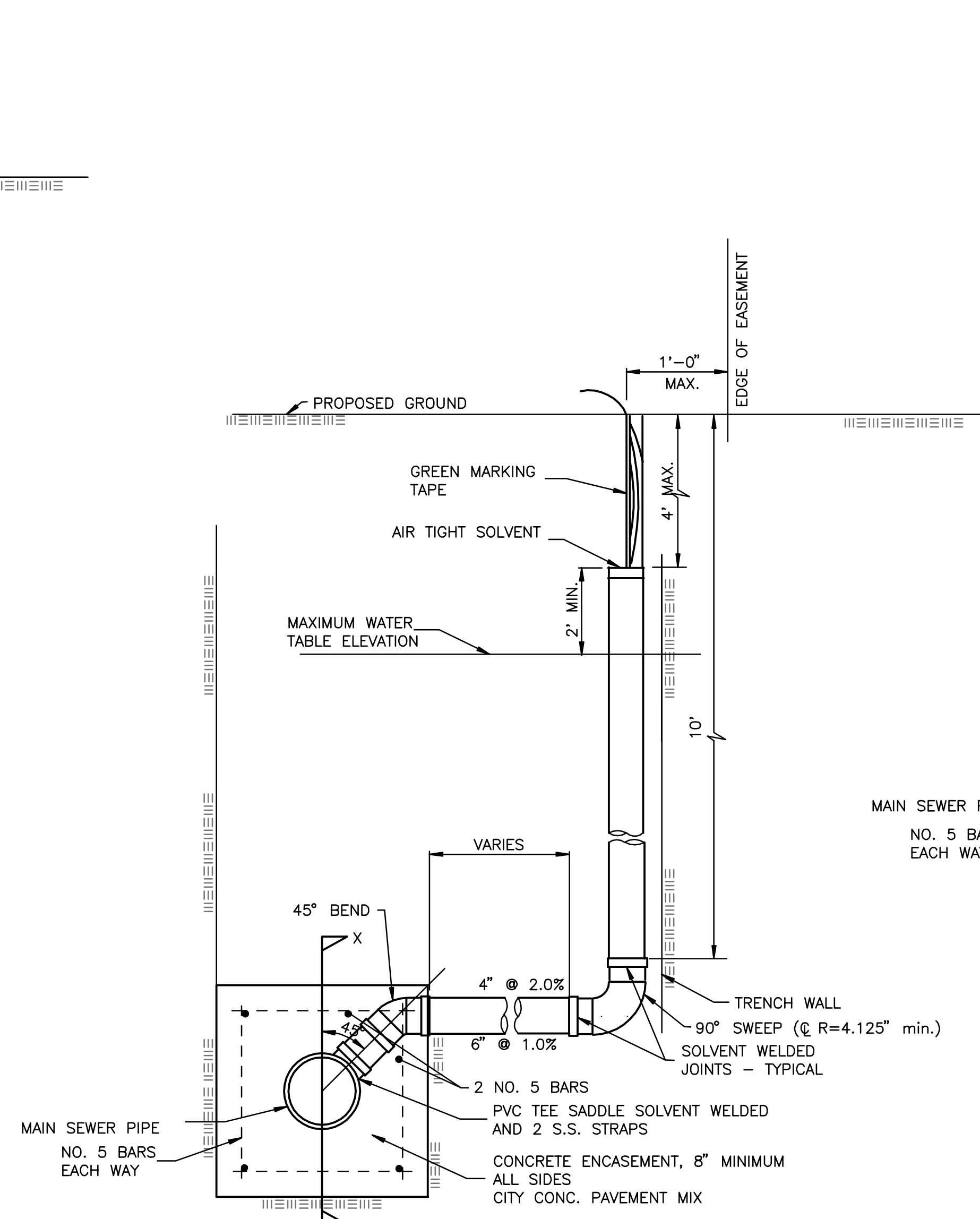
SEWER SERVICE TABLE										
NO.	SIZE	LOCATION				FOR INFORMATION ONLY		RECORD INFORMATION (TO BE COMPLETED BY PROJECT INSPECTOR)		NO.
		LOT NO.	BLOCK NO.	LINE NO.	STATION/DIRECTION	APPROXIMATE LENGTH 4" or 6" PIPE		DISTANCE FROM NEAREST MANHOLE		
1	8" x 4" Riser Pipe Assembly	1	1	1	0+10	13'	70'	UPSTREAM	DOWNSTREAM	1

NOTES:

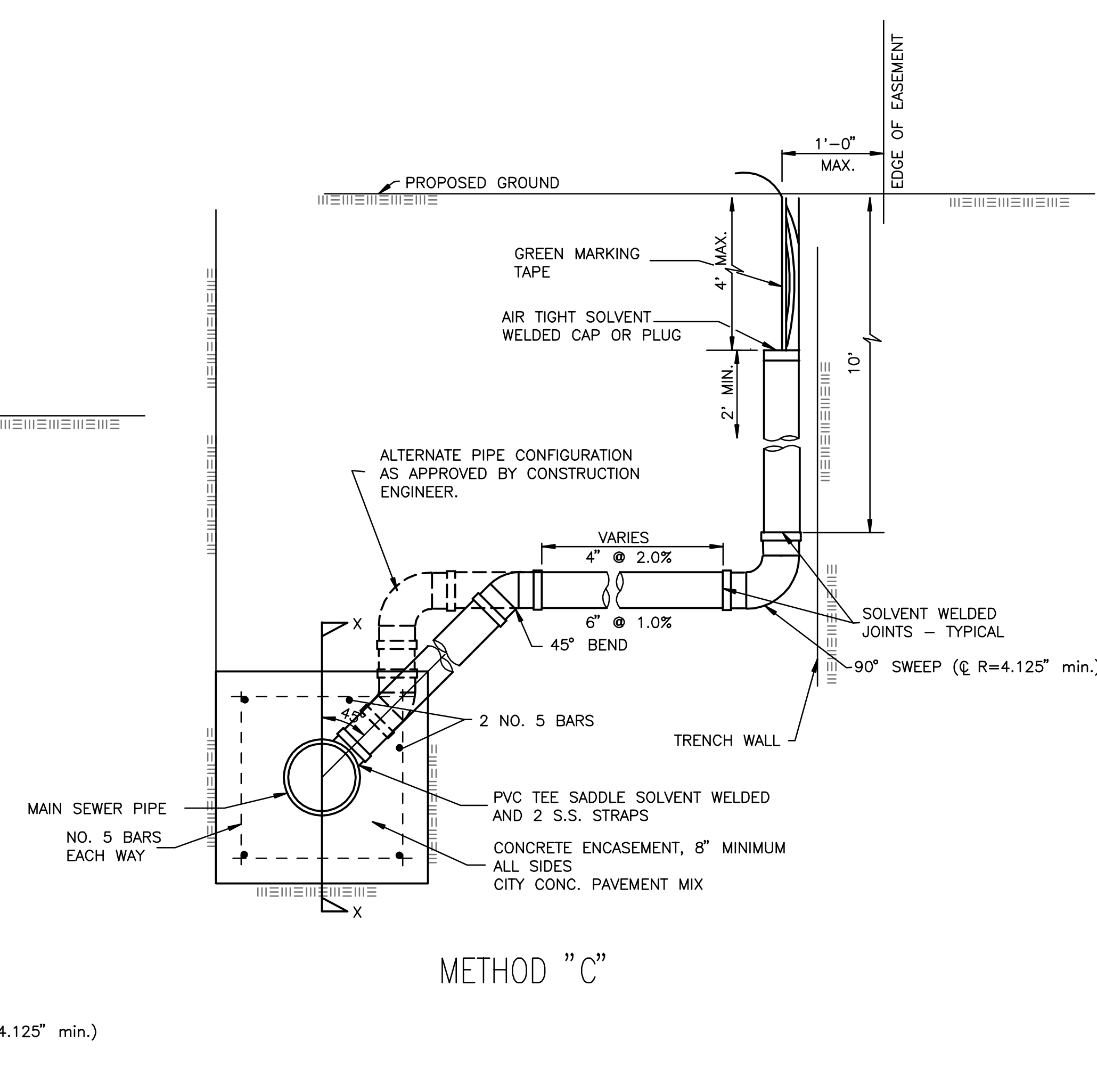
- Vertical Riser Pipe shall be extended to 2' minimum above ground water elevation and 4' maximum below proposed ground elevation.



METHOD "A"



METHOD "B"



METHOD "C"

NOTE: RISER PIPE REQUIREMENTS AT MANHOLE STUBS SHALL BE SIMILAR TO THOSE SHOWN ABOVE.

by A/E

Drawn 07-17-2009 2:32:48 PM by A/E
 Plot Scale 1:1 07-17-2009 3:01:54 PM
 G:\2009\08629\PPS\08629_C2.7_VERTICAL RISER

THE CITY OF WICHITA

CITY ENGINEER'S OFFICE
 CITY HALL - SEVENTH FLOOR
 455 NORTH MAIN STREET
 WICHITA, KANSAS 67202
 (316) 268-4500
 (316) 268-4114 FAX

VERTICAL RISER DETAIL

JAMES L. ARMOUR, P.E. - CITY ENGINEER

PROJECT NUMBER
1928 PPS (607861)

DATE
OCT. 2008

C2.7

S.W. COR. SE 1/4
SEC. 4, T27S, R2E
FOUND 1/2" REBAR
WITH MKEC CAP

N.W. COR. S.E. 1/4
SEC. 4, T27S, R2E

REGENCY LAKES COMMERCIAL 2ND ADDITION

AN ADDITION TO WICHITA,
SEDGWICK COUNTY, KANSAS



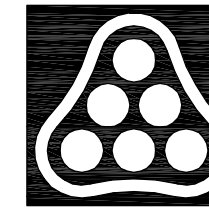
SCALE: 1"=100'

- = FOUND #5 BAR W/MKEC CAP (UNLESS OTHERWISE NOTED)
- = SET 1/2" REBAR W/ PEC CAP (UNLESS OTHERWISE NOTED)

BENCHMARKS:

- C.O.W. Disc in Conc. Base R.R. Signal W. Side Greenwich
± 1/2 Mile S. of 21st St. N. City Datum: 183.19
N.G.V.D.: 1370.59
- BM 1: Chiseled "d" Conc. base Traffic Signal at S.W.
Corner 21st. N. and Greenwich
City Datum: 176.16
N.G.V.D.: 1363.56
- BM 2: Chiseled "d" on headwall N.E. Corner RCBC
under 21st. N. 750± W. of Greenwich
City Datum: 175.05
N.G.V.D.: 1362.45
- BM 3: R.R. Spike in 18" Locust tree, E. end
row on N. Side 21st N. 1350± W. of
Greenwich
City Datum: 180.14
N.G.V.D.: 1367.54
- BM 4: W. end Bolt in Power Pole 1± above
ground at Private Dr. 2400 N. Greenwich
on E. side of Rd.
City Datum: 183.80
N.G.V.D.: 1371.20
- BM 5: Chiseled "d" on W. wing wall at W. end of
S. headwall RCBC under Bike Path just S.
of K-96 E.B. Ramp to Greenwich 400± from
Greenwich.
City Datum: 179.87
N.G.V.D.: 1367.27
- BM 6: Chiseled "d" on S.E. Cor. RCBC under Bike
Path just S. of K-96, near N.W. Cor. Property
City Datum: 182.975
N.G.V.D.: 1370.375

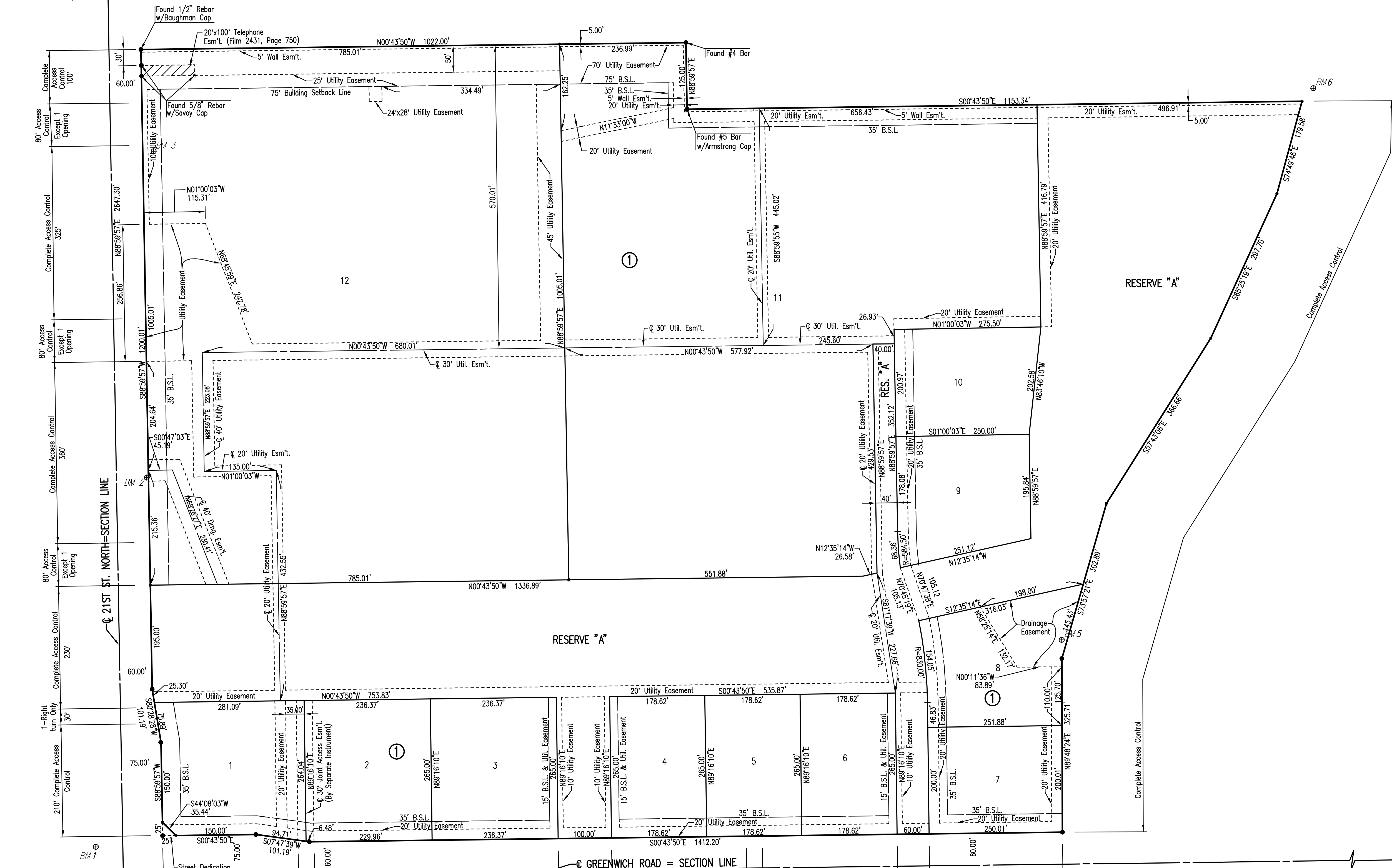
NE COR., S.E. 1/4
SEC. 4, T27S, R2E
FOUND 3/4" IRON PIPE
IN THIMBLE



No.	Revision	By	Date
LOT 1, BLK. 1, REGENCY LAKES COMMERCIAL 2ND ADDITION PRIVATE STORM WATER SEWER AND SANITARY SEWER EXTENSIONS			
PLAT			
JAMES L. ARMOUR, P.E. - CITY ENGINEER CITY OF WICHITA PRIVATE PROJECT NO. 1928 PPS (607861)			
Professional Engineering Consultants, P.A. 303 S. TOPKA • WICHITA, KANSAS 67202 316-262-2691 • FAX 316-262-3003			
Designed by	RMH	Job No.	08629
Drawn by	AEE	Date	OCTOBER 2008
			Sht. C2.8

Saved: 07-17-2009 2:33:36 PM by AEE
 Plot Scale: 1:100 07-17-2009 3:03:17 PM by AEE
 Q:\2009\08629\PPS\08629_C2.8.PLT

S.E. COR. S.E. 1/4
SEC. 4, T27S, R2E
FOUND CHISELED "d"



K-96 HIGHWAY