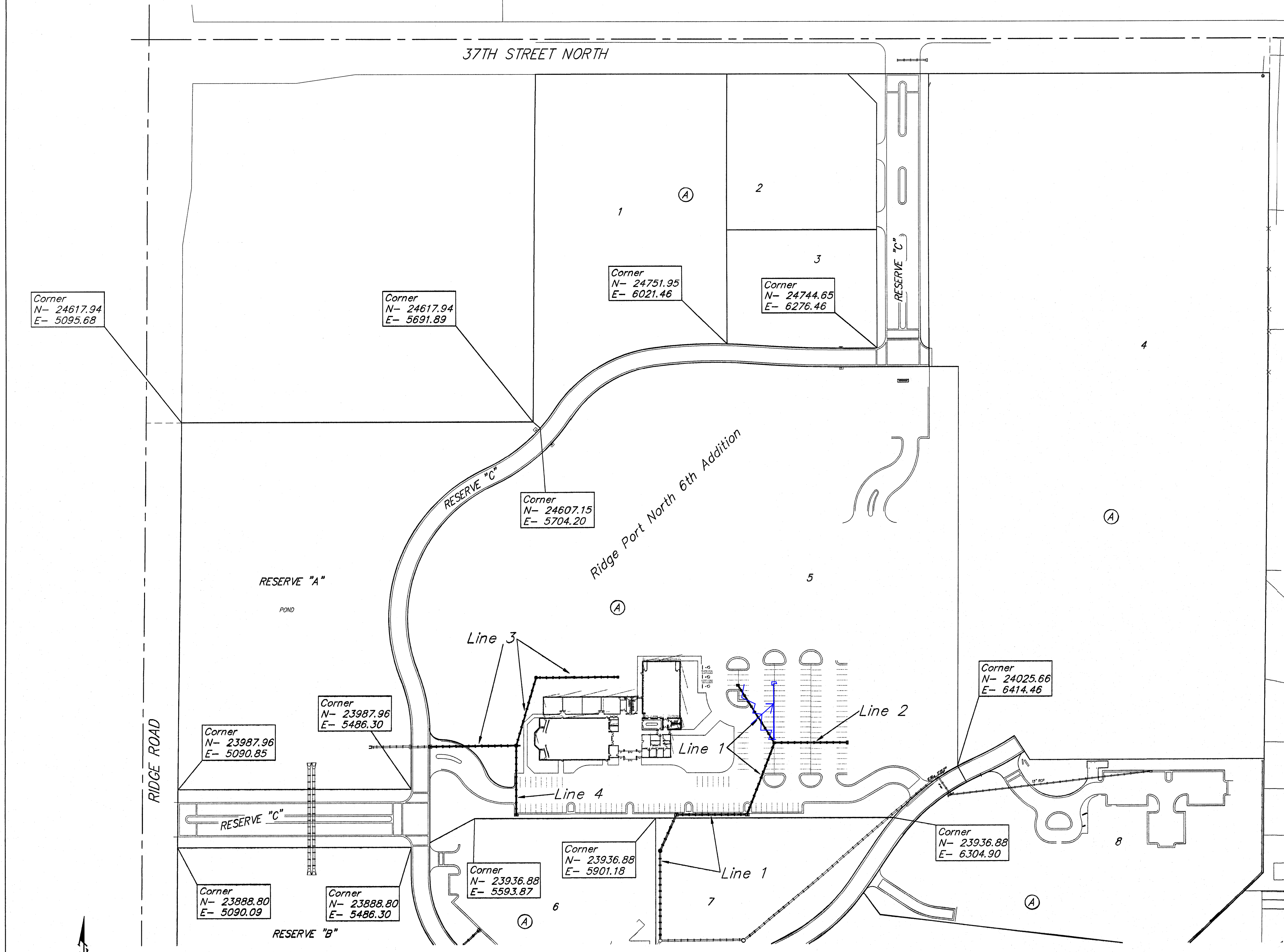


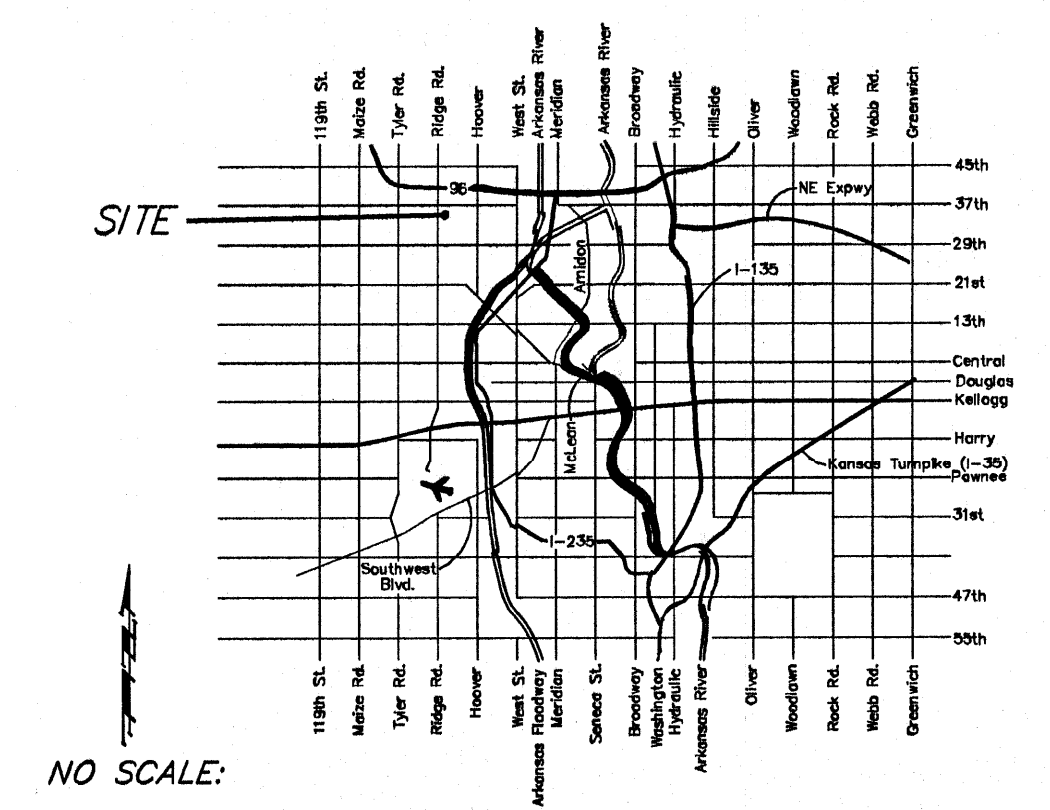
STORM WATER SEWER TO SERVE  
**Ridge Port North  
 6th Addition**

LOT 5, BLOCK A  
**Private Project: 2029 PPW (607853)**  
 CITY OF WICHITA, KANSAS  
 James Armour, P.E. City Engineer  
 February 2010

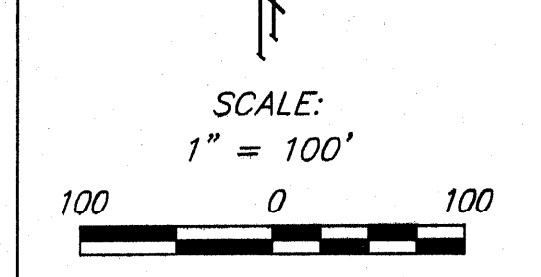
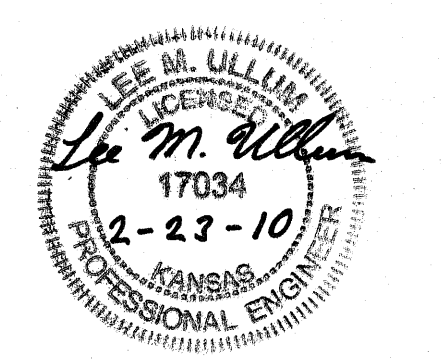


**Bench Marks:**

- BENCHMARK-1:**  
 "□" TOP OF INLET SE OF SE COR.  
 LOT 2 RIDGE PORT NORTH  
 ELEV.=1330.89 (NAVD88)
- BENCHMARK-2:**  
 "□" TOP OF CURB SOUTH END OF  
 SOUTH MEDIAN AT ENTRANCE ON  
 37TH STREET NORTH  
 ELEV.=1333.39 (NAVD88)
- BENCHMARK-3:**  
 "□" TOP OF CURB WEST END OF  
 ENTRANCE TO RETIREMENT COMPLEX  
 ELEV.=1331.62 (NAVD88)



VICINITY MAP



Coordinate Sheet