

BENCHMARK-1:
 "□" TOP OF INLET SE OF SE COR.
 LOT 2 RIDGE PORT NORTH
 ELEV.=1330.89 (NAVD88)

BENCHMARK-2:
 "□" TOP OF CURB SOUTH END OF
 SOUTH MEDIAN AT ENTRANCE ON
 37TH STREET NORTH
 ELEV.=1333.39 (NAVD88)

BENCHMARK-3:
 "□" TOP OF CURB WEST END OF
 ENTRANCE TO RETIREMENT COMPLEX
 ELEV.=1331.62 (NAVD88)

Sta. 0+00, Begin Line 1.
 Remove 30" Stub.
 Install 24" RCP North.
 Grout & Seal Water Tight.
 Extend 24" RCP North.
 N= 23725.70, E= 5908.74

Sta. 1+56.0, Line 1.
 Construct 5' Dia. Type "P" Manhole.
 Top = 1331.60
 N= 23881.65, E= 5908.74

Sta. 2+23.2, Line 1.
 Construct Type "1" Curb
 Inlet. (4'x5')
 Top = 1332.40
 Install Sediment Barrier.
 N= 23942.88, E= 5936.52

Contractor To Adjust Top
 Of Sanitary Sewer Manhole
 Down 0.25' From 1332.78
 To 1332.53.

CAUTION!
 2-Proposed 3" Sch. 40 PVC
 Crossings. Proposed Depths
 Per Plan.

CAUTION!
 Westar Line Crossing. Depth Unknown.
 Contractor To Hand Dig With Extreme
 Caution To Expose Line Prior To Any
 Construction. Report Conflict To Engineer.

CAUTION!
 AT&T Line Crossing. Depth Unknown.
 Contractor To Hand Dig With Extreme
 Caution To Expose Line Prior To Any
 Construction. Report Conflict To Engineer.

CAUTION!
 AT&T & Westar Line Crossings. Depths
 Unknown. Contractor To Hand Dig With
 Extreme Caution To Expose Line Prior To
 Any Construction. Report Conflict To Engineer.

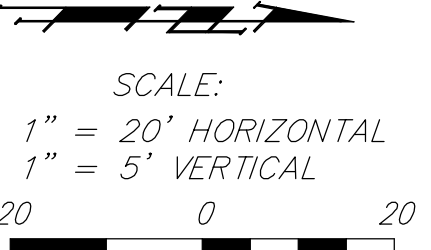
Sta. 3+43.9, Line 1.
 Construct Type "1" Curb
 Inlet. (4'x5')
 Top = 1331.75
 Install Sediment Barrier.
 N= 23942.88, E= 6057.25

CAUTION!
 Proposed 8" Water Line
 Crossing. Depth Per Plan.

CAUTION!
 10" Sanitary Sewer Crossing.
 Depth By Interpolation
 Between Manholes.

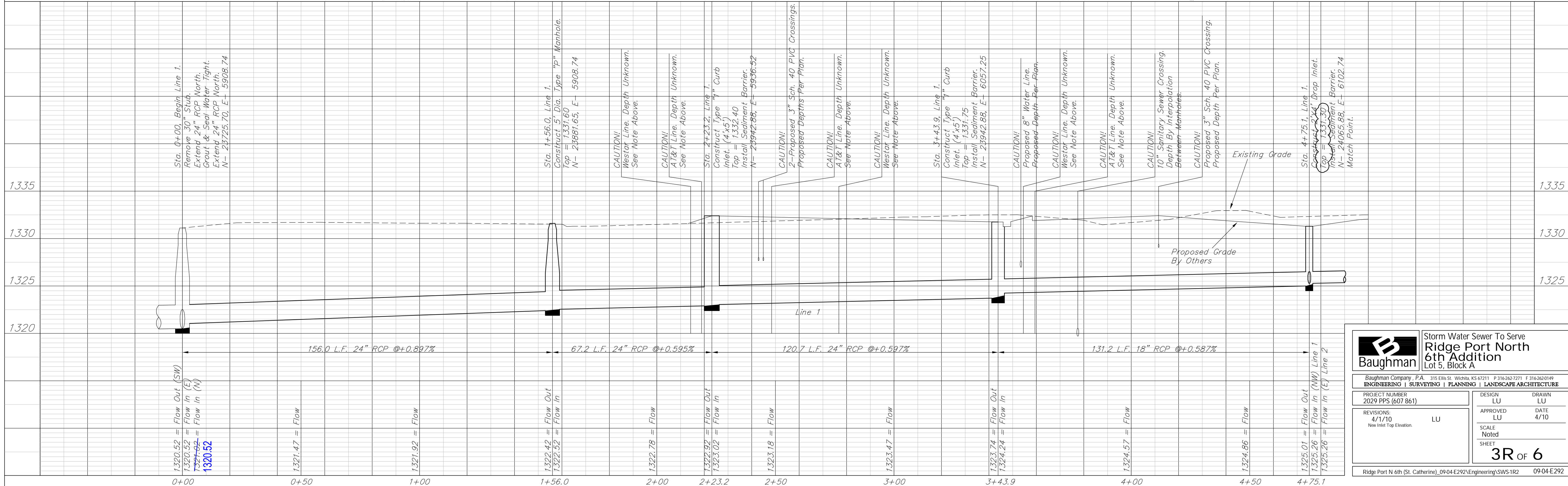
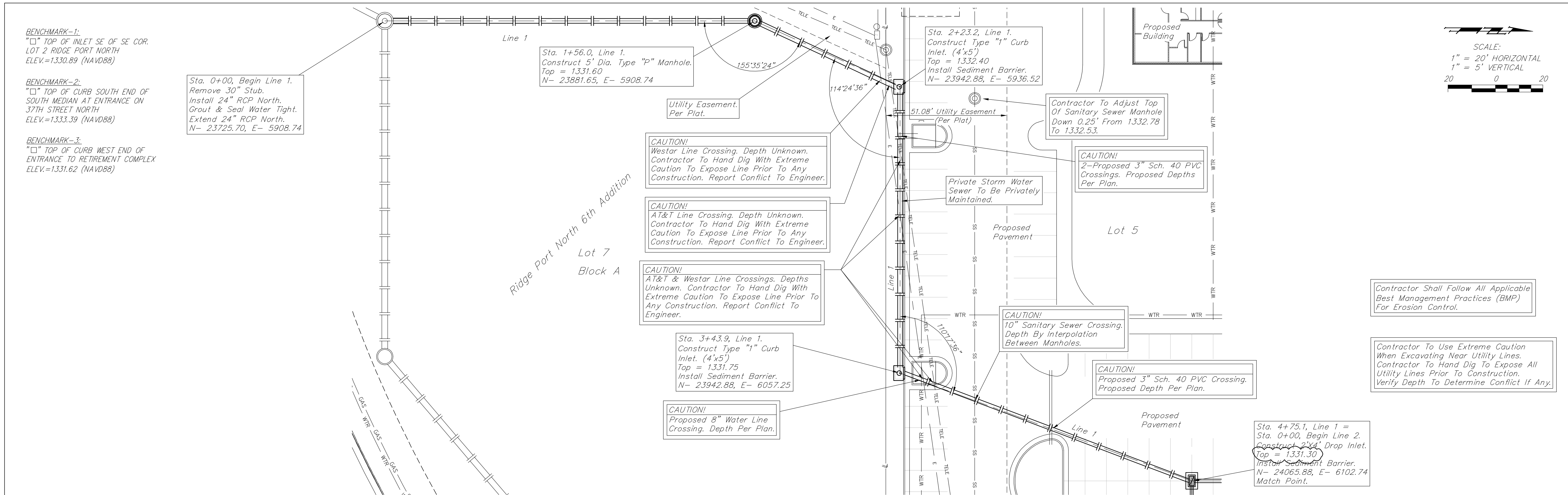
CAUTION!
 Proposed 3" Sch. 40 PVC Crossing.
 Proposed Depth Per Plan.

Sta. 4+75.1, Line 1 =
 Sta. 0+00, Begin Line 2.
 Construct 2'x4' Drop Inlet.
 Top = 1331.30
 Install Sediment Barrier.
 N= 24065.88, E= 6102.74
 Match Point.



Contractor Shall Follow All Applicable
 Best Management Practices (BMP)
 For Erosion Control.

Contractor To Use Extreme Caution
 When Excavating Near Utility Lines.
 Contractor To Hand Dig To Expose All
 Utility Lines Prior To Construction.
 Verify Depth To Determine Conflict If Any.



Baughman Storm Water Sewer To Serve
 Ridge Port North
 6th Addition
 Lot 5, Block A

Baughman Company, P.A. 315 Ellis St. Wichita, KS 67211 P 316-262-7271 F 316-262-0149
 ENGINEERING | SURVEYING | PLANNING | LANDSCAPE ARCHITECTURE

PROJECT NUMBER
 2029 PPS (607 861)

DESIGN LU DRAWN LU
 APPROVED LU DATE 4/10
 SCALE Noted
 SHEET 3R OF 6

REVISIONS
 4/1/10 LU
 New Inlet Top Elevation.

Ridge Port N 6th (St. Catherine)_0904E292\Engineering\SWS-1R2 09-04-E292