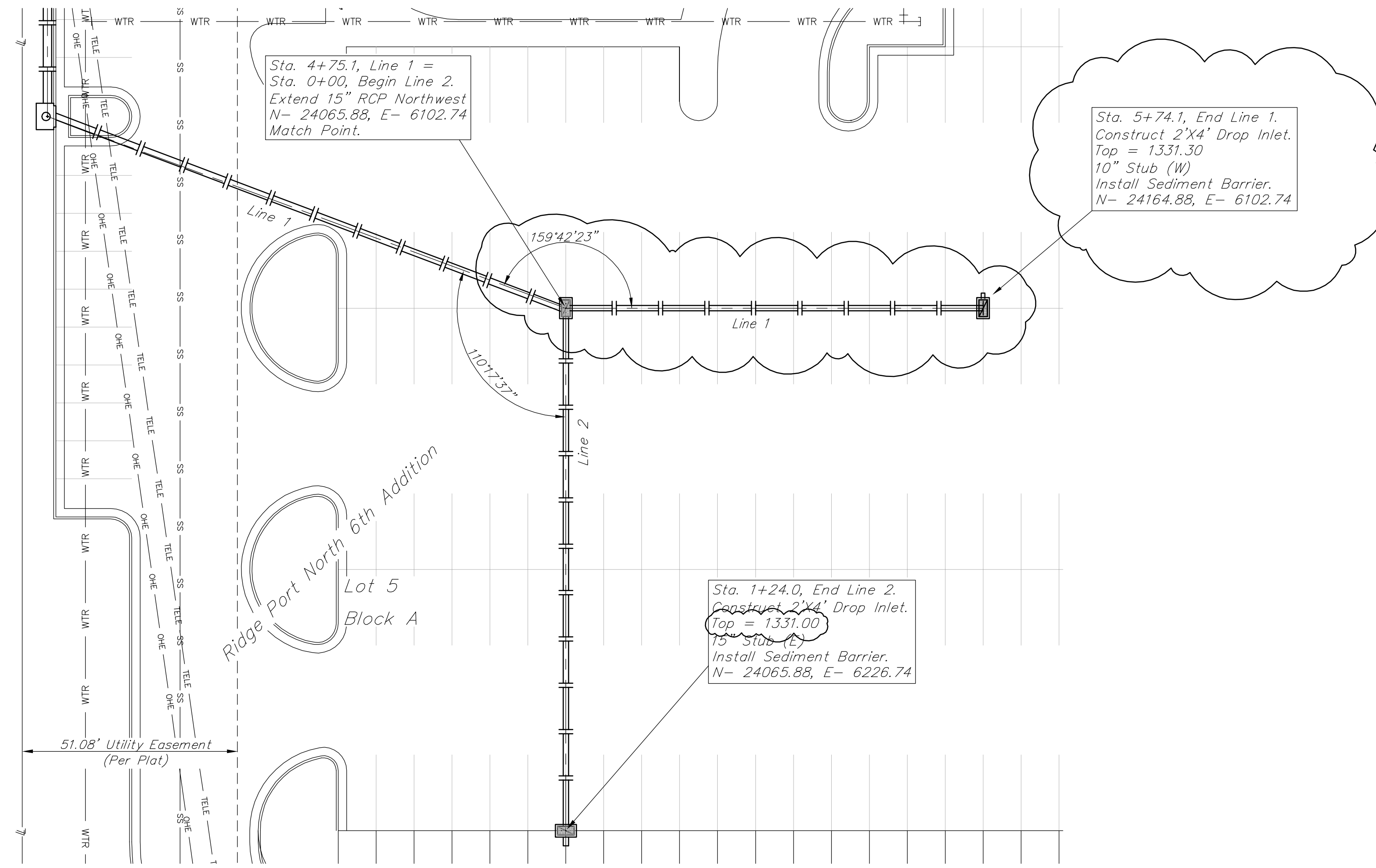


BENCHMARK-1:
 "□" TOP OF INLET SE OF SE COR.
 LOT 2 RIDGE PORT NORTH
 ELEV.=1330.89 (NAVD88)

BENCHMARK-2:
 "□" TOP OF CURB SOUTH END OF
 SOUTH MEDIAN AT ENTRANCE ON
 37TH STREET NORTH
 ELEV.=1333.39 (NAVD88)

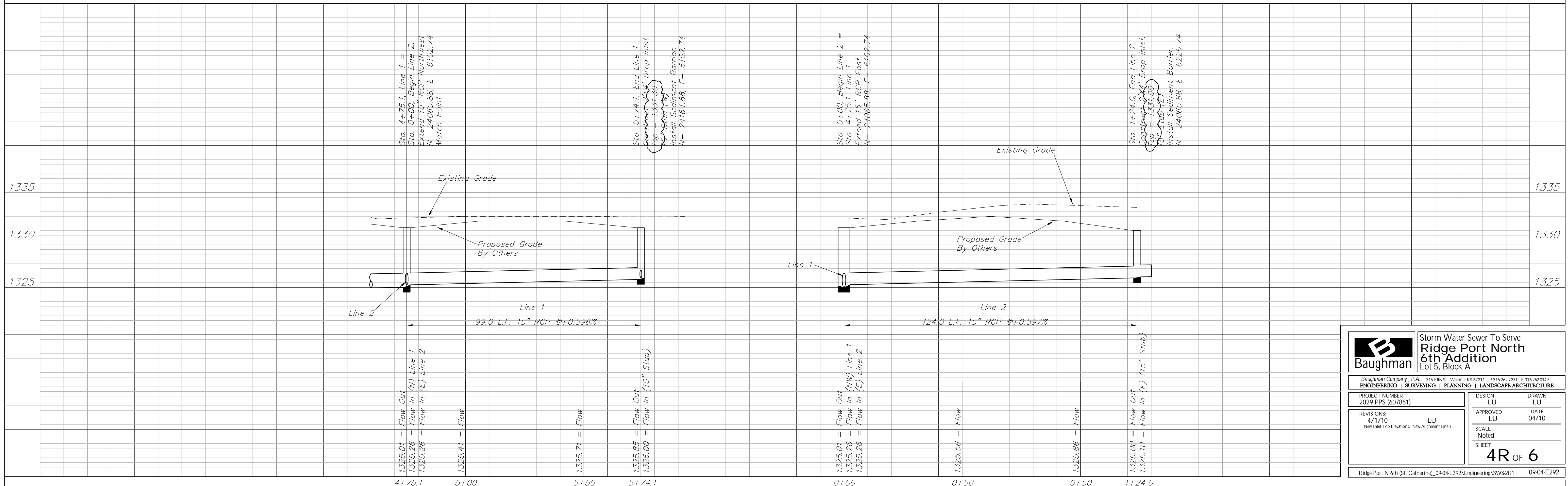
BENCHMARK-3:
 "□" TOP OF CURB WEST END OF
 ENTRANCE TO RETIREMENT COMPLEX
 ELEV.=1331.62 (NAVD88)



SCALE:
 1" = 20' HORIZONTAL
 1" = 5' VERTICAL

Contractor Shall Follow All Applicable
 Best Management Practices (BMP)
 For Erosion Control.

Contractor To Use Extreme Caution
 When Excavating Near Utility Lines.
 Contractor To Hand Dig To Expose All
 Utility Lines Prior To Construction.
 Verify Depth To Determine Conflict If Any.



Baughman Storm Water Sewer To Serve
 Ridge Port North
 6th Addition
 Lot 5, Block A

Baughman Company, P.A. 315 Ellis St. Wichita, KS 67211 P 316-263-7271 F 316-263-0149
 ENGINEERING | SURVEYING | PLANNING | LANDSCAPE ARCHITECTURE

PROJECT NUMBER
 2029 PPS (607861)

DESIGN LU DRAWN LU
 APPROVED LU DATE 04/10
 SCALE Noted
 SHEET

REVISIONS:
 4/1/10 LU
 New Inlet Top Elevations, New Alignment Line 1.

Ridge Port N 6th (St. Catherine)_0904E292\Engineering\SWS2R1 09-04-E292