

# AS BUILT PLANS

Contractor: Mies  
 Inspector: Don Eddingfield, Baughman Co.  
 pdf's by KEK < 7/12/10

## STORM WATER SEWER TO SERVE

# Ridge Port North 6th Addition

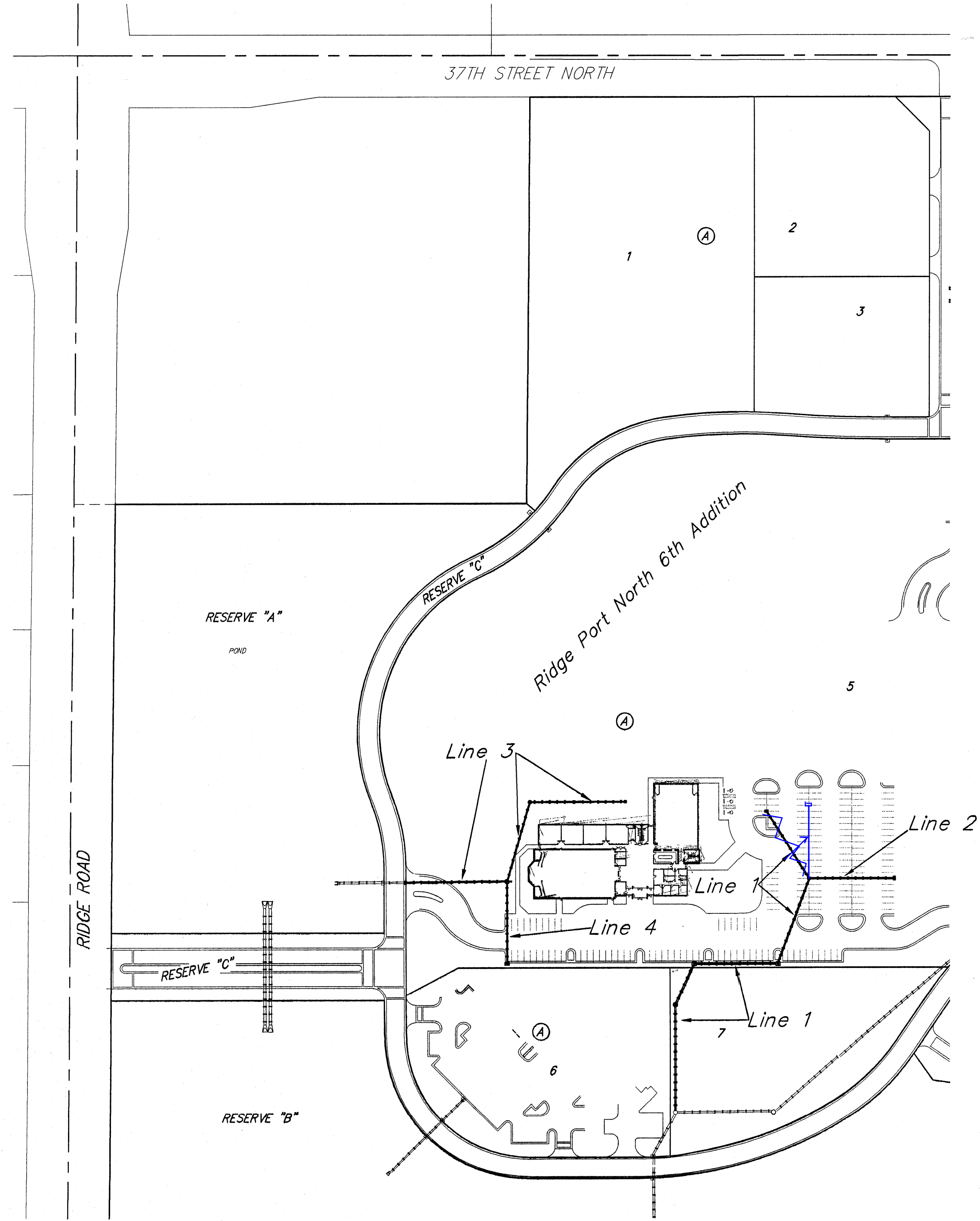
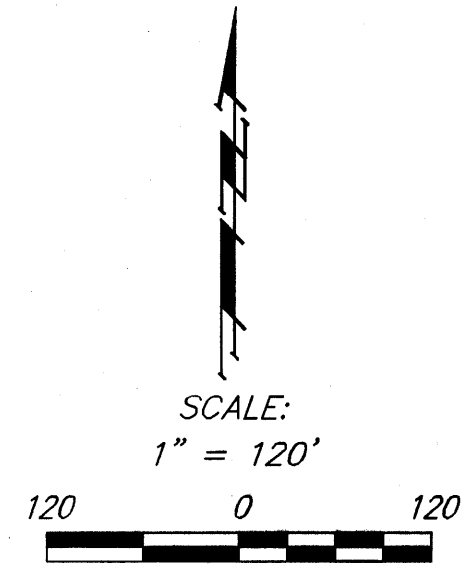
LOT 5, BLOCK A

Private Project: 2029 PPS (607861)

CITY OF WICHITA, KANSAS

James Armour, P.E. City Engineer

February 2010



### Bench Marks:

- BENCHMARK-1:**  
 "□" TOP OF INLET SE OF SE COR.  
 LOT 2 RIDGE PORT NORTH  
 ELEV.=1330.89 (NAVD88)
- BENCHMARK-2:**  
 "□" TOP OF CURB SOUTH END OF  
 SOUTH MEDIAN AT ENTRANCE ON  
 37TH STREET NORTH  
 ELEV.=1333.39 (NAVD88)
- BENCHMARK-3:**  
 "□" TOP OF CURB WEST END OF  
 ENTRANCE TO RETIREMENT COMPLEX  
 ELEV.=1331.62 (NAVD88)

### Index

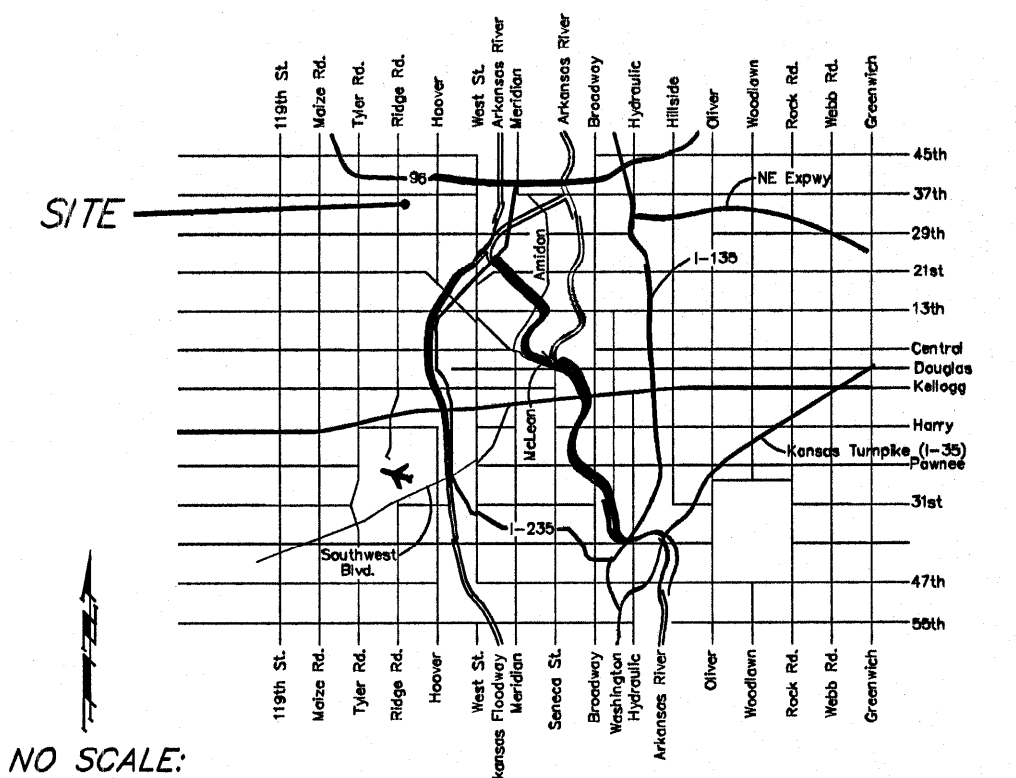
Title Sheet	1
Coordinate Sheet	2
Plan/Profile Sheets	3-5
Copy Of Plat	6
Manhole Detail	Available On Request
Ring & Cover Details	Available On Request
Inlet Detail	Available On Request
BMP Erosion Details	Available On Request

### Legal Description

Lot 5, Block A, Ridge Port North 6th Addition,  
 Wichita, Sedgwick County, Kansas.

### General Notes

- Contractor will be required to provide notice to utility companies a minimum of forty-eight (48) hours prior to any excavation, as follows:  
 Kansas One-Call 687-2470  
 The Contractor must notify the following in case of an emergency:  
 Cox Communications 262-4270  
 Kansas Gas Service Company 1-888-482-4950  
 Westar Energy (Electric) 383-8650  
 Black Hills Energy (Gas) 1-800-303-0357  
 Southwestern Bell Telephone Co. 1-800-286-8313  
 City of Wichita Water Dept. (Water) 262-6000  
 City of Wichita Sewer Maint. (SS) 262-6000  
 City of Wichita Storm Sewer Maint. 268-4090  
 City of Wichita Traffic Maint. 268-4034
- All disturbed R/W areas not intended for pavement or sidewalk construction shall be seeded with Kansas Premium Fescue Blend at a rate of 8 lb./1000 Sq. Ft., fertilized with a 16-20-6 ratio at a rate of 4 lb./1000 Sq. Ft., and mulched with Prairie Hay at a rate of 92 lb./1000 Sq. Ft. Mulch shall be "patted" with forks or punched into soil to reduce loss due to wind.
- Utility service lines, poles, valve boxes, meters, et cetera are to be adjusted as necessary by others prior to construction unless the plans specifically call for their adjustment by the Contractor or unless the plans specifically identify a utility to be adjusted by its owner during construction. Existing utilities and their location, as shown on the plans represent the best information obtainable for design and shall be field verified. The contractor will be required to work around existing utilities within the right-of-way which do not conflict with proposed construction.
- All storm sewers and appurtenances shall be installed in accordance with the most recent edition of City of Wichita, Kansas Standard Specifications for the Construction of City Projects.
- Contractor shall furnish the inspector with a copy of the manufacturer's certification for any pipe used on this project after completion of pipe installation. The engineer will not certify the project to the city until pipe certification has been received.
- Contractor shall not start work on the project until the project inspector is assigned to the project and is present on the site. Contractor shall not start on the project until all necessary bonds and permits have been obtained. Bonds may include but are not limited to Statutory, Performance & Maintenance Any work done without inspection will be required to be uncovered for inspection.
- Rubble from the removal of miscellaneous structures and excess excavation which is to be wasted shall be disposed of on sites to be provided by the Contractor. These sites shall be approved by the Engineer as to suitability, appearance and site location. Locations that, in the opinion of the Engineer, will leave an unsightly appearance will not be approved. All disposal sites must be approved by the Kansas Department of Health and Environment. Material either stockpiled or disposed of in a flood plain would require a Kansas State Board of Agriculture permit. Any material dumped in waters of the United States or wetlands is subject to U.S. Corps. of Engineers permitting regulations. Any material buried or stockpiled beyond approved construction limits would require additional archaeological investigations unless buried in a previously approved borrow location.



### VICINITY MAP

APPROVED AS NOTED  
 BY CITY ENGINEER OF WICHITA

Storm Sewers *Julianne Kellman* 2-23-10

NOTE TO CONTRACTORS

Installation, inspection and testing for this project is to be provided by a Licensed Consulting Engineering Firm under contract with the Owner/Developer. Said inspection to be in accordance with the City of Wichita standard construction engineering practices and certified by a Licensed Professional Engineer. No work shall be performed in dedicated easements or public right-of-way by the Contractor without such inspection nor shall any work be commenced without written authorization by the City Engineer. All Construction and Materials shall comply with the City of Wichita Specifications and Standards (on file and available in the City Engineer's Office).

