

WATER LINE W/FIRE HYDRANT TO SERVE

Ridge Port North 6th Addition

LOT 5, BLOCK A

Private Project: 1521 PPW (607853)

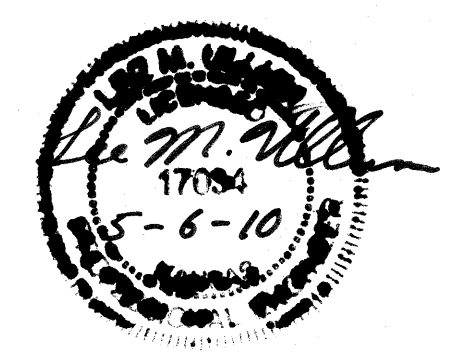
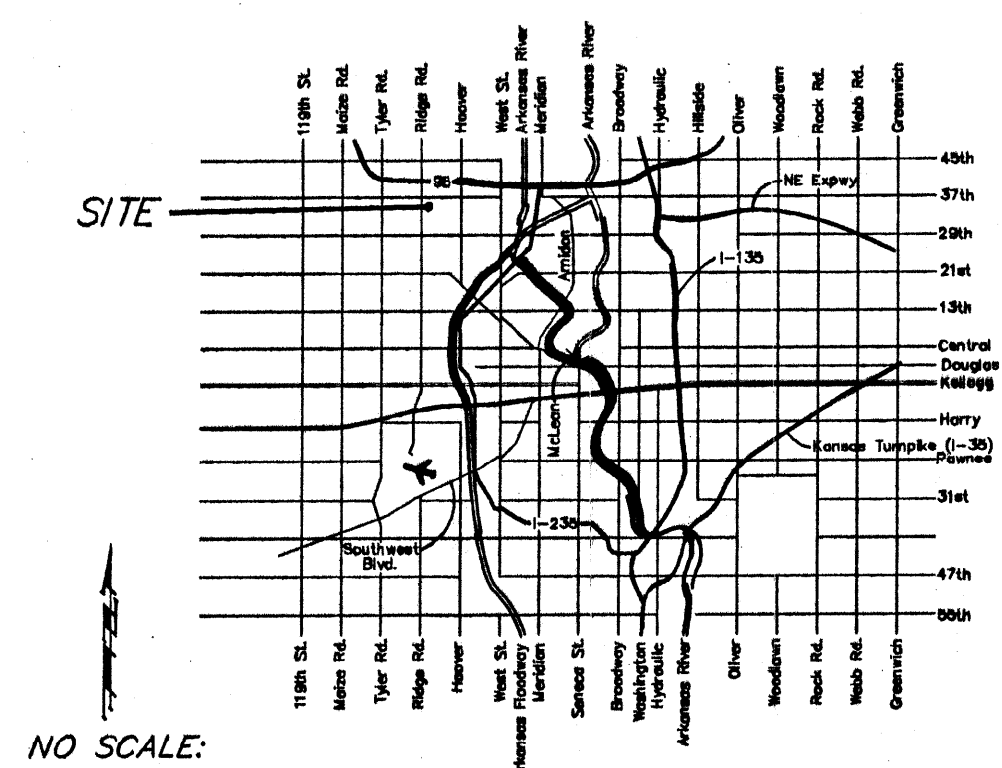
CITY OF WICHITA, KANSAS

James Armour, P.E. City Engineer

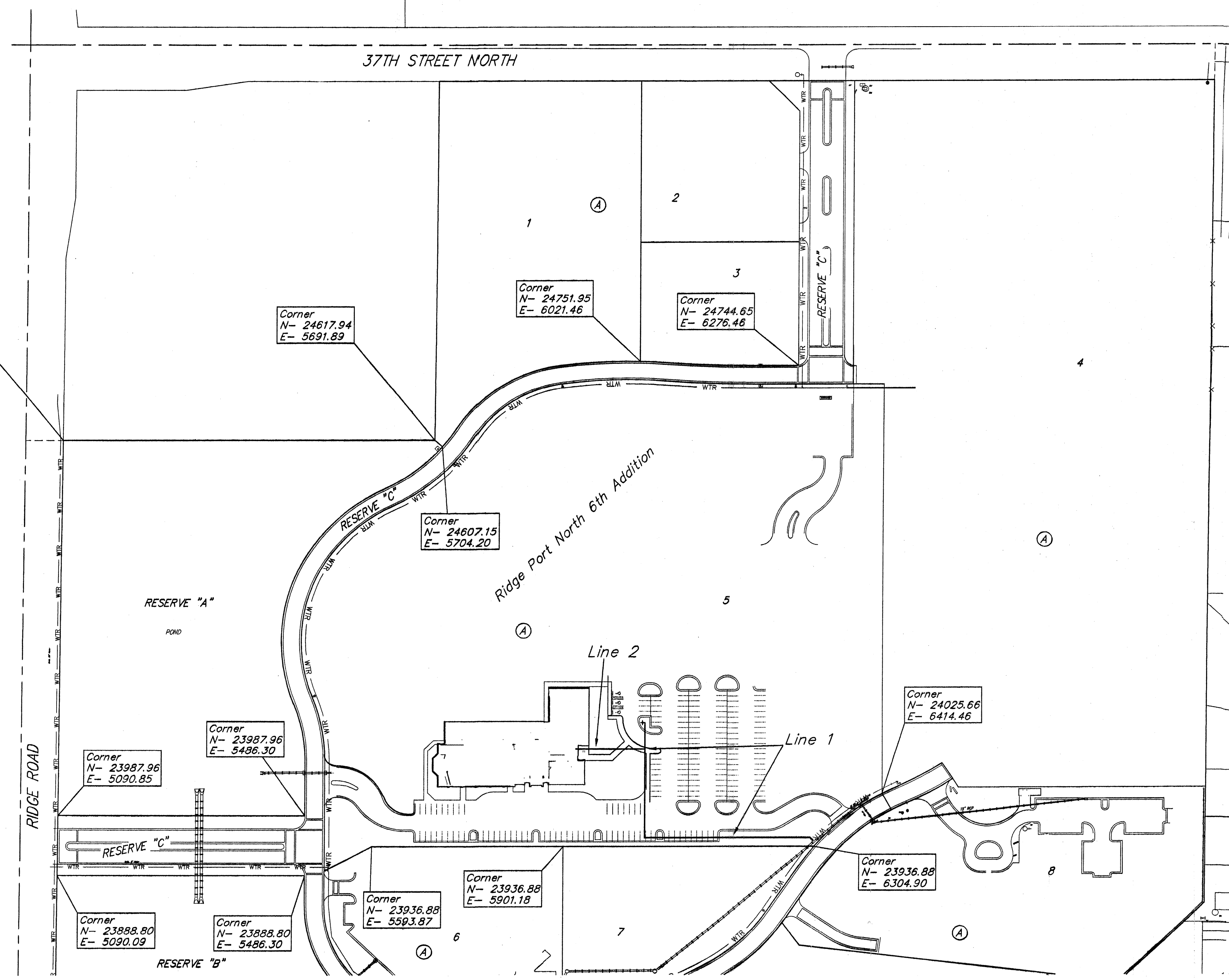
May 2010

Bench Marks:

- BENCHMARK-1:**
"□" TOP OF INLET SE OF SE COR.
LOT 2 RIDGE PORT NORTH
ELEV.=1330.89 (NAVD88)
- BENCHMARK-2:**
"□" TOP OF CURB SOUTH END OF
SOUTH MEDIAN AT ENTRANCE ON
37TH STREET NORTH
ELEV.=1333.39 (NAVD88)
- BENCHMARK-3:**
"□" TOP OF CURB WEST END OF
ENTRANCE TO RETIREMENT COMPLEX
ELEV.=1331.62 (NAVD88)



VICINITY MAP



Corner
N- 24617.94
E- 5095.68

Corner
N- 24617.94
E- 5691.89

Corner
N- 24751.95
E- 6021.46

Corner
N- 24744.65
E- 6276.46

Corner
N- 24607.15
E- 5704.20

Corner
N- 24025.66
E- 6414.46

Corner
N- 23987.96
E- 5090.85

Corner
N- 23987.96
E- 5486.30

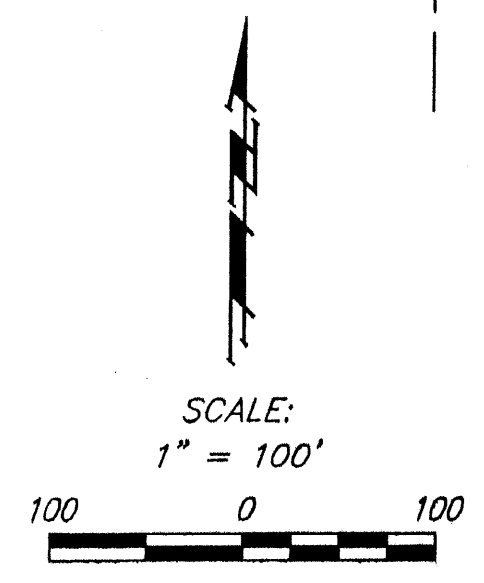
Corner
N- 23936.88
E- 6304.90

Corner
N- 23888.80
E- 5090.09

Corner
N- 23888.80
E- 5486.30

Corner
N- 23936.88
E- 5593.87

Corner
N- 23936.88
E- 5901.18



Coordinate Sheet