

STATE	PROJECT NO.	YEAR	SHEET NO.	TOTAL SHEETS
KANSAS	87 N-0235-01	2006	1	120

INDEX OF SHEETS

SHEET NO	DESCRIPTION
1	TITLE SHEET
2	GENERAL NOTES
3-4	TYPICAL SECTIONS
5-20	PLAN & PROFILE SHEETS
21-28	PAVING DETAILS
29-39	DRAINAGE DETAILS
40	MISCELLANEOUS DETAILS
41-51	WATER PLAN & PROFILE
52-54	WATER DETAILS
55	SUMMARY OF QUANTITIES
56-64	BMP PLAN AND DETAILS
65-70	ROADSIDE IMPROVEMENT PLANS
71	ROADSIDE IMPROVEMENT DETAILS
72-77	SIGNALIZATION PLANS & DETAILS
78-83	PAVEMENT MARKING & SIGNING
84	CONSTRUCTION SEQUENCE
85-95	TRAFFIC CONTROL
96-97	DRAINAGE MAP & SUMMARY
98-120	CROSS SECTIONS

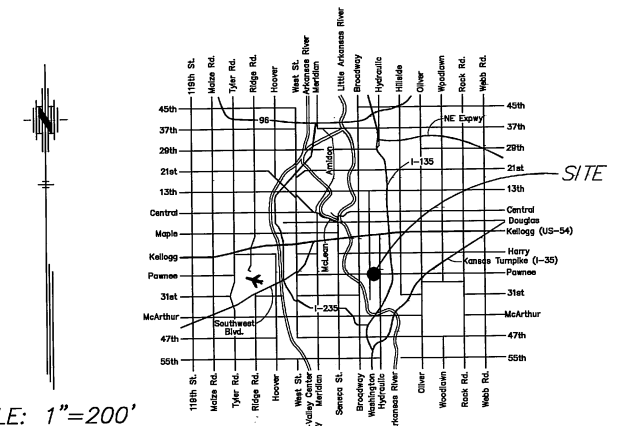
STATE OF KANSAS
DEPARTMENT OF TRANSPORTATION



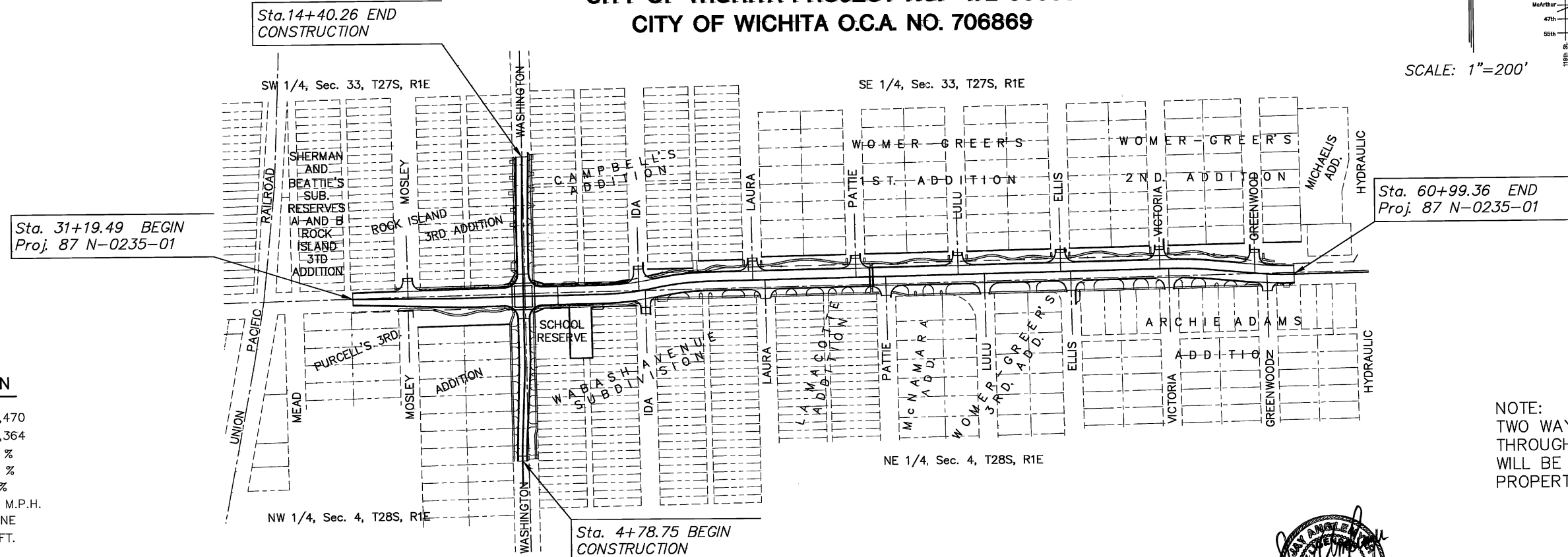
PLAN AND PROFILE OF PROPOSED
PAWNEE AVENUE FROM
WASHINGTON TO HYDRAULIC
FEDERAL AID PROJECT

WICHITA, SEDGWICK COUNTY, KANSAS
POPULATION = 335,562
CITY OF WICHITA PROJECT NO. 472-83858
CITY OF WICHITA O.C.A. NO. 706869

KDOT PROJ. NO. 87 N-0235-01
F.A. NO. CMQ N023 (501)
GRADING
SURFACING
STORM SEWER
SIGNALIZATION
PAVEMENT MARKING
SEEDING



LOCATION MAP



DESIGN DESIGNATION

AADT (2002)	=	24,470
AADT (2030)	=	29,364
DHV	=	10 %
D	=	60 %
T	=	3 %
V	=	35 M.P.H.
Control of Access	=	NONE
Clear Zone	=	6 FT.

CONVENTIONAL SIGNS

COUNTY LINE	-----	CENTER LINE OF PROJECT	50 1+00
CITY LIMITS	=====	TERRACE	-----
STATE OR NATIONAL LINE	-----	CULVERTS	-----
TOWNSHIP, SECTION or GRANT LINE	-----	DROP INLET & STORM SEWER	-----
PROPERTY LINE	-----	ACCESS CONTROL	-----
HIGHWAY FENCE	-----	POWER POLE	-----
EXISTING FENCE	-----	TELEPHONE POLE	-----
GUARD FENCE	-----	MARSH	-----
CONSTRUCTION LIMITS	-----	HEDGE	-----
RIGHT OF WAY LINE	-----	TREES	-----
TRAVELED WAY	-----	PROFILE ELEVATION	-----
RAILROADS	-----	STREAM or CREEK	-----

GROSS LENGTH OF PROJECT	2,979.87 FT.
EXCEPTIONS	0.00 FT.
ADDITIONS	0.00 FT.
NET LENGTH OF PROJECT	2,979.87 FT.
NET LENGTH OF BRIDGES	0.00 FT.
NET LENGTH OF ROAD	2,979.87 FT.



APPROVED - DATE
JIM ARMOUR, P.E.
CITY ENGINEER
PROJECT NO. 87 N-0235-01

NOTE:
TWO WAY TRAFFIC TO BE CARRIED THROUGH CONSTRUCTION. LOCAL TRAFFIC WILL BE PERMITTED TO ADJACENT PROPERTIES.

PREPARED & SUBMITTED BY
MKEC ENGINEERING CONSULTANTS, INC.
WICHITA, KANSAS

RECOM. FOR APPROVAL-DATE	
CHIEF, BUREAU OF LOCAL PROJECTS KANSAS DEPARTMENT OF TRANSPORTATION	
APPROVED - DATE	
STATE TRANSPORTATION ENGINEER KANSAS DEPARTMENT OF TRANSPORTATION	