

P.I. Sta. 31+19.49  
 1. N=672647.1506, E=1651772.2752  
 2. Not Set

P.I. Sta. 34+66.95  
 1. N=1672647.3308, E=1652119.7360  
 2. Not Set

STATE	PROJECT NO.	YEAR	SHEET NO.	SHEETS
KANSAS	87 N-0235-01	2006	5	120

SW 1/4, SEC. 33, T27S, R1E  
 ROCK ISLAND 3RD ADDITION

Sta. 31+19.49, Cut and cap exist. 18" sanitary sewer, Lt. Abandon exist. sanitary sewer line (E) and manholes to end of project. Work is Subsidiary to "Manhole Abandon (Non-participating)".

Sta. 31+19.49  
 N=1672647.1506  
 E=1651772.2752

Sta. 32+76.39 Const.  
 Curb Inlet (Type 1), 59.43' Lt.  
 L=6'-4", W=4'-4"  
 Inlet Top = 96.91  
 Install 18" x 22.2'  
 Storm Sewer (RCP)(S)  
 See Sh. No. 30, 38 & 39

Sta. 32+93.75 Const.  
 8" Reinf. Conc. Valley Gutter, 22.92' Lt.  
 See Sh. No. 28

Sta. 32+92.74 Saw cut  
 Match exist. pvmt. 64.41' Lt.  
 Install 9.0 L.F. Curb and Gutter  
 and conc. pvmt. as shown

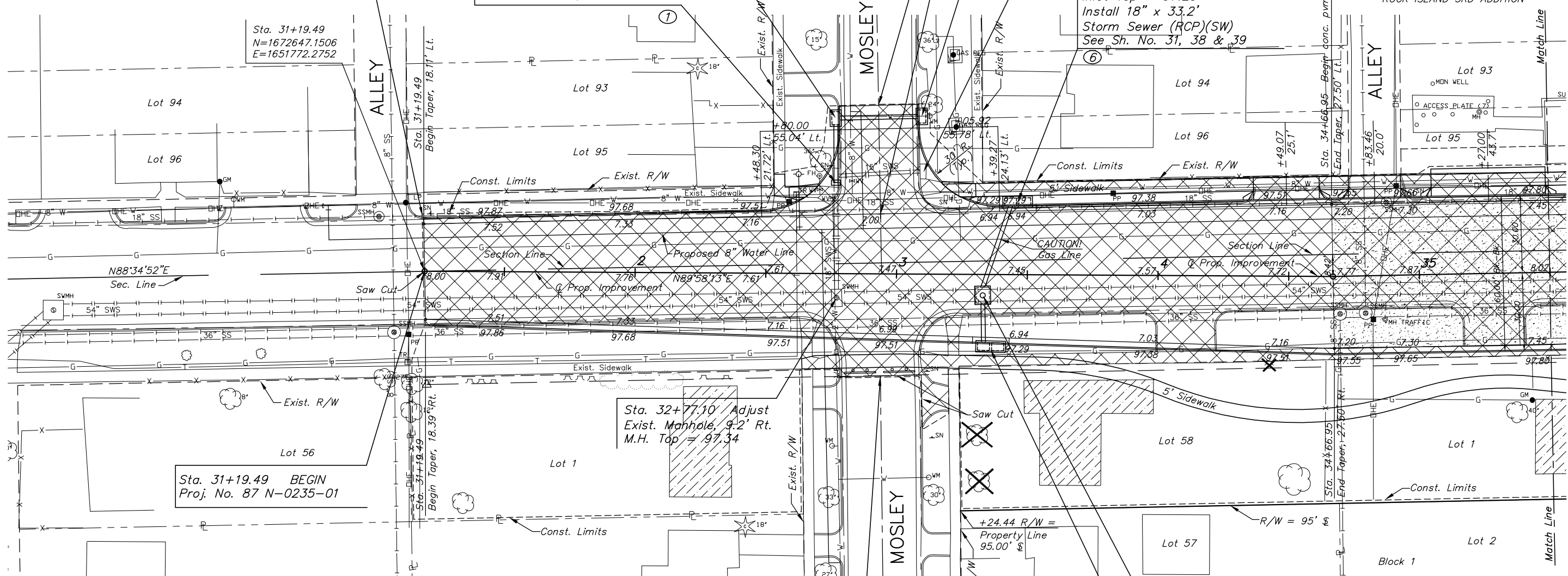
Sta. 33+09.30 Const.  
 Curb Inlet (Type 1), 60.27' Lt.  
 L=6'-4", W=4'-4"  
 Inlet Top = 96.91  
 Install 18" x 30.0'  
 Storm Sewer (RCP)(W)  
 See Sh. No. 30, 38 & 39

Sta. 33+09.91 Remove  
 Exist. Curb Inlet, 39.07' Lt.  
 Plug exist. 15" RCP (W)

Sta. 33+46.17 Const.  
 Curb Inlet (Type 1), 27.81' Lt.  
 L=11'-4", W=4'-4"  
 Inlet Top = 97.29  
 Install 18" x 33.2'  
 Storm Sewer (RCP)(SW)  
 See Sh. No. 31, 38 & 39

SW 1/4, SEC. 33, T27S, R1E  
 ROCK ISLAND 3RD ADDITION

Scale: 1"=20'



Sta. 31+19.49 BEGIN  
 Proj. No. 87 N-0235-01

Sta. 32+77.10 Adjust  
 Exist. Manhole, 9-2' Rt.  
 M.H. Top = 97.34

Sta. 32+93.03, 38.99' Rt.  
 Saw Cut and remove exist. pvmt.  
 Install Type I Barricades  
 with End of Road markers. See  
 Sh. No. 82, 83

Sta. 33+36.11 Const.  
 Curb Inlet (Type 1), 27.54' Rt.  
 L=11'-4", W=4'-4"  
 Inlet Top = 97.29  
 Install 18" x 15.1'  
 Storm Sewer (RCP)(N)  
 See Sh. No. 31, 38 & 39

Sta. 33+33.02 Const.  
 Reinf. Conc. Manhole, 7.99' Rt.  
 M.H. Top = 97.27  
 L=6'-0", W=7'-0"  
 Connect exist. 54" RCP (E-W)  
 See Sh. No. 35, 38 & 39

UTILITIES

Contractor will be required to provide a minimum advance notice of seventy-two (72) hours to utility companies prior to starting any excavation as follows:

- Kansas One—Call 1-800-344-7233  
 Or local (Wichita) 687-2470
- The contractor must notify the following in case of emergency:
- Cox communications (cable) 262-0661
  - Westar Energy (electric) 261-6512
  - Kansas Gas Service (gas) 832-3101
  - SBC (telephone) 800-870-8390
  - City of Wichita water & sewer 262-6000

UTILITY ADJUSTMENTS			
DESCRIPTION	STATION/OFFSET	EXIST. TOP	PROP. TOP
Sanitary Sewer Manhole	34+69.38, 14.35' Rt.	98.09	97.48
Sanitary Sewer Manhole	34+79.19, 14.16' Rt.	98.19	97.52
Sanitary Sewer Manhole	34+87.91, 27.97' Lt.	Abandon	

LEGEND

- House demolition backfill stabilization. See note, Sheet 2.
- Pavement, driveway, parking lot and sidewalk removal

J:\Civil\04222\dwg\pave\04222e01.dwg 07/06/2006 02:17:23 PM CST

KANSAS DEPARTMENT OF TRANSPORTATION

PAWNEE IMPROVEMENTS  
 STA. 30+00 TO STA. 35+50

PROJECT NO. 87 N-0235-01 SEDGWICK CO.

**M K E C ENGINEERING CONSULTANTS, INC.**  
 WICHITA, KANSAS

DESIGNED BY: JRA	CHECKED BY: JRA
DRAWN BY: WNJ	DATE: JULY 2004 SHEET 5 OF 120