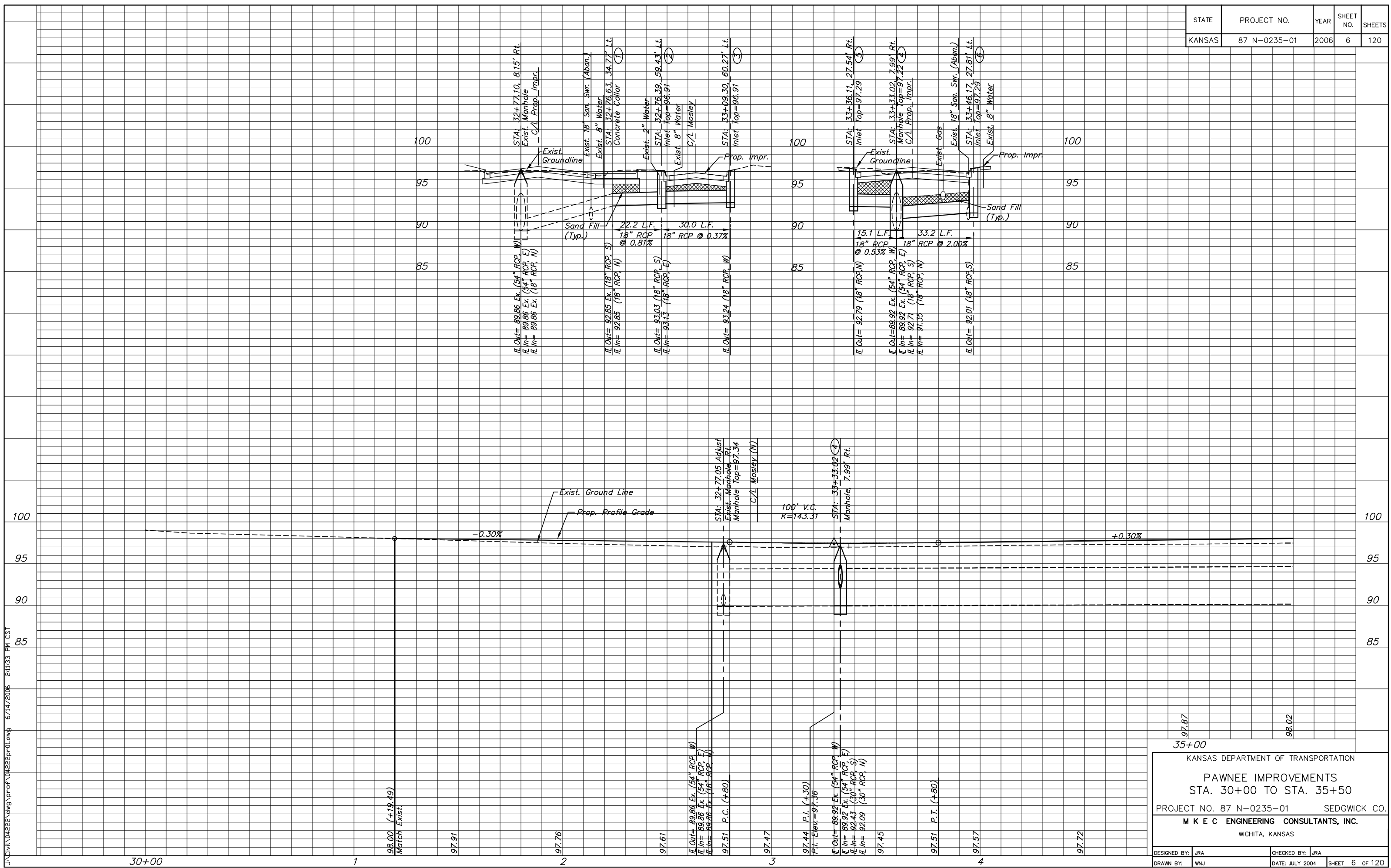


STATE	PROJECT NO.	YEAR	SHEET NO.	SHEETS
KANSAS	87 N-0235-01	2006	6	120

J:\Civil\04222\dwg\prof\04222pr01.dwg 6/14/2006 2:11:33 PM CST



KANSAS DEPARTMENT OF TRANSPORTATION

**PAWNEE IMPROVEMENTS**  
STA. 30+00 TO STA. 35+50

PROJECT NO. 87 N-0235-01 SEDGWICK CO.

**M K E C ENGINEERING CONSULTANTS, INC.**  
WICHITA, KANSAS

DESIGNED BY: JRA	CHECKED BY: JRA
DRAWN BY: WNJ	DATE: JULY 2004

SHEET 6 OF 120

30+00

1

2

3

4

100  
95  
90  
85

100  
95  
90  
85

98.00 (+19.49)  
Match Exist.

97.91

97.76

97.61

97.47

97.44 P.I. (+30)  
P.I. Elev. = 97.36

97.45

97.51 P.T. (+80)

97.57

97.72

97.87  
35+00

98.02

STA: 32+77.10, 81.5' Rt.  
Exist. Manhole  
C/L Prop. Impr.

Exist. Groundline

Exist. 18" San. Swr. (Aban.)  
Exist. 8" Water

STA: 32+76.63, 34.77' Lt.  
Concrete Collar (1)

Exist. 2" Water  
STA: 32+76.39, 59.43' Lt.  
Inlet Top = 96.91 (2)

Exist. 8" Water  
C/L Mosley

STA: 33+09.30, 60.27' Lt.  
Inlet Top = 96.91 (3)

Sand Fill (Typ.)

22.2 L.F.  
18" RCP @ 0.81%

30.0 L.F.  
18" RCP @ 0.37%

H. Out = 89.86 Ex. (54" RCP, W)  
H. In = 89.86 Ex. (54" RCP, E)  
H. In = 89.86 Ex. (18" RCP, N)

H. Out = 92.85 Ex. (18" RCP, S)  
H. In = 92.85 (18" RCP, N)

H. Out = 93.03 (18" RCP, S)  
H. In = 93.13 (18" RCP, E)

H. Out = 93.24 (18" RCP, W)

STA: 33+36.11, 27.54' Rt.  
Inlet Top = 97.29 (5)

Exist. Groundline

Exist. Gas

STA: 33+33.02, 7.99' Rt.  
Manhole Top = 97.22 (4)  
C/L Prop. Impr.

Exist. 18" San. Swr. (Aban.)  
STA: 33+46.17, 27.81' Lt.  
Inlet Top = 97.29 (6)

Exist. 8" Water

Sand Fill (Typ.)

15.1 L.F.  
18" RCP @ 0.53%

33.2 L.F.  
18" RCP @ 2.00%

H. Out = 89.92 Ex. (54" RCP, W)  
H. In = 89.92 Ex. (54" RCP, E)  
H. In = 92.71 (18" RCP, S)  
H. In = 91.33 (18" RCP, N)

H. Out = 92.79 (18" RCP, N)

H. Out = 92.01 (18" RCP, S)

Exist. Ground Line

Prop. Profile Grade

-0.30%

STA: 32+77.95 Adjust  
Exist. Manhole, Rt.  
Manhole Top = 97.34  
C/L Mosley (N)

100' V.C.  
K=143.31

STA: 33+33.02 (4)  
Manhole, 7.99' Rt.

+0.30%