

P.I. Sta. 36+38.37
1. N=1672651.7540, E=1652291.0965

P.I. Sta. 36+88.37
1. N=1672652.6252, E=1652341.0890

P.C. Sta. 39+14.20
1. N=1672657.1942, E=1652566.8702
P.T. Sta. 40+53.08
1. N=1672672.0132, E=1652704.7872
P.C. Sta. 41+02.00
1. N=1672681.4349, E=1652752.7821

Sta. 40+27.93 Const.
8" Reinf. Conc. Valley Gutter, 28.00' Lt.
See Sh. No. 28

Sta. 40+35.74 Saw Cut
Match exist. pvmt., 77.25' Lt.
Install 9.00 L.F. Curb and Gutter
and 8" conc. pvmt. as shown.

STATE	PROJECT NO.	YEAR	SHEET NO.	SHEETS
KANSAS	87 N-0235-01	2006	7	120

Sta. 36+41.00 Const.
Double Driveway Grated Inlet,
86.54' Lt.
L=9'-3", W=3'-5"
Inlet Top = 97.83
Install 18" x 74.8'
Storm Sewer (RCP)(S)
Remove exist. inlet
See Sh. No. 32, 38 & 39

Sta. 36+78.55 Const.
Curb Inlet (Type 1), 83.38' Lt.
L=6'-4", W=4'-4"
Inlet Top = 97.73
Install 15" x 37.0'
Storm Sewer (RCP)(W)
See Sh. No. 30, 38 & 39

Sta. 40+16.39 Const.
Curb Inlet (Type 1), 75.24' Lt.
L=6'-4", W=4'-4"
Inlet Top = 97.46
Install 18" x 31.6'
Storm Sewer (RCP)(S)
See Sh. No. 30, 38 & 39

Construct 12.00 L.F. Curb
and Gutter as shown.
Sta. 40+52.96 Const.
Curb Inlet (Type 1), 70.05' Lt.
L=6'-4", W=4'-4"
Inlet Top = 97.46
Install 18" x 30.2'
Storm Sewer (RCP)(W)
See Sh. No. 30, 38 & 39

Sta. 40+47.4 Remove
Exist. Curb Inlet 42.1' Lt.
Plug exist. 15" RCP (W)

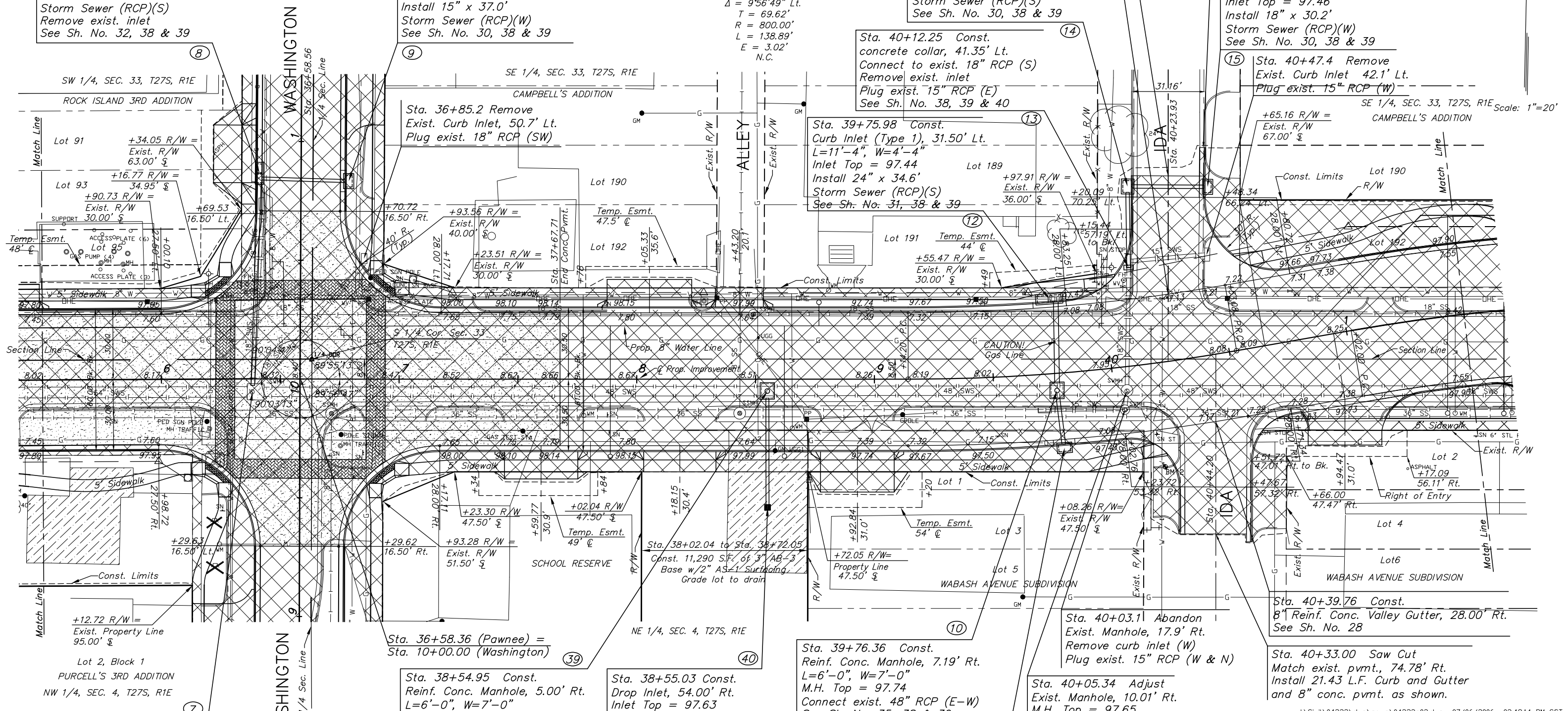
Sta. 40+12.25 Const.
concrete collar, 41.35' Lt.
Connect to exist. 18" RCP (S)
Remove exist. inlet
Plug exist. 15" RCP (E)
See Sh. No. 38, 39 & 40

Sta. 39+75.98 Const.
Curb Inlet (Type 1), 31.50' Lt.
L=11'-4", W=4'-4"
Inlet Top = 97.44
Install 24" x 34.6'
Storm Sewer (RCP)(S)
See Sh. No. 31, 38 & 39

SE 1/4, SEC. 33, T27S, R1E
CAMPBELL'S ADDITION

Sta. 36+85.2 Remove
Exist. Curb Inlet, 50.7' Lt.
Plug exist. 18" RCP (SW)

CURVE DATA #1
P.I. Sta. 39+83.82 (Bk.)=
P.I. Sta. 39+83.47 (Ahd.)
 $\Delta = 9^{\circ}56'49"$ Lt.
T = 69.62'
R = 800.00'
L = 138.89'
E = 3.02'
N.C.



Sta. 36+38.14 Adjust
Exist. Manhole, 5.5' Rt.
M.H. Top = 98.24
Connect new 18" RCP (N)
Remove exist. 18"x75' RCP
and curb inlet (N)
Plug exist. 18" RCP (NE)
See Sh. No. 38 & 39

- S 1/4 Cor. Sec. 33, T27S, R1E
- Found rebar
 - 8.43' Lt., Sta. 36+63.28
 - N 1672660.6170, E 1652315.8586

BM #1 Brass rod in concrete post, 26' N of \odot Pawnee and 32.5' E of \odot Washington El. = 97.62

Sta. 38+54.95 Const.
Reinf. Conc. Manhole, 5.00' Rt.
L=6'-0", W=7'-0"
M.H. Top = 98.36
Connect exist. 48" RCP (E-W)
See Sh. No. 35, 38 & 39

Sta. 38+55.03 Const.
Drop Inlet, 54.00' Rt.
Inlet Top = 97.63
Install 15" x 45.00'
Storm Sewer (RCP)(N)
See Sh. No. 33, 38 & 39

Sta. 39+76.36 Const.
Reinf. Conc. Manhole, 7.19' Rt.
L=6'-0", W=7'-0"
M.H. Top = 97.74
Connect exist. 48" RCP (E-W)
See Sh. No. 35, 38 & 39

Sta. 40+03.11 Abandon
Exist. Manhole, 17.9' Rt.
Remove curb inlet (W)
Plug exist. 15" RCP (W & N)

Sta. 40+05.34 Adjust
Exist. Manhole, 10.01' Rt.
M.H. Top = 97.65
Plug exist. 15" RCP (S)

Sta. 40+39.76 Const.
8" Reinf. Conc. Valley Gutter, 28.00' Rt.
See Sh. No. 28

Sta. 40+33.00 Saw Cut
Match exist. pvmt., 74.78' Rt.
Install 21.43 L.F. Curb and Gutter
and 8" conc. pvmt. as shown.

UTILITY ADJUSTMENTS			
DESCRIPTION	STATION/OFFSET	EXIST. TOP	PROP. TOP
Sanitary Sewer Manhole	36+71.64, 14.55' Rt.	97.54	98.25
Sanitary Sewer Manhole	38+43.32, 14.34' Rt.	98.69	98.10
Sanitary Sewer Manhole	38+49.02, 27.34' Lt.	Abandon	

Sta. 39+77.59 Const.
Curb Inlet (Type 1), 31.50' Rt.
L=6'-4", W=4'-4"
Inlet Top = 97.44
Install 18" x 20.0'
Storm Sewer (RCP)(N)
See Sh. No. 30, 38 & 39

LEGEND

- House demolition backfill stabilization. See note, Sheet 2.
- Pavement, driveway, parking lot and sidewalk removal

BM #2 Square cut in top of curb SW return in drive
 \odot Sta. 40+17.04, 43.85' Rt. El. = 97.64

J:\Civil\042222.dwg\pawnee\042222e02.dwg 07/06/2006 02:48:14 PM CST
KANSAS DEPARTMENT OF TRANSPORTATION

PAWNEE IMPROVEMENTS
STA. 35+50 TO STA. 41+50
PROJECT NO. 87 N-0235-01 SEDGWICK CO.
M K E C ENGINEERING CONSULTANTS, INC.
WICHITA, KANSAS

DESIGNED BY: JRA	CHECKED BY: JRA
DRAWN BY: WNJ	DATE: JULY 2004 SHEET 7 OF 120