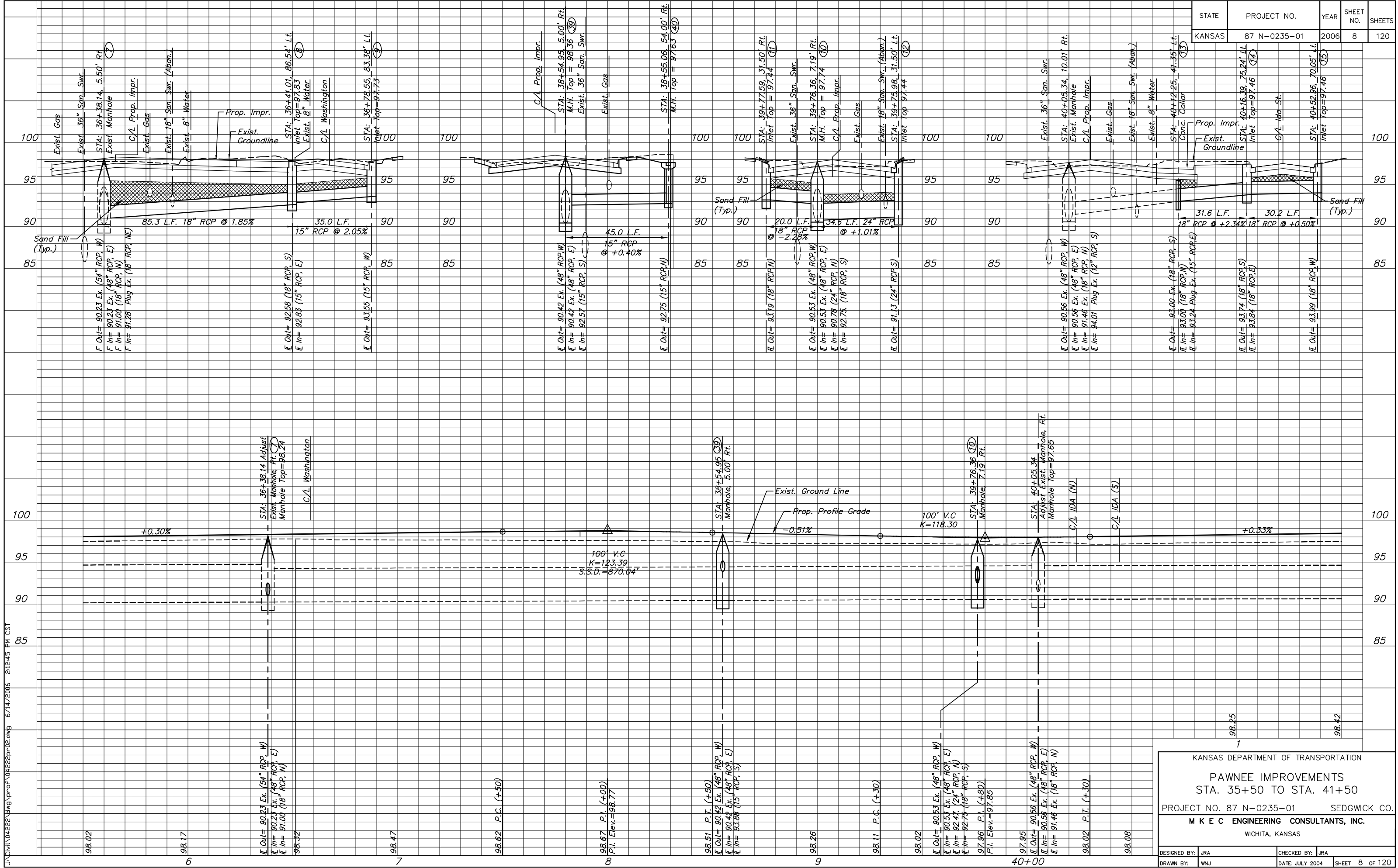


J:\Civil\04222\dwg\prof\04222p02.dwg 6/14/2006 2:12:45 PM CST

STATE	PROJECT NO.	YEAR	SHEET NO.	SHEETS
KANSAS	87 N-0235-01	2006	8	120



KANSAS DEPARTMENT OF TRANSPORTATION

**PAWNEE IMPROVEMENTS**  
STA. 35+50 TO STA. 41+50

PROJECT NO. 87 N-0235-01 SEDGWICK CO.

**M K E C ENGINEERING CONSULTANTS, INC.**  
WICHITA, KANSAS

DESIGNED BY: JRA	CHECKED BY: JRA
DRAWN BY: WJW	DATE: JULY 2004

SHEET 8 OF 120

98.02  
98.17  
98.32  
98.47  
98.62 P.C. (+50)  
98.67 P.I. (+00)  
P.I. Elev.=98.77  
98.51 P.T. (+50)  
98.26  
98.11 P.C. (+30)  
98.02  
97.95  
98.02 P.T. (+30)  
98.08