

P.T. Sta. 42+40.88  
1. N=1672696.2540, E=1652890.7005

Sta. 43+86.08 Saw Cut  
Match exist. pvmt., 69.49' Lt.  
Install 9.0 L.F. Curb and Gutter  
and 8" conc. pvmt. as shown.

Sta. 43+86.08 Const.  
8" Reinf. Conc. Valley Gutter, 28.00' Lt.  
See Sh. No. 28

Sta. 47+12.13 Const.  
8" Reinf. Conc. Valley Gutter, 28.00' Lt.  
See Sh. No. 28

STATE	PROJECT NO.	YEAR	SHEET NO.	SHEETS
KANSAS	87 N-0235-01	2006	9	120

Sta. 43+69.64 Const.  
Curb Inlet (Type 1), 64.99' Lt.  
L=6'-4", W=4'-4"  
Inlet Top = 98.72  
Install 18" x 53.2'  
Storm Sewer (RCP)(S)  
See Sh. No. 30, 38 & 39

Sta. 44+02.52 Const.  
Curb Inlet (Type 1), 64.99' Lt.  
L=6'-4", W=4'-4"  
Inlet Top = 98.60  
Install 18" x 30.0'  
Storm Sewer (RCP)(W)  
See Sh. No. 30, 38 & 39

Sta. 46+95.65 Const.  
Curb Inlet (Type 1), 64.99' Lt.  
L=6'-4", W=4'-4"  
Inlet Top = 98.50  
Install 18" x 46.6'  
Storm Sewer (RCP)(SW)  
See Sh. No. 30, 38 & 39

Sta. 47+12.13 Saw Cut  
Match exist. pvmt., 69.49' Lt.  
Install 9.0 L.F. Curb and Gutter  
and 8" conc. pvmt. as shown.

Sta. 47+28.60 Const.  
Curb Inlet (Type 1), 67.49' Lt.  
L=11'-4", W=4'-4"  
Inlet Top = 98.55  
Install 18" x 30.0'  
Storm Sewer (RCP)(W)  
See Sh. No. 31, 38 & 39

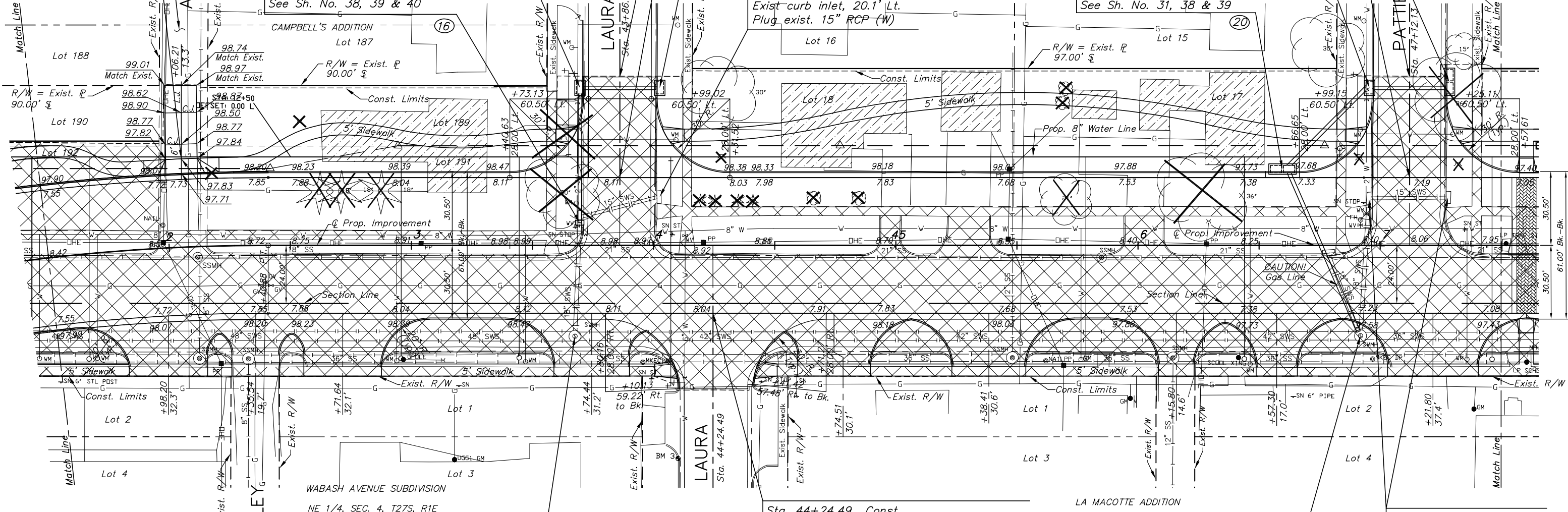
Alley to be paved from the  
North line of Lot 182 to the  
North line of Lot 190 by  
separate project.

Sta. 42+06.21 Const.  
393.86 of 8" Conc. Alley  
on 8" Reinf. Crushed  
Rock Base.

Sta. 43+69.63 Const.  
Concrete Collar, 9.33' Lt.  
Connect exist. 18" RCP (S)  
Remove exist curb inlet  
Plug exist 15" RCP (E)  
See Sh. No. 38, 39 & 40

Sta. 44+02.54 Remove  
Exist curb inlet, 20.1' Lt.  
Plug exist. 15" RCP (W)

Sta. 46+59.65 Const.  
Curb Inlet (Type 1), 31.50' Lt.  
L=11'-4", W=4'-4"  
Inlet Top = 97.69  
Install 18" x 72.0'  
Storm Sewer (RCP)(SE)  
into exist. manhole  
See Sh. No. 31, 38 & 39



CURVE DATA #2  
P.I. Sta. 41+71.62 (Bk.)=  
P.I. Sta. 41+71.26 (Ahd.)  
Δ = 9°56'49" Rt.  
T = 69.62'  
R = 800.00'  
L = 138.89'  
E = 3.02'  
N.C.

Sta. 43+67.5 Adjust  
Exist. Manhole, 37.5' Rt.  
M.H. Top = 98.24

Sta. 44+24.49 Const.  
8" Reinf. Conc. Valley Gutter, 28.00' Rt.  
Saw cut and match exist. pvmt., 59.22' Rt.  
See Sh. No. 28

Sta. 46+91.88 Adjust  
Exist. Manhole, 37.35' Rt.  
Plug exist. 18" RCP (N)  
Remove exist. 15" x 36" RCP  
and Curb Inlet (NW)  
M.H. Top = 97.76  
See Sh. No. 38 & 39

Sta. 47+11.93 Remove  
Exist. curb inlets, Lt.  
Plug pipe ends

UTILITY ADJUSTMENTS			
DESCRIPTION	STATION/OFFSET	EXIST. TOP	PROP. TOP
Sanitary Sewer Manhole	42+10.78, 46.14' Rt.	98.00	98.30
Sanitary Sewer Manhole	42+11.62, 4.34' Rt.	Abandon	
Sanitary Sewer Manhole	42+32.26, 46.79' Rt.	97.94	98.00
Sanitary Sewer Manhole	45+48.15, 46.41' Rt.	97.95	98.10
Sanitary Sewer Manhole	45+84.97, 5.05' Rt.	Abandon	
Sanitary Sewer Manhole	46+14.45, 46.49' Rt.	97.71	97.82

LEGEND  
 House demolition backfill stabilization. See note, Sheet 2.  
 Pavement, driveway, parking lot and sidewalk removal

J:\Civil\04222\dwg\pave\04222e03.dwg 07/06/2006 02:49:52 PM CST  
 KANSAS DEPARTMENT OF TRANSPORTATION  
 PAWNEE IMPROVEMENTS  
 STA. 41+50 TO STA. 47+50  
 PROJECT NO. 87 N-0235-01 SEDGWICK CO.  
 M K E C ENGINEERING CONSULTANTS, INC.  
 WICHITA, KANSAS  
 DESIGNED BY: JRA CHECKED BY: JRA  
 DRAWN BY: WNJ DATE: JULY 2004 SHEET 9 OF 120

BM #3 Square cut in drive return south side  
Q Sta. 44+10.13, 88.01' Rt. El. = 98.14